

A mall where you can enjoy shopping and dining all day long

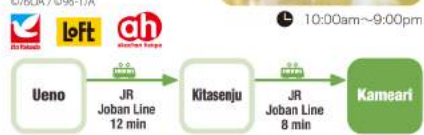
Ario



Near Tokyo/Ueno
A 6-minute walk from Kameari Station
Ario Kameari



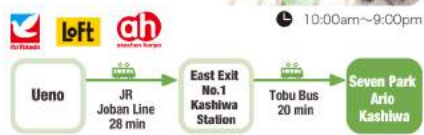
At 'Kochikame Game Park', visitors can enjoy the world of the popular Anime 'Kochikame'!



Near Tokyo/Ueno
6 stops from Ueno Station
Seven Park Ario Kashiwa



Visitors can take pictures with huge objects!



Near Tokyo/Shibuya and Yokohama
A 4-minute walk from Musashi Kosugi Station
GRAND TREE MUSASHIKOSUGI



A rooftop garden! Enjoy a day out with the family



Hokkaido/Sapporo
10 minutes by bus from Sapporo Station
Ario Sapporo



Next to Sapporo Beer Garden



Okayama
Directly connected to Kurashiki Station
Ario Kurashiki



Near the beautiful district where you can enjoy the old townscape of Japan



Specialty shop for babies, toddlers, and mothers to be
Akachan Honpo

The store has branches in all 5 of the Ario malls!

Meiji Hohoemi: Powdered milk that contains nutrients similar to breast milk.

Thermos Straw Cups

A baby bottle designed, based on the movement of the baby's mouth during breastfeeding.

ItoYokado

See the back for store information of Ito Yokado within Ario



Ario

Reliable

High Quality



Perfect for families!
Enjoy Shopping!!
ItoYokado & Ario
The largest Japanese hypermarket chain



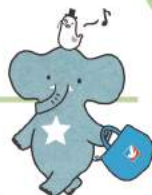
Tax-Free 8% OFF

No handling fees

Credit Cards: VISA, Mastercard, DISCOVER, UnionPay, JCB, Direct Club

Recommended items at Ito Yokado

ハットン探偵団
Ito Yokado's official character



1

Food
IPPUDO Akamaru/Shiromaru
You can enjoy the real taste of the well-known Hakata Tonkotsu Ramen "IPPUDO"!

1

Beauty products
Sekkisui(kose)
Highly popular among women. Skin products which aim to provide moisture and brightening effect.

1

Household items and clothing
Easy-to-use cookware series
Frying pans with removable handle, can be easily taken from the kitchen to the table.

2

Sugar Butter Sand Tree
A popular snack in Japan. The small package make it perfect for a gift.

2

BOTANICAL FORCE (FANCL)
A series of gentle skin care products co-developed with FANCL.

2

"KIREI" Pumps
Highly comfortable heels loved by working women.

3

Raisins Sand
The delicious combination of rich butter cream and raisins.

3

sept beauty(Shiseido)
Co-developed with Shiseido, a series of body care products with relaxing fragrance.

3

Light and easily washable water bottle
The compact design makes it easy to put inside your bag. The mouth piece of the bottle can be removed and washable.

More Popular Items!

Rich assortment

Rock, Takayama, Arita, etc.

We also have traditional Japanese goods for every season!

Limited time offers

Ito Yokado Quality

- Original, strict and high quality standards
- Freshness of the food is checked everyday
- Freshly made sushi and side dishes

Received METI Minister's Awards for Best Contributors to Product Safety.

An enjoyable place for your kids

Kids Space

Food Court

Nursing Room

Service

Free Wi-Fi

CARD → ATM

Wheelchair & Baby Friendly

QR codes for Ito Yokado, Ario, Facebook, Instagram

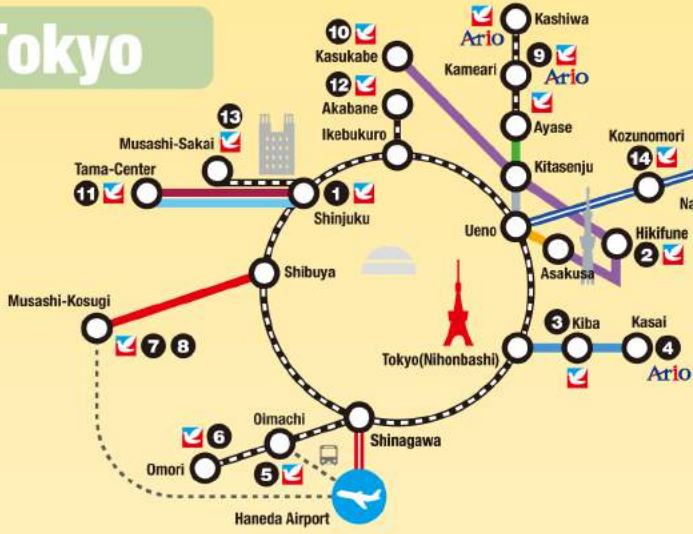
The above are the sample images. The packaging of an items may be subject to change. Please note that some items are only available at the certain branches. ©LS/YWP-TX ©1976, 2013, 2016 SANRIO CO., LTD. APPROVAL No. G572533

Introduction of Ito Yokado recommended branches!

Point1
Near popular tourist spots!

Point2
Convenient as they are in front of the station

Tokyo



Easy to access from the city center!



Ueno	JR Takasaki Line 10 min	Akabane store
	Tokyo Metro Ginza Line 5 min	Hikifune store
	Tokyo Metro Hibiya Line 10 min	Kameari Ekimae Store/Ario Kameari
	Asakusa	Ayase store
Shinjuku	Kitasenju	Oimachi store
	JR Joban Line 6 min	Grand Tree Musashi Kosugi Store/ Musashi Kosugi Ekimae Store
	JR Joban Line 3 min	Musashi Sakai Store
	JR Saikyo Line 19 min	Tama Center Store
	JR Shonan Shinjuku Line 22 min	
	JR Chuo Line 25 min	
	Keio Line 29 min	

Tokyo



Within walking distance from Shinjuku Station!

Right next to Shinjuku-Gyoen
1 Grocery Store Shinjuku Tomihisa
 5 minutes walk from Tokyo Metro Marunouchi Line, Shinjuku-Gyoenmae Station
 ☎ 10:00am-11:00pm

Within a walking distance from Tokyo Skytree!



2 Hikifune Store
 1 stop from Tokyo Skytree Station
 1F-B1F ☎ 10:00am-10:00pm
 2F-4F ☎ 10:00am-9:00pm



Near Ginza Station



3 Kiba Store
 10 minutes by train from Ginza
 ☎ 10:00am-10:00pm

15 minutes by car from Tokyo Disney Resort!



4 Ario Kasai
 8 minutes by bus from Tokyo Metro Tozai Line, Kasai station
 ☎ 10:00am-9:00pm

Near Shinagawa and Haneda



5 Oimachi Store
 1 stop from JR Keihin Tohoku Line, Shinagawa Station
 ☎ 10:00am-10:00pm



6 Omori Store
 2 stops from JR Keihin Tohoku Line, Shinagawa Station
 ☎ 10:00am-10:00pm



Near Shibuya, Shinjuku and Yokohama

7 Grand Tree Musashi Kosugi Store
 Right next to Musashi Kosugi Station which is 13 minutes from Shibuya by Toyoiko Tokyu Line
 1F ☎ 10:00am-10:00pm
 2F-4F ☎ 10:00am-9:00pm

8 Musashi Kosugi Ekimae Store
 3 minutes walk from Musashi-Kosugi Station
 B1F-1F ☎ 9:00am-10:00pm
 2F-5F ☎ 9:00am-9:00pm



Sacred place of Anime

9 Ario Kameari
 It is very convenient as it is located right next to JR Kameari Station
 ☎ 10:00am-10:00pm



Famously used as a setting in a popular Manga

10 Kasukabe Store
 4 minutes walk from Kasukabe Station
 ☎ 9:00am-9:00pm



A few minutes walk from Sanrio Puroland

11 Tama Center Store
 2 minutes walk from Keio Sagami-hara Line or Odakyu Tama Line, Tama-Center Station
 1F ☎ 10:00am-9:00pm
 2F-4F ☎ 10:00am-8:00pm

Other branches in Tokyo

12 Akabane Store
 Near JR Akabane Station
 B1F-1F ☎ 9:00am-10:00pm
 2F-5F ☎ 9:00am-9:00pm



13 Musashi Sakai Store
 2 stops from Kichijoji right next to Ghibli Museum
 ☎ 10:00am-10:00pm



Chiba Branches

14 Narita Store
 1 minute from Keisei Line, Kozunomori Station
 ☎ 10:00am-9:00pm



Funabashi Store
 4 minutes walk from JR Sobu Line, Funabashi Station
 ☎ 10:00am-10:00pm



Tsudanuma Store
 6 minutes walk from JR Sobu Line, Funabashi Station
 B1F-2F ☎ 9:00am-10:00pm
 3F-6F ☎ 10:00am-9:00pm



Hokkaido

Ario Sapporo
 10 minutes by bus from Sapporo Station
 1F ☎ 9:00am-10:00pm
 2F-3F ☎ 9:00am-9:00pm



Susukino Store (LAFILER B1F)
 Near Susukino Station
 B1F ☎ 10:00am-9:00pm



Other branches in Hokkaido

Asahikawa Store
 Near Asahikawa Airport
 ☎ 9:00am-8:00pm



Hakodate Store
 Near Hakodate Airport
 ☎ 9:00am-9:00pm



Obihiro Store
 Near Obihiro Station
 ☎ 9:00am-8:00pm



11 branches in Hokkaido
 Convenient place to shop, right next to Sapporo Beer Garden!



Tohoku

Hirosaki Store
 5 minutes walk from Hirosaki Station
 ☎ 9:00am-8:00pm
 B1F ☎ 9:00am-9:00pm
 6F ☎ 9:00am-6:00pm

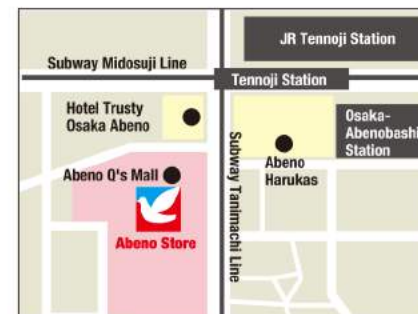


Other branches in Tohoku

Aomori Store
 Near Aomori Airport
 ☎ 10:00am-9:00pm



Hanamaki Store
 8 minutes walk from Hanamaki Station
 1F ☎ 9:00am-9:00pm
 2F ☎ 9:00am-8:00pm



Osaka

Within "Abeno O's Mall" located near Tennoji Station and Osaka-Abenobashi Station
Abeno Store
 7 minutes walk from Tennoji Station
 ☎ 10:00am-10:00pm



There's a food court for your convenience too!



2F Ito Yokado Kids' clothing, Stationery, Toys and Fancy goods (Akachan Honpo)
 1F Ito Yokado Women's clothing, Men's clothing, Kitchen tools, Daily necessities, Cosmetics and Pharmaceuticals
 B1F Ito Yokado food, Food court