

WAKAYAMA CITY TOURISM GUIDE

If you here a trip planned to Japan. you ought to come to Wakayama.

my secret wakayama.





Wakayama Castle

Selected as one of Japan's 100 best castles, for its beautiful chalky white castle tower that stands over the center of the city. The castle tower also offers a spectacular view of the city.

Access

·7 min. bus ride or 20 min. walk from JR Wakayama Sta. (1.5 km)
 ·5 min. bus ride or 10 min. walk from Nankai Wakayamashi Sta. (1 km)



Cherry Blossoms (late March to early April)

The castle boasts some 600 cherry blossom trees that bathe the grounds in pink each spring.



Fall Colors (late November to early December)

See the beautiful fall colors reflected in the garden pond below, or enjoy a spot on the castle grounds surrounded entirely by brightly colored leaves.



Dress-up Experience

Try on old-fashioned outfits for feudal lords, princesses, ninjas, and more.



Tea Experience

Enjoy green tea and Japanese sweets in the scenic Momijidani Teien Garden's teahouse.



Wakayama Marina City

This resort island offers great food, hot spring baths, a theme park, and a hotel, making it a great getaway. The Tuna Cutting Show, held daily at Kuroshio Ichiba Market, is a must-see.

Access

-30 min. bus ride from JR Wakayama Sta. (9 km)
 -40 min. bus ride from Nankai Wakayamashi Sta. (10 km)



Porto Europa

A theme park with a medieval European atmosphere. Visitors can enjoy events like fireworks shows and more.



Kuroshio Ichiba Market

Grab a bite to eat or do some shopping at this lively seafood marketplace. Visitors can even buy fresh seafood at the shops and grill it at a restaurant here.



Sushi-making Experience

Learn how to make authentic nigiri sushi from a professional sushi chef.



Kishu Kuroshio Onsen

Enjoy natural hot spring baths with breathtaking views out to the horizon.



Wakayama Marina City Hotel

Every guest room at this resort hotel has a view of the ocean.

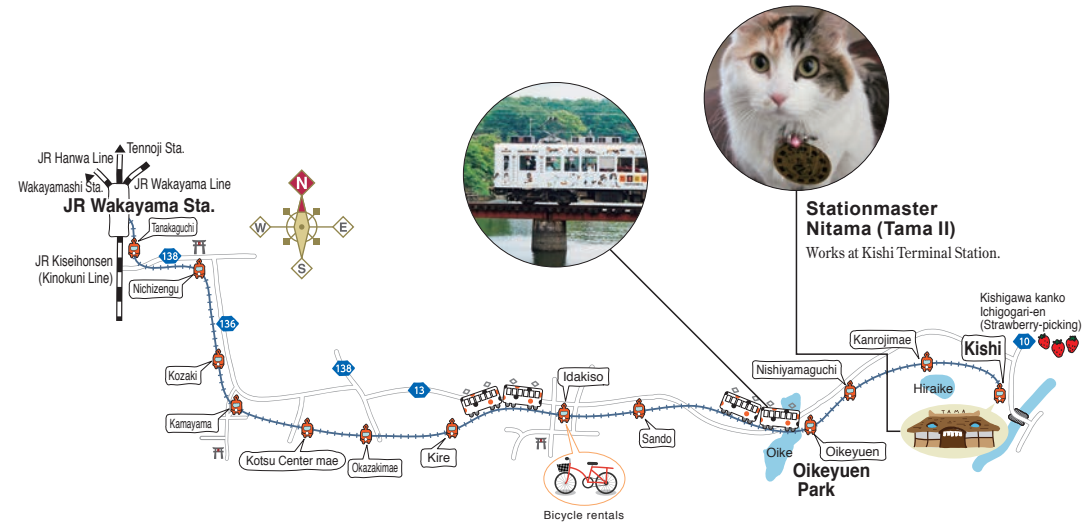


Wakayama Electric Railway, Kishigawa Line

The world-famous cat stationmaster is waiting for you at Kishi Station, the last stop on this train line.

Access ·30 min. train ride from platform 9 of JR Wakayama Sta. to Kishi Sta., the last stop (12 km)

Wakayama Electric Railway, Kishigawa Line



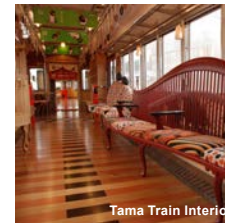
Stationmaster Nitama (Tama II)
Works at Kishi Terminal Station.

A 30-minute train ride each way. Hop on this adorable train and come meet Stationmaster Nitama!

DESIGN BY EIJI MITOOKA + DON DESIGN ASSOCIATES



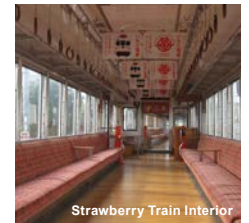
Tama Train



Tama Train Interior



Strawberry Train



Strawberry Train Interior

Tama Train & Strawberry Train

These adorable trains feature lots of cute designs inside and out. You might also catch the Toy Train or the Umeboshi Train!



Tama Café

This charming little rest area features a delightful cat motifs.



Strawberry-picking (at Kishigawa Kanko Ichigogari-en)

All the large, sweet strawberries you can eat! Open from early February through mid May.



Kada & Tomogashima Islands

The Tomogashima Islands are just a 20-minute boat ride from Kada Port. This uninhabited islands are known for its distinctive brick weapon batteries that have fallen into disuse and been reclaimed by nature.

Access · 25 min. train ride from Nankai Wakayamashi Sta. to Kada Sta. (last stop; 10 km)



Kada Port

Kada originally grew and flourished as a fishing town, and is still famous for its incredibly fresh seafood dishes.



Hina Nagashi

This tradition is held every March 3 at Awashima-jinja Shrine.



Kada Townscape

The road from Kada Station is lined with many charming old Japanese-style buildings.



Medetai Train

This train features a tai, or sea bream, motif. Sea bream is a traditional symbol of celebrations in Japan — perhaps a ride will help bring you happiness as well.





Wakaura, Saikazaki, and Kimiidera

For over 1,200 years, this area's scenic beauty has been a beloved source of inspiration for poets. Historic temples and shrines dot the landscape all around the area, and the local culture, like the local scenery, has been preserved from generation to generation.

Access

- 20 min. bus ride from JR Wakayama Sta. (5 km)
- 25 min. bus ride from Nankai Wakayamashi Sta. (6 km)



Futagojima Islands

The spectacular sunsets behind these "twin islands" have captivated people for centuries.



Kimii-dera Temple

This historic temple was originally built in the year 770, and is famous for its 500 cherry blossom trees that bloom each spring.



Kishu Toshogu Shrine

The dazzling colors and fine details make this shrine's carvings a must-see.



Bando Teien Garden

This garden extends to the end of the cape, with beautiful panoramic views all around.



Yosuien Garden

This Japanese garden is known for its ever-changing beauty throughout all four seasons.

Local Favorites Wakayama Ramen / Green Soft / Fresh Seafood



Wakayama Ramen
The soul food of Wakayama! The pork bone broth is perfectly seasoned with soy sauce.



Green Soft
The world's first matcha green tea-flavored soft-serve ice cream.

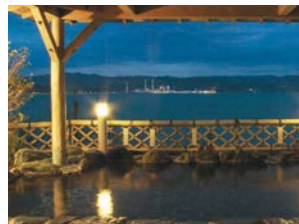


Fresh Seafood
A variety of fresh seafood caught from local parts.

Onsen



“Tenku-no-yu Bath”at the National Park Resort Kyukamura Kishu Kada



“Manyo-no-yu Bath”at Manpa Resort



“Hiina-no-yu Bath”at Osakaya

This town is home to fourteen natural hot spring bath establishments, also offering open-air baths with a view of the ocean and more.

Wakayama City Map



Useful Links

my secret Wakayama
(Wakayama City sightseeing information)
<http://www.mysecretwakayama.com/>



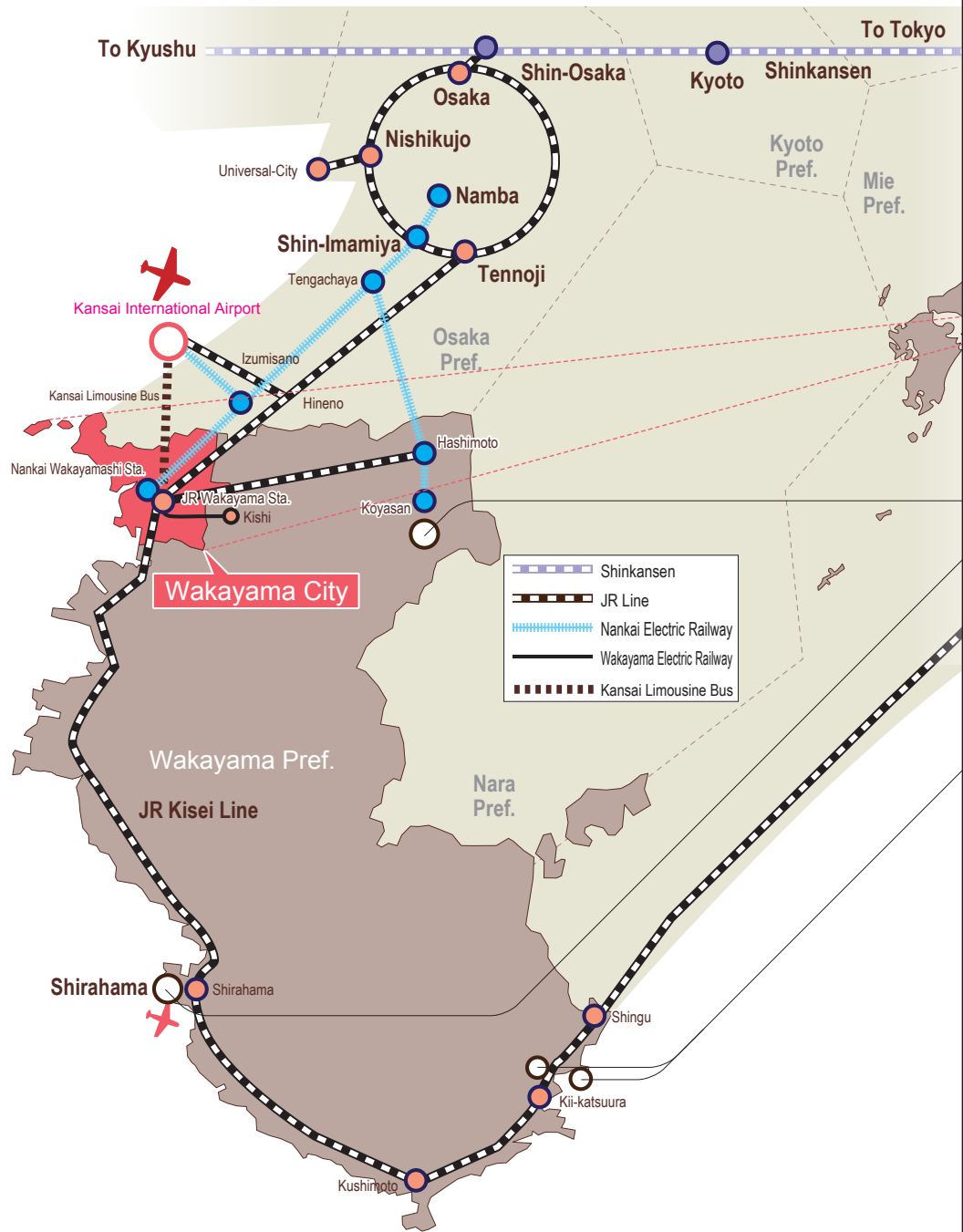
WAKAYAMACITY.NET
(Information about restaurants, shops, and more in Wakayama City)
<http://wakayamacity.net/en/>



Visit Wakayama
(Wakayama Prefecture sightseeing information)
<https://en.visitwakayama.jp/>



To Wakayama City
1 hour from Osaka, 40min. from Kansai International Airport by bus or train.



KOYASAN AREA



World Heritage
Danjo Garan Sacred Temple Complex

SHIRAHAMA AREA



Engetsuto Island



Shirahama Onsen

KUMANO AREA



World Heritage
Nachi Waterfall



Katsuura Onsen

Get unlimited rides in Okayama, Takamatsu, Kinokuni, Amanohashidate, Tottori, Kishi, Shirahama and Kii-Katsuura, in addition to the Kansai area! *'Ekin Kun' can be used. Can also be used in automatic ticket gates*

Kansai WIDE Area Pass

Get unlimited rides on the Sanyo Shinkansen (incl. NOZOMI and MIZUHO, between Shin-Osaka and Okayama), Limited Express and local trains (incl. Rapid and Special Rapid services) in the area with non-reserved seats, Kyoto Tango Railway, Wakayama Electric Railway, and West JR Bus in the area. *Use a manned ticket gate where an automatic ticket gate is unavailable.

*Valid also on Sanyo Shinkansen "NOZOMI" and "MIZUHO". *Not valid on Tokaido Shinkansen (Shin-Osaka⇄Kyoto).

5-day

Purchasing abroad

¥9,000
(Children ¥4,500)

Purchasing in Japan

¥9,500
(Children ¥4,750)

- MCO exchange, ticket sales counters in Japan and online booking exchange counters
- MCO exchange and ticket sales counters in Japan
- Ticket sales counters in Japan
- ★ Stations where Rent-a-cycle 'Ekin Kun' is available (See page 6 for details)



Get unlimited rides in the Kansai Area (Osaka, Kyoto, Kobe, Nara, Himeji, Wakayama, Shiga, Tsuruga, Iga-Ueno)!

'Ekirin Kun' can be used.

Can also be used in automatic ticket gates*

Kansai Area Pass

Get unlimited rides on the Kansai-Airport Express "HARUKA" and local trains (incl. Rapid and Special Rapid services) with non-reserved seats, and West JR Bus in the area.

*Not valid on the Shinkansen or Limited Express trains other than the Kansai-Airport Express "HARUKA". **Not valid on Tokaido Shinkansen (Shin-Osaka⇄Kyoto).

*Use a manned ticket gate where an automatic ticket gate is unavailable.

Purchasing abroad

Purchasing in Japan

Available Area

- MCO exchange, ticket sales counters in Japan and online booking exchange counters
- MCO exchange and ticket sales counters in Japan
- Ticket sales counters in Japan *Also used on Shin-Kyo Station
- * Stations where Haru-no-Kaze "Ekirin Kun" is available (See page 6 for details)



1-day ¥2,200 (Children ¥1,100) ¥2,300 (Children ¥1,150)

2-day ¥4,300 (Children ¥2,150) ¥4,500 (Children ¥2,250)

3-day ¥5,300 (Children ¥2,650) ¥5,500 (Children ¥2,750)

4-day ¥6,300 (Children ¥3,150) ¥6,500 (Children ¥3,250)

KANSAI THRU PASS

This ticket allows you to ride on subways, private railways and buses throughout the Kansai district. In addition to allowing you to tour Osaka, Kobe and Kyoto, it lets you visit Nara, Wakayama and Koyasan. Purchasing the economical KANSAI THRU PASS that comes in two types; 2-day and 3-day, will let you enjoy a more value-for-money holiday.

2-day ticket ¥4,000 (child ¥2,000)

3-day ticket ¥5,200 (child ¥2,600)

In detail http://www.surutto.com/tickets/kansai_thru_english.html

Wakayama Bus One day pass



Ride as much as you want for one day including the Wakayama Bus Naga Route!

* Excludes the highway bus, limousine bus and community bus lines.

Includes coupons for special benefits, available at approx. 30 facilities along the bus routes. (Provided upon purchase)

Adult: ¥1,000
Child: ¥500

Wakayama Electric Railway Kishigawa Line One day ticket



Adult: ¥780
Child: ¥390

Wakayama Bus



Wakayama Electric Railway Kishigawa Line

One day pass

Adult: ¥1,600
Child: ¥800

Wakayama City Tourist Association

3 Ichibancho, Wakayama City 640-8146
Tel.+81-73-433-8118 Fax.+81-73-433-8555
Email info@wakayamashikanko.com
<http://www.wakayamakanko.com/eng/>

