



Welcome to Tochigi, a land of World Heritage and great nature

A Quick Getaway from Tokyo

Tochigi

**Visitors
Guide**

TOCHIGI





Finished exploring Tokyo?

In fact,
the well known
Nikko is right in
Tochigi!

P.5 Nikko

World Heritage Sites and
breathtaking nature



P.9 Utsunomiya

Local cuisine and
underground world



P.3 Map & Access



P.7 Kinugawa

Onsen and theme
parks for family



P.11 Yunishikawa

Onsen town with
fantastic winter views

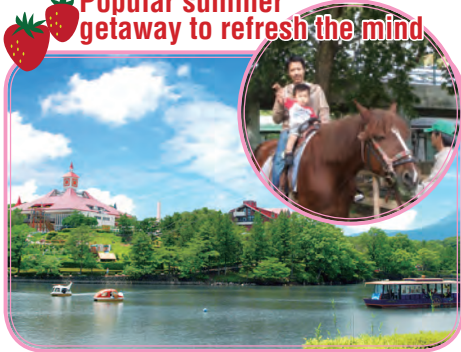


If you are done with Tokyo,
why not make a short trip to attractive **TOCHIGI** prefecture?

.....

P.13 Nasu

**Popular summer
getaway to refresh the mind**



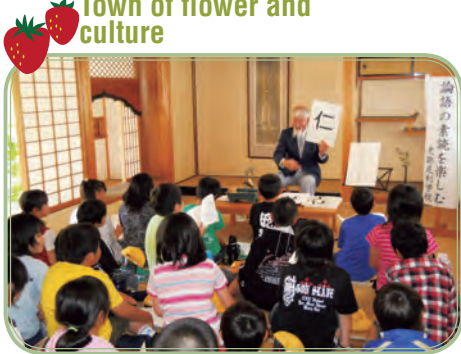
P.15 Mashiko

**Pottery town that blends
modern with tradition**



P.17 Ashikaga

**Town of flower and
culture**



P.18 Tochigi City

**A time slip tour to
explore tradition**



P.19 Flowers & Fruits



P.21 Tochigi Specialty Products





About Tochigi Prefecture

With just a 50-minute ride on the Shinkansen from Tokyo, you can reach Utsunomiya, the capital of Tochigi prefecture. It offers many natural sceneries and World Heritage Sites including the famous Nikko Shrine.

With relaxing hot springs, family-friendly theme parks and local cuisine ranging from strawberries to fried dumplings, Tochigi is definitely your ideal destination near Tokyo.



Tochimarukun:
the mascot of Tochigi

TOCHIGI



Access Information

From Narita Airport

Kanto Bus (Marronnier direct bus)

Airport - Utsunomiya Station: approx. 2 hrs and 50 min.

<http://www.kantobus.co.jp/highway/maronie01.html>

Chiba Bus (Salvia direct bus)

Airport - Ashikaga Station: approx. 2 hrs and 40 min.

<http://www.chibakotsu.co.jp/kousoku/salvia.htm>

From Haneda Airport

Kanto Bus (Marronnier direct bus)

Airport - Utsunomiya Station: approx. 3 hrs.

http://www.kantobus.co.jp/highway/maronie01_haneda.html

From Ibaraki Airport

Airport bus

Airport - Mito Station: approx. 40 mins, and then transfer to JR Mito Line.

From Tokyo

JR Tohoku Shinkansen

A high-speed railway you can't afford to miss.

Tokyo Station - Utsunomiya Station: approx. 50 mins.

Tokyo Station - Nasu-shiobara Station: approx. 1 hr and 10 min.

JR Shonan Shinjuku Line

Direct service connecting Utsunomiya with Yokohama, Shinjuku, and Shibuya.

Shinjuku Station - Utsunomiya Station: approx. 1 hr and 45 min.

Tobu Railway

Head to Tochigi after having a good time at Asakusa.

Asakusa Station - Tobu Nikko Station: approx. 1 hr and 45 min.

Asakusa Station - Kinugawa Onsen Station: approx. 2 hrs.



Best of Tochigi Prefecture

*World Heritage Site

("Shrines and Temples of Nikko")

*World's longest tree-lined

avenue (Cedar Avenue of Nikko)

*Japan's oldest college

(Ashikaga School)

*Japan's top gyoza

consumption (Utsunomiya City)

*Japan's top strawberry production



2-Day Trip



A Fulfilling Trip of World Heritage

This trip leads you not only to famous shrines and temples but also

DAY1

**Asakusa
Station 9:00**



Tobu Limited Express
Kinu 105

**Shimoimaichi
Station** 10:39
10:43

Tobu Nikko line

**Tobu
Nikko
Station** 10:52 Lunch
12:18

11 min. by bus, get
off at Omotesando
and then walk 5 min.

**Nikko
Toshogu
Shrine** 12:40
Stay: 2 hours 14:40

10 mins on foot

**Futarasan
Shrine** 14:50
Stay: 1 hour 15:50

3 mins on foot

**Rinnoji
Temple** 16:00
Stay: 1 hour 17:00

You may take a
bus to Tobu Nikko
Station and then
head to ryokan.

Ryokan
(traditional Japanese inn)

Nikko Toshogu Shrine

Toshogu's splendid architecture is designed by artisans from all over Japan. Many of the animal carvings symbolize world peace.

<http://www.toshogu.jp/english/>



More fun with guidance

Learn more about the shrine with the touch pen audio guide system.
(Language availability: Japanese, English, Chinese. Fees: 500 yen)



Futarasan Shrine

Lined with old sacred trees, Futarasan Shrine is worshipped for good luck and marriage.

<http://www.futarasan.jp/>



Rinnoji Temple

Observe interesting similarities and differences between Rinnoji Temple and Toshogu Shrine.

<http://rinnoji.or.jp/>

Enjoy ryokan stay!

Indulge in cuisine made with local wagyu beef after a relaxing hot spring bath.



Accommodation Information

Nikko Onsen Ryokan Association Address: Tokorono 2854, Nikko
TEL: +81-288-54-3126 <http://www.nikko-spa.org/english/index.html>

Sites and Breathtaking Nature Nikko

to gorgeous natural attractions including lakes and waterfalls.

Kegon Waterfall

One of Japan's top three waterfalls.
Experience the power of gushing water at
the observation platform (charges apply).
<http://www.nikko-kankou.org/spot/5/>



Lake Chuzenji

Great summer retreat. Take a stroll or boat ride to
enjoy the scenes.

<http://www.nikko-kankou.org/spot/12/>



Senjogahara Marshlands

Embark on a 2-hour hike and soak in the views
of the surrounding mountains.

<http://www.nikko-kankou.org/spot/10/>



More to discover!



1000 Samurai Procession

Annual spring and autumn event
commemorating an ancient
ceremony. <http://www.nikko-kankou.org/spot/27/>



Irohazaka Winding Road

Spectacular road with 48 turns
that attract crowds every maple
season. <http://www.nikko-kankou.org/spot/9/>



Fried Yuba Manju

A crispy sweet treat made with
Nikko's famous yuba (tofu skin).
<http://www.sakae-ya.com/>



DAY2

Ryokan



Tobu Nikko Station 10:05

40 min. by bus, get off
at Chuzenji Onsen and
then walk 5 min.

Kegon Waterfall

Stay: 40 min. 11:00
11:50



10 min. on foot

Lake Chuzenji

Stay: 2 hours 12:00 Lunch
14:30

20 min. by
bus, get off at
Sanbonmatsu.

Senjogahara Marshlands

Stay: 1 hour 14:40
15:57

Tobu Bus

Tobu Nikko Station 16:57 17:25



Tobu Nikko Line

Shimoimaichi Station 17:33 17:35



Transfer to Tobu
Limited Express
Kinu 136

Asakusa Station 19:15

Money-saving ticket recommended for the trip

All Nikko Pass http://www.tobu.co.jp/foreign/pass/all_pass.html

See back cover for details.

2-Day Trip



A Trip of Onsen and Theme Park

2 hours from Tokyo is Kinugawa, historically renowned for onsens, t

DAY 1

Asakusa Station 10:00



Tobu Limited
Express Kinu 109

Kinugawa Onsen Station 11:59 Lunch
13:30



5 min. on foot

Kinugawa River Boat Rides 14:00
Stay: 1 hour 14:40

Ryokan

Kinugawa River Boat Rides

Don't miss this thrilling rafting activity during April to November. Professional coaches will guide you down the Kinugawa River with interesting narrations.

<http://linekudari.com/>



Kinugawa Onsen

Stay overnight and enjoy elegant cuisine and a soothing onsen. The excellent Japanese hospitality will leave a memorable impression on your trip.



More to discover!



Tobu World Square

Travel the world in this theme park that reproduces the world's famous attractions. http://www.tobuws.co.jp/default_en.html

Accommodation Information

Kinugawa Onsen Ryokan Association Address: 1404-1 Ohara Kinugawa Onsen, Nikko
TEL: +81-288-77-1039 <http://www.kinugawa-onsen.com/>

s for Family! Kinugawa

Theme parks and beautiful sceneries. Highly recommended for tourists of all ages.

Edo Wonderland (Nikko Edo Mura)

Experience Edo era life or watch historical plays in this theme park that is set in olden days of Japan.

<http://www.edowonderland.net/html/en/index.html>



Live Ninja Theatre

Queue early to catch the live action of Ninjas!



Oiran Parade

Elegant procession of courtesans strolling down the streets.

Cute Souvenirs

Get everything that features Nyanmage, the mascot of Edo Village.



Edo-style Costume Experience

Travel through time by dressing up as an Edo citizen.



Explore with Smartphone APP

Download the multi-language "NYANMAGEYE" app to navigate the place with more information. Free WIFI available in the park.



DAY 2

Ryokan

Kinugawa Onsen Station 10:00

Bus

Edo Wonderland 10:15 Lunch 15:45

Stay: 5.5hours

Bus

Kinugawa Onsen Station 16:00 16:12



Tobu Limited Express Kinu 132

Asakusa Station 18:15

Money-saving ticket recommended for the trip

Kinugawa Theme Park Pass http://www.tobu.co.jp/foreign/pass/theme_pass.html

See back cover for details.

2-Day Trip



Local Cuisine Trip with Tasty Gyozas and...

As a bicycle-friendly city, Utsunomiya is also notable for stones and

DAY 1

Tokyo Station 10:36



JR Tohoku Shinkansen
Yamabiko 47

Utsunomiya Station
11:27 Lunch
12:35

13:05
30 min. by bus, get
off at Shiryokan-
iriguchi and then walk
3 min.

Oya History Museum
13:05
Stay: 1 hour 14:22

Bus

Utsunomiya Station 14:53

20 min. on foot
(5 min. by bus)

Kirasse Main Store
15:30
18:30
Stay: 3 hours Hands-on
gyoza making

20 min. on foot
(5 min. by bus)

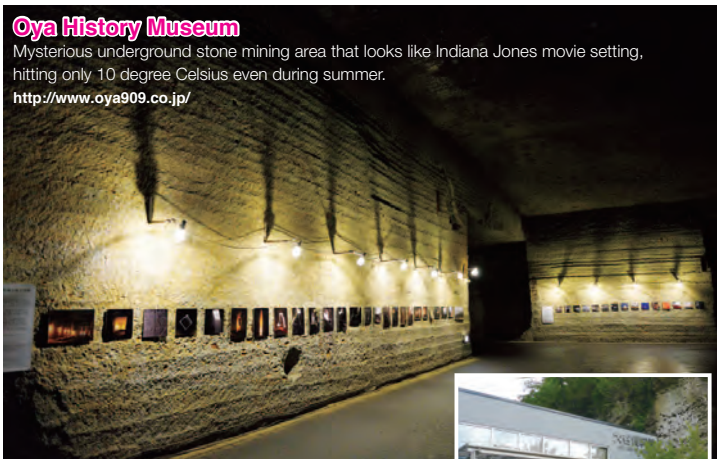
Utsunomiya Station 18:50

Hotel

Oya History Museum

Mysterious underground stone mining area that looks like Indiana Jones movie setting, hitting only 10 degree Celsius even during summer.

<http://www.oya909.co.jp/>



Utsunomiya Gyoza - Kirasse Main Store

In this city with the highest gyoza consumption in Japan, check out different flavors of gyoza here.

<http://www.gyozakai.com/kirasse/>



▼All kinds of original gyoza merchandise.



▼Hands-on gyoza making (reservations required).



Accommodation Information

Utsunomiya Ryokan Association Address: 7F, 12-11 Honcho, Utsunomiya TEL: +81-28-622-1225 <http://www2.ucatv.ne.jp/~hrkumiai.sun/>

Utsunomiya Convention & Visitors Bureau Address: 2F, 3-1-4 Chuo, Utsunomiya TEL: +81-28-632-2445 <http://www.utsunomiya-cvb.org/>

and an Underground World Utsunomiya

gyozas. Accessible within an hour from Tokyo on Shinkansen.

“Miya” Cycle Station

Tour Utsunomiya by renting bicycles from this station that also offers tourist information.

<http://miya-cyclestation.jp/>



Romantic Village

Get close to nature and experience the farming lifestyle at this agriculture theme park.

<http://www.romanticmura.com/>



More to Discover!



Must-watch for cycling fans

Don't miss the Japan Cup cycling race and Utsunomiya's Blitzen cycling team!

<http://www.japancup.gr.jp/>
<http://www.blitzen.co.jp/>



Mega Don Quijote LAPARK Utsunomiya Outlet

Discover the original Japan goods that are popular among foreign tourists. http://mega.donki.com/search/shop_detail.php?st_store_id=235



Kanuma Satsuki Festival

Famous for azalea flowers, Kanuma City runs a flower festival every May. http://www.kanuma-kanko.jp/news_details.shtml?2214:1




DAY 2

Hotel

“Miya” Cycle Station
Cycling around town

10:00
11:30

 Bus 2min. on foot

Utsunomiya Station 12:30 Lunch

Bus

Romantic Village

Stay: 2.5 hours 13:05 15:45

Bus

Utsunomiya Station 16:22 16:58



JR Tohoku
Shinkansen
Yamabiko 146

Tokyo Station 17:48

Money-saving ticket recommended for the trip

JR Kanto Area Pass <http://www.jreast.co.jp/e/kantoareapass/index.html> See back cover for details.

Oya 1-day bus ticket <http://www.city.utsunomiya.tochigi.jp/kanko/kankou/030466.html>

2-Day Trip



A Trip to an Onsen Town with Fantastical

Not far from Kinugawa onsen quietly lies Yunishikawa onsen, a place

DAY 1

Asakusa Station 10:00



Tobu Limited
Express Kinu 109

Kinugawa Onsen Station

11:59 Lunch
13:11



Tobu Kinugawa Line

Yagan Railway Yunishigawa Onsen Station

13:35
13:50

Bus

Yunishigawa Onsen 14:20



15 min. on foot

Yunishigawa Kamakura Festival

Stay: 2 hours
14:35
16:35

Ryokan (Yunishigawa Onsen) 17:00

Yunishigawa Kamakura Festival

Held from late January to mid-March, the festival features thousands of snow houses (kamakura) built and illuminated along the river.

<http://www.nikko-kankou.org/event/64/>



Yunishigawa Onsen

In onsen hotels, guests have the pleasure of enjoying hot spring baths and local delicacies served around a fireplace.

<http://www.nikko-kankou.org/spot/34/>



Accommodation Information

Yunishigawa Onsen Ryokan Association Address: 1155-1 Yunishigawa, Nikko

TEL: +81-288-22-1525 <http://www.nikko-kankou.org/>

Winter Views Yunishigawa

Known for great food and outdoor baths.

A Tour through Breweries

Clean underground water is the key to brewing the best sake.



Katayama Brewery

This brewery specializes in premium sake with no water added after fermentation. Visitors can sign up for a brewery tour (reservations required). <http://www.kashiwazakari.com/>



Watanabe-Sahei Brewery

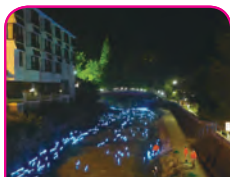
This hundred-year-old shop sells high quality sake and offers brewery tours and sake lessons (reservations required). <http://www.watanabesahei.co.jp/>

More to discover!



Takenoyoi Festival

This onsen town is illuminated by gentle lights of bamboo lanterns in July. <http://www.nikko-kankou.org/event/374/>



Kawaakari Festival

Two thousand LED lights flow down the river, resembling shooting stars. <http://www.nikko-kankou.org/event/468/>



Village of the Heike Clan

An open air museum of traditional houses, illustrating lives of villagers in the past. <http://www.nikko-kankou.org/spot/54/>

Money-saving ticket recommended for the trip

2 Day Nikko Pass http://www.tobu.co.jp/foreign/pass/2day_nikko_pass.html

See back cover for details.



DAY 2

Ryokan (Yunishigawa Onsen) 10:00

Bus

Kinugawa Onsen Station 11:00 11:43



Tobu Kinugawa Line

Shimo-imaichi Station 12:04 Lunch 13:10



9 mins. on foot

Katayama Brewery 13:30 Stay: 1 hour 14:30



9 mins. on foot

Watanabe-Sahei Brewery 14:40 Stay: 1 hour 15:40



9 mins. on foot

Shimoimaichi Station 16:05



Tobu Limited Express Kinu 130

Asakusa Station 17:45

2-Day Trip



A Popular Summer Getaway to Refresh

Take a getaway from Tokyo and enjoy nature's bounties all year round.

DAY 1

Tokyo Station 9:16



JR Tohoku
Shinkansen
Nasuno 255

Nasu Shiobara Station
10:26
10:45

Shuttle bus
(reservation required)

Nasu Rindo Lake View
11:25 Lunch
Stay: 3.5 hours 14:40

Shuttle bus

Nasu Shiobara Station 15:20

Hotel



Nasu Rindo Lake View

Among the many lovely park attractions are animal pastures, freshly made ice cream, and an aerial rope-slide.

<http://www.rindo.co.jp/>



Stay in Nasu

This onsen area offers great views of the Nasu mountain range, which is still spewing volcanic steam. You may also take the ropeway for a hiking trip.



More to discover!



Yahata Peony

Peony blooming season begins in May. Don't miss out on a walk in the Peony Garden.
<http://www.tochinavi.net/spot/home/?id=10465>

Accommodation Information

Nasu Onsen Ryokan Association Address: 182 Yumoto, Nasu-machi, Nasu-gun
TEL: +81-287-76-2755 <http://www.nasuonsen.com/>

h the Mind Nasu

and at Nasu Plateau. If you love to be embraced by nature, this is the place to be!

Mt. JEANS Nasu Gondola

Hop on the gondola for a birdseye view of Nasu all season round.

<http://www.mtjeans.com/green/en/>



Nasu Garden Outlet

This outlet houses 150 shops and restaurants. There's always something for everyone here.

<http://www.nasu-gardenoutlet.com/>



More to discover!

Nasu Sightseeing Bus Tour

The Yuainomori (Friendly Forest) is a tourism information center offering bike rentals and sightseeing bus tours. <http://www.nasumirai.com/yuainomori/index.html>



The "Nasu-ben" sold at Yuainomori features a variety of local dishes.



Nasu Plateau Sightseeing Bus
<http://nasu-trad.com/akusesu/syatoru/kyubi.html>



DAY 2

Hotel

Mt. JEANS Nasu Gondola

Stay: 4 hours

10:00 Lunch
14:00

40 mins. by taxi

Nasu Shiobara Station

14:40
14:50

Shuttle bus

Nasu Garden Outlet

Stay: 3.5 hours

15:00
18:35

Shuttle bus

Nasu Shiobara Station

18:43
19:02



JR Tohoku
Shinakansen
Nasuno 282

Tokyo Station 20:16

Money-saving ticket recommended for the trip

JR Kanto Area Pass <http://www.jreast.co.jp/e/kantoareapass/index.html>

See back cover for details.



Mashiko is home to Mashiko-yaki pottery and indigo dyes. It brings great pleasure just walking down the streets of Mashiko, a traditional town with European influence in architecture.

Akihabara Station 8:20

Kanto Yakimono Liner

Tokyo Station 8:56



JR Tohoku Shinkansen
Yamabiko 129

Utsunomiya Station 9:45 10:28

Bus

11:17 Mashiko 10:50

(get off at Ceramic Art Messe Mashiko)

Mashiko Pottery

Stay: 1.5 hours

11:20 Lunch
12:45

15 min. on foot

Indigo Dyeing

Stay: 1 hour

13:00
14:00

25 min. on foot

Tonoike Sake Brewery

Stay: 1 hour

14:30
15:30

15 min. on foot

16:05 Mashiko Station 16:00

Bus

Utsunomiya Station 17:14 17:34

JR Tohoku Shinkansen
Yamabiko 52

Tokyo Station 18:24

Kanto Yakimono Liner

Akihabara Station 19:15

Mashiko Streets

Modern galleries, handicraft shops and cafés adorn the streets of Mashiko, exhibiting creative and artistic taste.
<http://www.mashiko-kankou.org/>



Kanto Yakimono Liner

Visitors can go to Mashiko directly by Kanto Yakimono Liner from Akihabara.

<http://www.ibako.co.jp/highway/kasama/>



Mashiko Pottery

Mashiko pottery strikes a balance between aesthetic and pragmatic purposes. Visit the museum and market place to see more.

<http://www.mashiko-kankou.org/pottery/index.shtml>



Indigo Dyeing

Indigo dye is widely celebrated in Japan. The Higeta Indigo Dyeing Workshop has been in operation since old times.
<http://www.mashiko-kankou.org/entry.shtml?1:493>



Tonoike Sake Brewery

This brewery sells all sorts of rice wine and innovative products made with sake. Coffee is also served for non-drinkers.
<http://tonoike.jp/>



More to Discover!



Twin Ring MOTEGI

Twin Ring Motegi is a motorsport race track with family-friendly facilities. http://www.twinring.jp/mobipark_m/



Nakagawa-machi Bato Hiroshige Museum of Art

This museum houses a collection of ukiyoe, a genre of woodblock prints in Japan. http://www.hiroshige.bato.tochigi.jp/batou/hp/index_e.html



Yamaage Festival

Held in July, the festival features great outdoor kabuki performances. <http://yamaage.3g-kizuna.jp/>



The Tobu express train leaving from Asakusa arrives at Ashikaga in only 70 minutes.
Take a walk in the Japanese-style streets and enjoy flower sceneries.

**Asakusa
Station 9:00**

Tobu Limited Express
Kinu 105

**Tochigi
Station 10:08
10:18**

JR Ryomo Line

**Tomita
Station 10:38**

13 min. on foot

**Ashikaga
Flower Park 11:40**
Stay: 2.5 hours 14:10

13 min. on foot

**Tomita
Station 14:33**

JR Ryomo Line

**Ashikaga
Station 14:39**

7 min. on foot

**Ashikaga
School 15:00**
Stay: 1 hour 16:00

13 min. on foot

**Ashikaga-shi
Station 16:37**

Tobu Limited Express
Ryomo 36

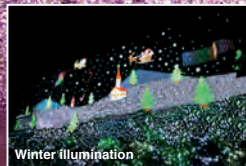
**Asakusa
Station 17:55**



Ashikaga Flower Park

The prime attraction of the park are Japanese wisterias, which blooms in different colors in spring. Light-up events are held in winter evenings.

<http://www.ashikaga.co.jp/english/index.html>



Winter illumination



Ashikaga School

The oldest college in Japan houses the oldest Confucius temple in Japan.

<http://www.city.ashikaga.tochigi.jp/site/ashikagagakko/>

More to Discover!



Watarase Hot Air Balloon Fiesta

Held in April, this event is a great time to watch balloons race across the sky.

<http://www.air-b.com/gp-info/watarase/watarase-event.htm>



Sano Premium Outlets

Shopping has never been more fun at this western-style mall.

<http://www.premiumoutlets.co.jp/en/sano/>



Ashikaga Meisen Kimono

There kimonos is characterized by its modern design and use of innovative colors.

<http://www.ashikagadouraku.jp/>



A Time Slip Tour to Explore Tradition Tochigi City



"Kuranomachi" or the town of storehouses, Tochigi City was once a prosperous commercial center when river transport was common. History and culture are well-preserved here.

**Asakusa
Station 10:00**



Tobu Limited
Express Kinu 109

**Tochigi
Station 11:09**



10 min. on foot

**Tochigi
Boat Ride** 11:30 Lunch
13:00
Stay: 1.5 hours



5 min. on foot

**Wagashi
Lessons** 13:15
14:45
Stay: 1.5 hours



5 min. on foot

**Kimono
Experience** 15:00
16:50
Stay: 2 hours



15 min. on foot

**Tochigi
Station** 17:05
17:37



Tobu Limited
Express Kinu 134

**Asakusa
Station 18:45**



Tochigi Boat Ride

This 20-minute boat ride promises a great experience of sightseeing and traditional music enjoyment.

<http://www.k-yuransen.com/>

Discount Ticket!



Tobu+Tochigi Discount Coupon

This coupon includes discounted round-trip train tickets to and from Asakusa and discounts in many restaurants and shops.
<http://www.kuranomachi.jp/news/news/2010/05/post-26.php>

A Stroll in Tochigi



Kimono Experience

Put on a beautiful, traditional kimono and take a stroll in the neighborhood (reservations required).

<http://www.kuranomachi.jp/>



Wagashi Lessons

Learn to make your own unique wagashi, or traditional Japanese confectionery, at this shop (reservations required).

<http://yamamotokashi.jp/>

Flowery World Full-bloomed flowers are a rare sight in cities.

| Shiba Sakura |

A pink carpet of sakura flowers

Ichikai-machi Sakura Park

Blooming season:

mid April to early May

<http://ichikai-sibazakura.jp/maturi/>



| Sakura | A dream world of pink sakura



Sakura Trees along Saotome

Blooming season: early to mid April

Hundreds of sakura trees form a stunning pink tunnel.

<http://www.tochigi-navi.net/sakura/73020042.html>

| Canola Flowers | These vibrant yellow beauties are a magnificent sight.



Kinu Green Park

Blooming season: mid to late April

<http://www.watanabekensetsu.jp/kinu/>

| Sunflowers | Visitors are often stunned by the beautiful sunflower fields.



Sunflower Carnival

Held in late July

<http://www.town.nogi.lg.jp/page/page000756.html>

Kaminokawa Sunflower Festival

Held in late August

http://www.town.kaminokawa.tochigi.jp/f_sangyousinkou/maturi/sanfurawa-6.htm



Tenpyo Flower Festival

Blooming season: late March to early May

Yaesakura blossom is the highlight of the event.

<https://www.tochigiji.or.jp/2367.html>

Mouth Watering Fruits Have fun picking fruits with families and friends

| Strawberry |

Igashira Strawberry Farm

Double the fun by picking and eating at the same time.

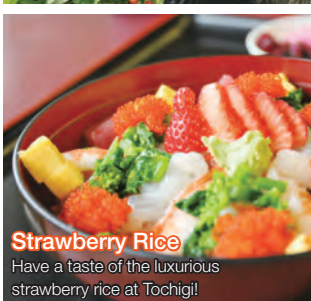
<http://www.ja-hagano.or.jp/event/season.php>



Ichigo-no-Sato

The largest strawberry farm in Tochigi.

<http://www.itigo.co.jp/>



Strawberry Rice

Have a taste of the luxurious strawberry rice at Tochigi!

| Apple |



Visit Yaita and try the juicy apples grown by local farmers.

<https://www.city.yaita.tochigi.jp/site/tokainaka-yaita/yaitano-ringo.html>



| Pear |



Haga-machi is known for sweet, juicy pears.



Tochigi Specialty Products

Bring a piece of Tochigi home to friends and family!
Enjoy the fun of picking out souvenirs and gifts for
yourself and loved ones!



Local Beer of Nikko

Beers brewed and sold locally are especially tasty.



Nikko Mizu Yokan

Yokan is a jellied dessert that you can't afford to miss.

Strawberry Cider

Take home this refreshing taste to share with friends.

Gyoza-flavored potato chips

Faithfully recreates the delicious tastes of Utsunomiya Gyoza.





Nikko Bori Carvings

Admire the craftsmanship handed down from Toshogu Shrine.



Try your hands at carving!

<http://www.n-kibori.jp>



Toy's Town - BANDAI Museum

Composed of four areas: Japan, world, Edison, and plastic model (of Gundam). A lovely toy museum for both adults and children.

<http://www.bandai-museum.jp/>



Visit Tokyo Skytree and Buy Tochigi Specialty Products

Forgot to buy souvenirs during your Tochigi trip? Fret not! Because in Tokyo Skytree Solamachi you can find "Tochimarukun Shop", a specialty shop of products and souvenirs from Tochigi. Here you may enjoy Tochigi without leaving Tokyo.



A strap of Tochimarukun, the mascot of Tochigi.



Shojinsawa spring water (with the Tochimarukun label)

Pure and clear spring water featuring a cute packaging, a must-buy!



Tochimarukun Shop

Hours: 10:00-21:00

Address: 2-18-12 Oshiage, Sumida-ku, Tokyo (Tokyo Solamachi 4F)

Access: Tokyo Metro: Oshiage Station; Tobu Railway: Tokyo Skytree Station

URL: <http://www.tochimarukun-shop.com/>



Exclusive for Foreign Tourists [Convenient and Value-for-Money Passes]



Tobu Railways

All Nikko Pass



Recommended for those who want to explore Nikko to the most. Validity: 4 days

Price: Adults 4,520 yen, Children 2,280 yen

http://www.tobu.co.jp/foreign/pass/all_pass.html

2 Day Nikko Pass



Recommended for those who want to enjoy the main sights of Nikko in two days. Validity: 2 days

Price: Adults 2,670 yen, Children 1,340 yen

http://www.tobu.co.jp/foreign/pass/2day_nikko_pass.html

Kinugawa Theme Park Pass



Recommended for families to enjoy Kinugawa's theme parks. Validity: 2 days

Price: 1. Nikko Edo Wonderland: Adults 6,180 yen, Children 3,090 yen 2. Tobu World Square: Adults 4,080 yen, Children 2,040 yen 1+2: Adults 7,380 yen, Children 3,690 yen

http://www.tobu.co.jp/foreign/pass/theme_pass.html

Where to buy:

Tobu Sightseeing Service Center (in Tobu Railway Asakusa Station)

Sells the above three passes, and provides tourist information on Nikko, Kinugawa, and Asakusa.

<http://www.tobu.co.jp/foreign/contact.html>

JR-EAST - East Japan Railway Company

JR TOKYO Wide Pass

Gets you unlimited rides around Tokyo area on Shinkansen, limited express and other trains. Makes it easy to visit Tochigi.

Price: Adults 10,000 yen, Children 5,000 yen

Validity: 3 days

<http://www.jreast.co.jp/e/tokyowidepass/>



JR EAST PASS

After fully enjoying Tochigi, extend your trip Northeastern Japan with this pass.

Validity: 5 days flexible (any five days within a 14-day period)

<http://www.jreast.co.jp/e/eastpass/index.html>

Tohoku Area

Price : Overseas Sales

Adults 19,000 yen, Children 9,500 yen

Price : Domestic Sales

Adults 20,000 yen, Children 10,000 yen

Nagano, Niigata Area

Price : Overseas Sales

Adults 17,000 yen, Children 8,500 yen

Price : Domestic Sales

Adults 18,000 yen, Children 9,000 yen



Where to buy:

Travel service center in Narita Airport, Haneda Airport, Tokyo Station, Shinagawa Station, Shibuya Station, Shinjuku Station, Ikebukuro Station, Yokohama Station, and Ueno Station.

Tochigi Tourist Information

Nikko Tourist Information Center

TEL: +81-288-54-2496

JR Nikko Station Tourist Information Center

TEL: +81-288-25-3275

Tobu Nikko Station Tourist Information Center

TEL: +81-288-53-4511

Michi-no-Eki Roadside Station "NIKKO" Tourist Information Center

TEL: +81-288-22-1525

Kinugawa Kawaji Onsen Tourist Information Center

TEL: +81-288-77-2052

Michi-no-Eki Roadside Station Yunishigawa

TEL: +81-288-78-1222

Utsunomiya City Tourist Information Center

TEL: +81-28-636-2177

Michi-no-Eki Roadside Station Nasukogen Yuainomori

TEL: +81-287-78-0233

NEXCO East Nasu-Kogen Service Area Information Outbound

TEL: +81-287-72-5973

NEXCO East Nasu-Kogen Service Area Information Inbound

TEL: +81-287-72-1606

NEXCO East Sano Service Area Information Outbound

TEL: +81-283-23-0232

NEXCO East Sano Service Area Information Inbound

TEL: +81-283-23-8855