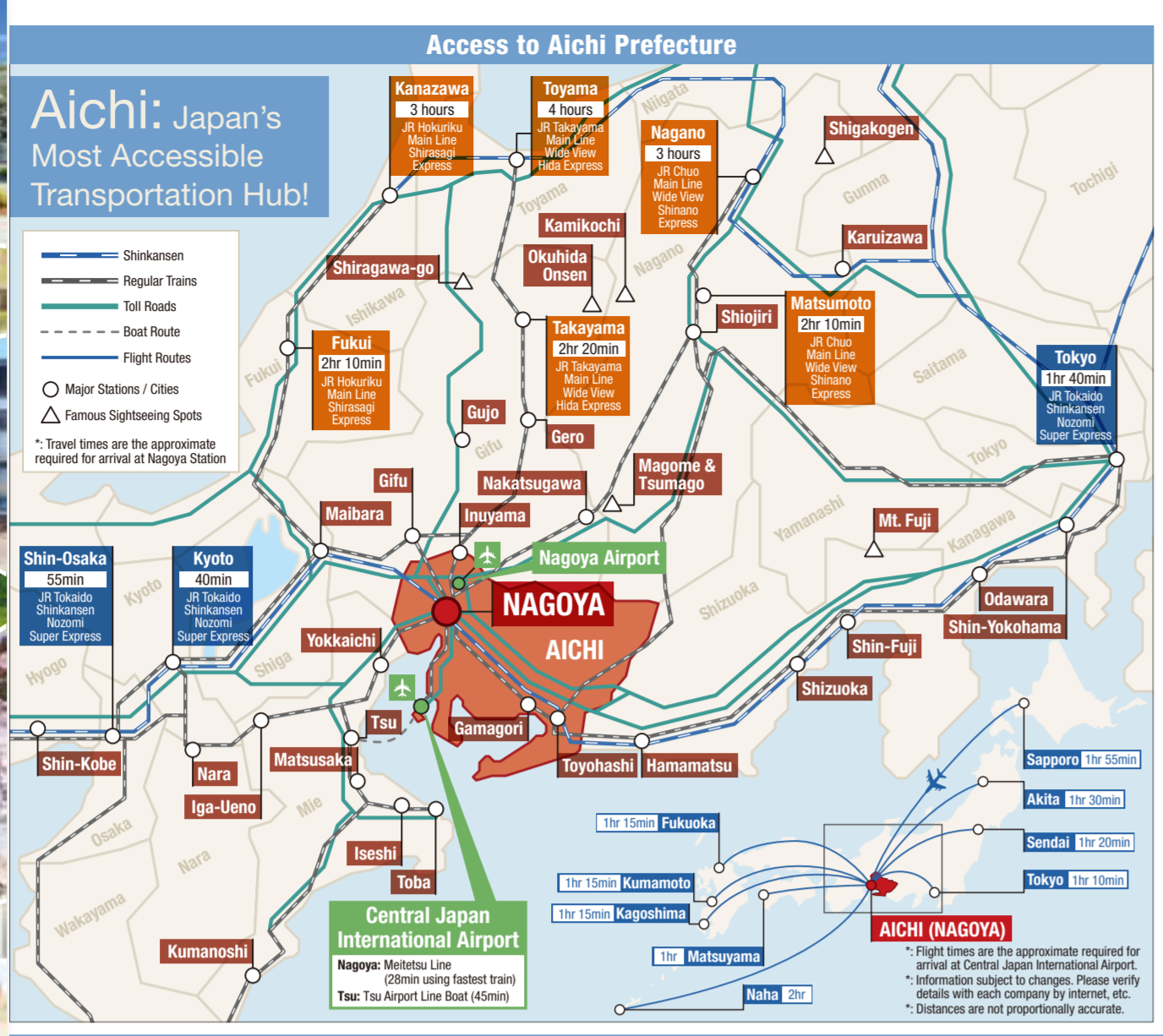




愛知 AICHI

AICHI PREFECTURE TOURIST MAP



Access to Aichi Prefecture

Shinkansen
Regular Trains
Toll Roads
Boat Route
Flight Routes

○ Major Stations / Cities
△ Famous Sightseeing Spots

* Travel times are approximate
required for arrival at Nagoya Station

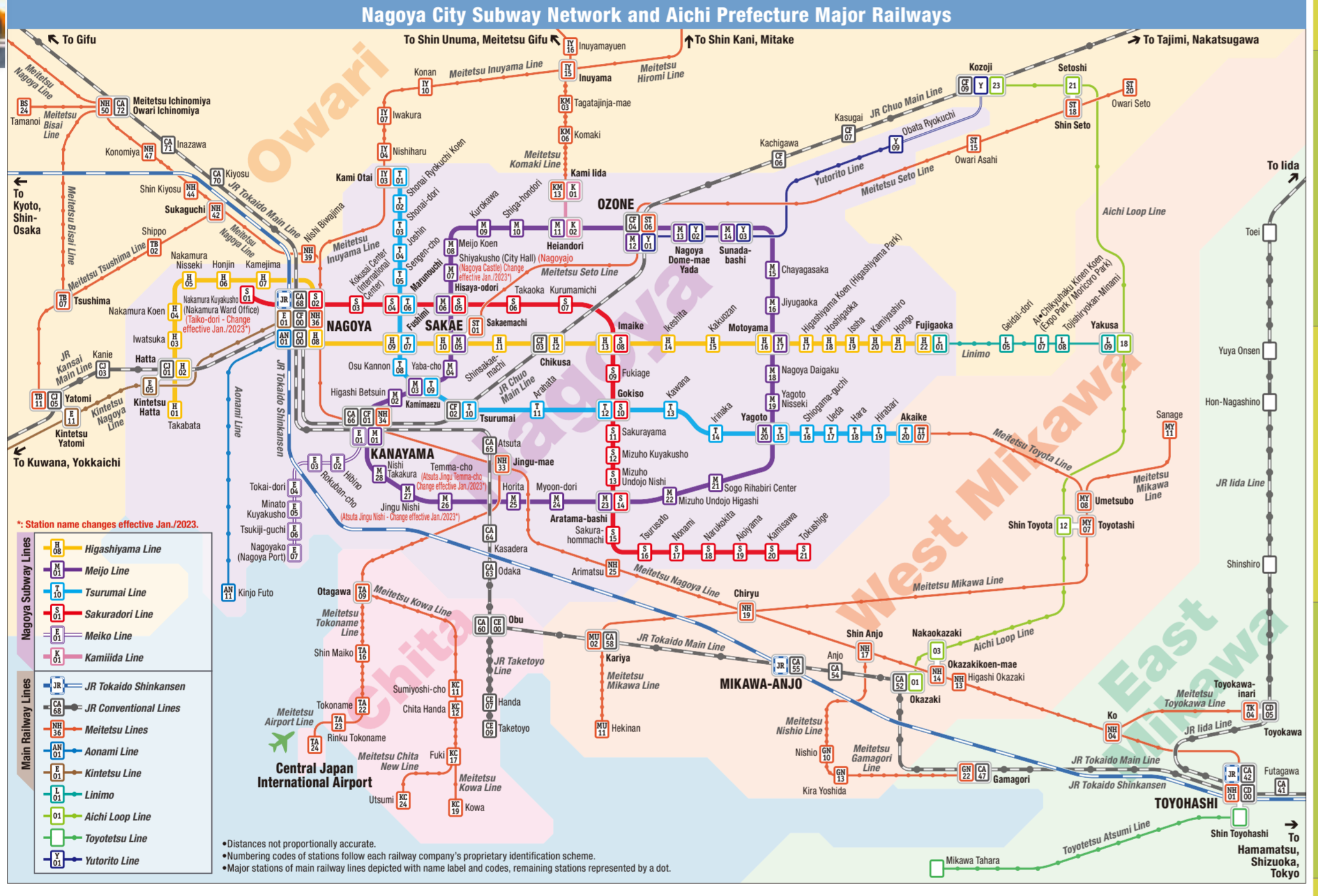
Access Main Aichi Cities from Nagoya Station

City	Arrival Station (Train Line)	Time
Inuyama	Inuyama Station (Meitetsu Inuyama Line)	30min
Tsushima	Tsushima Station (Meitetsu Tsushima Line)	35min
Seto	Owari Seto Station (Subway to Sakae Station then change to Meitetsu Seto Line)	50min
Handa	Handa Station (JR Taketoyo Line)	35min
Tokoname	Tokoname Station (Meitetsu Tokoname Line)	30min
Toyota	Toyota Station (Subway to Fushimi Station, change to Tsunami Line, then continue to Meitetsu Toyota Line via Aikaze Station)	55min
Okazaki	Okazaki Station (JR Tokaido Main Line)	30min
Nishio	Nishio Station (Meitetsu Nishio Line)	50min
Gamagori	Gamagori Station (JR Tokaido Main Line)	40min
Toyohashi	Toyohashi Station (JR Tokaido Main Line or Meitetsu Nagoya Line)	1hr
Tahara	Mikami Tahara Station (change to Toyotetsu Atsumi Line at the JR and Meitetsu Toyohashi Station)	1hr 40min

Access Main Aichi Destinations from Centrair

Destination	By	Arrival Location	Time
Nagoya Station	Train	Meitetsu Nagoya Station	28min using fastest train
Sakae (Nagoya City)	Train	Sakae Station	35min
Kinjo Pier (Nagoya City)	Bus	Oasis 21 Bus Terminal	55min
Inuyama	Train	Inuyama Station	1hr 10min
Toyota	Bus	Port of Nagoya - Kinjofuto Station	40min
Okazaki	Train	Higashi Okazaki Station (change trains at Jingu-mae Station)	1hr
Gamagori	Train	Gamagori Station (change trains at Kanayama Station)	1hr 30min
Toyohashi	Train	Toyohashi Station (change trains at Jingu-mae Station)	1hr 20min
Tokoname	Train	Tokoname Station	30min

* Information subject to change. If time is critical for your trip, please verify directly with each company.



Access these codes and get more from the web

Aichi Now WWW.AICHI-NOW.JP
OFFICIAL SITE FOR TOURISM AICHI

Access the links in the codes below and check our vast content. We got all the hottest in Aichi!

What's hot Aichi Right Now
Gourmet Information
Easy accommodation booking
Where to go FIRST?
Souvenir & Shopping Information
Discover all about Aichi
Interesting & engaging events!
Fun & time-saving itineraries!
Getting to & around
Follow our social media for seasonal tips!

Nagoya Station and Surrounding Area

1-11: Nagoya Castle
1-12: Nagoya Castle
1-13: Nagoya Castle
1-14: Nagoya Castle
1-15: Nagoya Castle
1-16: Nagoya Castle
1-17: Nagoya Castle
1-18: Nagoya Castle
1-19: Nagoya Castle
1-20: Nagoya Castle
1-21: Nagoya Castle
1-22: Nagoya Castle
1-23: Nagoya Castle
1-24: Nagoya Castle
1-25: Nagoya Castle
1-26: Nagoya Castle
1-27: Nagoya Castle
1-28: Nagoya Castle
1-29: Nagoya Castle
1-30: Nagoya Castle
1-31: Nagoya Castle
1-32: Nagoya Castle
1-33: Nagoya Castle
1-34: Nagoya Castle
1-35: Nagoya Castle
1-36: Nagoya Castle
1-37: Nagoya Castle
1-38: Nagoya Castle
1-39: Nagoya Castle
1-40: Nagoya Castle
1-41: Nagoya Castle
1-42: Nagoya Castle
1-43: Nagoya Castle
1-44: Nagoya Castle
1-45: Nagoya Castle
1-46: Nagoya Castle
1-47: Nagoya Castle
1-48: Nagoya Castle
1-49: Nagoya Castle
1-50: Nagoya Castle
1-51: Nagoya Castle
1-52: Nagoya Castle
1-53: Nagoya Castle
1-54: Nagoya Castle
1-55: Nagoya Castle
1-56: Nagoya Castle
1-57: Nagoya Castle
1-58: Nagoya Castle
1-59: Nagoya Castle
1-60: Nagoya Castle
1-61: Nagoya Castle
1-62: Nagoya Castle
1-63: Nagoya Castle
1-64: Nagoya Castle
1-65: Nagoya Castle
1-66: Nagoya Castle
1-67: Nagoya Castle
1-68: Nagoya Castle
1-69: Nagoya Castle
1-70: Nagoya Castle
1-71: Nagoya Castle
1-72: Nagoya Castle
1-73: Nagoya Castle
1-74: Nagoya Castle
1-75: Nagoya Castle
1-76: Nagoya Castle
1-77: Nagoya Castle
1-78: Nagoya Castle
1-79: Nagoya Castle
1-80: Nagoya Castle
1-81: Nagoya Castle
1-82: Nagoya Castle
1-83: Nagoya Castle
1-84: Nagoya Castle
1-85: Nagoya Castle
1-86: Nagoya Castle
1-87: Nagoya Castle
1-88: Nagoya Castle
1-89: Nagoya Castle
1-90: Nagoya Castle
1-91: Nagoya Castle
1-92: Nagoya Castle
1-93: Nagoya Castle
1-94: Nagoya Castle
1-95: Nagoya Castle
1-96: Nagoya Castle
1-97: Nagoya Castle
1-98: Nagoya Castle
1-99: Nagoya Castle
1-100: Nagoya Castle

Nagoya, a Paradise for Shopping, Sightseeing & Entertainment!

Shopping for yourself or for gifts? Check out Nagoya's major retailers!

Area	Store Name	Address	Contact
NAGAYA	JR Nagoya Station	1-1-4 Meitetsu, Nagoya-Ward	052-251-1111
	MIDLAND SQUARE	1-1-1 Meitetsu, Nagoya-Ward	052-251-1111
	Nagoya PARCO	1-1-1 Meitetsu, Nagoya-Ward	052-251-1111
	BIC Camera	1-1-1 Meitetsu, Nagoya-Ward	052-251-1111
NAGAYA	AEON Mall Atsuta	1-1-1 Meitetsu, Atsuta-Ward	052-251-1111
	AEON Mall Atsuta	1-1-1 Meitetsu, Atsuta-Ward	052-251-1111
	AEON Mall Atsuta	1-1-1 Meitetsu, Atsuta-Ward	052-251-1111
	AEON Mall Atsuta	1-1-1 Meitetsu, Atsuta-Ward	052-251-1111
NAGAYA	AEON Mall Atsuta	1-1-1 Meitetsu, Atsuta-Ward	052-251-1111
	AEON Mall Atsuta	1-1-1 Meitetsu, Atsuta-Ward	052-251-1111
	AEON Mall Atsuta	1-1-1 Meitetsu, Atsuta-Ward	052-251-1111
	AEON Mall Atsuta	1-1-1 Meitetsu, Atsuta-Ward	052-251-1111
NAGAYA	AEON Mall Atsuta	1-1-1 Meitetsu, Atsuta-Ward	052-251-1111
	AEON Mall Atsuta	1-1-1 Meitetsu, Atsuta-Ward	052-251-1111
	AEON Mall Atsuta	1-1-1 Meitetsu, Atsuta-Ward	052-251-1111
	AEON Mall Atsuta	1-1-1 Meitetsu, Atsuta-Ward	052-251-1111

Nagoya Me-Guru Sightseeing Bus

Tour Nagoya's most famous spots by the lowest-cost way, hopping in & out at will!

Single ride fare	Adult	Children
¥210	¥100	¥50

1-Day Me-Guru Pass ¥500 ¥250

Departures from Nagoya Station Bus Terminal Platform 11 (Behind JR Tower Building), from 9:30 AM to 5:00 PM (departures every 20-30min on weekends and holidays, and every 30-60min on weekdays).

Economical Bus and Subway Tickets

Best value for weekends & holidays!	Accepted on Me-Guru buses!	Adult	Children
Weekend Eco Ticket (Donichi Eco Kippu)	Accepted	¥620	¥310

Perfect when staying in Nagoya!	Adult	Children
Nagoya Subway 24-Hour Ticket	¥760	¥380

Use 1 Day Tickets for multiple bus rides on weekdays!	Adult	Children
Unlimited Bus+Subway	¥870	¥430
Unlimited Bus	¥620	¥310

Nagoya Sightseeing Information

As the base for the Owari Tokugawa Clan, Nagoya developed diverse industries. Many unique spots in the Meieki and Osu areas make it very interesting to visit.

- Nagoya Castle** (1-1-1 Nagoya, Naka-Ward) - One of Japan's Three Most Famous Castles and last effort for country unification under Tokugawa Ieyasu. After 10 years of restoration works, the gorgeous palace opened to the public in its entirety!
- Atsuta Jingu Shrine** (1-1-1 Jingu, Atsuta-Ward) - One of Japan's Three Most Important shrines, guarding the God-given sword.
- The Tokugawa Art Museum** (1-1-1 Nagoya, Naka-Ward) - The clan's sumptuous home, including a scroll of Japan's oldest novel "The Tale of Genji", a designated National Treasure.
- Japan Heritage Arimatsu Narumi traditional town** (1-1-1 Arimatsu, Naka-Ward) - See and experience the traditional art of tie-dying in the nostalgic area of Arimatsu, a designated National Treasure.
- Horikata Garden** (1-1-1 Horikata, Naka-Ward) - Opened on the 100th anniversary of a production tool, displays of Old Noritake, enjoy painting workshops, and shopping.
- Toyota Commemorative Museum of Industry and Technology** (1-1-1 Toyota, Aichi-Ward) - Experience the long technology that came before cars, by seeing giant machines operate and the whole family building.
- SCMAGLEV and Railway Park** (1-1-1 Nagoya, Naka-Ward) - A train museum with the world's fastest Linear Motor Super Conductor MAGLEV.
- Higashiyama Zoo & Botanical Gardens** (1-1-1 Higashi, Naka-Ward) - Meet charismatic Shabani, the world's most handsome western lowland gorilla, and visit an astoundingly vast garden!
- Chubu Electric Power MIRAI TOWER & Hisaya-odori Park** (1-1-1 Hisaya, Naka-Ward) - A renewed park and shopping space! A symbol of Nagoya and a designated Tangible Cultural Property, the TV Tower was renamed Chubu Electric MIRAI TOWER in May 2021.
- Chubu Electric Power MIRAI TOWER & Hisaya-odori Park** (1-1-1 Hisaya, Naka-Ward) - A renewed park and shopping space! A symbol of Nagoya and a designated Tangible Cultural Property, the TV Tower was renamed Chubu Electric MIRAI TOWER in May 2021.
- Oasis 21** (1-1-1 Hisaya, Naka-Ward) - Spaceship Aqua, a futuristic glass rooftop with a reflecting pool. Below it, a tourist information center, an event space, and lots of shops.
- Nagoya City Science Museum** (1-1-1 Hisaya, Naka-Ward) - Home to one of the world's largest planetariums, it's a fascinating place of science and fun!



1 National Treasure Inuyama Castle H1

See the stunning sight of the land with Kisagawa River as backdrop, from Japan's OLDEST extant castle, an enduring proof of architectural mastery.

From Dec. 29 to 31
Adults ¥500, Elementary and Junior High School students ¥110
0568-61-1711

15min walk from Inuyama Sta. (Meitetsu Inuyama Line)

2 Aichi Museum of Flight H2

Many rare aircraft on display, starting with the VS-11, Japan's first passenger plane. Try becoming a pilot or mechanic, or join a hands-on program at the Science Lab.

0566-39-4283
10:00 to 17:00 (last admission 16:30)
Tue, Wed, Fri, Sat, Sun, and holiday
Mon, and day after holiday, Dec. 29 to Jan. 3
Free of charge (some facilities require fee)

3 The Museum Meiji Mura H1

Step back in time to the Meiji period at this open-air museum featuring over 60 carefully dismantled, moved, and rebuilt structures.

0566-47-2314
10:00 to 17:00 (last admission 16:30)
Tue, Wed, Fri, Sat, Sun, and holiday
Mon, and day after holiday, Dec. 29 to Jan. 3
Free of charge (some facilities require fee)

4 Toyota Automobile Museum H3

About 140 rare cars tell the history since the dawn of gasoline-powered vehicles. There's also an automobile Culture Showroom with some 4,000 items on display.

0561-63-5151
10:00 to 17:00 (last admission 16:30)
Tue, Wed, Fri, Sat, Sun, and holiday
Mon, and day after holiday, Dec. 29 to Jan. 3
Free of charge (some facilities require fee)

5 Ama City Shippo Art Village H3

Almost two centuries of "Shippo-yaki" cloisonné history gathered in a museum where you can see the work of skilled artisans and utermy important pieces of art.

0561-63-5151
10:00 to 17:00 (last admission 16:30)
Tue, Wed, Fri, Sat, Sun, and holiday
Mon, and day after holiday, Dec. 29 to Jan. 3
Free of charge (some facilities require fee)

6 Ghibli Park H2

Bringing the fantastic world of Ghibli Studios' creations to reality, this facility has just been built at the Aichi Earth Expo Memorial Park, featuring buildings from the movies, and a warehouse filled with secrets!

0566-39-4283
10:00 to 17:00 (last admission 16:30)
Tue, Wed, Fri, Sat, Sun, and holiday
Mon, and day after holiday, Dec. 29 to Jan. 3
Free of charge (some facilities require fee)

7 Kiyosu Castle H2

A great reconstruction of local warlord and hero Oda Nobunaga's castle, where visitors can get to know the history of the city during the Sengoku period.

0566-47-2314
10:00 to 17:00 (last admission 16:30)
Tue, Wed, Fri, Sat, Sun, and holiday
Mon, and day after holiday, Dec. 29 to Jan. 3
Free of charge (some facilities require fee)

8 Tsushima Shrine G3

Over 1,450 years of a history featuring the most famous samurai and one of Japan's three major river festivals, Tanno Matsuri, featuring gorgeously decorated boats.

0566-28-3216
10:00 to 17:00 (last admission 16:30)
Tue, Wed, Fri, Sat, Sun, and holiday
Mon, and day after holiday, Dec. 29 to Jan. 3
Free of charge (some facilities require fee)

9 Maneki-Neko Museum J2

In the famous pottery city of Seto, see Japan's largest beckoning cat museum, displaying statues collected from throughout Japan and offering experiential, hands-on activities.

0566-47-2314
10:00 to 17:00 (last admission 16:30)
Tue, Wed, Fri, Sat, Sun, and holiday
Mon, and day after holiday, Dec. 29 to Jan. 3
Free of charge (some facilities require fee)

1 Himakajima and Shinojima Islands I7

Coastal islands where nature is strong, and renowned for their sea produce, like octopus "tako" and the pufferfish "fugu".

0569-68-2388 (Himakajima)
0569-67-3700 (Shinojima)
10:00 to 17:00 (last admission 16:30)
Tue, Wed, Fri, Sat, Sun, and holiday
Mon, and day after holiday, Dec. 29 to Jan. 3
Free of charge (some facilities require fee)

2 Mizkan Museum (MIM) H5

Themed on "jozo", the culture of brewed food, you'll learn the history and culture of vinegar and other Aichi staple foods and how it shaped the area's history through time.

0569-24-1111
10:00 to 17:00 (last admission 16:30)
Tue, Wed, Fri, Sat, Sun, and holiday
Mon, and day after holiday, Dec. 29 to Jan. 3
Free of charge (some facilities require fee)

3 Tokoname Pottery Footpath H5

Paved with countless ceramic items fired at the area's historically important kilns, this hiking path will lead you to the gigantic "maneki-neko" beckoning cat!

0569-34-8888
10:00 to 17:00 (last admission 16:30)
Tue, Wed, Fri, Sat, Sun, and holiday
Mon, and day after holiday, Dec. 29 to Jan. 3
Free of charge (some facilities require fee)

4 Handa Red Brick Building H5

Once a beer brewery, this German-style building is an important cultural asset where a locally brewed beer is still served and various events held year-round.

0569-24-1111
10:00 to 17:00 (last admission 16:30)
Tue, Wed, Fri, Sat, Sun, and holiday
Mon, and day after holiday, Dec. 29 to Jan. 3
Free of charge (some facilities require fee)

5 INAX Museums H5

Six large facilities displaying ceramic items from around the world, with mosaic art, tiles, technology, and hands-on activities.

0569-24-1111
10:00 to 17:00 (last admission 16:30)
Tue, Wed, Fri, Sat, Sun, and holiday
Mon, and day after holiday, Dec. 29 to Jan. 3
Free of charge (some facilities require fee)

6 Kunizakari Sake no Bunkan Museum H5

A 200-year old sake depot turned cultural landmark learn sake's unique evolution, taste some or even make some yourself. Great place for shopping souvenirs.

0569-24-1111
10:00 to 17:00 (last admission 16:30)
Tue, Wed, Fri, Sat, Sun, and holiday
Mon, and day after holiday, Dec. 29 to Jan. 3
Free of charge (some facilities require fee)

7 Minamichita Flower Park "Kanko Nuan Rana Hiroba" H7

Walk to the middle of a massive field of ever blooming flowers and be amazed by the wonderful sight of them completely filling your view!

0569-24-1111
10:00 to 17:00 (last admission 16:30)
Tue, Wed, Fri, Sat, Sun, and holiday
Mon, and day after holiday, Dec. 29 to Jan. 3
Free of charge (some facilities require fee)

8 Honen Festival of Tagata Shrine H2

Wildly popular among overseas tourists, a two-meter long male figure carved in wood is paraded around on a portable shrine, a ritual with ancient roots.

0569-24-1111
10:00 to 17:00 (last admission 16:30)
Tue, Wed, Fri, Sat, Sun, and holiday
Mon, and day after holiday, Dec. 29 to Jan. 3
Free of charge (some facilities require fee)

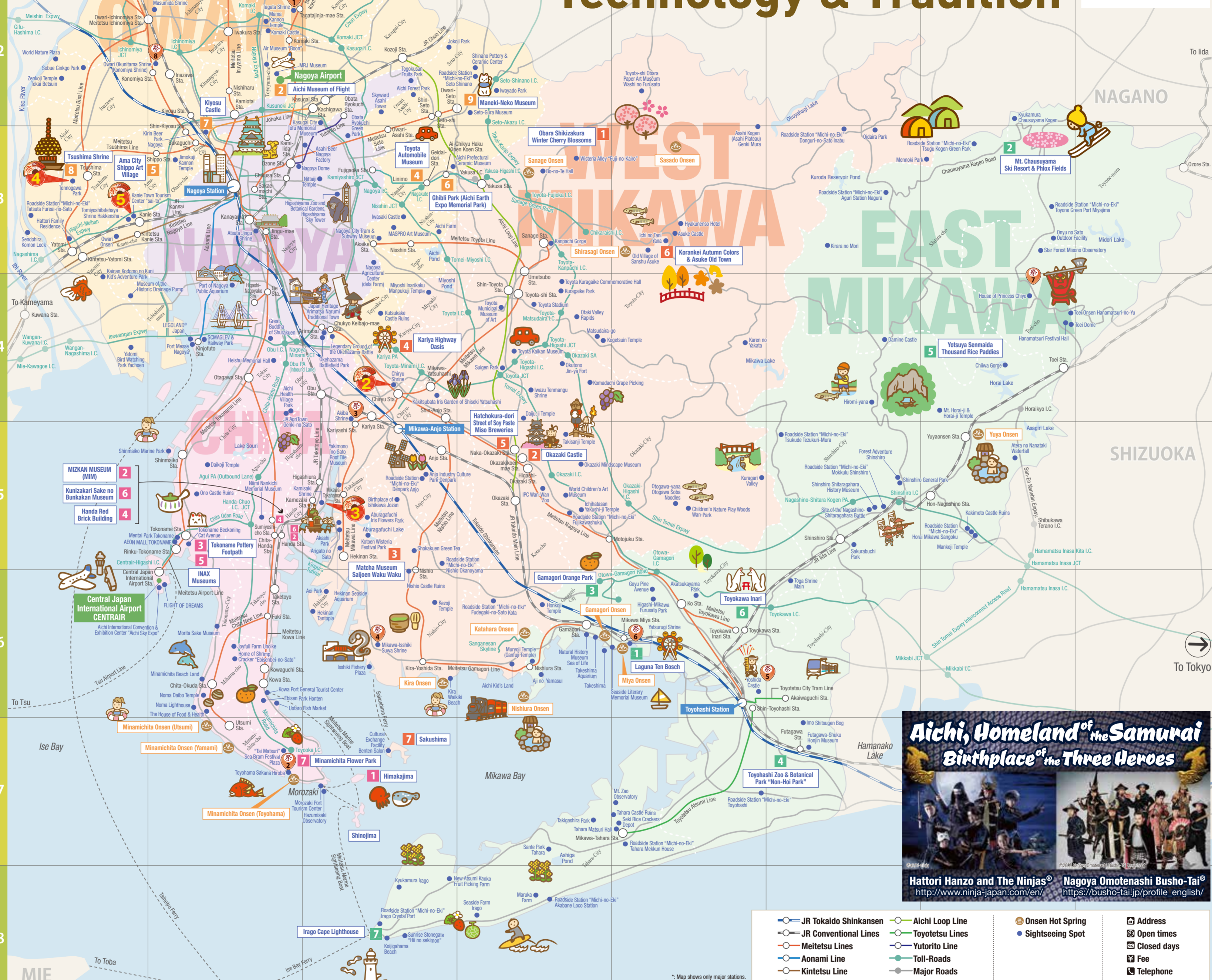
9 Toyohama Sea Bream "Tai" Festival H7

Giant sea bream shirushi are paraded around town, then they enter the ocean. Impressive festival by men of the sea.

0569-24-1111
10:00 to 17:00 (last admission 16:30)
Tue, Wed, Fri, Sat, Sun, and holiday
Mon, and day after holiday, Dec. 29 to Jan. 3
Free of charge (some facilities require fee)

All Aichi paths lead you to a world of Technology & Tradition

"Heart" of JAPAN
Technology & Tradition



Aichi, Homeland of the Samurai
Birthplace of the Three Heroes

Hattori Hanzo and The Ninjas | Nagoya Omotenashi Busho-Tai®

0569-24-1111 | 0567-95-1111

Each Season Filled with Lots of Other Traditional Festivals!

SPRING

- 1 Honen Festival of Tagata Shrine H2
- 2 Toyohama Sea Bream "Tai" Festival H7
- 3 Kariya Mando Festival H4
- 4 Mikawa Isshiki Lantern Festival I6
- 5 Hand-Held Cannon Fireworks "Tezutsu Hanabi" K6
- 6 Miya Festival K6
- 7 Hana Festivals M4
- 8 Konomiya Naked Festival "Hadaka Matsuri" H2

SUMMER

- 1 Floats of Inuyama Festival H1
- 2 Floats of Kamezaki Shiohi Festival I5
- 3 Danjiribune Boats of Owari-Tsushima Tenno Festival G5
- 4 Danjiribune Boat and Myoshi-Nagashi of Sunari Festival G3

AUTUMN

- 1 Obara Shikizakura Winter Cherry Blossoms J3
- 2 Okazaki Castle J5
- 3 Hatokura-dori Street of Soy Paste Miso Breweries J5
- 4 Kariya Highway Oasis I4
- 5 Yotsuya Senmadai Thousand Rice Paddies M4
- 6 Toyokawa Inari Shrine & Temple K6
- 7 Irigo Cape Lighthouse I8

WINTER

- 1 Obara Shikizakura Winter Cherry Blossoms J3
- 2 Okazaki Castle J5
- 3 Hatokura-dori Street of Soy Paste Miso Breweries J5
- 4 Kariya Highway Oasis I4
- 5 Yotsuya Senmadai Thousand Rice Paddies M4
- 6 Toyokawa Inari Shrine & Temple K6
- 7 Irigo Cape Lighthouse I8

WEST MIKAWA

Birthplace of Hero Tokugawa Iyeyasu, this is a romantic place where samurai dwelled and great historic events took place. Also home to the famous soy paste Hatcho Miso and the nostalgic town of its origin!

1 Obara Shikizakura Winter Cherry Blossoms J3

Spring cherry blossoms are beautiful. Maple trees in autumn, dreamy. See BOTH in this rare natural spectacle, while exploring the ancient art of Wachi Japanese paper.

0566-35-3808
10:00 to 17:00 (last admission 16:00)
Tue, Wed, Fri, Sat, Sun, and holiday
Mon, and day after holiday, Dec. 29 to Jan. 3
Free of charge (some facilities require fee)

2 Okazaki Castle J5

Deemed as birthplace of hero Tokugawa Iyeyasu, it saw much conflict but now is a museum and home to fair cherry trees.

0561-63-5151
10:00 to 17:00 (last admission 16:30)
Tue, Wed, Fri, Sat, Sun, and holiday
Mon, and day after holiday, Dec. 29 to Jan. 3
Free of charge (some facilities require fee)

3 Hatokura-dori Street of Soy Paste Miso Breweries J5

You'll see why "Miso" has the ability to make you happy, and other interesting facts about this legendary brewed food that is the pride of Aichi!

0566-47-2314
10:00 to 17:00 (last admission 16:30)
Tue, Wed, Fri, Sat, Sun, and holiday
Mon, and day after holiday, Dec. 29 to Jan. 3
Free of charge (some facilities require fee)

4 Kariya Highway Oasis I4

A unique road stop that has it all: amusement park, "Onsen" hot springs, delicious food, shops and more. Even the exquisite and beautiful toilets are worth a look!

0566-35-3808
10:00 to 17:00 (last admission 16:30)
Tue, Wed, Fri, Sat, Sun, and holiday
Mon, and day after holiday, Dec. 29 to Jan. 3
Free of charge (some facilities require fee)

5 Yotsuya Senmadai Thousand Rice Paddies M4

Impressive facets of landscaping, the ancient terraced paddy cut into the hillsides are a sight to behold anytime of year. Grape and melon seasons are also popular.

0567-95-1111
10:00 to 17:00 (last admission 16:30)
Tue, Wed, Fri, Sat, Sun, and holiday
Mon, and day after holiday, Dec. 29 to Jan. 3
Free of charge (some facilities require fee)

6 Toyokawa Inari Shrine & Temple K6

One of the three most important Inari Shrines of Japan, this sacred place is guarded by an overwhelming count of white fox statues and other impressive constructions.

0567-95-1111
10:00 to 17:00 (last admission 16:30)
Tue, Wed, Fri, Sat, Sun, and holiday
Mon, and day after holiday, Dec. 29 to Jan. 3
Free of charge (some facilities require fee)

7 Irigo Cape Lighthouse I8

One of Japan's top 50 must-see beacons and oldest in Aichi, it sits at the vast entrance to Mikawa Bay and is one of the most famous "lover's sanctuaries".

0569-24-1111
10:00 to 17:00 (last admission 16:30)
Tue, Wed, Fri, Sat, Sun, and holiday
Mon, and day after holiday, Dec. 29 to Jan. 3
Free of charge (some facilities require fee)

8 Hamanako Lake

Warm climate and the unique culture of Asumi Peninsula and its people both reinforce the great power of nature permeating this blessed area. Perfect for enjoying outdoor settings and delicious food!

0567-95-1111
10:00 to 17:00 (last admission 16:30)
Tue, Wed, Fri, Sat, Sun, and holiday
Mon, and day after holiday, Dec. 29 to Jan. 3
Free of charge (some facilities require fee)

9 Toyokawa Inari Shrine & Temple K6

One of the three most important Inari Shrines of Japan, this sacred place is guarded by an overwhelming count of white fox statues and other impressive constructions.

0567-95-1111
10:00 to 17:00 (last admission 16:30)
Tue, Wed, Fri, Sat, Sun, and holiday
Mon, and day after holiday, Dec. 29 to Jan. 3
Free of charge (some facilities require fee)

10 Irigo Cape Lighthouse I8

One of Japan's top 50 must-see beacons and oldest in Aichi, it sits at the vast entrance to Mikawa Bay and is one of the most famous "lover's sanctuaries".

0569-24-1111
10:00 to 17:00 (last admission 16:30)
Tue, Wed, Fri, Sat, Sun, and holiday
Mon, and day after holiday, Dec. 29 to Jan. 3
Free of charge (some facilities require fee)

11 Irigo Cape Lighthouse I8

One of Japan's top 50 must-see beacons and oldest in Aichi, it sits at the vast entrance to Mikawa Bay and is one of the most famous "lover's sanctuaries".

0569-24-1111
10:00 to 17:00 (last admission 16:30)
Tue, Wed, Fri, Sat, Sun, and holiday
Mon, and day after holiday, Dec. 29 to Jan. 3
Free of charge (some facilities require fee)

12 Irigo Cape Lighthouse I8

One of Japan's top 50 must-see beacons and oldest in Aichi, it sits at the vast entrance to Mikawa Bay and is one of the most famous "lover's sanctuaries".

0569-24-1111
10:00 to 17:00 (last admission 16:30)
Tue, Wed, Fri, Sat, Sun, and holiday
Mon, and day after holiday, Dec. 29 to Jan. 3
Free of charge (some facilities require fee)

13 Irigo Cape Lighthouse I8

One of Japan's top 50 must-see beacons and oldest in Aichi, it sits at the vast entrance to Mikawa Bay and is one of the most famous "lover's sanctuaries".

0569-24-1111
10:00 to 17:00 (last admission 16:30)
Tue, Wed, Fri, Sat, Sun, and holiday
Mon, and day after holiday, Dec. 29 to Jan. 3
Free of charge (some facilities require fee)

14 Irigo Cape Lighthouse I8

One of Japan's top 50 must-see beacons and oldest in Aichi, it sits at the vast entrance to Mikawa Bay and is one of the most famous "lover's sanctuaries".

0569-24-1111
10:00 to 17:00 (last admission 16:30)
Tue, Wed, Fri, Sat, Sun, and holiday
Mon, and day after holiday, Dec. 29 to Jan. 3
Free of charge (some facilities require fee)

15 Irigo Cape Lighthouse I8

One of Japan's top 50 must-see beacons and oldest in Aichi, it sits at the vast entrance to Mikawa Bay and is one of the most famous "lover's sanctuaries".

0569-24-1111
10:00 to 17:00 (last admission 16:30)
Tue, Wed, Fri, Sat, Sun, and holiday
Mon, and day after holiday, Dec. 29 to Jan. 3
Free of charge (some facilities require fee)

16 Irigo Cape Lighthouse I8

One of Japan's top 50 must-see beacons and oldest in Aichi, it sits at the vast entrance to Mikawa Bay and is one of the most famous "lover's sanctuaries".

0569-24-1111
10:00 to 17:00 (last admission 16:30)
Tue, Wed, Fri, Sat, Sun, and holiday
Mon, and day after holiday, Dec. 29 to Jan. 3
Free of charge (some facilities require fee)

17 Irigo Cape Lighthouse I8

One of Japan's top 50 must-see beacons and oldest in Aichi, it sits at the vast entrance to Mikawa Bay and is one of the most famous "lover's sanctuaries".

0569-24-1111
10:00 to 17:00 (last admission 16:30)
Tue, Wed, Fri, Sat, Sun, and holiday
Mon, and day after holiday, Dec. 29 to Jan. 3
Free of charge (some facilities require fee)

18 Irigo Cape Lighthouse I8

One of Japan's top 50 must-see beacons and oldest in Aichi, it sits at the vast entrance to Mikawa Bay and is one of the most famous "lover's sanctuaries".

0569-24-1111
10:00 to 17:00 (last admission 16:30)
Tue, Wed, Fri, Sat, Sun, and holiday
Mon, and day after holiday, Dec. 29 to Jan. 3
Free of charge (some facilities require fee)