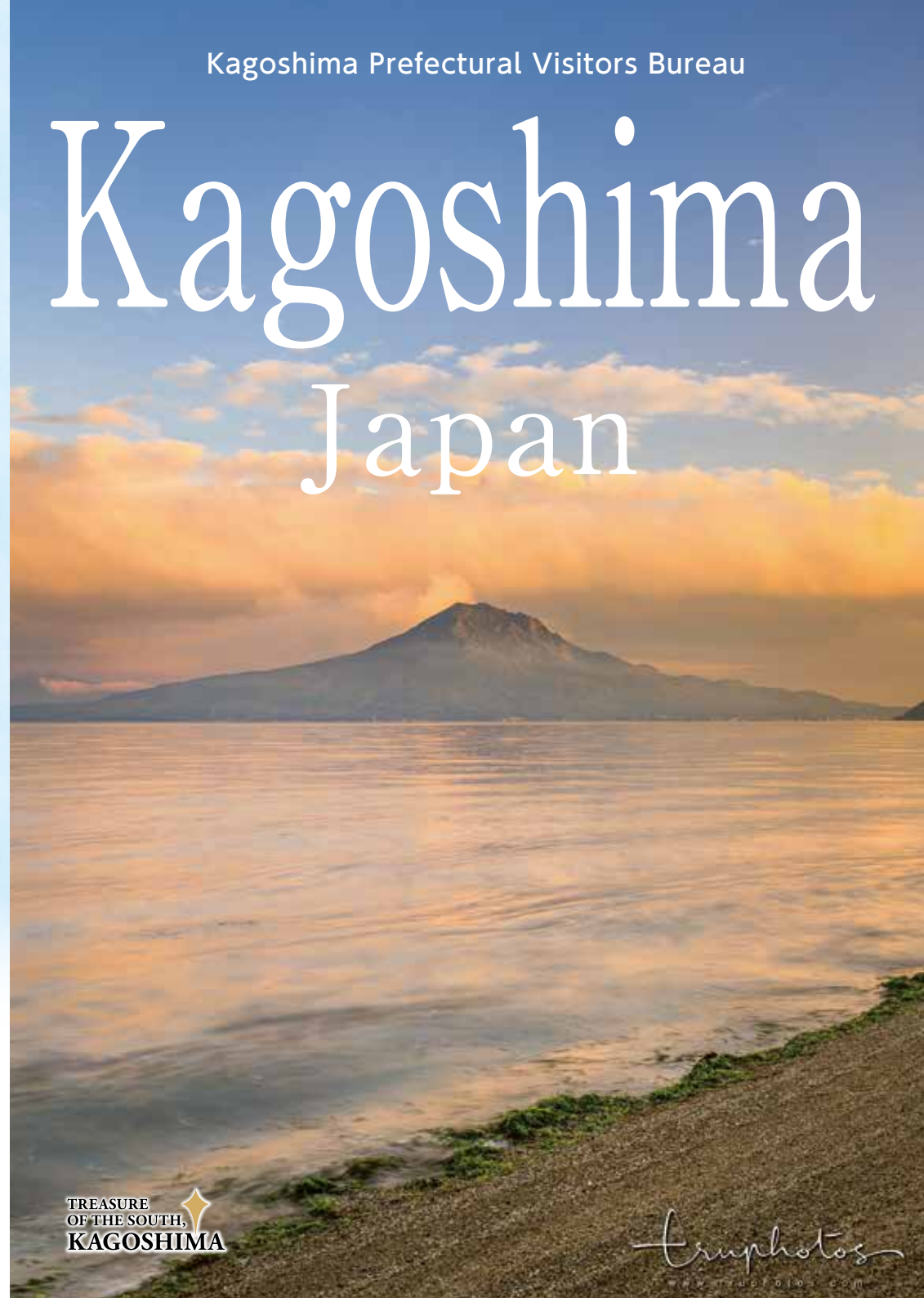


International Flight



Kagoshima Prefectural Visitors Bureau

# Kagoshima Japan



Kagoshima Prefecture Website

**Kagoshima Prefectural Visitors Bureau**

9-1 Meizan-cho, Kagoshima-shi, Kagoshima 892-0821  
TEL:099-223-5771 FAX:099-225-7484



Facebook

11.2023

TREASURE  
OF THE SOUTH,  
KAGOSHIMA

*tripphotos*  
www.tripphotos.com

# Which area will you visit?

Stretching 600 kilometers north to south, Kagoshima Prefecture is made up of various areas, each with its own unique charms. Come on down and enjoy the sightseeing spots and gourmet delights on offer in each area.

**Kirishima & Hokusatsu Area**  
P17~18  
Kirishima Mountain Range  
Kirishima Jingu Shrine  
Kagoshima Airport

**Kagoshima & Sakurajima Area**  
P21~23  
Kagoshima Chuo Sta.  
Sakurajima

**Ibusuki & Nansatsu Area**  
P19~20  
Mt. Kaimon-dake  
Healthy Land "Tamatebako" Outdoor Hot Springs

**Osumi Area**  
P24  
Kirishima Mountain Range Trekking (Takachiho)  
Kanoya Rose Garden  
Ogawa Falls

**Tanegashima & Yakushima Area**  
P25~26  
Tokara Islands  
Shiratani Unsui-kyo Ravine (Yakushima)

**Amami Area**  
P27~28  
Kikajima  
Amami-Oshima  
Tokunoshima  
Okinerabujima  
Yoronjima  
Yurigahama (Yoronjima)

600km

Kagoshima Prefecture Website

### Map of islands

Miyazaki  
Kagoshima Airport  
Kagoshima Port  
Koshikishima Islands  
Tanegashima  
Yakushima  
Tokara Islands  
Kikajima  
Amami-Oshima  
Tokunoshima  
Okinerabujima  
Yoronjima  
Okinawa



Sengan-en



Amu Plaza Kagoshima, Kagoshima-chuo Station



Chiringashima



Healthy Land "Tamatebako" Outdoor Hot Springs





### Wake Park Wisteria Festival

Neatly presented wisteria from across the country bloom brilliantly. A beautiful sight that might seem to have fallen from heaven



### Rokugatsudo Lantern Festival

Night stalls line the streets as the soft light of the "toro" lanterns shines beautifully.



### Sunflowers at Nishi-Oyama Station

Fields of sunflowers at Nishi-Oyama Station, the southernmost train station operated by Japan Railways

# Spring Summer



### Rows of cherry blossom trees along the Kotsuki River

The Kotsuki River runs through the center of Kagoshima City. The rows of cherry blossom trees along its banks set the scene for a wonderful leisurely stroll.



### Fukiage Sand Festival

The world's biggest sand sculpture event with around 100 sand sculptures, the tallest of which are over eight meters high.



### Yurigahama Beach

A phantasmal beach that appears during the low waters of a spring tide. The location and size of the beach also change from day to day.

## Event Calendar

### March

- Cherry blossom viewing: Late March to early April
  - Maruoka Park (Kirishima City)
  - Kotsuki River (Kagoshima City)
  - Chiran Peace Park (Minamikyushu City)
  - Kagoshima Marathon (Kagoshima City)

### April

- Kagoshima Spring Festival Dai-HANYA (Kagoshima City)
- Wake Park Wisteria Festival (Kirishima City)

### May

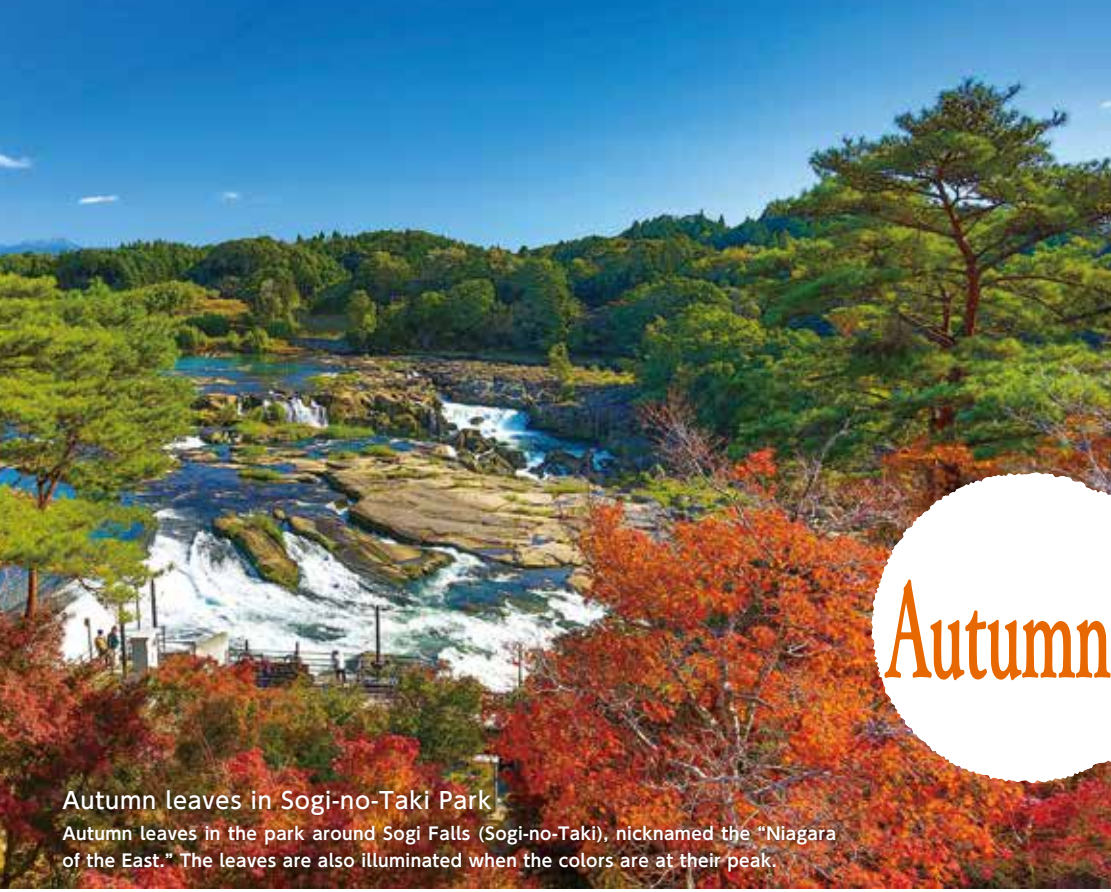
- Sand Festa at Fukiagehama (Minamisatsuma City)

### July

- Rokugatsudo Lantern Festival at Terakuni-jinja Shrine (Kagoshima City)
- Chiran Neputa Festival (Minamikyushu City)
- Ogionsa Festival (Kagoshima City)
- Kirishima International Music Festival (Kirishima City and other places)

### August

- Amami Festival (Amami-Oshima)
- Tanegashima Gun Festival (Tanegashima)
- Kagoshima Kinko Bay Summer Night Fireworks Display (Kagoshima City)



### Autumn leaves in Sogi-no-Taki Park

Autumn leaves in the park around Sogi Falls (Sogi-no-Taki), nicknamed the “Niagara of the East.” The leaves are also illuminated when the colors are at their peak.



### Nanohana Marathon

The first open full marathon of the year in Japan. Yellow rape blossoms in full bloom add color to the course.



### Tenmonkan Millionation

Around a million LED lights illuminate Tenmonkan, Kagoshima’s foremost shopping district.

# Autumn Winter



### Dragon’s Eye in Tatsugo-cho

As the photo shows, the view of the sun setting behind the Kaganbana Tunnel in the town of Tatsugo, Amami-Oshima, is a sight to behold.



### Cosmos flowers in Kirishimagaoka Park

The tapestry of pink and white cosmos flowers stretching out under the autumn sky also soothes the mind.



### Mt. Miyanoura-dake (Kyushu’s highest peak)

Mt. Miyanoura-dake on Yakushima Island stands at 1,936 meters high. The snowscape covering this mountain, the highest point of Kyushu, is an unexpected beauty to behold in the south of Japan. Yakushima’s mountain range and summit, which exceeds 1,000 meters in altitude, are also known as the Alps on the Ocean. Visit and fully experience the true joy of mountain climbing and these treasures of the natural world.

Photograph by: Yakushima Town

## Event Calendar



### September

- Sendai Great Tug-of-War (Satsuma-Sendai City)

### October

- Kanoya Rose Festival (Kanoya City)
- Koyama Yabusame (Horseback Archery) Festival (Kimotsuki Town)
- Tour de Minamisatsuma (Minamisatsuma City)

### November

- Ohara Festival (Kagoshima City)
- Shochu Street (Kagoshima City)
- Miyama Pottery Festival (Hioki City)
- Yagoro-don Festival (Soo City)
- Sogi-no-Taki Park Momiji Matsuri (Isa City)

### December

- Tenmonkan Millionation (Kagoshima City)
- Minato Odori Park Illumination (Kagoshima City)
- Running Sakurajima (Kagoshima City)
- New Year’s Eve and New Year’s Day festivals at Kirishima-jingu Shrine (Kirishima City)

### January

- Nanohana Marathon (Ibusuki City)

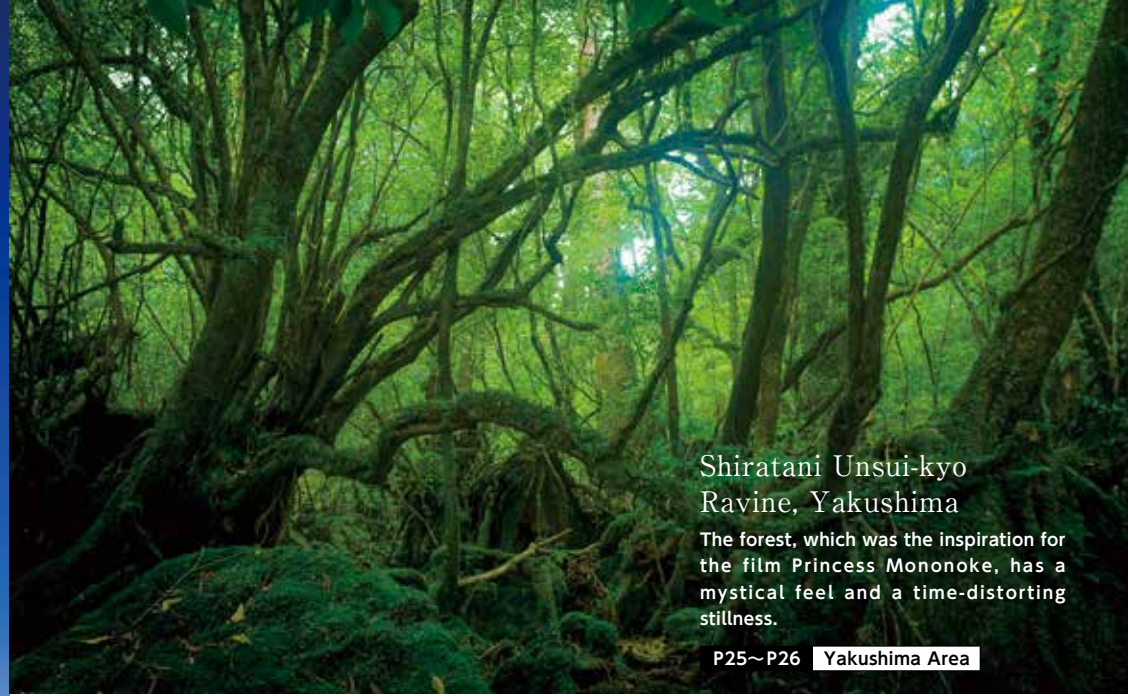
### February

- Cycling Yakushima (Yakushima)



# Nature

Stretching 600 kilometers north to south, Kagoshima Prefecture is one of the world's great natural treasure troves, a world of mysterious islands including the magnificent Sakurajima.



## Shiratani Unsui-kyo Ravine, Yakushima

The forest, which was the inspiration for the film Princess Mononoke, has a mystical feel and a time-distorting stillness.

P25~P26 **Yakushima Area**

## Sogi-No-Taki Waterfall

Boasting an impressive scale, with a width of 210 meters and a height of 12 meters, the Sogi Falls are nicknamed the "Niagara of the East."

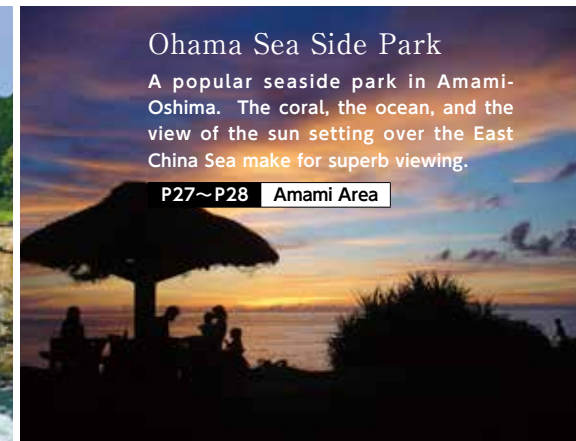
P17~P18 **Hokusatsu Area**



## Ohama Sea Side Park

A popular seaside park in Amami-Oshima. The coral, the ocean, and the view of the sun setting over the East China Sea make for superb viewing.

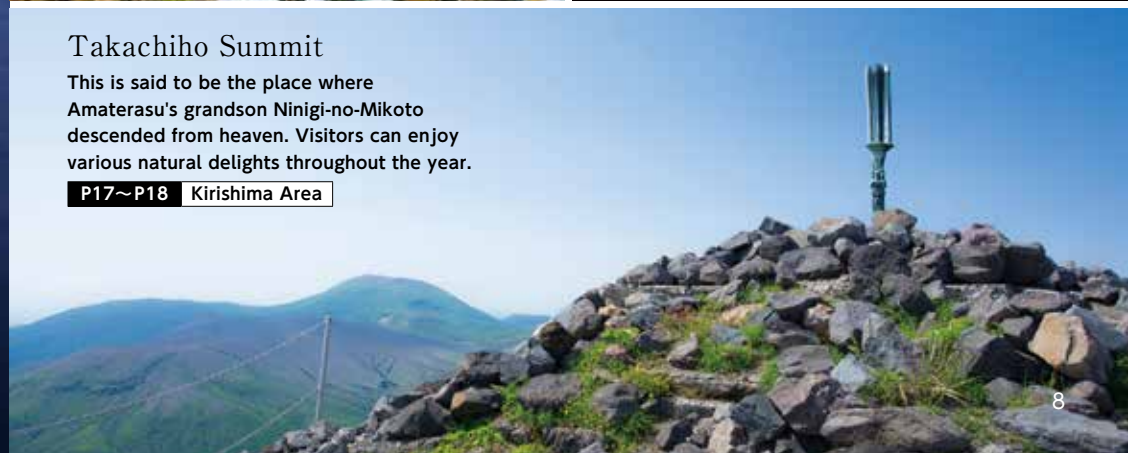
P27~P28 **Amami Area**



## Takachiho Summit

This is said to be the place where Amaterasu's grandson Ninigi-no-Mikoto descended from heaven. Visitors can enjoy various natural delights throughout the year.

P17~P18 **Kirishima Area**



## Sakurajima

One of the few active volcanoes in the world. The island said to change color seven times each day, capturing the hearts and minds of those who witness it.

P21~P23 **Sakurajima Area**



Kagoshima Prefecture  
Website

# Onsen

With 100 hot spring areas and the second largest of spring sources in Japan, Kagoshima Prefecture is a hot spring paradise. Visitors can enjoy various different types of hot springs.



## Healthy Land “Tamatebako” Outdoor Hot Springs

Open-air hot springs offering a view of the vast ocean and Mt. Kaimon-dake. Visitors can enjoy some special time while feeling as though they are floating in the sea.

P19~P20 Ibusuki Area



Kagoshima Prefecture  
Website



## Open-air hot springs with a view of Sakurajima.

Open-air hot springs situated on a hill in the center of Kagoshima City. Visitors can relax and unwind while commanding a view of Kinko Bay and Sakurajima.

P21~P23 Kagoshima Area



## Mud Bath

These mud baths/packs, made using mud from the spring source, are famous. With a beautifying effect on the skin, the treatment is popular with women.

P17~P18 Kirishima Area



## Hirauchi Kaichu Onsen

This hot spring, which is only accessible during the two low tides each day, wells up from inside the sea. Become one with the ocean as you bathe.

P25~P26 Yakushima Area

## Natural Steam Sand Bath

One of Japan's leading natural steam sand baths. The staff will bury you in sand as you lie on a beach where natural hot spring water wells up from beneath.

P19~P20 Ibusuki Area



# Experiences

Make your trip even more enjoyable with precious experiences, including adventures in Kagoshima's rich nature and shrine visits offering a taste of Japanese culture.

## Koshikishima Cliff Cruising

In this spectacular cruising adventure, you can catch a glimpse of oddly-shaped rocks and majestic cliffs formed by the natural processes of the East China Sea.

P17~P18 **Hokusatsu Area**



Kagoshima Prefecture  
Website



### Mori-no-Eki Tarumizu Canyoning in the Sarugajo Ravine

Visitors can enjoy a variety of water play in riverside spots featuring oddly-shaped and giant granite rocks. This is the perfect place to escape the summer heat.

P24 **Osumi Area**



### Fruit Picking

Visitors can enjoy picking strawberries (December to June) and grapes (July to September) cultivated in the warm local climate.



### Surfing in Tanegashima

On Tanegashima, visitors can enjoy surfing all year round. There are scores of popular surfing spots.

P25~P26 **Tanegashima Area**



### Visit Kirishima Jingu Shrine in a Kimono

Rent a kimono and pay a visit to Kirishima Jingu Shrine. The experience offers a thorough taste of Japanese culture.

P17~P18 **Kirishima Area**



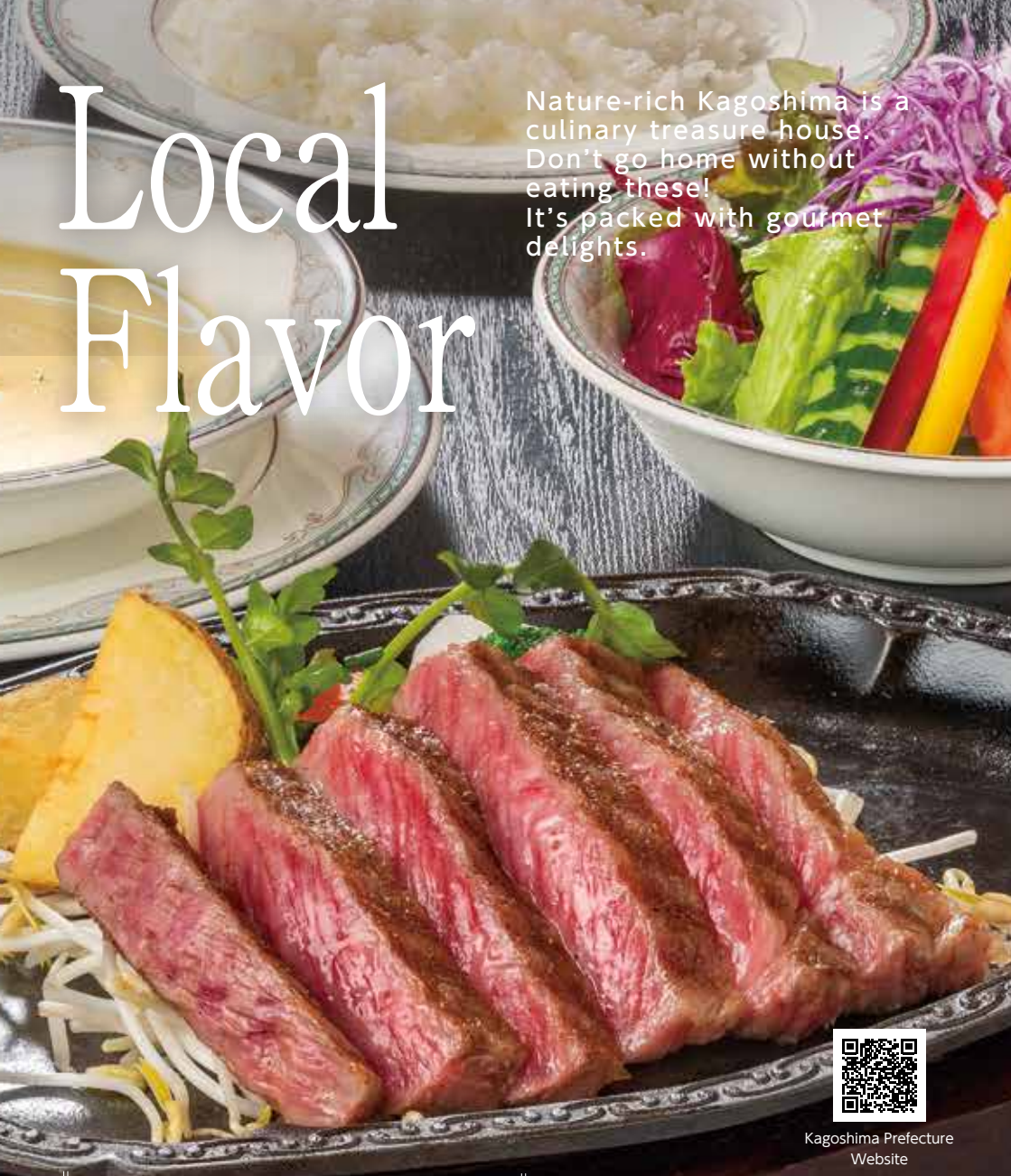
### Sea Kayaking in a Mangrove

This popular canoe tour traverses Japan's second largest mangrove forest.

P27~P28 **Amami Area**

# Local Flavor

Nature-rich Kagoshima is a culinary treasure house. Don't go home without eating these! It's packed with gourmet delights.



## Kagoshima Kuroushi steak

Kagoshima Kuroushi beef is Japan's best. Once tasted, Kagoshima Kuroushi exquisite dish is never forgotten.



Kagoshima Prefecture Website

A contest held once every five years to determine the best wagyu in Japan  
**12th National Competitive Exhibition of Wagyu**

1st prize in 6 out of 9 categories.  
 Division 4 won Prime Minister Award in Breeding Bull category.

**OVERALL CHAMPION**



## Kurobuta Pork shabu-shabu

Meat so soft it melts in your mouth. Kagoshima's hallmark dish is not to be missed!

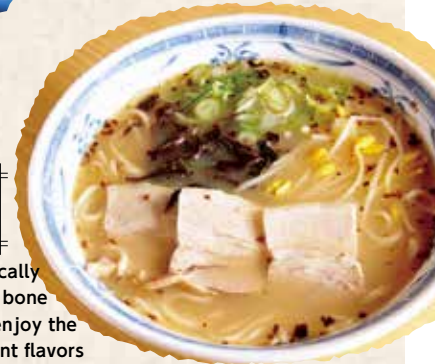
## Kagoshima Kampachi Amberjack sashimi

Kagoshima is the top cultivator of greater amberjack in Japan. Savor the springy texture!



## Ramen

The soup is basically made from pork bone broth. You can enjoy the variety of different flavors at restaurants.



## Shirokuma Shaved Ice

Fluffy shaved ice topped with fruits and condensed milk. This local Kagoshima desert is cool and sweet.



## Shochu

### Aha! Shochu

When in Kagoshima, drink shochu. The drink has a long history and has been loved in Kagoshima for some 500 years. On the mainland, it is usually mainly made from potatoes, and on the remote islands, from brown sugar. With no added sugar, shochu is a very healthy drink. Take it on the rocks, mixed with cool or hot water, or however you please.





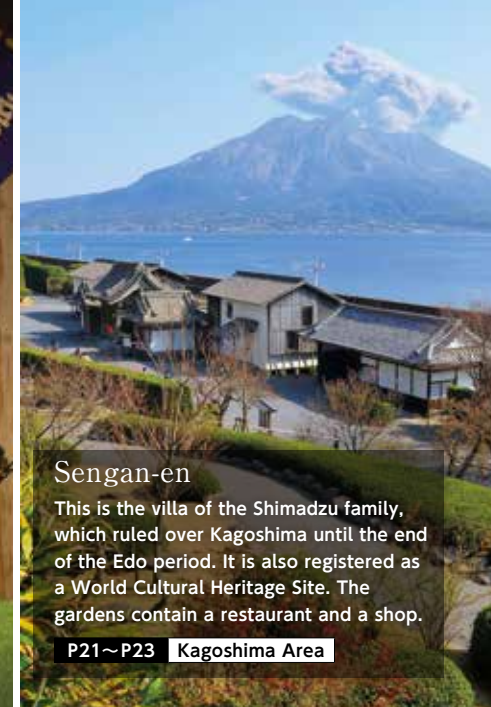
**Caving in Okinoerabujima**  
An extraordinary caving experience. Rest assured: we also have courses for beginners.

**P27~P28 Amami Area**



**Marutake Japanese Traditional Armor and Arms**  
Proficient craftsmen make traditional armor and helmets from the actual designs of items worn by warriors in battle.

**P17~P18 Hokusatsu Area**



**Sengan-en**

This is the villa of the Shimadzu family, which ruled over Kagoshima until the end of the Edo period. It is also registered as a World Cultural Heritage Site. The gardens contain a restaurant and a shop.

**P21~P23 Kagoshima Area**

# Sports

Refresh your mind while playing sports and enjoying the nature of a warm climate to the fullest!



**Golf Course**

Enjoy golf to your heart's content in a warm tropical climate against a great natural backdrop.



Kagoshima Prefecture Website

# History & Shopping

Kagoshima, pioneer of Japan's modernization. Visitors can also enjoy shopping while taking a historical stroll.



**Bronze Statues of Saigo Takamori and Okubo Toshimichi**

Saigo Takamori and Okubo Toshimichi were two of the heroes of the Meiji Restoration. Visitors can also enjoy shopping in the vicinity of the statues. Near the statue of Saigo Takamori is Tenmonkan, the biggest shopping area in Minamikyushi, and near the statue of Okubo Toshimichi is Kagoshima-Chuo Station.

**P21~P23 Kagoshima Area**



**Izumi-Fumoto Samurai Residences**

Visitors can step back in time for a historical stroll in a traditional town area where a 400 year-old atmosphere remains intact.

**P17~P18 Hokusatsu Area**



# Kirishima/Hokusatsu

An area offering plenty to see and do, from the seasonal nature of the Kirishima Mountain Range to relaxing hot springs and a shrine dedicated to the protagonist of Japan's creation mythology.

See page 30 for details on how to get here from Kagoshima Airport



## Kirishima Mountain Range

The first area in Japan to be designated as a national park. Visitors can enjoy beautiful natural scenery throughout the year, including Kyushu Azalea (the flowers that appear in the photo) in spring, fresh verdure in summer, colored leaves in autumn, and soft rime in winter.



## Onami Pond

Relatively easy to climb, you'll find a crater lake with a shoreline of 1.9 km at the summit. The beauty of the nature reflected on the lake's surface is a sight to behold.

## Kirishima Jingu Shrine

In 2022, the main shrine, offering hall, and worship hall became the first buildings in Kagoshima Prefecture to be designated National Treasures. The buildings are highly valued for their colorful decorations, including paintings on the structures.



## Kirishima Hot Spring Village

The high-quality water is popular among hot spring fanatics, and visitors can enjoy a variety of unique hot springs.

Kirishima/Hokusatsu

## Suggest Course

### SPOT 1 Kirishima Open-Air Museum



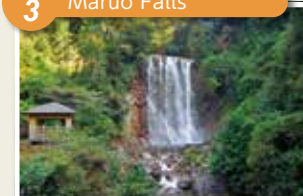
Exhibits works by highly original artists. Many works are displayed outdoors.

### SPOT 2 Kirishima Hot Springs Market



A facility in the center of Kirishima Hot Spring Village, with a tourist information center, souvenir shops, and a footbath.

### SPOT 3 Maruo Falls



Unique to Kirishima, the water of Maruo falls comes from a hot spring.

### SPOT 4 Kirishima Hot Spring Village



Offering wonderful views, the large communal baths are popular, along with the open-air baths where visitors can take a leisurely soak in the serenity of nature.





# Ibusuki/Nansatsu

Mt. Kaimon-dake's beautiful ridge line is a must-see. An area brimming with tropical southern charm offering rare experiences such as sand baths and flowing somen noodle dining.

See page 30 for details on how to get here from Kagoshima Airport



## Mt. Kaimon-dake [Ibusuki]

The symbol of Ibusuki, Mt. Kaimon-dake is also known as "Satsuma Fuji" for its resemblance to Japan's tallest mountain, Mt. Fuji.



## Chiringashima [Ibusuki]

A mysterious uninhabited island. An 800m-long sandbar appears at low water during spring tides and half tides from March to October, allowing visitors to walk across to the island.

## Lake Ikeda [Ibusuki]

A caldera lake with a shoreline of 15 km, formed by volcanic activity many centuries ago. Legend has it that the lake is home to a mysterious creature called Issy.



## Chiran Samurai Residence Complex [Minamikyushu]

A place that gives you the feeling of having stepped back in time to the Edo period. The seven gardens that were built here in the mid-Edo period have been designated as national places of scenic beauty.

Ibusuki/Nansatsu

## Suggest Course

### SPOT 1 Kamafuta Jinja Shrine [Minamikyushu]



According to the legend of this shrine, if you can balance the lid of a cooking pot on your head and make it from the torii gate to the prayer hall without the lid falling off, your wish will come true.

### SPOT 2 Yamakawa Natural Steam Sand Bath "Sayuri"



Currently closed

Get buried in sand while lying on a beach where natural hot spring water wells up from beneath.

### SPOT 3 Tosenkyo Somen Nagashi



Enjoy a unique dining style that involves using chopsticks to grab somen noodles that flow around in rotating water.

### SPOT 4 Flower Park Kagoshima



One of Japan's largest floral theme parks, where visitors can enjoy flowers and trees from around the world.





# Kagoshima City & Sakurajima

An area packed with attractive travel options, including one of the few active volcanoes in the world, Sakurajima, as well as history, gourmet cuisine, and shopping.

See page 30 for details on how to get here from Kagoshima Airport



## Sakurajima

An active volcano only 4 km or so away from Kagoshima City. Mini cruises offering the best of Sakurajima and Kinko Bay are another popular option.



## Sengan-en

A villa built in 1658 by the lord of Satsuma Domain. The exquisite view of Sakurajima is also popular.



## Jambo Mochi

A bite-sized Kagoshima dessert consisting of rice cakes doused in sweet sauce. You can also eat them while in the Sengan-en.

## Tenmonkan Shopping District

Kagoshima's foremost shopping district. Dine and shop to your heart's content.





### Kagoshima Furusato Yataimura

Enjoy Kagoshima's seasonal ingredients and local cuisine from 18 unique stalls.



### Kagoshima City Aquarium

An aquarium where you can meet a whale shark. Around 30,000 creatures and 500 species are on display.



### Sakurajima Yogan Nagisa Park & Footbath

One of the largest footbaths in Japan, spanning a length of 100 meters. See Sakurajima up close as you relax and unwind.



### Sakurajima Visitor Center

A volcano museum with videos and displays providing detailed introductions to Sakurajima's eruption history and formation.

Kagoshima City & Sakurajima

## Suggest Course

### SPOT 1 Yunohira Observatory



Enjoy views of Kagoshima City and the spectacular Sakurajima up close

### SPOT 2 Ishin Furusato no Michi Promenade



A place where you can learn about history while taking a stroll along the Kotsuki River.

### SPOT 3 Amu Plaza Kagoshima, Kagoshima-Chuo Station



The place to go for shopping. The view from the Ferris wheel is also recommended.

### SPOT 4 Kurobuta Pork Cutlets



Deliciously crispy on the outside, packed with meaty flavor on the inside.



# Osumi

Take a drive down the coast and head for Cape Sata-misaki, the southernmost tip of the mainland. An area with a variety of natural charms.

See page 30 for details on how to get here from Kagoshima Airport

### Ogawa Falls [Minamiosumi]

Experience the breathtaking beauty of a waterfall with emerald green water, just like the sea. The view of the waterfall basin and unique scenery from the observation deck will heal your soul.

### Kanoya Rose Garden [Kanoya]



One of the largest rose gardens in Japan by area, with 35,000 roses. A garden to gaze upon while taking a leisurely stroll.

### Sembon Ginkgo Garden [Tarumizu]



The view of more than 1,200 ginkgo trees turning gold is like a scene from a movie.

### Cape Sata [Minamiosumi]



A cape at the southernmost tip of the mainland, which sits on the 31 degrees north parallel. On a clear day, you can catch a view of Tanegashima and Yakushima islands.





# Tanegashima/Yakushima

Tanegashima, the Japanese island closest to space. Yakushima, a World Heritage island full of mystical forests. An area you simply have to visit.



See page 30 for details on how to get here from Kagoshima Airport

## Shiratani Unsui-kyo Gorge [Yakushima]

This deep forest, covered in some 600 species of moss, was the inspiration for the film Princess Mononoke. Half a day there and back, Yakushima is also recommended for amateur trekkers.



## Tanegashima Space Center [Tanegashima]

Surrounded by blue sea and white sand, Tanegashima is said to be the most beautiful rocket launch site in the world. At the Science and Technology Museum, visitors can enjoy various displays related to rockets and space.



## Urata Beach [Tanegashima]

On this beautiful white sandy beach, you can enjoy swimming in the sea, as well as fishing and scuba diving.



## Sea Turtle Egg-Laying [Yakushima]

Nagata-inakahama is a rare beach where sea turtles crawl up to the beach to nest and hatch. The peak of the egg-laying season is from June to mid-July.

## Suggest Course

### SPOT 1 Chikura-no-Iwaya Cave [Tanegashima]



A sea cave created by raging waves. It was named Chikura-no-Iwaya ("cave of 1,000 seats") for its gigantic size.

### SPOT 2 Ingi Chicken [Tanegashima]



A Tanegashima gourmet delight. Savor the soft and springy texture of the meat.

### SPOT 3 Yakusugi Museum [Yakushima]



A museum dedicated to the forests of Yakushima. Visitors can learn about nature through dioramas and computer graphics.

### SPOT 4 Yakusugi Land [Yakushima]



The gigantic 270.33 ha forest has four hiking courses, where visitors can see giant cedar trees that have stood for several thousand years.





# Amami Area

An area offering an abundance of undisturbed nature, from emerald green seas to primeval forests thick with subtropical plants. In 2021, Amami-Oshima island and Tokunoshima island were registered as World Natural Heritage sites.



See page 30 for details on how to get here from Kagoshima Airport

## Tokuhama Beach [Setouchi]

A beautiful beach that welcomes nesting sea turtles. You can also see a famous rock in the shape of a lion's face.



## Togyu Bullfighting [Tokunoshima]

A bull wrestling extravaganza in which pairs of cattle lock horns. As the matches heat up, so does the atmosphere of the crowd. The victory dances are also fun to watch.



## Heart Rock [Tatsugo]

A tide pool that appears on the white beach at low tide. Forming the shape of a heart, the pool is popular among couples and young travelers.



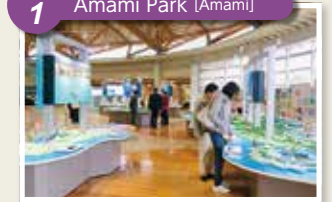
## Kinsakubaru [Amami]

A forest home to rare creatures, including subtropical plants such as the huge flying spider-monkey tree fern, which is known as a "living fossil." Here you can feel the awesome power of nature.

Amami-Oshima

## Suggest Course

### SPOT 1 Amami Park [Amami]



The nature, history, and culture of Amami are introduced in a simple way.

### SPOT 2 Keihan Chicken Rice



Classic Amami gourmet dish. The rich chicken broth is delicious.

### SPOT 3 Oshima Tsumugimura [Tatsugo]



Watch how Oshima Tsumugi, the traditional Amami-Oshima kimono, is woven from start to finish.

### SPOT 4 Snorkeling



With the right timing, you might even come across a sea turtle!



Amami Town



Isen Town



Wadamari Town



Yoron Town





# Rent-A-Car Drive Manual

## PLEASE BE CAREFUL AND OBEY TRAFFIC RULES WHEN DRIVING IN JAPAN

An increasing number of overseas tourists are getting into trouble or accidents when driving on Japan's roads. Always remember that Japan drives on the left side of the road, and to obey stop signs and traffic lights. This guide introduces some major rules that will help you avoid getting into an accident.

### 1 Stop when traffic lights are red

Proceed when lights are green. Stop when lights are yellow or red.



In the case of traffic lights with a green arrow, proceed in the direction of the arrow when it lights up while paying attention to oncoming vehicles.

### 2 Stop when you see this sign

Stop when you see the below sign at an intersection, and check all directions before proceeding.



You should check all directions before entering intersections, even without this sign

### 3 Driver's Seat Is on The Right

Japanese roads are left-sided way just like the British system, and driver's side is on the right hand side. This can be confusing for many overseas drivers at the beginning.



### 4 Wear A Seat Belt While Driving

According to the Japanese law for motor transportation, seat belt use is required not only for the driver's seat but also other front and back passenger seats.



Kagoshima Prefecture Website

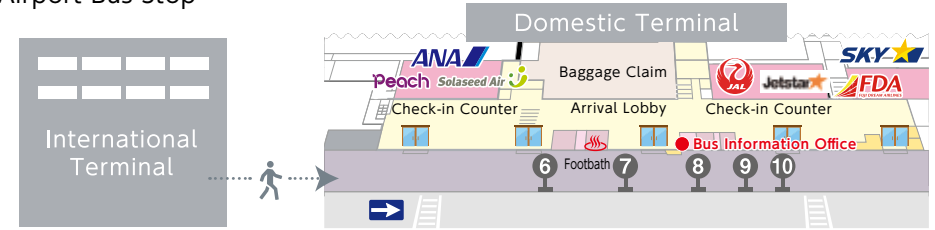
Contact the police and your car rental company's accident assistance hotline immediately if you are involved in an accident.

You have taken out Collision Damage Waiver (CDW) coverage, right? These schemes pay out compensation for deductibles when you are involved in an accident. However, if you fail to notify the police or your car rental company, you may not be covered by your insurance and will have to pay the repair costs. In addition, if you damage the car body or dirty the car's interior, you may be charged a Non-Operation Charge (NOC) as a part of compensation that is not covered by your insurance. Coverage varies by insurance policy, so make sure to double check the coverage content of your policy.



# Airport Bus

## ■ Airport Bus Stop



- ⑥ Kajiki, Aira, Kaseda, Makurazaki, Fukuoka
- ⑦ Taniyama, Ibusuki, Yamagawa, Hitoyoshi, Yatsushiro, Kumamoto
- ⑧ Kagoshima City (Chuo Station, Tenmonkan, Jet foil terminal, Yoshino)
- ⑨ Kurino, Okuchi, Minamata, Kirishima Onsenkyo, Miyanojo, Izumi, Akune, Kamou, Sendai
- ⑩ Kanoya, Tarumizu, Iwagawa, Shibushi, Kokubu, Kyocera Kokubu, Myoken Onsen, Hayato

\* Please purchase a ticket at the ticket machine located at the Bus Information Office before boarding a bus.

Destination	No.	Main Bus Stops	Last Stop		Contact
			Duration	Fare	
Kagoshima City	⑥	Shiyakusho-mae (Nonstop Service)	Kagoshima-Chuo Station (Nangoku Kotsu Bus Terminal), Tenmonkan	40 min	JPY 1,400 (Adults), JPY 700 (Elementary and younger) (A)·(B)
	⑥	High-speed Boat Terminal (Non-stop service)			
	⑥	Kagoshima-Chuo Station (Nangoku Kotsu Bus Terminal) or Kamoike Port (via Yoshino)	Kagoshima-Chuo Station	55 min	
Kirishima & Hokuzetsu Area	⑥	Kajiki, Aira	Kajiki Station, Chosa, AEON TOWN Aira	32 min	JPY 460 (A)
	⑨	Kirishima	Kareigawa, Maruo, Kirishima Iwasaki Hotel	42 min	JPY 830 (B)
	⑨	Sendai	Imuta Onsen, Sendai Station, Kyocera Sendai	80 min	JPY 1,600 (A)
	⑨	Akune	Miyanojo, Izumi Station Bus Center	120 min	JPY 2,000 (A)
	⑨	Kurino, Okuchi	Hishikari Town Hall, Okuchi Bus Center	70 min	JPY 1,050 (A)
Ibusuki & Watarashi Area	⑦	Ibusuki, Yamagawa	Hirakawa, Taniyama, Wholesale Honmachi Chuo, Ibusuki Station, Yamagawa-Sanbashi	130 min	JPY 2,700 (B)
	⑥	Kaseda, Makurazaki	Izaku, Kaseda, Makurazaki	105 min	JPY 2,500 (B)
Osumi Area	⑩	Kanoya	Hotel Kyocera, Kirishima City Hall, Makinohara, Kanoya, Higashi-Kasanohara	120 min	JPY 2,300 (B)
	⑩	Kanoya (via Highway)	Michi-no-Eki Arasano, Asahibaru, Kanoya, Higashi-Kasanohara	105 min	JPY 2,450 (B)
	⑩	Tarumizu	Kokubu Station, Sakurajima-guchi, Tarumizu Port	88 min	JPY 1,480 (B)
	⑩	Kokubu	Kokubu Station, Kyocera Kokubu	30 min	JPY 560 (B)
	⑩	Shibushi	Kirishima City Hall, Makinohara, Iwagawa	107 min	JPY 1,900 (B)
Amami Airport → Amami suburbs		Amami Park, Oshima Tsumugimura, West Court, Shima Bus Honsha Mae	Shima Bus Honsha Mae	55 mins.	JPY 1,100 (Adults), JPY 550 (Elementary and younger) (C)

### [Contact]

- ① Nangoku Kotsu 0995-58-2341
- ② Kagoshima Kotsu 099-254-8970
- ③ Shima Bus Co., Ltd. 0997-52-0509

The bus schedules can be looked up on the following websites. Please feel free to use them.

- Kotsu Navi Kagoshima <http://kotsu-navi.pref.kagoshima.jp/en/kotsu/>
- Kyushu Bus Timetable <http://qbus.jp/time/>



# Kagoshima City Tram [Route Map]

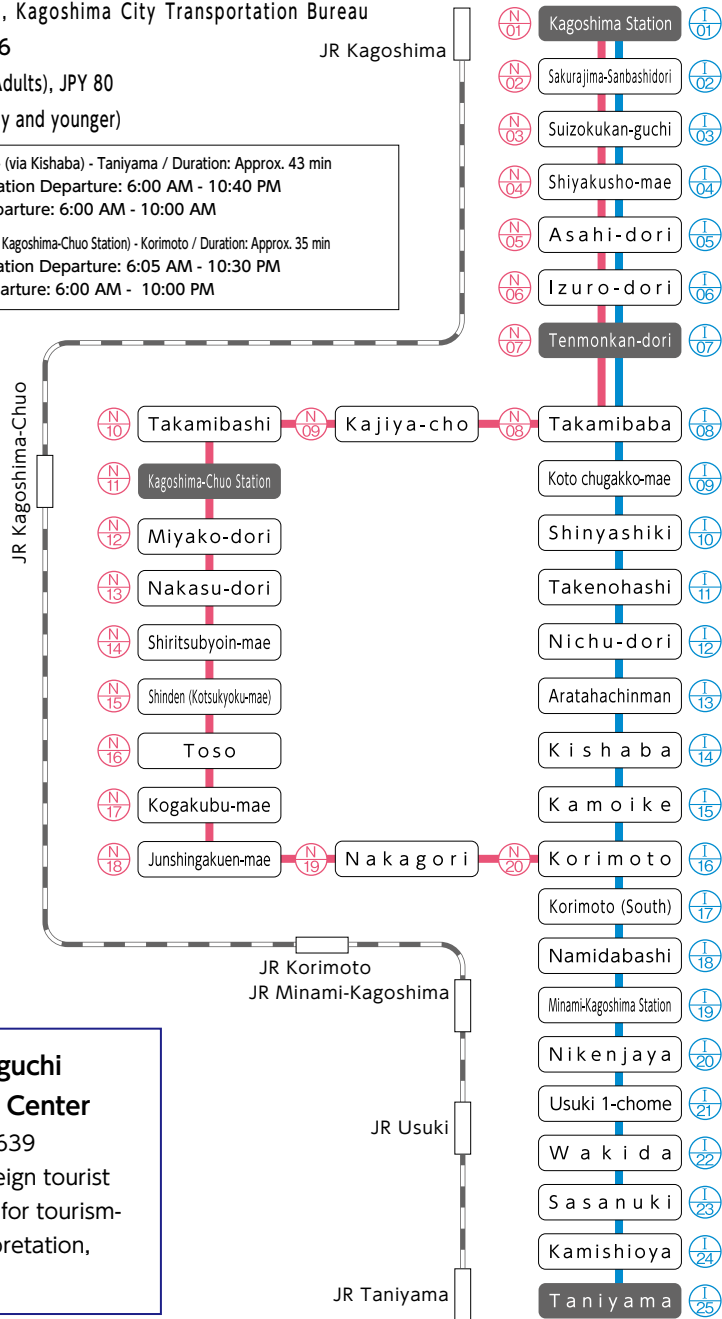
- Contact : Operations Section, Kagoshima City Transportation Bureau  
☎099-257-2116
- Fees (All Sections) : JPY 170 (Adults), JPY 80 (Elementary and younger)



NexTram KIRIKO



Cafe Tram



**Kyushu/Yamaguchi Multilingual Call Center**  
 Telephone: 092-687-6639  
 A 24-hour 365-day foreign tourist service. It can be used for tourism-related inquiries, interpretation, etc.

For when you want to have fun sightseeing in Sakurajima!

## CUTE

Comes with discount pass for tourist facilities among other things to save money!



● Contact  
 Kagoshima Convention & Visitors Bureau  
 ☎099-286-4700

Can be used on the following transportation:

- Kagoshima City View ● Tram
- City Bus ● Sakurajima Ferry
- Sakurajima Island View

Fees:

1-Day Pass: JPY 1,200 (Adults), JPY 600 (Kids)  
2-Day Pass: JPY 1,800 (Adults), JPY 900 (Kids)

Available at:

Kagoshima-Chuo Station Tourist Information Center, Sakurajima Tourist Information Center, Tourism Exchange Center, Kagoshima City Tourist Information Center, Kagoshima Port Ticket Office, Sakurajima Port, Transportation Bureau Ticket Sales Office, etc.

Caution:

- \* Not valid for private ferry services.
- \* Not valid for machi-meguri buses, regular sightseeing buses, and private bus services.



# Regular Sightseeing Buses

Area	Plan	Course	Contact
Kagoshima City	Kagoshima City Sightseeing Bus (Kagoshima City View)	Sightseeing Course	Kagoshima City Transportation Bureau ☎099-257-2117
Kagoshima City	Kagoshima City Sightseeing Bus (Kagoshima City View)	Night View Course (Available only on Saturdays)	Kagoshima City Transportation Bureau ☎099-257-2117
Kagoshima City	Machi-meguri Bus: Kagoshima City Touring Bus (Acchan and Segodon)		Kagoshima Kotsu ☎099-247-2334
Sakurajima	Kagoshima City, Sakurajima Port, Yunohira Observatory Round Trip Bus (Sakurajima Aira View)	Sakurajima Island View	Kagoshima City Transportation Bureau ☎099-257-2117
Kagoshima City / Sakurajima	Kagonma Sora Bus - Reservation required	Kagoshima City / Sakurajima	Kagoshima Sky Travel ☎099-208-3003
Kirishima City, Ebino City	Kirishima "Nottari Oritari My Plan"		Kagoshima Kotsu ☎0995-45-6733
Ibusuki City	Ibusuki "Nottari Oritari My Plan"		Kagoshima Kotsu ☎0993-22-2211
Ibusuki City, Minamisatsuma City	Ibusuki, Kaimon, Chiran - Regular Sightseeing Bus	Ibusuki, Chiran Course	Kagoshima Kotsu Kanko Bus ☎099-247-6088
Minamiosumi Town	Tour Bus to Cape Sata-misaki, Japan's Southernmost Point, and Ogawa Falls		Futagawa Kotsu ☎0994-24-2763
Yakushima	Yakushima Sightseeing Bus "Yuran Bus"		Tanegashima Yakushima Kotsu ☎0997-46-2221
Yakushima	Yakushima Bus Pass (limited route)		Tanegashima Yakushima Kotsu ☎0997-46-2221
Koshiki Islands	Koshiki Tour Canpak Bus	Koshiki Islands Tour	Satsumasendai Tourism Office ☎0996-25-1140



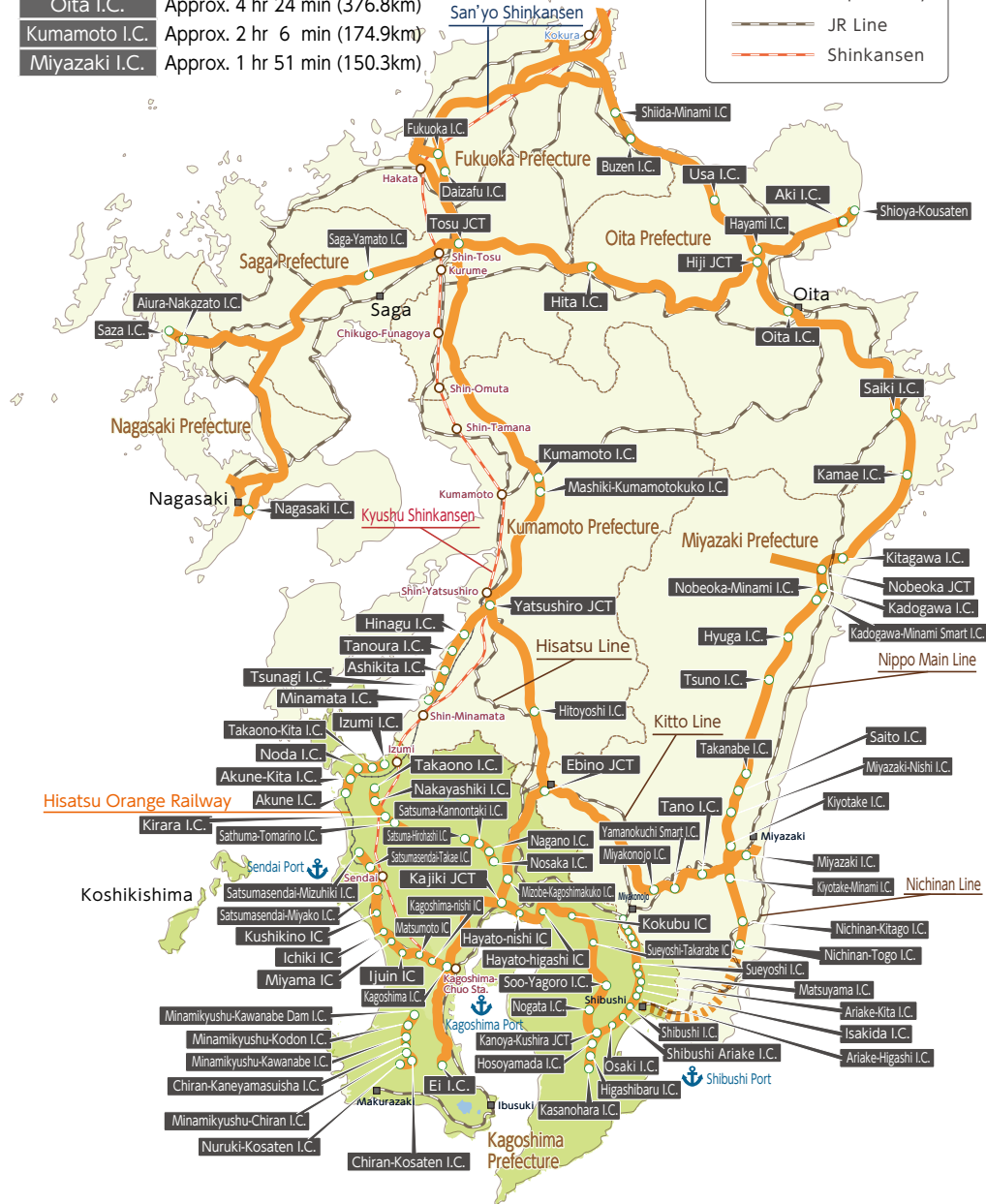
# Highways & Tolls

Estimated travel time and distance from Kyushu's major cities to Kagoshima I.C.

- Fukuoka I.C. Approx. 3 hr 9 min (277.8km)
- Saga-Yamato I.C. Approx. 3 hr 8 min (276.7km)
- Nagasaki I.C. Approx. 4 hr 9 min (370.3km)
- Oita I.C. Approx. 4 hr 24 min (376.8km)
- Kumamoto I.C. Approx. 2 hr 6 min (174.9km)
- Miyazaki I.C. Approx. 1 hr 51 min (150.3km)

Legend:

- Expressway (Orange line)
- JR Line (Grey line)
- Shinkansen (Red dashed line)



# Main Sea Routes

Area	Route	Ship Name	Contact
Kagoshima City	Kagoshima - Sakurajima	Sakurajima Ferry	Sales Section, Sakurajima Ferry ☎099-293-2525
	Kagoshima - Tarumizu	Kamoike, Tarumizu Ferry	Kagoshima Kotsu ☎099-256-1761
	Kagoshima, Tanegashima, Yakushima	Hibiscus	Iwasaki Sangyo ☎099-261-7000
	Kagoshima, Tanegashima, Yakushima (* some trips include Ibusuki)	High-speed Boat Toppo & Rocket	Tane Yaku Jetfoil ☎0570-004015
	Kagoshima, Tanegashima	Princess Wakasa	COSMO LINE (Reservations) Kyusho Port Service ☎099-226-6628 ☎099-222-8271
	Kagoshima, Yakushima	Ferry Yakushima 2	Orita Kisen ☎099-226-0731
	Kagoshima, Amami-Oshima, Tokunoshima, Okinoerabujima, Yoronjima, Okinawa	Queen Coral Pluse, Queen Coral Cross	Marix Line ☎099-225-1551
		Ferry Naminoue, Ferry Akebono	Marue Ferry ☎099-226-4141
		Ferry Kikai, Ferry Amami	Amami Kaiun ☎099-222-2338
	Ibusuki City	Yamagawa, Nejime	Ferry Nankyu
Ichiki-Kushikino City	Ichiki-Kushikino, Koshikishima	Ferry New Koshiki	Koshikijima Shosen ☎0996-32-6458
Satsuma-Sendai City	Sendai, Koshikishima	High-speed Boat Koshikishima	Sendai Sales Office, Koshikijima Shosen ☎0996-41-5100
Nagashima Town	Nagashima, Amakusa (Kumamoto)	Tencho Maru No. 2	Sanwa Shosen ☎0996-88-5689
	Nagashima, Shishijima, Amakusa (Kumamoto)	ROSARY CALM	Tencho Ferry ☎0996-86-0775
Shishijima	Shishijima, Minamata (Kumamoto)	Shishijima	Shishijima Line ☎090-5744-5622
O s a k a	Osaka, Shibushi	Sunflower Satsuma, Sunflower Kirishima	Ferry Sunflower ☎0120-56-3268



# Aviation

Airline company	Contact	Destination
A N A All Nippon Airways	Domestic ☎0570-029-222 International ☎0570-029-333	Tokyo, Nagoya, Osaka, Okinawa, Amami-Oshima, Okinoerabujima, Tanegashima, Yakushima, Kikaijima, Tokunoshima, Yoronjima
J A L Japan Airlines	Domestic ☎0570-025-071 International ☎0570-025-103	Tokyo, Shizuoka, Osaka, Matsuyama, Fukuoka, Tanegashima, Yakushima, Amami-Oshima, Tokunoshima, Okinoerabujima, Kikaijima, Yoronjima, Seoul, Shanghai, Taipei
J A C Japan Air Commuter	Domestic ☎0570-025-071 International ☎0570-025-103	Yoronjima - Okinawa
R A C Ryukyu Air Commuter	☎0570-025-071	Yoronjima - Okinawa
S K Y Skymark Airlines	☎0570-039-283	Tokyo, Nagoya, Kobe, Amami-Oshima
S N A Solaseed Air	☎0570-037-283	Tokyo, Nagoya, Okinawa
J J P Jetstar Japan	☎0570-550-538	Tokyo
F D A Fuji Dream Airlines	☎0570-55-0489	Shizuoka
A P J Peach Aviation	☎0570-001-292	Osaka, Tokyo - Amami-Oshima, Osaka - Amami-Oshima
I B X IBEX Airlines	☎092-771-4650	Osaka
K E Korean Air	☎0570-05-2001	Seoul
M U China Eastern Airlines	☎099-219-8888	Shanghai
C I China Airlines	☎0995-57-9898	Taipei
H X Hong Kong Airlines	https://www.hongkongairlines.com/	Hong Kong
U O Hong Kong Express Airways	https://www.hkexpress.com/jp	Hong Kong
Z E Eastar Jet	https://www.eastarjet.com/	Seoul

\*Some international lines may be currently not operating



Large Bathing Facilities



Outdoor Hot Pool



Guest Rooms

- \*With the hotel situated in the Kirishima Mountains, all 157 guest rooms have a view of Sakurajima.
- \*The rooms are spacious and offer the option of in-room dining for the evening meal.
- \*The hot pool bathing facility is brimming with pure sulfur-rich water. The outdoor bathing area is surrounded by greenery and can be used at night as well.
- \*Prices start at JPY 9,000 excluding tax for a one-night stay with two meals.
- \*30-minute drive from Kagoshima airport.



## Hotel Kirishima Castle

3878-49 Takachiho, Makizono-cho, Kirishima-shi, Kagoshima-ken  
 TEL +81995-78-2211 FAX +81995-78-3732  
 URL <http://www.castle.gr.jp> E-mail [info@castle.gr.jp](mailto:info@castle.gr.jp)



Straight-from-the-source hot spring



Special kaiseki-style cuisine



Oceanfront



Exterior view of the hotel



Established in 1848 TANEGASHIMA ARAKI HOTEL

78 Nishi-machi, Nishino-omote-shi,  
 Kagoshima-ken 891-3111  
 T E L +81997-22-1555  
 F A X +81997-22-0019  
 U R L <https://araki-hotel.co.jp>  
 Email [info@araki-hotel.co.jp](mailto:info@araki-hotel.co.jp)



Exterior view of Tanegashima Onsen

## Kedouin Resort

# Golf course and hotel in Kagoshima



Guest rooms



Tennis court



Outdoor hot pools



Kurobuta pork cuisine

## Kedouin Resort Co., Ltd.

3600 Shimode Kedoin-cho, Satsumasendai-shi,  
 Kagoshima-ken 895-1501

Tel: +81996-55-1133  
 Fax: +81996-55-0818  
 Url: <http://www.kedouin.com/>  
 Email: [info@kedouin.com](mailto:info@kedouin.com)

## Koji-no-Sato Gen

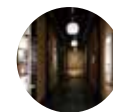


100-year history supplying koji

Originating from Kagoshima's brewing culture, shochu and koji



Koji cuisine



Koji tours



Koji desserts



Kirishima Heights Beer



Kagoshima culture is shochu culture.  
 We manufacture and sell koji, the source product for this kind of shochu.  
 This is the only koji store in Japan where you can take a tour inside!  
 We also make Japanese fermented products as well as European fermented products and beers.  
 Visit our website for details.

## Koji no Sato Gen

TEL: +81995-58-2535  
 FAL: +81995-58-3621  
[gen@praha-gen.com](mailto:gen@praha-gen.com)  
<http://praha-gen.com/>  
 876-15 Fumoto, Mizobe-ch,  
 Kirishima-shi, Kagoshima-ken



Black rice vinegar that combines the nature of Fukuyama-cho, Kagoshima, with a traditional art form dating back to the Edo Period.



The place to see, sense, and taste Sakamoto black rice vinegar



Sakamoto Black Rice Vinegar "Tsubobatake"

Information Center and Restaurant

"Tsubobatake" Black Rice Vinegar Information Center phone +81995-54-7200 9:00~17:00  
 "Tsubobatake" Black Rice Vinegar Restaurant phone +81995-54-7700 10:00~16:00 (Last order)

[www.tsubobatake.jp](http://www.tsubobatake.jp)  
 3075 Fukuyama, Fukuyama-cho, Kirishima-shi, Kagoshima-ken  
 ●50 min drive from Kagoshima City ●30 min drive from Kagoshima Airport



frost-covered trees



Luxury top floor guest room with outdoor bath



Seasonal cuisine for your dining pleasure including the famous Kagoshima shabu-shabu, kurobuta pork, fish, and seafood.



A large, comfortable bathing facility overlooking Kinko Bay and Osumi Peninsula.



Sand bathing has medically-proven beauty and health benefits.

Spend time relaxing in comfort to the soothing sound of the sea breeze.

**IBUSUKI SEASIDE HOTEL**

1912 Juccho, Ibusuki-shi, Kagoshima-ken 891-0402  
TEL: +81993-23-3111 FAX: +81993-22-4231  
<http://www.ibusuki-seaside.co.jp/>

The magnificent Sakurajima Island stands waiting outside your window



Lobby



Panoramic spa on the top floor



Guest room (twin)



Kurobuta pork shabu-shabu

**Kagoshima Sun Royal Hotel**

1-8-10 Yojiro, Kagoshima-shi, Kagoshima-ken 890-8581  
<http://www.sunroyal.co.jp> E-mail: [i\\_yoyaku@sunroyal.co.jp](mailto:i_yoyaku@sunroyal.co.jp) [Booking Center] Tel: +8199-253-2024

Easy access to Kagoshima Chuo Station and Tenmonkan  
**Shuttle Bus Service!!**

**Facing Sakurajima, this is Kyushu's largest aquarium**

Whale shark, the world's largest fish

Exhibiting 30,000 animals from 500 species



(Kurosio Great Water Tank)



Dolphins in the sea at the front of the aquarium



Action packed



Free admission area

[Business Hours] 9:30 AM - 6:00 PM

(Last admission: 5:00 PM)

[Holidays] Four days starting on the first Monday of December

**IOWORLD Kagoshima Aquarium**

3-1 Honkoshinmachi, Kagoshima-shi 892-0814

TEL: +8199-226-2233 FAX: +8199-223-7692

[website] <http://iowordl.jp>

Type	Individual	Group (20 or more)
Adult (senior high school and above)	JPY 1,500	JPY 1,200
Child (elementary and junior high school)	JPY 750	JPY 600
Infant (four years or younger)	JPY 350	JPY 280

Hot Springs, Cuisine and sensations brimming with historical charm.

The building is nestled along the picturesque ocean and environment of pine trees. The Japanese aesthetics brimming with sense and elegance. Hakuikuian's hospitality will let you unwind and escape the big city.

**Sand bath**

The unique sand bath you can experience in here has health and beauty benefits.



**Genroku bath area**

Experience the historical of Hakuikuian's hot spring



Have you ever wanted to be a Master of Shochu?  
**Shochu Dojo**



**Stone sauna**

Offers much more than a regular health sauna

At the southernmost tip of the Japan Sand bath

**Ibusuki Hakuikuian**

Tokyo Office ☎ +813-3723-5541

Osaka Office ☎ +816-6245-3545

Chirin no Sato, Ibusuki city, Kagoshima prefecture 891-0404 Japan

☎ +81993-22-3131  
FAX: +81993-23-3860

HP: <http://www.hakuikuian.co.jp>

Mail: [info@hakuikuian.co.jp](mailto:info@hakuikuian.co.jp)

Fukuoka Office ☎ +8192-771-2928

Kagoshima Office ☎ +8199-226-4171

# Bounty from the hills

Carefully-selected kurobuta pork dishes presented with the spirit of hospitality



The food heritage of Kagoshima Prefecture

# Bounty from the seas

We offer some of the most famous local Kagoshima fish



J-F Group  Search

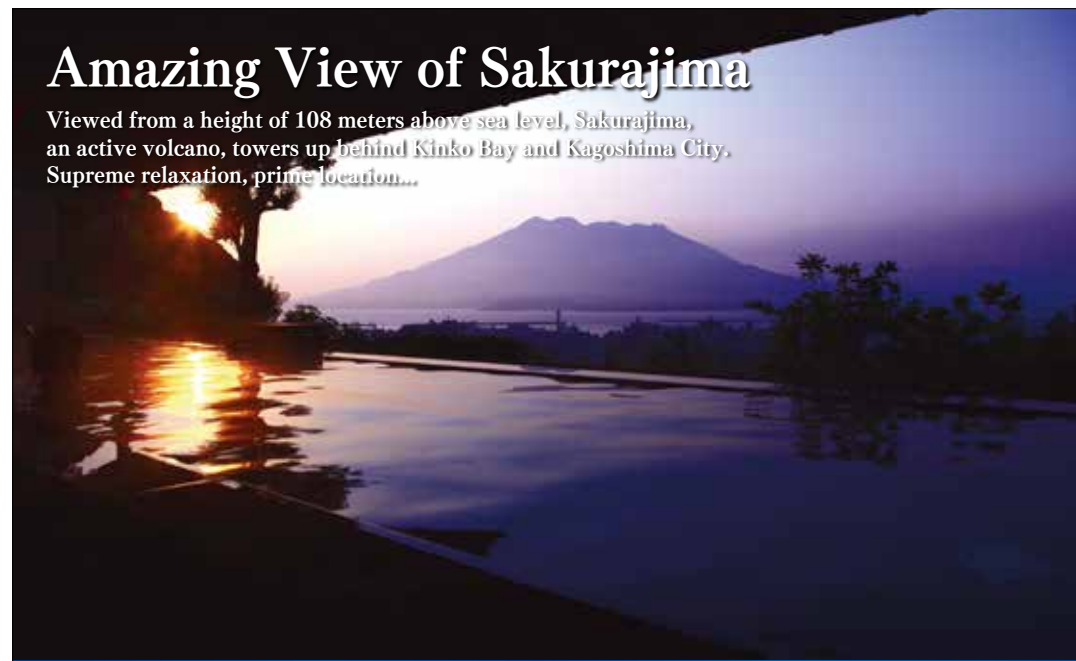
<http://www.jf-group.co.jp/>

TEL : +8199-253-3016

FAX : +8199-254-0753

# Amazing View of Sakurajima

Viewed from a height of 108 meters above sea level, Sakurajima, an active volcano, towers up behind Kinko Bay and Kagoshima City. Supreme relaxation, prime location...



"Satsuma-no-Yu" Open-Air Hot Spring

A place where happiness grows.



The Cellar N Baron Nagasawa



"Teppanyaki Kusunoki", serving Japan's Finest Beef Kagoshima Black Cattle



The design incorporates "Oshima Tsumugi," a traditional fabric culture of Kagoshima. Superior Sakurajima View Twin Room



Hotel Exterior



Shiroyama Brewery



Spa



SHIROYAMA HOTEL  
kagoshima

[Official Website] <https://www.shiroyama-g.co.jp> 41-1 Shinshoin-cho, Kagoshima-shi, Kagoshima-ken 890-8586  
TEL: +8199-224-2211 (Trunkline) FAX: +8199-224-2222 Reservation Center (Direct Line): +8199-224-2200

A seaside resort that can be enjoyed by three generations of visitors



### PGA CHAMPIONSHIP 2019

PGA Championship Course



**Ibusuki Iwasaki Hotel**

**Ibusuki Golf Club**

Resort course on a southern island

Wonderful starry skies, pure white sands, and an adult friendly resort on the oceanfront



**Tanegashima Golf Resort**

**Tanegashima Iwasaki Hotel**

Yakushima Island, a Natural World Heritage Site  
Enjoy a relaxing stay in a beautiful natural environment

**Yakushima Iwasaki Hotel**

Easy access using the Toppo & Rocket high-speed boat



We can also arrange transportation, including charter buses.



**Iwasaki Group**

[www.iwasakihotels.com](http://www.iwasakihotels.com)

Iwasaki Group, Overseas Sales Division

+8199-239-8666

info@iwasakihotels.com

## Dream a dream in milky white



Sakurajima

In the southern latitudes of Kagoshima, the Sakurajima snowscape is a rare sight. The otherwise mighty mountain figure takes on a different kind of beauty.