



All Season Resort

APPII

IHG InterContinental Appikogen Resort

Tohoku Indulgence



❄️ How to get to APPI



APPI

JR EAST JAPAN RAILWAY COMPANY
JR EAST

JR EAST PASS

Flexible five-day pass
(any five days within 14 days of issuance,
including the day of issuance)

- JR East Lines (including Shinkansen)
- Tokyo Monorail
- Narita Express

■ Prices

- Adults (12 and older) 20,000 yen
- Children (6 to 11) 10,000 yen

■ Sales Locations and Exchange

- Haneda Airport International Terminal
- Narita Airport Terminal 1・2・3
- Tokyo Station
- Morioka Station and many other JR East stations.



Tohoku Shinkansen



JR Hanawa Line



**200min from TOKYO to APPI
by Bullet Train & Bus or Local Train!**

SPRING

SUMMER

AUTUMN



SPRING

Theme: SAKURA / Cherry Blossom

Please check the below tours info at:

www.appi.co.jp/foreign_country/english/green/index.html

Please check Rent Car Info at:

rent.toyota.co.jp/en/index.html

* Model 1 *

* Model 2 *

* Model 3 *

APPI

1.5h

Hachimantai Aspite Line



We strongly recommend the corridor of snow. The snow walls, which can reach a height of 6 m in some places. (Opened on April)

2.5h

Kakunodate in Akita



There are 400 Sakura on the street of Samurai Houses. You can get river by 5 minutes walk from Samurai houses. There are over 10,000 beautiful Sakura. (Mid of Apr - End of Apr)

2.5h

APPI

APPI

2h

Hirosaki Castle in Aomori



Towards the end of April, about 2,600 Yoshino and double cherry blossom trees come to full bloom.

2h

Oirase Gorge in Aomori



There is very beautiful stream with fresh air. You can walk along the stream and enjoy and relax with natural scenery.

2.5h

APPI

APPI

40min

Wanbou Solitary Cherry Tree



Only one beautiful Sakura in the middle of pasture. The Sakura is blooming in early May against the backdrop of snow-covered Mt. Iwate.

1h

Koiwai Solitary Cherry Tree



The most famous and memorable view of Koiwai is the Solitary Cherry Tree, blooming in early May against the backdrop of snow-covered Mt. Iwate.

30min

Asabiraki (Brewing Sake)



Genzo Murai who was "Samurai" of Nanbu Clan established Asabiraki Sake Brewery in 1871 (Meiji Era). You can taste Sake in the Sake shop after visit brewery.

1h

APPI

SPRING

SUMMER

AUTUMN

SUMMER

Theme: MATSURI / Festival

■ Please check the below tours info at:

www.appi.co.jp/foreign_country/english/green/index.html

■ Please check Rent Car Info at:

rent.toyota.co.jp/en/index.html

* Model 1 *

* Model 2 *

* Model 3 *

APPI

3h

Hayachine Shrine



Hayachine Kagura is a type of Shinto theatrical dance for God. With a history of over 500 years, it is designated as a national important intangible folk cultural property; in 2009, it is also World Intangible Cultural Heritage.

2.5h

Morioka SANSA Odori Festival



Over 10,000 taiko drummers and dancers parade through the city; Sansa is listed in the Guinness Book of Records as the largest taiko drum festival in the world.

1h

APPI

APPI

2h

Hirosaki city in Aomori



Towards the end of April, about 2,600 Yoshino and double cherry blossom trees come to full bloom.

5-10min walk

NEPUTA Festival



Bamboo and wooden frames are covered with paper illustrated with historic figures and pictures of samurai warriors along with birds and beasts.

2h

APPI

APPI

1h

Morioka city



Hachimangu shrine, Hoonji Temple (500 Disciples of Buddha), Nansho Estate.

10 min walk

Asabiraki (Brewing Sake)



Genzo Murai who was "Samurai" of Nanbu Clan established Asabiraki Sake Brewery in 1871 (Meiji Era). You can taste Sake in the Sake shop after visiting brewery.

30min

Morioka Fire Works Festival



You can enjoy fireworks with over 10,000 shots and a drum performance held in early August.

1h

APPI

SPRING

SUMMER

AUTUMN

AUTUMN

Theme: KOUYOU / Autumn Foliage

Please check the below tours info at:

www.appi.co.jp/foreign_country/english/green/index.html

Please check Rent Car Info at:

rent.toyota.co.jp/en/index.html

* Model 1 *

* Model 2 *

* Model 3 *

APPI

1.5h

Hachimantai Aspite Line



Hachimantai Aspite Line is beautiful any time of the year; in particular, from late September to mid-October, the green summer leaves turn color, painting the mountain in various shades of red and yellow.

45min

Matsukawa Hot Springs



Located by Matsukawa Gorge, a history of 250 years. There are 3 inns; the water is milky white and keeps your body warm even after getting out of the bath. Enjoy the fall colors scenery from the outdoor baths.

45min

APPI

APPI

2.5h

Oirase in Aomori



In spring with tender green and autumn with colored foliage, the area is picturesque and attracts many tourists from around the nation and world.

1h

Hakkouda in Aomori



At Mt. Hakkoda, beautifully colored with the red and yellow leaves of maples and rowans. Sukayu hot springs are the oldest in Aomori, certified in 1954.

2.5h

APPI

APPI

2.5h

Kakunodate in Akita



Samurai Houses; The Samurai District takes on the brilliant colors of autumn. DAKIGAERI Ravin; Many people come for autumn foliage view from the hanging bridge.

2h

Nyuto Hot Springs in Akita



Tsurunoyu is the oldest place in Nyuto hot spring village and was a spa of Akita-han. The thatch mansion of the samurai "HONJIN" still exists.

2.5h

APPI

Original Halal Bento

Original Halal Bento (Lunch box) and will deliver it to the food court for Muslims who enjoy staying.



Free WI-Fi

Providing wi-fi service in hotels has become worlds standard. Unfortunately, this service is still not available in many hotels and Ryokan in Japan. However, complimentary wi-fi is available at all rooms in Hotel APPI Grand.



Free Renting

Securing a prayer spaces and prayer mats to our Muslim guests. At APPI resort, the hotel rent out vacant guest room to Muslim customers as prayer space. Since it is a guest room, you can perform wudu at shower room.



Private Spa MAKIBA

It can be used in a completely private. You can enjoy with your family or friends and private tranquility. APPI Resort offers private hot spring to our Muslim guests. With the private bath, you can fully enjoy Japan's hot spring

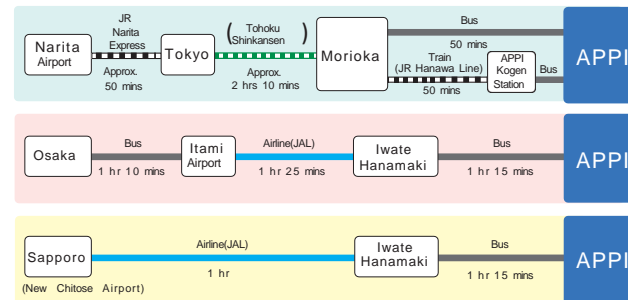
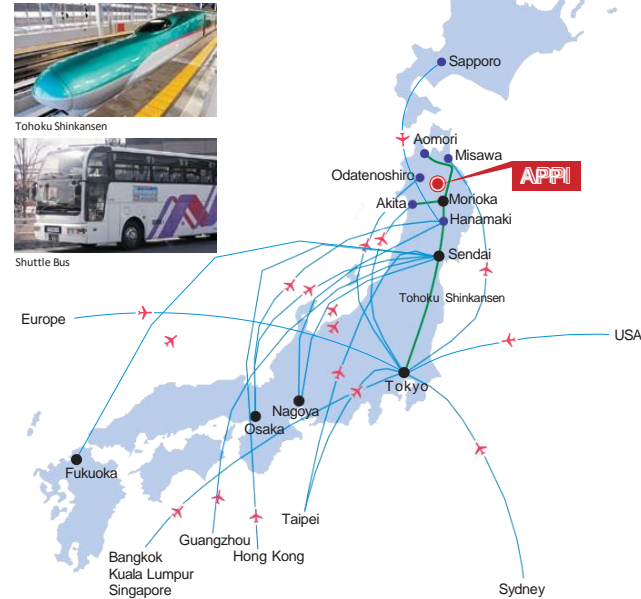


Location: Hotel APPI Grand 1F
Open: 10:00 ~ 22:00
Price: APPI Hotel Guests 2160 JPY
Visitor: 2700 JPY
Private Spa Rate: 50mins Capacity:
6ppl



Easy Access

For example, if you take a bullet train (Shinkansen), it takes about 2 hours and 10 minutes to Morioka Station, and it takes about 50 minutes to APPI by a bus. So, it takes about 180 minutes from Tokyo to APPI. Actually, APPI is not too far.



Useful Homepage

Whenever you would like to research APPI Resort in English, the following website is helpful to get the information about access, current condition of ski field, news and topics, etc. Please visit English homepage for checking all out.

<http://www.appi.co.jp/>



• About access, the schedules are sometimes changed by the revision.
For inquiry about APPI, please contact to English Service Centre.
e-mail : appi_english@ihr.co.jp Tel: +81-195-73-6401

APPI RESORT MUSLIM FRIENDLY

~ Be Happy In APPI ~

APPI Resort in Iwate prefecture in Japan
Services for Muslim Customers



Located in Tohoku region, APPI resort is without a doubt the most Muslim-friendly Resort in Japan that eager to cater to Muslim's needs. Tohoku region is the northern part of Japan that falls behind in terms of catering to Muslim needs, and APPI resort is leading the effort in the region.



Halal Menu



Japanese Meal Abalone Porridge Set

Halal Breakfast



Western Meal Set A



Western Meal Set B

APPI Resort in Iwate prefecture Services for Muslim Customers

Halal certified Japanese Restaurant "NANASHIGURE" in Hotel APPI Grand. The meal options in particular are very important when travelling. Therefore, we arranged the popular WASHOKU (Traditional Japanese food) to halal menu for our valuable overseas guests. Also, we are very attentive to the original Japanese tastes.

We are very welcome Muslim guests, and we are very happy to assist your precious holiday.



We serve authentic Japanese food that received local halal certification. Ramen, Sushi, Tempura, Udon, Hotpot, Beef bowl, etc



We will prepare your favorite Japanese food based on your budget and request.

Halal Lunch



Crab Cream Spaghetti with Salad



Beef Curry with Salad



Tempura Soba



Tempura Udon



Beef Ramen Noodles [Miso Flavoured Soup]



Special Pizza



Gyu-Don - Beef Bowl



Ten-Don - Tempura Bowl



Fried Chicken Set Meal



Beef Ramen Noodles [Soy Sauce Soup]

Please contact us 5 days in advance when you need.

We would appreciate your understanding for our Muslim Friendly Service before your arrival.

E-mail: appi_english@ihr.co.jp

Halal Dinner



Kani Shabu Set



Nigiri Sushi



Chinese Course A



Chinese Course B



Gyu Sukiyaki Set



Una Jyu - Eel on Rice



Western Course A



Western Course B





ANA INTERCONTINENTAL APPI KOGEN RESORT

ANA Intercontinental Appi Kogen Resort

LUXURY DESTINATION HOTEL



2022 CONTINENT WINNER
ASIA



WHO WE ARE – HOTEL



WHO WE ARE – HOTEL



WHO WE ARE – RESTAURANTS & BARS



WHO WE ARE – LOBBY LOUNGE



WHO WE ARE – ROOMS



WHO WE ARE – ROOMS



WHO WE ARE – ROOMS



THE RESORT

THE HOTEL



- 38 rooms
- Scheduled to open late Dec. 2021
 - All Club InterContinental Hotel
- 5 Suites including 1 Presidential Suite
 - Ski in / Out rooms

RESTAURANTS & BARS



- 1 Restaurant designed by HBA
- Farm to Table concept, using best Ingredients Japan has to offer
 - 1 Bar

FACILITIES & ACTIVITIES



- Spa, with Luxury Treatments
 - Public Onsen
- Ski & Snowboard
 - Golf
 - Gym

ROOMS

All rooms are InterContinental Club rooms.

Ground floor rooms have garden with ski in & out access



Room Type	No. of Rooms	Size
2 Twin Classic Mountain view	2	33.72m ²
2 Twin Classic with Private Garden	1	33.72m ²
2 Twin Classic	2	38.85m ²
2 Twin Classic Corner	1	51.62m ²
2 Twin Accessible with Private Garden	1	68.05m ²
2 Twin Premium with Private Garden	9	68.05-75.85m ²
2 Twin Premium with Terrace	17	68.05-70.73m ²
Premium Suite with Private Garden	1	102.03m ²
Premium Suite with Terrace	2	102.03m ²
Appi Suite	1	131.35m ²
Presidential Suite	1	306.9m ²



TRAVELING UP TO THE ANA CROWNE PLAZA RESORT APPI KOGEN IS A UNIQUE EXPERIENCE. WE REALIZE THAT THE MODERN BUSINESS TRAVELER ALSO NEEDS TO FIND SOME BALANCE AND NOT ALWAYS HAVE TO THINK ABOUT WORK. WE WILL DELIVER A DISTINCTIVE STAY. THE SURROUNDING NATURE AND FRESH AIR, HELP YOU FOCUS ON YOUR WORK—LIFE BALANCE AND BE FULFILLED. WE WILL INSPIRE YOU TO BE A DIFFERENT MORE RELAXED YOU, WITH MANY THINGS TO DO AND EXPLORE IN THE SURROUNDING AREA.



- WHO WE ARE - HOTEL



- WHO WE ARE - LOBBY



- ROOMS
- RESTORATIVE SPACES

The guest rooms have a refreshing view from the window, and there are plenty of variations so that you can choose according to each type

ROOM TYPE	NUMBER OF ROOMS	SIZE	CAPACITY	FLOOR
Main Standard TW	73	21.1 m ²	2ppl	3-6
Main Deluxe TW	73	29.37 m ²	2ppl+1	3-6
Main Deluxe	23	39.6 m ²	2ppl+2	3-6
Main Family	20	35.88 m ²	3ppl+1	3-7
Japanese TW	12	35.88 m ²	2ppl+2	3-6
Maisonette	9	56.18 m ²	3ppl+2	6-7
Japanese Maisonette	11	56.18 m ²	2ppl+2	6-7
Maisonette 2	1	63.8 m ²	5ppl	6
	1	60 m ²	2ppl+4	7



ROOM TYPE	NUMBER OF ROOMS	SIZE	CAPACITY	FLOOR
Tower TW	46	38 m ²	2ppl+2	3-10
Exe.Tower TW	30	38m ²	2ppl+2	11-16,18
Tower Family	16	50m ²	3ppl+2	3-10
Exe.Tower Family	16	50m ²	3ppl+2	11-19
Semi Suite	30	64-68m ²	2ppl+2	3-10
Exe.Semi Suite	18	64-68 m ²	2ppl+2	11-16
Connect Room or Suite	1	76m ²	2ppl+3	5
Japanese Sweet	1	76.6m ²	2ppl	18
Royal Sweet	2	114m ²	2ppl+2	17,18
Royal Sweet 2	1	114m ²	5ppl	17
Tower Royal SU	2	150m ²	4ppl+2	17,18
Tower Royal SU2	1	170m ²	4ppl+2	19
Tower SU	1	130m ²	7ppl	19

© 2023 IHG. All rights reserved. Proprietary and confidential – Further reproduction or distribution is prohibited.



- REFINED MEETINGS & EVENTS
- MEETINGS & EVENTS

MEETING ROOM	SPACE	THEATRE	CLASS ROOM	BANQUE	COCKTAIL
VEGAS	56m ²	60	36	30	30
CHOKAI	29m ²	24	18	12	—
KITAKAMI	72m ²	72	48	36	40
OIRASE	80m ²	80	54	60	50
HIMEKAMI	32m ²	30	24	24	—
MAEMORI	36m ²	30	24	18	—
HANAWA	126m ²	100	81	60	60
ARUBERUKU	172m ²	150	100	130	150
RYUGAMORI HALL	405m ²	500	300	264	300
MAKIBA HALL	486m ²	400	200	200	250
PLAZA HALL	111.6m ²	1600	500	640	1000



• NANASHIGURE

Venue Highlights

Japanese style interior

Menu concept

Japanese cuisine

Price point range

5000-7000 yen per person

USP

Seasonal ingredients

• Cuisine highlights

- Fresh seafoods, Wagyu beef

• Signature cuisine

- Maezawa Beef Sukiyaki /Shabu-Shabu Course

Signature drink

Local Sake "Nanbu-Bijin"

七時雨



LAPIN D'OR

Venue Highlights

You can enjoy the scenery of blessed nature through large window.

Menu concept

New York style steakhouse

Price point range

8000-25000 yen per person

USP

Local food

Cuisine highlights

Wagyu Steak

- Signature cuisine
- Grilled Sanriku
- Abalone

Signature drink

Well selected wines

LAPIN D'OR



• SUSHI NAGATA

Venue Highlights

Japanese style interior

Menu concept

Traditional Japanese authentic "SUSHI"

Price point range

15000-20000 yen per person

USP

- Local food
- The sushi chef will serve fresh Nigiri-zushi in front of you

Cuisine highlights

Nigiri-Zushi

Signature cuisine

Sashimi & Sushi course

Signature drink

Local sake "Nanbu-Bijin"

鮨 な が た

Sushi Nagata



• TEPPAN-YAKI KAZAN

Venue Highlights

You can enjoy conversations with the chef.

Menu concept

Make the best use of ingredients

Price point range

15000-25000 yen per person

USP

Seasonal Ingredients

Cuisine highlights

Wagyu beef,
Local Food

Signature cuisine

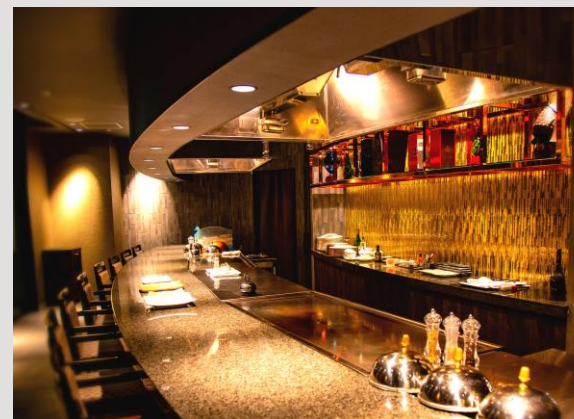
TANKAKU &
MAESAWA &
MATSUZAKA BEEF

Signature drink

Well selected wines

鉄板焼
華山

KAZAN
TEPPAN-YAKI



• RICHOKEN

Venue Highlights

You can enjoy the scenery of changing seasons in Appi Kogen through the window.

Menu concept

A premium Yakiniku restaurant that uses domestic Wagyu beef such as Maesawa beef.

Price point range

5000-7000 yen per person

USP

local cuisine"Moriooka Reimen"

Cuisine highlights

Wagyu Beef,
Korean cuisine such
as Stone-roasted bibimbap

Signature cuisine

Lightly Grilled
MATSUZAKA Beef
Premium Sirloin

- **Signature drink**
- Korean Rice Wine "Makgeolli"



• BIREIKA

Venue Highlights

Chinese style interior

Menu concept

chinese cuisine

Price point range

5000-7000 yen per person

USP

- Local food
- With the cooperation of the famous Chinese restaurant “Fureika / Tokyo Azabu”

Cuisine highlights

Wide range of menu

Signature cuisine

Peking duck, Steamed Soup Dumpling

Signature drink

”Shaoxing Wine”

中国料理 美麗華



• ARLBERG

Venue Highlights

A casual restaurant with an open atmosphere viewing the slopes

Menu concept

Breakfast & Dinner Buffet

Price point range

5000 yen per person

USP

Seasonal ingredients

Cuisine highlights

Freshly Cooked
Dishes

Signature cuisine

Hotel Mada
Dessert, Beef Steak

Signature drink

Bok choy & Mix
berry smoothie

ARLBERG



• GRAND CHARIOT

Venue Highlights

Relaxing Environment

Menu concept

Carefully selected whiskey and unique cocktails

Price point range

3000 yen per person

USP

Karaoke at VIP Room

Cuisine highlights

Dishes that go well with alcohol

Signature cuisine

Mixed Pizza

Signature drink

Local Beer



- IN THE HOTEL
- **OUR FACILITIES**

POOL & FITNESS

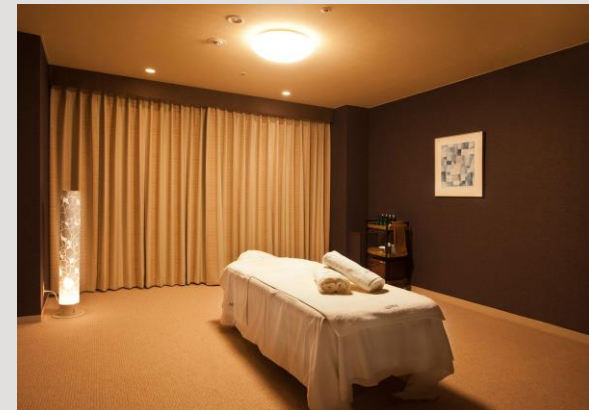
Sports Club Olympia Indoor Pool
Sports Club Olympia Machine Gym
Sports Club Olympia Amusement

SPA & WELLNESS

APPI SANATIO SPA
Hot Spring Public Bath & Sauna
Private SpaMAKIBA

RETAIL

Shop Cortina
Appi Happy Mall



Hotel overview

- **UNIQUE SELLING POINTS**



Gondola

Making Japanese Soba & Tohu



Close to Hot Spring "Shirakaba-no-Yu", "Appi Kogen Golf Club" & "Tennis Club"

Ski & Snowboard

Karaoke

UNIQUE SELLING POINTS



Onsen Destination

Soak your troubles away
in the rich minerals in
the resorts outdoor Onsen



The Heartland of Japan

There are so many
beautiful places to see
and explore in Iwate



Great Local Japanese Produce

Iwate has the best of both worlds,
with amazing Japanese seafood & Wagyu
Beef. Our chefs go from farm to table to
let the flavors of the ingredients speak
for themselves



Be at one with Nature

After breakfast, imagine
stepping out to the
garden and skiing to the
ski slopes.

HOTEL CONTACT INFO

Segment	Name	Title	Email	Phone
Sales Contact	Maki Tozawa	Director of Global Sales	makiko.tozawa@ihr. co.jp	+81 (0) 80-8854-7135
Ski	Yutaka Oikawa	Head Master Ski School	Yutaka@ihr.co.jp	+81 (0) 195-73-5111