

How to purchase the KINTETSU RAIL PASS

1. Purchase online at the Kintetsu website

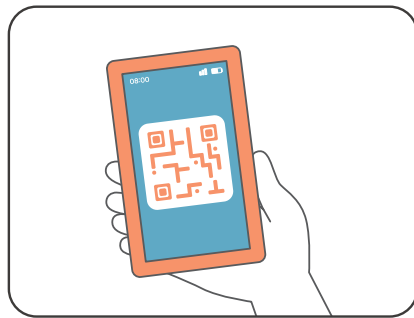


2. Purchase at a travel agency or other places where the KINTETSU RAIL PASS is on sale.

How to use the digital ticket KINTETSU RAIL PASS

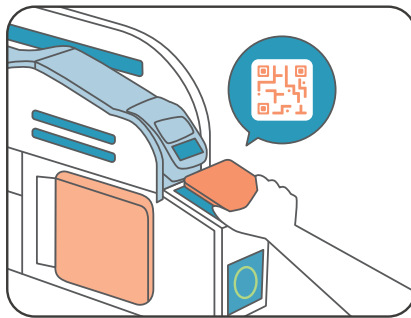
1

Display the digital ticket from the URL on the voucher.



2

Hold the displayed digital ticket over the reader at a digital ticket-compatible ticket gate.



3

When using the digital ticket for bus rides or at facilities that offer benefits, show the digital ticket to the staff.



For details, scan here. <https://www.kintetsu.co.jp/foreign/english/ticket/eticket.html>



Information on the Kintetsu Limited Express

- ✓ All seats are reserved, so seating is guaranteed.
- ✓ Advance purchase of a Limited Express ticket is required.
- ✓ Special in-car facilities are provided, including reclining seats and restrooms, allowing passengers to spend their travel time in greater comfort.

◎ Approximate necessary time between main stations, and Limited Express fares

Section	Approximate necessary time	Limited Express fare
Osaka-Namba – Kintetsu-Nara	35 min.	520 yen
Osaka-Namba – Kashikojima	2 hr. 35 min.	1,640 yen
Osaka-Namba – Kintetsu-Nagoya	2 hr. 10 min.	1,930 yen
Kyoto – Kintetsu-Nara	35 min.	520 yen
Kyoto – Kashikojima	2 hr. 45 min.	1,930 yen
Kyoto – Yoshino	1 hr. 40 min.	1,340 yen
Kintetsu-Nagoya – Kashikojima	2 hr. 10 min.	1,640 yen
Kintetsu-Nagoya – Kintetsu-Nara	2 hr. 35 min.	1,640 yen
Kintetsu-Nagoya – Yoshino	2 hr. 55 min.	1,930 yen
Osaka-Abenobashi – Yoshino	1 hr. 15 min.	520 yen

To board a Kintetsu Limited Express train, a Limited Express ticket is also required. Limited Express tickets can be purchased online or at a Limited Express ticket counter.

Online purchase (English only)



Limited Express ticket counter at Kintetsu stations



For details of the Kintetsu Limited Express, visit the Kintetsu website!

Kintetsu Limited Express Search

https://www.kintetsu.co.jp/foreign/english/about/limited_express/index.html



For KINTETSU RAIL PASS, airport access, and tourist information, visit the Kintetsu website.

Kintetsu Railway Search

<https://www.kintetsu.co.jp/foreign/english/>



KINTETSU RAIL PASS

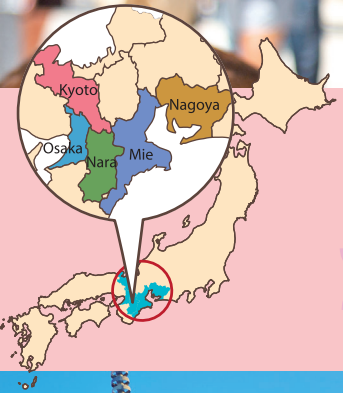
Osaka



Nara



Travel Kansai with special discount train tickets!



Kyoto



Mie



Nagoya



KINTETSU RAILWAY

National Parks of Japan Official Partner

Kintetsu Group (Kintetsu Railway Co., Ltd.) is supporting national parks.

The convenient and beneficial KINTETSU RAIL PASS is available in four varieties, offering a selection of durations and travel destinations!

Osaka

Nara

Kyoto

Osaka

Nara

Kyoto

Mie

Nagoya

KINTETSU RAIL PASS 1day

大阪・奈良・京都 One-day unlimited rides

Price Adult: 1,900 yen Child: 950 yen

Validity Valid for the date of use only

Kintetsu Line
Between Osaka-Namba and
Kintetsu-Nara; between Kyoto and
Tsutsui; between Nagata and Ikoma;
and between Torimae and Ikomasanjo

Nara Kotsu Bus
(Nara Park, Nishinokyo and
Horyuji Temple areas)

Special benefits offered by approx. 40 facilities

KINTETSU RAIL PASS 2day

大阪・奈良・京都 Two-day unlimited rides

Price Adult: 3,700 yen Child: 1,850 yen

Validity Valid for two consecutive days from the first date of use

Kintetsu Line
(All of Osaka, Nara and Kyoto
Prefectures)

Nara Kotsu Bus
(Nara Park, Nishinokyo, Horyuji
Temple, Asuka, Muro and
Yamanobe-no-Michi areas)

Special benefits offered by approx. 40 facilities

KINTETSU RAIL PASS 5day

Five-day unlimited rides

Price Adult: 4,900 yen Child: 2,450 yen

Validity Valid for five consecutive days from the first date of use

Kintetsu Line (all the lines)

Iga Tetsudo Line

Special benefits offered by approx. 70 facilities

KINTETSU RAIL PASS 5day plus

Five-day unlimited rides

Price Adult: 6,700 yen Child: 3,350 yen

Validity Valid for five consecutive days from the first date of use

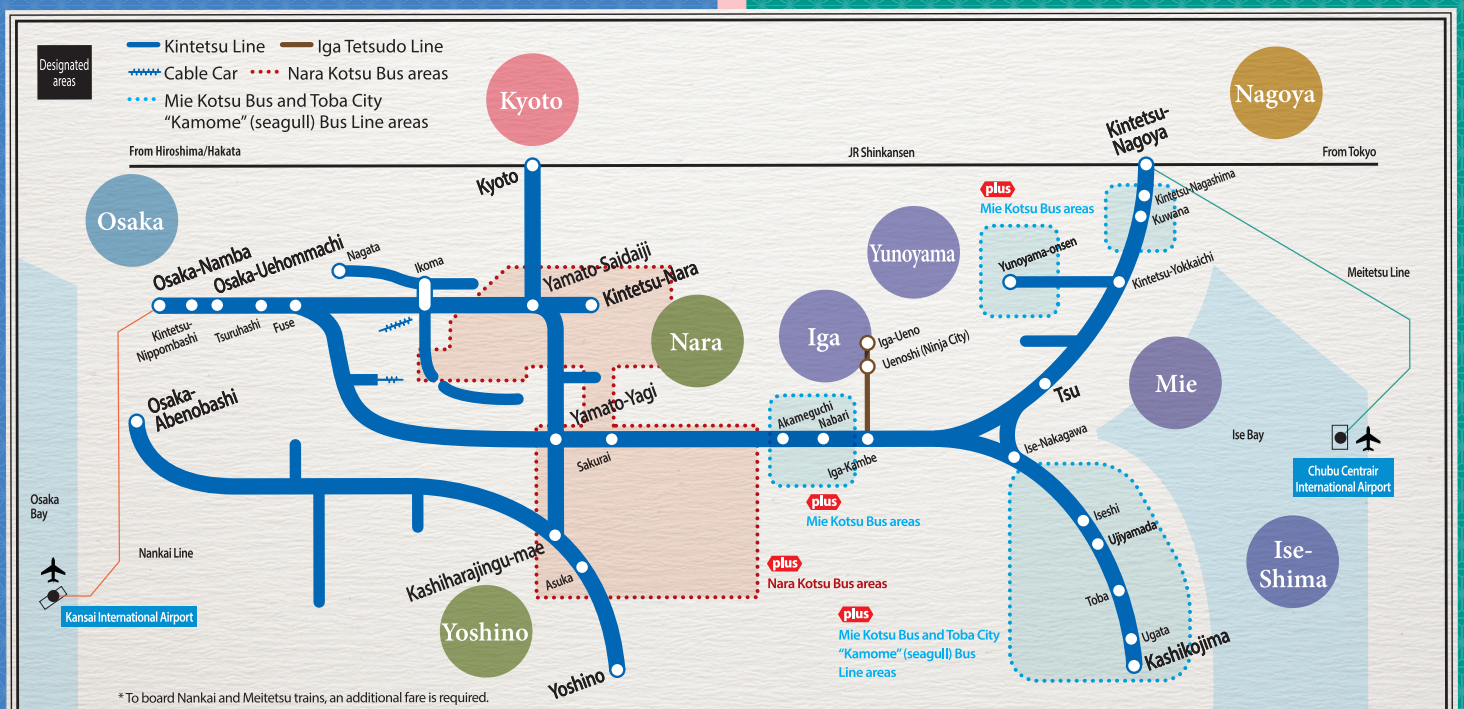
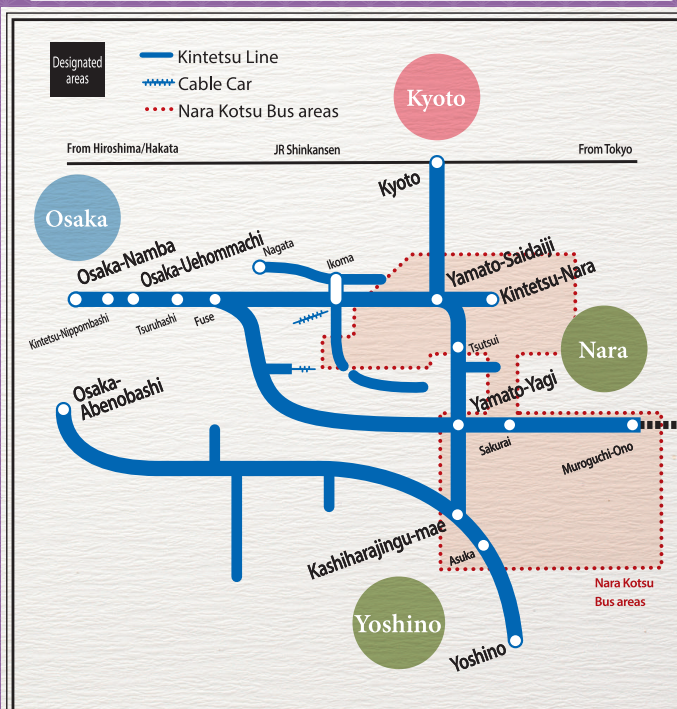
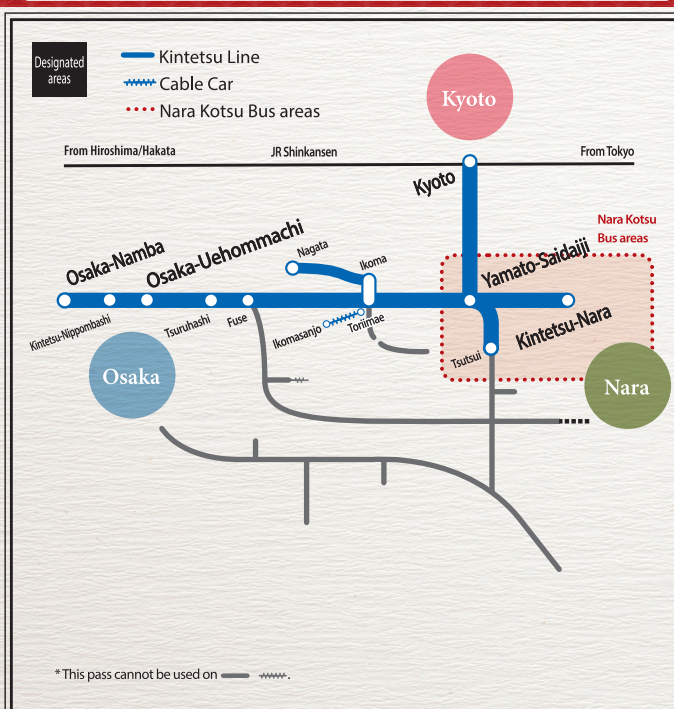
Kintetsu Line (all the lines)

Nara Kotsu Bus

Iga Tetsudo Line

**Mie Kotsu Bus and Toba City
"Kamome" (seagull) Bus Lines**

Special benefits offered by approx. 70 facilities



Introduction to facilities along Kintetsu Railway Lines Some facilities offer privileges upon presentation of your KINTETSU RAIL PASS.

Osaka

Abeno Harukas

An Osaka landmark building boasting a height of 300 m, full of enjoyable attractions including an observatory, a department store, and restaurants

Nearest station:
Osaka-Abenobashi Station



Nara

Kasugataisha Shrine

This is a shrine constructed approximately 1,300 years ago. The vermilion-lacquered main building is located in a primeval forest.

Take a bus from Kintetsu-Nara Station.



Mie

Gozaisho Ropeway

Taking a ropeway to the top of Mt. Gozaisho, 1,212 meters above sea level, is like actually walking in the air. Visitors can fully enjoy the seasonal beauties of nature.

Take a bus from Yunoyama-onsen Station and transfer to the ropeway.



Mie

Ninja Museum of Igaryu

This is a museum where visitors can learn about the mechanisms and traps of ninja houses and the art of the ninja. Ninja goods are also sold here.

10-min. walk from Ueno-shi Sta. on the Iga Tetsudo Line



Mie

Ama Hut Hachiman

You can listen to stories from active woman divers in the ama divers' hut. You can also enjoy hand-grilled seafood. (on request)

Toba Sta. → Pickup bus



For details,
click here.



Scan the QR
code to view
the video!

