



HOTEL
AGORA REGENCY
OSAKA SAKAI



Information for
School Excursion



HOTEL
AGORA REGENCY
OSAKA SAKAI

A rich educational opportunity to learn about history and tradition

Sakai is the home to Osaka's first World Heritage sites, the Mozu Tombs and the tomb of Emperor Nintoku. Additionally, Sakai has produced numerous prominent cultural figures such as Sen no Rikyū and Yasano Akiko. Encounters with the many traditional crafts of Sakai, such as knives, incense, kelp production, and more, that survive to this day provides a rich and meaningful learning opportunity. Access to Osaka is convenient as well so after taking in the charm of Sakai and Osaka, you may enjoy a relaxing and comfortable stay with us.



Information

- Address 4-45-1 Ebisujima-cho, Sakai-ku, Sakai, Osaka, 590-0985 Japan
- Contact TEL: +81-72-224-1121 FAX: +81-72-224-1120
- Nearest station Nankai Line – Sakai Station
(1 minute walk from the West exit)
- Building Information 26 Floors above ground, 2 sub ground level floors
- Business Facilities 241 Guest rooms (Maximum capacity - 482 people)

6 Restaurants / Bar Location

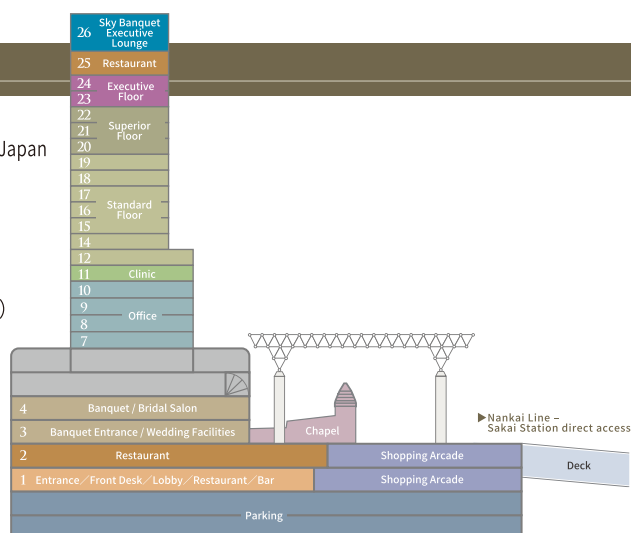
Banquet / Meeting Rooms : 17 (Largest capacity – 1,200 people)

Bridal Facilities / 2 locations (Chapel, Shinzenshiki Hall - (Japanese Wedding))

Shops, Regency Plaza

Bus Parking Lot / JPY 5,500 per night

Check-in 15:00 Check-out 11:00



■ Building Facilities

Elevators	4 (Capacity 20 each)
Vending Machines	Vending machines on each floor can be disabled
Shop	Regency Plaza
In-House Broadcasting	Entire facility announcement broadcasting possible
Delivery services	Available at the 1F front desk
Valuables check-in cloak	Available at the 1F front desk
Bus boarding area	At the hotel entrance (1F or 2F)
Meeting place for room coordinators	2F lobby
Bath	Bathrooms in guest rooms (no public bath facility available)

■ Emergency Facilities

Disaster Prevention	Emergency broadcasting system, Automatic fire alarm equipment, evacuation path lighting, guide maps, flashlights
Emergency evacuation site	Portus Courtyard adjacent to the hotel
Emergency hospital	Sakai City Medical Center (15 minutes by car) 1-1-1 Ebaraji-cho, Nishi-ku, Sakai Osaka, 593-8304 TEL:072-272-1199
Jurisdiction Fire Department	Sakai Fire Station 1-1-27 Ichinochōnishi, Sakai-ku, Sakai Osaka, 590-0951 TEL:072-228-4087
Jurisdiction Health Center	Sakai Health Center 3-1 Minamikawaramachi, Sakai-ku, Sakai Osaka, 590-0078 TEL:072-222-9936
Jurisdiction Police Station	Sakai Police Station 1-1 Kamiishiichinōchō, Sakai-ku, Sakai Osaka, 590-0951 TEL:072-223-1234

Guest Rooms

From west-facing rooms, Osaka bay can be seen in the foreground with the magnificent Akashi bridge and Awaji Island as a backdrop. The east-facing rooms overlook the historic cityscape, ancient tombs and Mt. Kongō in the distance.



Standard Twin City View (25m²)

[3 person capacity]
2 Regular beds +
1 Extra bed



Standard Twin Bayside View (33m²)

[4 person capacity]
2 Regular beds +
2 Extra beds

Guest Room Facilities

Room Key	Card type (All rooms use auto locking doors)
Bathroom	Toilet, Bath, Washlet toilet, Hair dryer
Room TV	26 inch flat screen television, regular broadcasting is free (paid broadcasting can be disabled)
Room telephone	External calling can be disabled
Refrigerator	Free use available
Airconditioning	Central AC throughout the hotel
Wake up call service	All rooms are equipped with wake up alarms, synchronized wake up call service available
Room amenities	Kettle, Tea set



Four elevators



Emergency exits (two exits each on both the West and East side of the building)



All rooms use card keys



Vending Machines



Bath Room



Bath Amenity

Hotel Pedestrian Flow



1F Entrance



1F Lobby – Gathering Area



2F Entrance

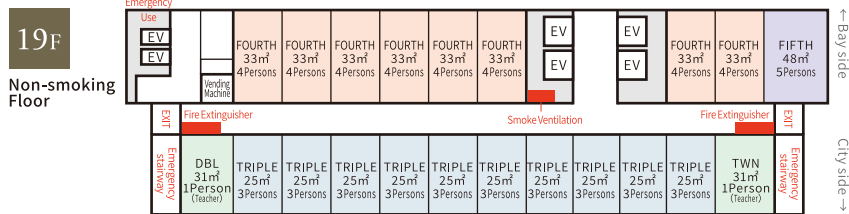


2F Cloak – Gathering Area

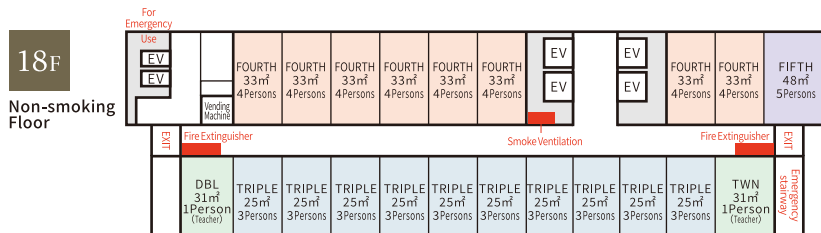
Floor Plans

We can accommodate up to 69 people in the sea side and city sides combined.
Exclusive use of one entire floor can be arranged upon request, subject to availability.

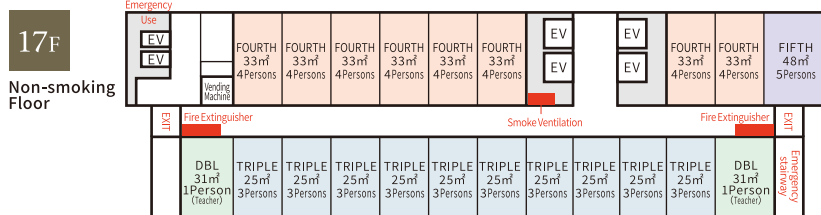
- ☐ Maximum Capacity – 414 people
- ☐ Maximum floor capacity – 69 people
- ☐ Elevators : 4 (Capacity – 20 people each)
- ☐ Emergency Exits – 2 exits per floor



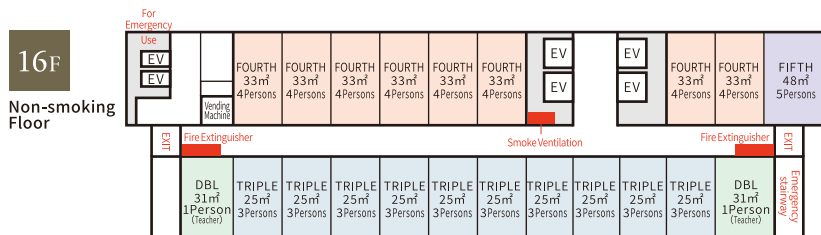
Type	NOR	Student (Pax)	Teacher (Pax)
Double	1	-	1
Twin	1	-	1
Triple	10	30	-
Fourth	8	32	-
Fifth	1	5	-
Total	21	67	2



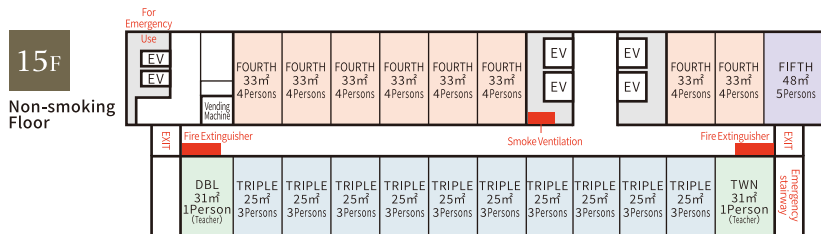
Type	NOR	Student (Pax)	Teacher (Pax)
Double	1	-	1
Twin	1	-	1
Triple	10	30	-
Fourth	8	32	-
Fifth	1	5	-
Total	21	67	2



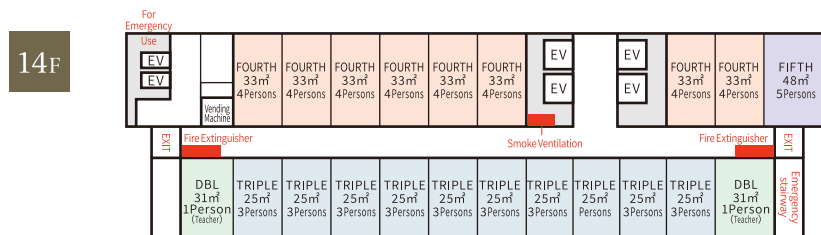
Type	NOR	Student (Pax)	Teacher (Pax)
Double	2	-	2
Triple	10	30	-
Fourth	8	32	-
Fifth	1	5	-
Total	21	67	2



Type	NOR	Student (Pax)	Teacher (Pax)
Double	2	-	2
Triple	10	30	-
Fourth	8	32	-
Fifth	1	5	-
Total	21	67	2



Type	NOR	Student (Pax)	Teacher (Pax)
Double	1	-	1
Twin	1	-	1
Triple	10	30	-
Fourth	8	32	-
Fifth	1	5	-
Total	21	67	2



Type	NOR	Student (Pax)	Teacher (Pax)
Double	2	-	2
Triple	10	30	-
Fourth	8	32	-
Fifth	1	5	-
Total	21	67	2

Banquets

Including small and large facilities, there are 17 banquet rooms. The largest hall, the Royal Hall, has a maximum capacity of 1,530 people. These spaces can be used for breakfast, lunch, dinner and various multi purposes.



Royal Hall

Area: 1,130m²

[Capacity]

- Formal Seating
~ 630 people
- School Seating
~ 820 people
- Theater Seating
~ 1,530 people



Rikyū

Area: 627m²

[Capacity]

- Formal Seating
~ 280 people
- School Seating
~ 360 people
- Theater Seating
~ 820 people



Shunkei

Area: 303m²

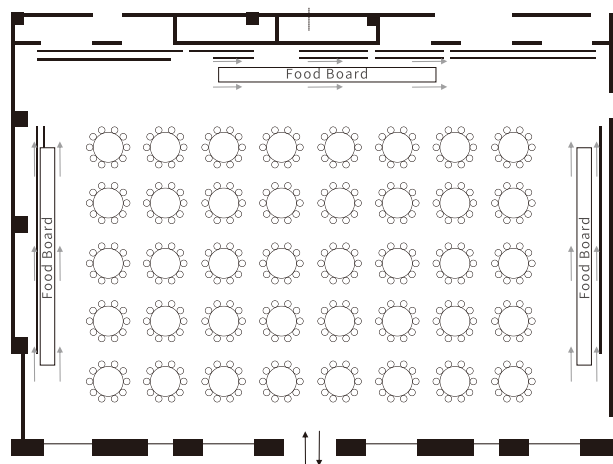
[Capacity]

- Formal Seating
~ 140 people
- School Seating
~ 180 people
- Theater Seating
~ 340 people

Layout Samples

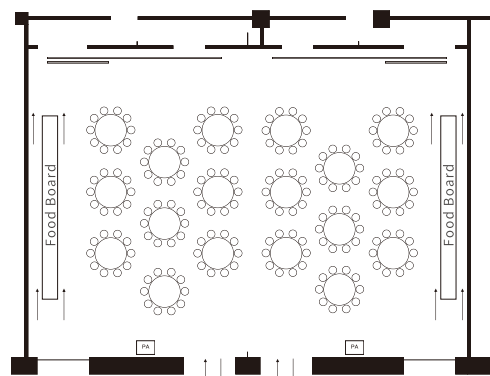
Royal Hall

Forty 10 person settings = 400 people



Rikyū

Eighteen 10 person settings = 180 people



Breakfast

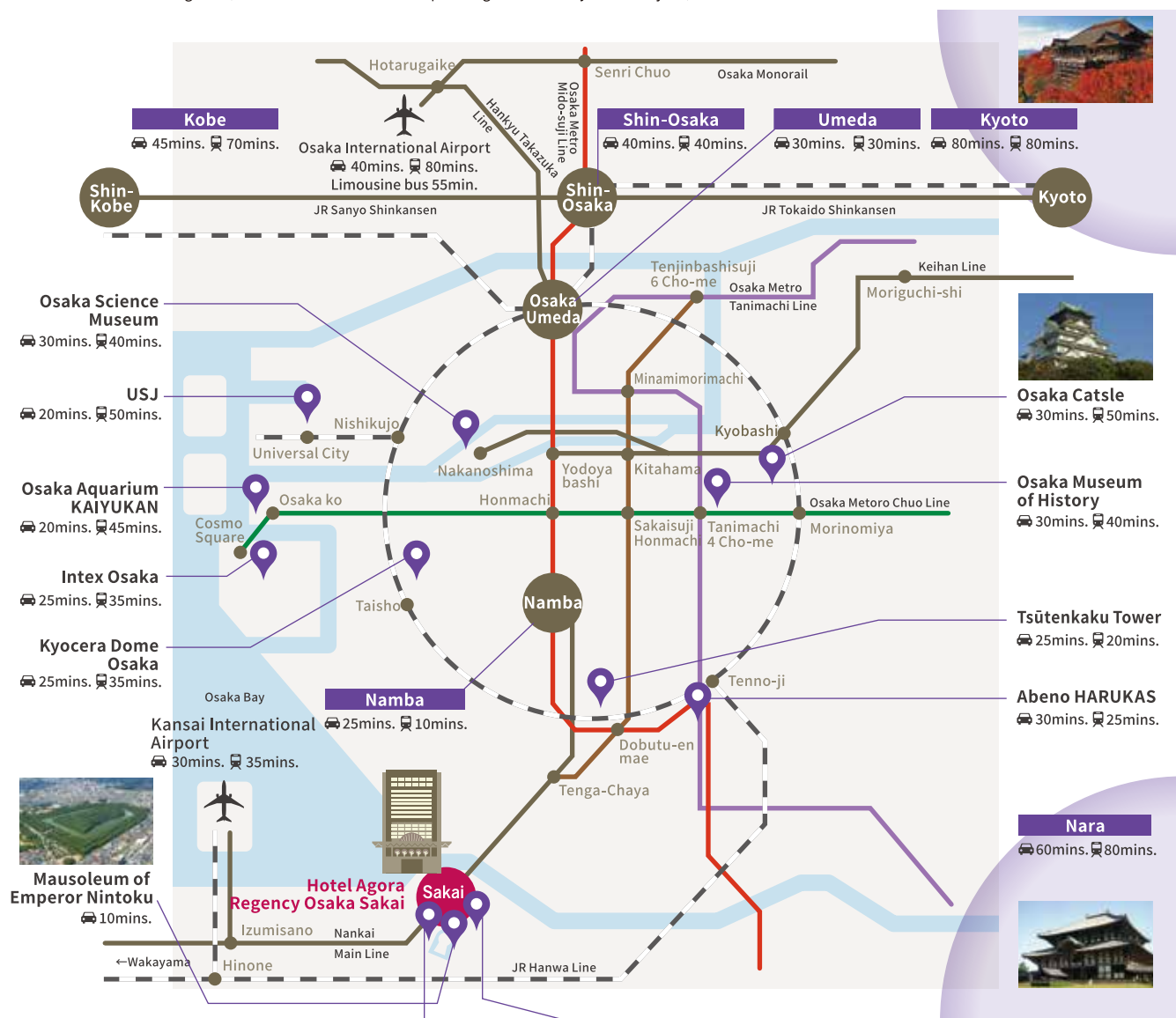


Dinner



Location & Access

Sakai is home to one of the world's three largest burial tombs, the Emperor Nintoku burial tomb and the World Heritage Site Mozu Tumuli Cluster, as well as being the home of the famous tea master, Sen no Rikyū and famous poet, Akiko Yosano. Additionally, it has a rich history that can still be viewed and experienced today in artifacts such as the oldest wooden western style lighthouse, Old Sakai Lighthouse, the Yamaguchi Family Residence, designated as a national cultural heritage site, and a tram that has been operating continuously since Meiji 44, 1911.



Sakai Plaza of Rikyu and Akiko 5mins. 15mins.

A tourist facility where the history and culture of Sakai can be experienced through learning about the master of the tea ceremony, Sen no Rikyū, and the singer Akiko Yosano.

Visitation Details: Tours and tea ceremony experience available (fees apply, reservation required for groups)



Clean Center Rinkai Factory 10mins.

An eco-friendly system through which, after separation, waste is burned and melted at high temperatures. Melted material, slag and metal, is recycled and the electricity generated via the burning of the waste is sold to power companies for distribution.

Tour Details: Visit to and explanation of the - Platform, Garbage Pit, Furnace, Electric Generation etc.



By Train

- Approximately 10 minutes from Nankai Nanba Station using the Southern Express, Airport Express or Limited Express
- Approximately 47 minutes from Wakayama station using the Special Express or Express trains

By Car

- From Osaka Direction
Approximately 10 minutes from the #15 Hanshin Highway Suminoe exit
Approximately 5 minutes from the Yamatogawa Hanshin Highway Sanbō or Teppō exits

By Car

- From Wakayama or Izumisano Direction
Approximately 5 minutes from the #4 Hanshin Highway Wangan Line Ōhama exit
Approximately 5 minutes from the Yamatogawa Hanshin Highway Sanbō or Teppō exits

From Airport

- Approximately 25 minutes from Nankai Kansai Airport Station by Special Express Rabbit or 35 minutes by Airport Express.



AGORA
HOTEL ALLIANCE

CONTACT

Agora Hotel Alliance
Alliance Sales

TOKYO

7th Toranomom Dai 2 Waiko Building
5-2-6 Toranomom, Minato-ku
Tokyo, 105-0001 Japan

Tel : +81-3-3436-1860
Fax : +81-3-3436-1861

Mail : sales@agora.jp

OSAKA

4-45-1 Ebisujima-cho, Sakai-ku, Sakai
Osaka, 590-0985 Japan

Tel : +81-72-224-6163
Fax : +81-72-224-6164