

# NEW GOLDEN ROUTE VIA HOKURIKU

Japan's New Golden Route lets foreign travelers to choose a new option to travel from Tokyo to Kyoto via the Hokuriku area. This less-explored part of Japan is generally more rural and less populated than the original Golden Route. By traveling this route with the Hokuriku Shinkansen, you can enjoy the natural beauty and rich culture of the region and partake in experiences that are difficult to have elsewhere.



## Tokyo



<https://www.gotokyo.org/en/index.html>



### Chankonabe ちゃんこ鍋

Chankonabe is a traditional hot pot menu that is often eaten by Japanese sumo wrestlers. You can find many chankonabe restaurants owned by former sumo wrestlers in Tokyo, especially around the Ryogoku Kokugikan Sumo Arena. The classic chicken nabe is a must-try.



### TOKYO SKYTREE® 東京スカイツリー®

Standing at 634 meters, TOKYO SKYTREE is the world's tallest freestanding broadcast tower. From the viewing deck, you can look over the city of Tokyo and Mount Fuji in the distance. The shopping area at the foot of the tower has more than 300 shops and restaurants.



### Imperial Palace 皇居

Built on the grounds of what used to be Edo Castle, the Imperial Palace is now where the Imperial Family of Japan spend their time at home. The surrounding nature and beautiful gardens are great for sightseeing all year round.

## Gunma



### Kusatsu Onsen 草津温泉

Kusatsu Onsen is one of Japan's best known onsen resorts, being home to many inns and shops around the famous Yubatake, the source of the area's onsen water. Catch the Yubatake at night, when it is lit up to spectacular effect.

### Sukiyaki すき焼き

Gunma has all the ingredients you need for a sukiyaki meal, such as local beef and Shiraishi noodles. Enjoy local ingredients in this Japanese traditional dish.



## Gifu



<https://visitgifu.com/>

### Hida Beef 飛騨牛

Hida beef is the beef brand of Gifu Prefecture, popular for its soft texture, beautiful marble and fragrance. You can find restaurants that serve a variety of Hida beef dishes all throughout the prefecture.



### Shirakawa-go 白川郷

At Shirakawa Village, you can experience traditional lifestyles and cultures that are still being practiced today. Known as a place where you can see the original landscapes of Japan, its beautiful scenery and architectural techniques have helped it receive designation as a UNESCO World Heritage Site.

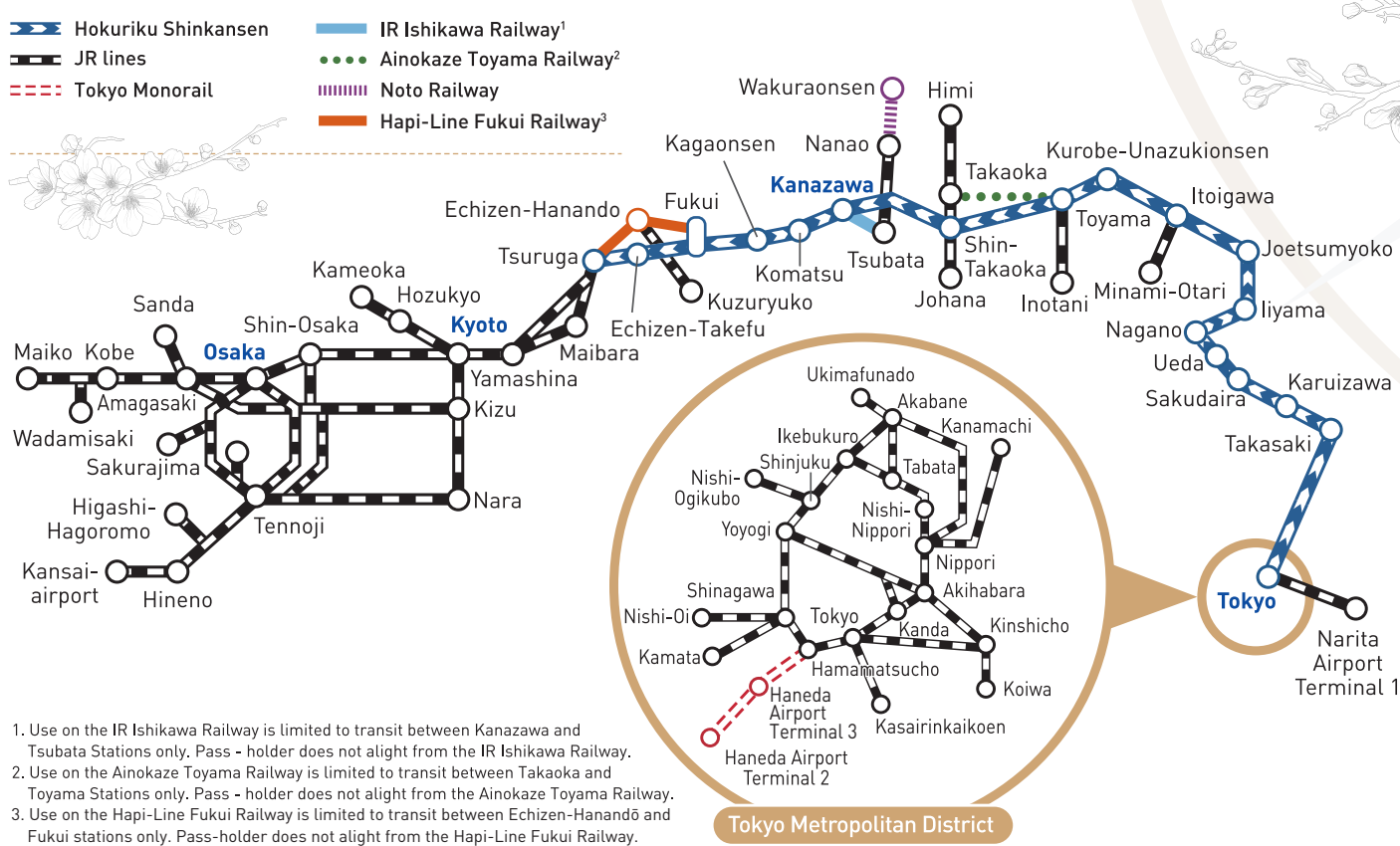
### Takayama Historical District 高山の古い町並

The Takayama Historical District is designated as a "must-visit location" in Japan and has achieved 3 stars in the Michelin Green Guide. In the historical district you can observe traditional crafts and enjoy delicious, skewered Hida beef while taking a walk through the timeless neighborhood.



## HOKURIKU ARCH PASS

Enjoy economical unlimited travel from Tokyo and Osaka to the Hokuriku area!



1. Use on the IR Ishikawa Railway is limited to transit between Kanazawa and Tsubata Stations only. Pass - holder does not alight from the IR Ishikawa Railway.  
2. Use on the Ainokaze Toyama Railway is limited to transit between Takaoka and Toyama Stations only. Pass - holder does not alight from the Ainokaze Toyama Railway.  
3. Use on the Hagi-Line Fukui Railway is limited to transit between Echizen-Hananda and Fukui stations only. Pass-holder does not alight from the Hagi-Line Fukui Railway.



### Kifune Shrine 興福院本宮 興福神社

Kifune Shrine is the head shrine for about 500 shrines in Japan. Enshrined here is the god of water, worshipped by those who work at restaurants and other businesses that depend on the use of water.



### Fushimi Inari Taisha Shrine 伏見稲荷大社

Fushimi Inari Taisha Shrine is the head shrine for about 30,000 shrines in Japan. It is known to enshrine the gods of harvest and prosperity. The sight of the thousand red torii gates is well-recognized internationally, attracting many visitors from abroad.

## Kyoto



<http://www.kyototourism.org/en/>



### Kyoto Cuisine 京料理

Kyo-ryori (Kyoto's local cuisine) has a subtle and delicate taste, mostly made with fresh vegetables, dried foods and soy-based ingredients. Carefully cooked and beautifully presented, Kyoto's cuisine is meant to be enjoyed with your five senses.

● HOKURIKU ARCH PASS is an unlimited local travel ticket that is available for use by foreign visitors.

By using the Hokuriku Arch Pass, you can travel from Kansai, Narita and Haneda airports to the

Hokuriku area on the Hokuriku Shinkansen and other express trains for 7 consecutive days.

There are also various discounts available at tourism destinations and local buses for those who have the Hokuriku Arch Pass.



Official web page  
[www.westjr.co.jp/global/en/ticket/pass/hokuriku-arch-pass/](http://www.westjr.co.jp/global/en/ticket/pass/hokuriku-arch-pass/)



Now, you can go through the automatic ticket gate using the Hokuriku Arch Pass! Please see the link below for details.

[www.westjr.co.jp/global/en/howto/ticket-vending-machine/](http://www.westjr.co.jp/global/en/howto/ticket-vending-machine/)

## Toyama



<https://foreign.info-toyama.com/en/>



### Tateyama Kurobe Alpine Route 立山黒部アルペンルート

At 3,000-meters in altitude, the view from Tateyama Alpine Route is said to be one of the most beautiful sceneries in the world. From the route, you can see beautiful scenery and enjoy trekking through the abundant nature. Mount Tateyama, the tallest mountain in the range is said to be one of the three major holy mountains in Japan.



### Toyama Bay Sushi 富山湾

Toyama Bay is blessed with a variety of seafood throughout the year. At sushi bars in Toyama you can enjoy deliciously fresh, first-rate sushi caught at Toyama Bay.

### Kurobe Gorge Railway 黒部峡谷トロッコ電車

The Kurobe Gorge Railway runs above the deepest canyon in Japan. During the ride, you can enjoy the magnificent view of the wilderness below. The one hour and twenty minute ride takes you through bridges and tunnels from Unazuki to keyaki-dara area.



## Fukui

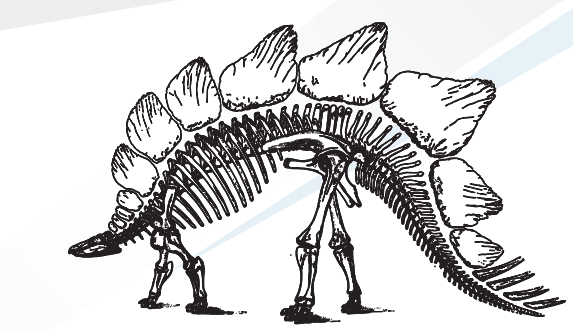


<https://www.fuku-e.com/lang/english/>



### Fukui Prefectural Dinosaur Museum 福井県立恐竜博物館

Katsuyama, Fukui Prefecture is the area of Japan where the most dinosaur fossils have been found. It has one of the world's three largest dinosaur museums, exhibiting dinosaur skeletons and life-sized dioramas.



### Sotomo Arch 蘇洞門

Sotomo Arch consists of a cave tunnel and rocks shaped by the harsh waves of the Sea of Japan. In 2017, it was chosen as one of Japan's 34 most beautiful places by CNN.



### Echizen Gani Crab 越前ガニ

Echizen gani crab is a famous type of crab caught in Fukui Prefecture. The yellow tag attached to the crab confirms that it is an authentic Echizen gani. It's a seasonal delicacy that can only be enjoyed around November to March.

## Ishikawa



<https://www.ishikawatravel.jp/>



### 21st Century Museum of Contemporary Art, Kanazawa 金沢21世紀美術館

The 21st Century Museum of Contemporary Art is a popular modern art museum that exhibits various artworks from around the world. One of the main works is Leandro Erlich's Swimming Pool, which uses an optical illusion.

### Kaga Cuisine 加賀料理

Not only delicious in taste but beautiful in presentation, Kaga Cuisine is served at traditional Japanese restaurants. Delicate dishes made with local produce are served in Kutani ware and other high-quality lacquerware.



### Kenrokuen Garden 兼六園

Kenrokuen is one of the most beautiful traditional Japanese gardens in the country. Built during the Edo period (1603-1867), the seasonal views there are breathtaking, such as the colorful leaves during fall. At night, seasonal illuminations light up various areas in the garden.



## Shiga



<https://en.biwako-visitors.jp/>

### Oni Beef 近江牛

Oni beef, one of the top Japanese beef brands, can be found at various restaurants throughout Shiga Prefecture. Because of its delicate texture, light but sweet taste and aroma, this beef is used at the highest levels of restaurants in the world.

### Hikone Castle 彦根城

Hikone Castle is designated as a national treasure alongside Ehime and Matsumoto castles. It is also one of the most well-preserved castles in the country. Many parts of the castle can still be seen in their original state, including the turret, which is a designated Important Cultural Property.



### MIHO Museum 美濃博物館

The MIHO Museum holds ancient artworks from not only Japan but all over the world, including West and South Asia, Greece, Rome, and China. The architecture, including the entrance path lined with cherry trees and the bridge leading to the museum, is designed by architect IM Pei. The design is based on the ancient Chinese story The Peach Blossom Spring.



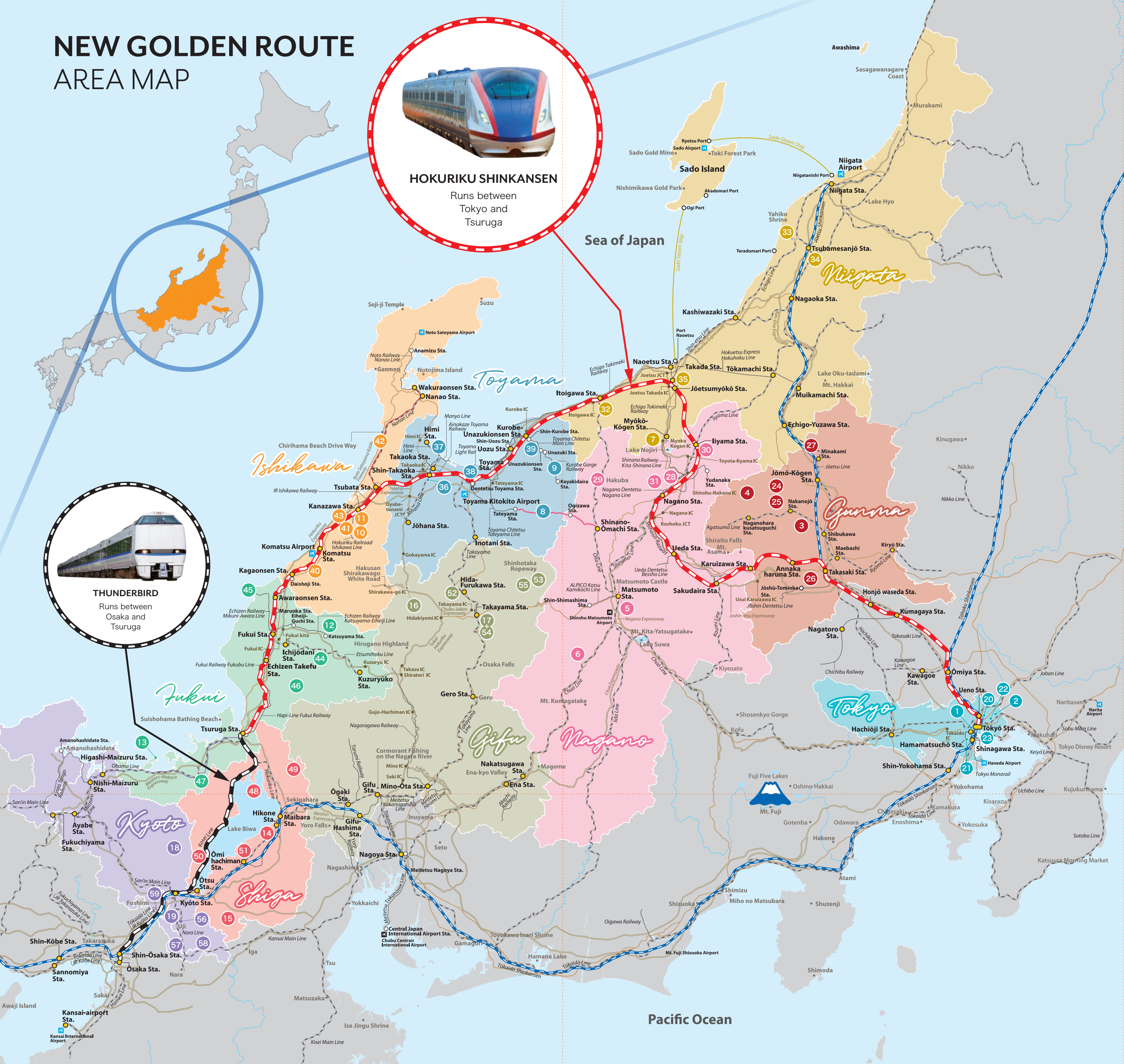
# NEW GOLDEN ROUTE AREA MAP



**HOKURIKU SHINKANSEN**  
Runs between  
Tokyo and  
Tsuruga



**THUNDERBIRD**  
Runs between  
Osaka and  
Tsuruga



## COURSE OVERVIEW

**The way of life**  
Course 1 | 8 days trip  
Dive deep into the living landscapes, townscapes, and metropolises of Japan's Original Golden Route.  
Good for: Couples  
The best time to visit: Autumn

**Winter highlights and gastronomy**  
Course 7 | 15 days trip  
Feel Zen atmosphere in snow and explore new culinary frontiers in gastronomy across Japan's Original Golden Route.  
Good for: Couples  
The best time to visit: Winter

**Nature & Experience**  
Course 5 | 19 days trip  
Discover the nature that sculpted Japanese culture along Japan's Original Golden Route.  
Good for: Families  
The best time to visit: Summer

**History / Tradition / Culture**  
Course 4 | 16 days trip  
Follow in the ancient footsteps of generations past on Japan's Original Golden Route.  
Good for: Couples  
The best time to visit: Spring/Autumn

### MORE INFORMATION

**Tokyo-Osaka via Hokuriku**  
**New Golden Route**  
Follow the Sea of Japan Northern Coast



<https://www.newgoldenroute.jp>

### Railway operation information

JR・EAST

<https://www.jreast.co.jp/multi/>

JR・WEST

<https://www.westjr.co.jp/global/en/>

**41 Gold Leaf Experience**  
金箔体験  
Decorate your own souvenirs with Kanazawa's famous gold leaf. Over 99 percent of Japan's gold leaf is produced in Kanazawa.  
📍 Kanazawa, Ishikawa

**42 Chirihama Nagisa Driveway**  
千鳥浜なぎさドライブウェイ  
You can drive a car or take a bike on this beach, which makes it quite rare in the world. In the summer, crowds of people flock to enjoy driving and swimming.  
📍 Chirihamamachi, Hakui - Imahama, Hokuriku, Ishikawa

**43 Hakusan Cycling**  
白川サイクリング  
Cycling is a great way for visitors to experience the scenic views of the Hakusan area. Highlights include Shirayama Hime-jinja Shrine, Shishiku Highland, and the waterfalls of Todoroki Canyon.  
📍 Kanazawa, Ishikawa

**44 Echizen Ono Castle**  
越前大野城  
Between October and April, the castle becomes covered in a sea of clouds, giving it the name "Castle in the Sky".  
📍 3-109 Shiromachi, Ono, Fukui

**45 Tojinbo Cliffs**  
東尋常  
A scenic spot where you can see a kilometer and a half of jagged landscape carved by the wild waters of the Sea of Japan.  
📍 Tojinbo, Mikunouchi, Sakai, Fukui

**46 Tree Picnic Adventure IKEDA**  
ツリーピクニックアドベンチャーいけだ  
A "forest theme park" with a 60-m zipline and various other outdoor activities.  
📍 28-116 Shizuhara, Ikeda, Imadate District, Fukui

**47 Kumagawa-juku**  
熊川宿  
A historic post town situated along the Saba Kaido ("Mackinac Road"), a network of trade routes that connected Wakasa (Fukui), known for its amazing seafood, to Kyoto, the ancient capital of Japan.  
📍 Kumagawa-juku, Wakasa, Fukui

**48 Chikubushima**  
浮城島  
Located here are Hogonji Temple and Tsukubusuma-jinja Shrine (Three Great Shrines of Benetani), and Karamon (a national treasure).  
📍 Nagahama, Shiga

**49 GRANSNOW OKUBUKI**  
GRANSNOW奥吹  
The largest ski resort in the Kansai area. It is also easy to access from Kyoto and Nagoya.  
📍 Okubuki, Kozuhara, Maibara City, Shiga

**50 Ukimido "Floating Temple"**  
浮御堂  
Built in the late Heian Period, the beautiful temple has fascinated many poets such as Matsuo Basho.  
📍 1-16-18 Honkatake, Otsu City, Shiga

**51 Daimonya Co., Ltd.**  
だるまのふるさと大門  
Daruma dolls are good luck charms that have originated in Takasaki. Personalize your Daruma by having your name written on it or by painting your own.  
📍 124-2 Fujizakamachi, Takasaki, Gunma

**52 SATOYAMA EXPERIENCE**  
里山エクスペリエンス  
A cycling tour around rural landscapes. You can experience pristine Japanese scenery.  
📍 1-32 Furukawacho Ninomachi, Hida City, Gifu

**53 Shinhotaka Ropeway**  
新穂高ロープウェイ  
Japan's only two-story gondola lift takes you over the great landscapes of the Northern Alps.  
📍 710-719 Okukida Onsenjo, Takayama City, Gifu

**54 Takayama Jinja**  
高山神社  
A government office that is designated as a Japan Heritage Site. It is the only major building left from the Edo Period.  
📍 1-5 Hachiken-machi, Takayama City, Gifu

**55 Okuhida Hot Spring Villages**  
奥飛騨温泉郷  
Five hot spring villages are spread out at the foot of the Northern Japan Alps and visitors can enjoy over 140 open-air baths in these villages.  
📍 Okuhida Onsen-go, Takayama City, Gifu

**56 Byodoin Temple**  
平等院  
Byodoin is a World Heritage Site, also famous for its Phoenix Hall which appears on the 10yen coin in Japanese currency.  
📍 116 Uji Renge, Uji City, Kyoto

**57 Keihanna Commemorative Park**  
けいはんな記念公園  
This park was built in 1995 to commemorate the establishment of Kansai Science City. Its theme is "twisting in one with nature".  
📍 6-1 Sekodaki, Sekai-cho, Soraku-gun, Kyoto

**58 Tea Picking and Hiking in Wazuka Town**  
和束町茶摘み体験&茶畑散策  
Wazuka, with its beautiful scenery of tea farms, is Japan's first producer of Uji-cha (Tea). You can participate in a farm tour and also experience tea harvesting.  
📍 35 Shirasu Ohazama, Wazuka-cho, Soraku-gun, Kyoto

**59 Take-no-Michi (Otokuni)**  
竹の道 (乙訓)  
Nested in the hills of Miko City, you'll discover Take-no-Michi, a grove of bamboo that rivals even Arashiyama. Its walking trails stretch approximately 1.8km and offer picturesque views of handmade bamboo hedges.  
📍 Tarashicho Shibayama and Momote-cho, Mako City, Kyoto

## Recommended Sightseeing Spots

**20 Sensouji Temple**  
浅草寺  
The oldest temple in Tokyo. Famous for the Kaminarimon gate with giant lanterns and the lively Nakamise Shopping Street.  
📍 2-3-1 Asakusa, Taito City, Tokyo  
🚶 5 min walk from Asakusa Sta. (Tokyo Metro Ginza Line, Toei Asakusa Line or Tobu Skytree Line, Toei Asakusa Line)

**21 Hamarikyū Gardens**  
浜町御苑  
A traditional Japanese garden loved by people over many generations since the Edo period.  
📍 1-1 Hamarikyūen, Chuo City, Tokyo  
🚶 7 min walk from Shodome Sta. (Toei Oedo Line or Yui Kamome Line)

**22 Water Bus**  
水バス  
Enjoy seeing the city of Tokyo, called the "City of Water" in ancient times, as you travel from Sumida River to Tokyo Bay.  
📍 1 Hanakawado, Taito City, Tokyo  
🚶 To Tokyo Cruise Asakusa Pier: 1-3 min walk from Asakusa Sta. (Tokyo Metro Ginza Line, Tobu Skytree Line, Toei Asakusa Line)

**23 teamLab Planets TOKYO**  
チームラボプラネッツ TOKYO  
teamLab Planets is a museum where you walk through water and a garden where you become one with the flowers.  
📍 teamLab Planets TOKYO, Toyosu 6-1-16, Koto City, Tokyo  
🚶 1 min on foot from Shin-Tokyo Sta. (New Transit Varsity Line) 10 min on foot from Toyosu Sta. (Tokyo Metro Yamanote Line) 5 min on foot from Shinjuku Sta. and Toyosu Market

**24 Shima Onsen**  
四方温泉  
Shima Onsen is a quiet, remote resort that is home to the ryokan that is rumored to have served as inspiration for "Spiced Away".  
📍 4379 Shima, Nakagyo, Agatsuma District, Gunma (Shima Onsen Association)  
🚶 From JR Nakanojo Sta. (JR Agatsuma Line), take the bus for 40 min to Shima Onsen Sta.

**25 Lake Shima Canoe**  
四方湖カヌー  
This reservoir lake is known for its naturally vivid, cobalt blue water. To see it at its best, take the water in a canoe.  
📍 29 Shima, Nakagyo, Agatsuma District, Gunma  
🚶 From JR Nakanojo Sta., take the bus for 15 min to Shimaoka Sta.

**26 Daimonya Co., Ltd.**  
だるまのふるさと大門  
Daruma dolls are good luck charms that have originated in Takasaki. Personalize your Daruma by having your name written on it or by painting your own.  
📍 124-2 Fujizakamachi, Takasaki, Gunma  
🚶 From JR Takasaki Sta., take the Gururin Shinkansen Bus for 20 min to Yawata Choji Center Mae Sta.

**27 Mt. Tanigawa**  
谷川岳  
Mt. Tanigawa (1,977m) is a rugged mountain straddling Gunma and Niigata prefectures. It is a popular hiking route and sightseeing spot from July to November and a backcountry ski destination in winter.  
📍 124-2 Fujizakamachi, Takasaki, Gunma  
🚶 From JR Takasaki Sta., take the Gururin Shinkansen Bus for 20 min to Yawata Choji Center Mae Sta.

**28 Obuse**  
小布施  
Obuse is an idyllic town surrounded by orchards of apples and chestnuts in Northern Nagano. It is known primarily for the Hokusai art museum and its many cafes and restaurants.  
📍 Obuse Town, Nagano  
🚶 From JR Nagano Sta., take Nagano Dentetsu Railway for about 25 min to the Obuse Sta.

**38 Fugan Canal Kansui Park**  
富良野川環水公園  
A green oasis in the city, where you can board a cruise ship and sail along the river on the Fugan Suigo Line.  
📍 Minatoirifune-cho, Toyama  
🚶 9 min walk from Toyama Sta.

**39 Unazuki Onsen**  
宇奈月温泉  
Unazuki Onsen is on the Kurobe River, at the gateway to Kurobe Gorge. Many inns and hotels are situated along the river, with mountain and forest views.  
📍 Unazukionsen, Kurobe, Toyama  
🚶 About 25 minutes by train from JR Kurobe Unazukionsen Station

**40 Natadera Temple**  
那知寺  
Many of the buildings at this old temple with a 1,300-year history are designated as National Important Cultural Properties. The natural rocky mountains form a unique landscape in the vast precincts.  
📍 Yu-122 Natamachi, Komatsu, Ishikawa  
🚶 30 min from JR Kaga Onsen Sta. by CANBUS.

**43 Hakusan Cycling**  
白川サイクリング  
Cycling is a great way for visitors to experience the scenic views of the Hakusan area. Highlights include Shirayama Hime-jinja Shrine, Shishiku Highland, and the waterfalls of Todoroki Canyon.  
📍 Kanazawa, Ishikawa

**44 Echizen Ono Castle**  
越前大野城  
Between October and April, the castle becomes covered in a sea of clouds, giving it the name "Castle in the Sky".  
📍 3-109 Shiromachi, Ono, Fukui  
🚶 1 min walk from Echizen Railway from Fuku Sta. to Mikuni Sta. (JR Fukui Line or Etsumi-Hoku Line)  
🚶 Take the Keifuku Bus from Fuku Sta. stop to Ono-Rakken bus stop then walk 30 min

**45 Tojinbo Cliffs**  
東尋常  
A scenic spot where you can see a kilometer and a half of jagged landscape carved by the wild waters of the Sea of Japan.  
📍 Tojinbo, Mikunouchi, Sakai, Fukui  
🚶 Tojinbo bus stop  
🚶 1 min walk from Tojinbo Bus to Mikuni Sta. (JR Fukui Line or Etsumi-Hoku Line)  
🚶 Take the Keifuku Bus from Fuku Sta. stop to Ono-Rakken bus stop then walk 30 min

**48 Chikubushima**  
浮城島  
Located here are Hogonji Temple and Tsukubusuma-jinja Shrine (Three Great Shrines of Benetani), and Karamon (a national treasure).  
📍 Nagahama, Shiga  
🚶 30 min drive from either Maibara IC or Nagahama IC  
🚶 25 min from Imau Port  
🚶 40 min by bus from JR Oni-Nagaoka Sta.

**49 GRANSNOW OKUBUKI**  
GRANSNOW奥吹  
The largest ski resort in the Kansai area. It is also easy to access from Kyoto and Nagoya.  
📍 Okubuki, Kozuhara, Maibara City, Shiga  
🚶 30 min drive from either Maibara IC or Nagahama IC  
🚶 25 min from Imau Port  
🚶 40 min by bus from JR Oni-Nagaoka Sta.

**50 Ukimido "Floating Temple"**  
浮御堂  
Built in the late Heian Period, the beautiful temple has fascinated many poets such as Matsuo Basho.  
📍 1-16-18 Honkatake, Otsu City, Shiga  
🚶 1 min walk from Momo IC  
🚶 2 min from Momo IC  
🚶 2 min from Momo IC  
🚶 2 min from Momo IC  
🚶 2 min from Momo IC

**29 Hakuba**  
白馬  
Located at the base of the Japanese Alps, the Hakuba Valley is a paradise of outdoor activities year-round. Enjoy skiing, snowboarding and snowmobiling in winter and hiking, cycling and mountain biking in summer.  
📍 Hakuba Village, Kitazumi District, Nagano  
🚶 From JR Nagano Sta., take Alpico Hakuba Bus for about 1 hour to the Hakuba Valley

**30 Shin'etsu Shizenkyo**  
信越自然郷アクティビティセンター  
The Shin'etsu Shizenkyo Activity Center is your door to the Japanese countryside. Take a self-guided tour with rental bicycles or join a guided trip through the idyllic scenery of Northern Nagano Area.  
📍 772-6 Iiyama, Nagano  
🚶 Inside JR Iiyama Sta.

**31 Zenkoji Temple**  
善光寺  
Zenkoji Temple has 1,400 years of history and stands in the center of Nagano City. Pilgrims from around Japan come to see Zenkoji's Morning Service and pray for their salvation in the afterlife. (Photo by Zenkoji)  
📍 491 Nagano-Mototsuyoshi, Nagano City, Nagano  
🚶 From JR Nagano Sta., 30 min by foot or 15 min by bus (to Zenkoji-Daimon bus stop)

**32 Tanimura Art Museum**  
谷村美術館 玉翠園  
Located next to Tanimura Art Museum, Gyokusen Garden incorporates the natural background and steep mountains, combining them with exquisitely landscaped hills and two waterfalls to create a majestic scene which changes with the seasons.  
📍 2-1-13 Kyogamine, Itogawa, Niigata  
🚶 From Itogawa Sta., then walk 20 min

**33 Yahiko Shrine**  
弥彦神社  
A shrine with over 2,000 years of history. The location is surrounded by trees and has a quiet and sacred atmosphere.  
📍 2887-2 Yahiko, Nishikambara District, Niigata  
🚶 From Tsuabane-Sanjō Sta., take the JR Yahiko Line to Yahiko Sta., then walk 15 min  
🚶 You can also drive from Tsuabane-Sanjō Sta.

**34 Sanjo Blacksmith Dojo**  
三条鍛冶道場 (ペーパーナイフづくり)  
You can participate in a paper knife-making workshop and experience Sanjo's blacksmithing techniques.  
📍 11-53 Motomachi, Sanjo, Niigata  
🚶 From Tsuabane-Sanjō Sta., transfer trains to Kita-Sanjō Sta. then walk 3 min

**35 Takada Castle Site Park**  
Takada Castle Site Park Lotus Festival  
高田城址公園蓮花会  
In summer, visitors can witness the entire moat covered in lotus blossoms, heralded as the best in Asia. Takada Castle Site Park Lotus Festival is held in mid-July to late August.  
📍 44-1 Motohiro-cho, Joetsu, Niigata  
🚶 15 min walk from Takada Sta.

**36 Nousaku**  
能作  
Here, you can observe Copperware the traditional casting techniques of Takaka. The tin casting workshop is most recommended.  
📍 1-1 Office Park, Takaka, Toyama  
🚶 23 min by bus from Shin-Takaka Sta.

**37 Amaharashi Coast**  
雨晴海岸  
The iconic view of Toyama Bay against the dramatic backdrop of the snowy Tateyama mountains is unforgettable.  
📍 Ootamamachi, Takaoka, Toyama  
🚶 About a 5-minute walk from Amaharashi Station on the JR Hime Line

**51 Hachiman-bori Canal**  
八幡堀  
You can take a pleasure cruise down the Hachiman-bori Canal, enjoying the seasonal scenery that includes cherry trees and iris flowers planted along its banks.  
📍 Miyazuchi-cho, Oni-Hachiman City, Shiga and surrounding area  
🚶 Oni-Hachiman Station (JR Biwako Line) 12 min by bus and alight at the Ougi-cho bus stop

**52 SATOYAMA EXPERIENCE**  
里山エクスペリエンス  
A cycling tour around rural landscapes. You can experience pristine Japanese scenery.  
📍 1-32 Furukawacho Ninomachi, Hida City, Gifu  
🚶 1.5 hours from Toyama Sta. to Takayama Sta. (JR Takayama Main Line) then walk 20 min from Takayama Sta. to Hida-Furukawa Sta. (JR Takayama Main Line)

**53 Shinhotaka Ropeway**  
新穂高ロープウェイ  
Japan's only two-story gondola lift takes you over the great landscapes of the Northern Alps.  
📍 710-719 Okukida Onsenjo, Takayama City, Gifu  
🚶 2 hours 25 min from Toyama Sta. (Nohi Bus)

**54 Takayama Jinja**  
高山神社  
A government office that is designated as a Japan Heritage Site. It is the only major building left from the Edo Period.  
📍 1-5 Hachiken-machi, Takayama City, Gifu  
🚶 1.5 hours from Toyama Sta. to Takayama Sta. (JR Takayama Main Line) then walk 10 min from Takayama Sta. to Hida-Furukawa Sta. (JR Takayama Main Line)

**55 Okuhida Hot Spring Villages**  
奥飛騨温泉郷  
Five hot spring villages are spread out at the foot of the Northern Japan Alps and visitors can enjoy over 140 open-air baths in these villages.  
📍 Okuhida Onsen-go, Takayama City, Gifu  
🚶 1 hour from Takayama Sta. (Nohi Bus)

**56 Byodoin Temple**  
平等院  
Byodoin is a World Heritage Site, also famous for its Phoenix Hall which appears on the 10yen coin in Japanese currency.  
📍 116 Uji Renge, Uji City, Kyoto  
🚶 Ride the JR Nara Line from Kyoto Station to Uji Station then walk 10 min from JR Uji Station

**57 Keihanna Commemorative Park**  
けいはんな記念公園  
This park was built in 1995 to commemorate the establishment of Kansai Science City. Its theme is "twisting in one with nature".  
📍 6-1 Sekodaki, Sekai-cho, Soraku-gun, Kyoto  
🚶 From Kyoto Station, take Kintetsu Kyoto Line and get off at Shin-Hosono Station. Then, take Nara Kotsu Bus No. 56 for Gakken Nara Tomiyoko Station and get off at Keihanna Kinen Koen

**58 Tea Picking and Hiking in Wazuka Town**  
和束町茶摘み体験&茶畑散策  
Wazuka, with its beautiful scenery of tea farms, is Japan's first producer of Uji-cha (Tea). You can participate in a farm tour and also experience tea harvesting.  
📍 35 Shirasu Ohazama, Wazuka-cho, Soraku-gun, Kyoto  
🚶 Take the Kansai Main Line to JR Kamo Sta., then take the Nara Bus (heading to Wazuka-cho Station) to Wazuka Yama-no-ue and walk 4 min

**59 Take-no-Michi (Otokuni)**  
竹の道 (乙訓)  
Nested in the hills of Miko City, you'll discover Take-no-Michi, a grove of bamboo that rivals even Arashiyama. Its walking trails stretch approximately 1.8km and offer picturesque views of handmade bamboo hedges.  
📍 Tarashicho Shibayama and Momote-cho, Mako City, Kyoto  
🚶 Bus: Take a bus from "Natsugawa" station on the JR Kyoto Line or "Kakuguchi" station on the Hankyu Kyoto Line and get off at Mako City Hospital, then walk 10 minutes