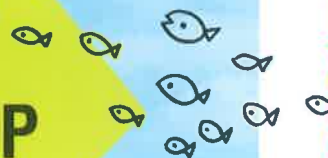


NAGATORO

長瀬の楽しみ方GUIDEBOOK



Welcome to 長瀬!
**Tourism
Guide MAP**
for English



*Beautiful
Nagatoro!*



Welcome to Nagatoro!



③ Hodosan Jinja Shrine (宝登山神社)

Hodosan Jinja Shrine was built in the year 110A.D. on the foot of Mt. Hodo. Many worshippers visit the shrine to pray for protection against disaster, theft, and hardships. The sculptures of the shrine's main building are spread out in beautifully colors.

(About ICONS)

	Tourist Information		Temple
	Toilet		Shaved ice
	Parking		Souvenir shop
	River boating		Restaurant
	Canoe/Rafting		Rent-A-Cycle
	Accommodation		Post Office
	Camp		Police
	Cherry blossom St.		Fire department
	Flower		Gas station
	Autumn leaves		

② Hodosan Small Animal Zoo (宝登山小動物公園)



It is a zoo for small animals on the top of Mt. Hodo. This zoo cares for a variety of small animals such as the Japanese monkey and the spotted deer. You can feed the monkeys on Monkey Mountain. It is quite exciting to watch the monkeys catch the feed you throw to them.

① Mt.Hodo (宝登山)

Its elevation is 497 meters. It boasts azaleas in spring, fresh verdure in summer, red leaves in autumn, and winter sweet and plums in winter. You enjoy a view of the Chichibu city and Chichibu mountain range in the Mt. Hodo summit. Mt. Hodo lies 900 meters directly west of Nagatoro station. It takes about 20 minutes on foot. You can reach to top of the mountain in around minutes by ropeway transfer. There are also paths to the top. It takes around 5 minutes to reach the top of the mountain on foot.

Wintersweet garden Plum Garden

① Mt.Hodo (497m)

② Hodosan Small Animal Zoo

Mt.Hodo Ropeway

Fudoji Temple

③ Hodosan Jinja Shrine

The Historic Arai Silk Worm House/ Nagatoro Town Museum

④ The Historic Arai Silk Worm House/ Nagatoro Town Museum (旧新井家住宅・長瀬町郷土資料館)

Folk material on matters such as silkworm culture and agriculture gathered mainly from Nagatoro is on display here. The adjoining Historic Arai Silk Worm House is designated as one of the important cultural assets of Japan. The house was built 270 years ago and was a place where silkworms were raised. The house features chestnut plating and the shingle roofing is supported by rocks.



The Seven Flower Temples of Nagatoro (秋の七草寺めぐり)

The seven flowers of autumn are Japanese bush clover, Japanese pampas grass, arrowroot, fringed pink, golden lace, bonaset, and balloon flower. These time-honored flowers have been adored by the Japanese for generations and are featured many times in the famous poems of the Manyoshu anthology. Each of the seven flower temples displays one of these flowers. Visiting these temples is the perfect way to tour the town while taking a walk or a bicycle ride.



⑤ Nagatoro Iwadatami (岩畳)

This is a natural monument of Japan. Rocks up to 80 meters wide and 500 meters long can be seen along the Arakawa River. The formation resembles a laid out tatami mat, hence the name Iwadatami which translates to tatami mat of rocks. You can enjoy the beautiful formation created naturally by changes in the earth's crust and erosion from the river.



⑥ The Saitama Museum of Natural History (自然の博物館)

A collection of various fossils, rocks, minerals, and animals are on display here. Fossils of an extinct giant shark and the rare "paleoparadoxia" are the must-sees.

⑦ River Boating (川下り)

It gets down from Arakawa which flows through Nagatoro with a Japanese-style boat. You can enjoy the gorgeous river valley all the while being lead down the powerful rapids by the boatman's skillful paddling and taking in the view of the natural monument, Nagatoro Iwadatami.



NAGATORO INFORMATION

Rent a power-assisted bicycle



Application

Nagatoro Tourist Information Center

Charges

1 hour	¥ 500
2 hour	¥ 1,000
Half a day (Maximum 4 hours)	¥ 1,500
One day (Maximum 8 hours)	¥ 2,500

open

9:00~17:00
 *Prior reservation is possible.
 ☎0494-66-3311
 (Nagatoro Tourist Information Center)

Cautions when using the service [Nagatoro Electric-power Travel Bicycle].

- ◎Please understand that we may not be able to fulfill your expectation during peak season.
- ◎Please follow the traffic rule and ride safely.
(Riding roughly might cause damage to the bicycle.)
- ◎Please protect the time for the rental service.
- ◎When leaving your rental bicycle, please lock it.

River Boating



Open 9:00~16:00

Price 3km course Adult ¥1,600 Child ¥800
 6km course Adult ¥3,000 Child ¥1,400

Nagatoro line-Kudari ☎0494-66-0950
<http://www.chichibu-railway.co.jp/line/index.html>

Adventure Funakudari ☎0494-69-2151
<http://www.funakudari.co.jp/>

Arakawa line-Kudari ☎0494-66-0890
<http://www.arakawa-line.co.jp/>

Hodosan Ropeway



Access 900m from Nagatoro station.
 About 20 minutes walk

Address 1766, Nagatoro, Nagatoromachi

Open 9:40~17:00 (Time changes according to a season.)

Ticket One way Adult: ¥480 Child: ¥240
 Round trip Adult: ¥820 Child: ¥410

☎0494-66-0258
<http://www.hodosan-ropeway.co.jp/>

4カ国語に対応!
 音声案内対応

観光案内看板の
 ご案内
 Audio Guidance



This "smile mark" is showing our hospitality for foreign visitors and you can see it from tools for Nagatoro visitors, such as audio guidance and brochures.



一般社団法人 長瀬町観光協会 Nagatoromachi Tourist Association

529-1, Nagatoro, Nagatoromachi, Chichibugun, Saitamaken 369-1305

TEL:0494・66・3311 FAX:0494・66・0308

Nagatoromachi Tourist Information Center TEL.0494・66・0307