



THE ORIGIN OF JAPAN HYOGO

Official Hyogo Guidebook

English



兵庫旅

Let's take a walk through Hyogo



Discover the old & new everywhere you walk

<https://www.hyogo-tourism.jp/>

Japan
Hyogo

Hyogo has everything!
Hot springs, great food,
history and nature.

Hyogo

[Hyogo is the Center of Japan]

Hyogo prefecture is located in the center of Japan, with the meridian (135 degrees east longitude) that sets Japanese Standard Time inside the prefecture. Due to its convenient location, Hyogo is well-connected to other major cities by highways, railroads, and airlines.

[Hyogo, the Possible Origin of Japan]

According to the legend in the Kojiki, the oldest book of historical records in Japan, Awaji Island in Hyogo was the first island of Japan to be created. Hyogo, Osaka and Kyoto, the central area of Kansai region, was the center of Japanese politics and culture for over 1,000 years before the capital moved to Edo (current Tokyo) 1600. Because of this background, Hyogo has many important cultural assets and historical and natural heritage sites, including the famous Himeji Castle.

[Hyogo is a Prefecture of Gourmet Food]

Hyogo is famous for its wonderful food. Who can forget the world renowned taste of Kobe Beef? Come and enjoy genuine Kobe Beef at its origins. Along with Kobe Beef, seafood is extremely popular in Hyogo. Fresh and delicious seafood is caught from the Sea of Japan in the winter and from the Seto Inland Sea in the summer. If you ever try sweet Matsuba crabs in winter, it will be something you'll never forget. Also famous for its sweets and sake, Hyogo offers amazing dining experience like no other.

[Hyogo and its Famous Hot Springs]

One thing that most visitors to Japan look forward to is onsen, or hot springs, and Hyogo has many hot springs all over the prefecture. Arima Hot Springs in Kobe is one of the oldest in Japan, and is considered to be one of the three best hot springs in the country. Also, Kinosaki Hot Springs in northern Hyogo has been a popular getaway for many writers and artists who are looking for a nice quiet place to relax and spend some time. If you are visiting from another

country, Kinosaki will allow you to experience the unique atmosphere of Japan and its hot spring town.

[Friendly to International Visitors]

Hyogo prefecture has always been an important place for trading because of its geographical advantages. Especially since the opening of the Port of Kobe in 1868, it has attracted many foreign traders and became an important hub for international trade. There are a large number of international companies situated in Hyogo even today, with many foreign residents. This makes Hyogo a very comfortable place to visit for all international travelers. Hyogo always welcomes visitors from other countries.

Come enjoy the unique culture and food that can only be experienced in Hyogo. We hope this guide book will help you make the most of your time in this amazing prefecture.





Settsu

MAP P34 MAP P35

Kobe *A vibrant and stylish city.*

Sannomiya and Motomachi areas are the busiest parts of Hyogo. From fashionable stores and restaurants to European-style buildings in the Former Foreign Settlement or Kitano Foreign Residences, this area is known as one of the most lively and stylish areas in Japan. Nankinmachi, or Kobe's Chinatown, is only a few minutes' walk from Motomachi station. Walking towards the Port of Kobe you'll find the symbol of the port, Port Tower, and the Maritime Museum, which is shaped like a sailing ship in Meriken Park. At night, the area is illuminated and the Port Tower lights up a beautiful red color. The night view of Kobe is something you cannot miss out. Soaking up the view on a cruise that sails from the port to the Akashi Kaikyo Bridge is one of the most popular activities in Kobe.



Kobe Animal Kingdom



Kobe Animal Kingdom is a unique zoo located in the city of Kobe. It is mostly an indoor, greenhouse-style area, allowing visitors to enjoy the experience even on rainy days. Within the park, various animals and plants coexist, and visitors can observe the animals moving freely up close. There are also plenty of feeding opportunities and events to enjoy.

Website: <https://www.kobe-oukoku.com/en>
Tel: 078-302-8899
Hours: 10:00-17:00 (Last admission 16:30)



Dates closed: Thursdays (open on public holidays, spring break, Golden Week, and summer vacation).
For the latest information, please visit our website.

Admission: Adults (middle school age and older) ¥2,200,
Elementary school children ¥1,200, Ages 4-5 ¥500,
Seniors (+65) ¥1,600

Access: 1 minute walk from Port Liner Keisan Kagaku Center station (bus service available).

Kobe Harborland



A small-scale amusement park, fashionable stores, restaurants, and Kobe souvenirs can be found here.

Kobe Harborland Information Center

Website: <https://harborland.co.jp.e.abt>

hp.transer.com/

Tel: 078-360-3639



Nankinmachi



Kobe, Yokohama and Nagasaki are home to the three largest Chinatowns in the country. Every year on Chinese New Year, Nankinmachi hosts a festival with cultural events such as Lion Dance and Dragon Dance.

Access: 5 minutes walk from JR Motomachi station.

Website: <https://www.nankinmachi.or.jp/>



AQUARIUM×ART átoa



átoa

Website: <https://atoa-kobe.jp/>

Tel: 078-771-9393

Hours: 10:00-19:00 (Last Admission 18:30)

Dates closed: Open year-round

(maintenance closures may occur)

Admission: Adults (Ages +13): ¥2,600, Child (Ages 7-12): ¥1,500,
Infant (Ages 3-6): ¥500, One free child per adult

Access: 20 minutes walk from all lines at Sannomiya Station /
Just a short walk from the "Shinko-chou" stop
on the Shinko Bus Port Loop from Sannomiya Station.



Kitano Area

A modern city filled with foreign influences.

With the opening of Kobe Port, foreign cultures began to make their way into the city. From the early Meiji period (1868-1911), new cultural influences and industries started to develop. Between 1878 and the early Taisho period (1912-1926), the lives of foreigners flourished, and they began building homes on the hills of the Yamate area (Kitano). This marked the beginning of the Kitano Foreigners' Settlement. Over 100 houses were built during this time.

The Kitano area, symbolizing the Western influence on Kobe, continues to attract tourists from across the country. There are over 20 buildings, including the Weathercock House and Moegi House, which have been designated as Important Cultural Properties. The Kitano area is home to famous tourist spots, interesting shops, souvenirs, and a wide variety of delicious restaurants, making it the perfect place to spend a day. To fully enjoy this area, take your time to stroll through the town.

Access: 15 minutes walk from JR/Hanshin/Hankyu/Kobe Municipal Subway Sannomiya station.



Weathercock House



House of Uroko (Scale)



Moegi House



Rhine House

Ikuta Shrine



This historical and well-respected shrine even appears in the Nihon Shoki, the second oldest book of classical Japanese history. It is a very popular shrine that is known as a shrine of love, business, health, and fortune.

Website: <https://ikutajinja.or.jp/>

Tel: 078-321-3851

Hours: 7:00-17:00

Access: 10 minutes walk north from JR/Hankyu/Hanshin Sannomiya station.



KOBE KITANO NOSTA



A gourmet complex in the Former Kitano Elementary School, which has over 90 years of history, offering a variety of options including a café serving sweets made with local Kobe ingredients, a grill restaurant featuring Kobe beef and Hyogo produce, a sweets shop, a bakery, a coffee shop, and a selection of Nada sake.

Website: <https://kobekitano-nosta.jp/>

Tel: 078-891-6442

Hours: 8:00-23:00 (varies by store)

Dates closed: New Year's holidays

Access: 12 minutes minute walk from JR Motomachi station





Kikusedai observation platform on Mount Maya

Mount Rokko **Enjoy the rich nature, beautiful scenery, and outdoor activities.**

The Rokko Mountain range stretches 30km from east to west. It is a popular site for outdoor activities for the people of Kansai. The spectacular night view of Kobe from Mt. Rokko and Mt. Maya is often called 'Ten million-dollar view by night'.

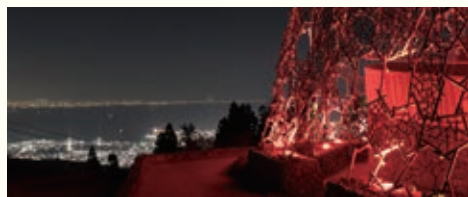
Website: <https://www.rokkosan.com/top/?lang=en>

Access: Take a city bus from JR or Hankyu Rokkomichi station to the Rokko cable car.



Only about an hour's drive from Sannomiya, you'll be able to experience nature's beauty in all seasons. Standing 931 meters above sea level, this mountain offers many leisure facilities.

Rokko Garden Terrace



A scenic viewpoint at an altitude of about 880 meters. During the day, enjoy a panoramic vista of Kobe and Osaka, and at night, take in the illuminated cityscape, often called the 'Ten Million-Dollar Night View.' There are also plenty of dining options where you can try Mount Rokko dishes, including grilled mutton (Jingisukan), as well as souvenir shops.

Website: <https://www.rokkosan.com/gt/?lang=en>

Tel: 078-894-2281

Hours: Vary by season and store. Please refer to the official Rokko Garden Terrace website for details.

Dates closed: Vary by season and store. Please refer to the official Rokko Garden Terrace website for details.

Admission: Free.

Note: The "Rokko Shidare Observatory" has an admission fee.

Access: By car: About 30 minutes from downtown Kobe via the Omote Rokko Driveway (toll-free).

By train: Take the Rokko-sanjo bus to "Rokko Garden Terrace," which is just a short walk away.



Rokko Musical Box Museum & Gardens MORINONE



A museum showcasing antique musical boxes and other automatic musical instruments produced in Europe and America from the 19th to the early 20th century, with exhibits and performances. Popular attractions include musical box assembly experiences, sound displays in the natural garden, a cafe terrace, and a treehouse.

Website: <https://www.rokkosan.com/museum/?lang=en>

Tel: 078-891-1284

Hours: 10:00-17:00 (Last Admission 16:30)

Dates closed: Thursdays (open during summer break, event periods, and holidays), 12/31, 1/1

Admission: Adults (12 years and older) ¥1,500, Children (4-11 years old) ¥750

Access: 1 minute walk from the Rokko Sanjo Bus stop "Musical Box Museum"



Museums The Must-See Museums in Kobe

Kobe City Museum



Opened in 1982, the museum revolves around the theme of Intercultural Exchange. Its permanent exhibition focuses on the city of Kobe as well as cultural exchanges between Japan and other countries.

Website: <https://www.kobecitymuseum.jp/notice/language>

Tel: 078-391-0035

Hours: 9:30-17:30 (Last admission 17:00)

Dates closed: on Mondays (The following day when Mondays falls when Mondays fall on a national holiday), New Year holidays

Admission: Adults ¥300, College Students ¥150, High School Students and younger free

Access: 10 minutes walk from JR/Hankyu/Kobe Municipal Subway Sannomiya station, or JR/Hanshin Motomachi station.



Hyogo Prefectural Museum of Art



The largest art museum in western Japan, this beautiful concrete building covered with glass and Mikage stone was designed by the world renowned architect Tadao Ando. Many artworks from both Japanese and international artists are on display. Special exhibitions (additional fee required) are also held.

Website: <https://www.artm.pref.hyogo.jp/eng/>

Tel: 078-262-0901

Hours: 10:00-18:00 (Last entry 17:30) Closed on Mondays, New Year's Eve and New Year's Day

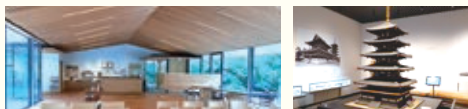
Price: Adults ¥500, College Students ¥400, Seniors (+70) ¥250

High School students and under are free

Access: 10 minutes walk from JR Nada station/ Hanshin Iwaya station.



Takenaka Carpentry Tools Museum



The one and only museum of carpentry in Japan. In addition to a display of carpentry tools, the exhibition includes a model of Toshodaiji Temple and an impressive skeleton of a tea ceremony room. As the building itself is a masterpiece in craftsmanship, this is a museum where you can experience the mastery of carpentry.

Website: <https://en.dougukan.jp/>

Tel: 078-242-0216

Hours: 9:30-16:30 (Last admission 16:00)

Dates closed: Mondays (The following day when Mondays falls on a national holiday) and New Year's holidays

Admission: Adults ¥700

High school / College Students ¥500

Seniors (+65) ¥500

Junior high School students and under are free

Access: 3 minutes walk from Subway Shinkobe station.

Catch the Kobe-shi Bus as line No.2 or No.18 from Sannomiya station.

Get off at the Kumochi 6-chome bus stop and 2 minutes walk.



Disaster Reduction and Human Renovation Institution



This institution was founded to convey the experiences and lessons from the Hanshin-Awaji Earthquake to the next generation and to reduce damage during disasters. There are diorama models that show rows of houses and stores immediately after the quake and a theater.

Website: <https://www.dri.ne.jp/en/>

Tel: 078-262-5050

Hours: 9:30-17:30 (Last admission 16:30)

Dates closed: Mondays

Admission: Adults ¥600, College Students ¥450, senior(+70) ¥300

High School Students and younger are free.

Access: 12 minutes walk from JR Nada station or

10 minutes walk from Hanshin Iwaya station/ Hanshin Kasuganomichi station.



Kobe Beef

The world's best beef, Kobe beef

Whether visiting from overseas, or from a nearby prefecture, most visitors refuse to leave Kobe without trying the famous, world-class Kobe Beef. It was named by the foreign settlers that came and lived in Kobe when the Port of Kobe opened in 1868. The tender, juicy, beautifully colored, and highly marbled meat was extremely popular, and it is still loved by gourmets across the world today.



Kobe Plaisir



Kobe Beef steak, shabu-shabu, and seiro-mushi (steamed in a wooden frame holder) served with other fresh ingredients from Hyogo. Enjoy a nice, relaxing dinner with specially selected Japanese sake and wine.

Website: <https://kobe-plaisir.jp/english/>
Tel: 078-571-0141

Hours: Lunch 11:30-15:00 (L.O.14:00),
Dinner 17:00-22:00 (L.O.21:00),
Closed on Mondays

Access: 3 minutes walk from Sannomiya station



Kobe steak restaurant Mouriya (Flagship restaurant)



The established Kobe beef restaurant first opened its door back in 1885. The finest quality is always guaranteed.

Website: <https://www.mouriya.co.jp/en/>

Tel: 078-391-4603

Hours: 11:00-22:00 (L.O.21:00)

Access: 3 minutes walk from Sannomiya station.



Teppanyaki Fuji Kobe (Flagship restaurant)



From adults to children, enjoy famous Kobe Beef Steak to casual Soba-meshi fried rice. Specially-selected Kobe Beef Course can be shared with family and friends. Dishes are served at affordable price in a friendly atmosphere.

Website: <https://www.teppanyaki-fuji.jp/english-infomation/>

Tel: 078-391-1141

Hours: Lunch 12:00-14:00
Dinner 17:00-22:00 (L.O.21:00)

Dates Closed: Irregular holiday

Access: 3 minutes walk from Hankyu/
Subway Sannomiya station



Misono



Misono was the first restaurant to introduce teppanyaki steak and still preserves its authentic flavor today

Website: <http://misono.org/en/>
Hours: Lunch 11:30-14:30 (L.O.13:30)
Dinner 17:00-22:00 (L.O.21:00)
Tel: 078-331-2890

Access: 2 minutes walk
from Hankyu/
Subway Sannomiya
station



Kobe Beef Steak Teppanyaki SETUGEKKA (Flagship restaurant)



Skilled chefs cook well-aged Kobe Beef in the best way to bring out the rich flavor. Enjoy crispy yet melting texture of the world's finest steak.

Website: <https://www.kobe-setsugetsuka.com/>
Tel: 078-333-7080

Hours: Weekdays 17:30-23:00 (L.O.21:00),
Weekends and holidays
17:00-23:00 (L.O.21:00)

Access: 1 minute walk
from Hankyu Sannomiya
station (West Exit)



Arima Onsen



Arima Onsen is located near the downtown of Kobe, yet it is surrounded by the beautiful nature of Mt. Rokko. One of the three best hot springs of Japan, this hot spring town with a nostalgic atmosphere has two public baths. Visitors don't have to stay at the inn to bathe in its hot spring, and can enjoy different hot springs in one day.

Kin no Yu and Gin no Yu



Arima Onsen's most famous bath, kinsen, or the gold spring, is popular for its high salinity and mineral-rich water.



Kin no Yu

Website: <https://arimaspaspa-kingin.jp/en-01.htm>

Tel: 078-904-0680

Hours: 8:00-22:00 (Last entry 21:30) Closed on 2nd and 4th Tuesdays of the month, and New Year's Day.

Admission: Adults (High School Student and older) Weekdays ¥650, Weekends ¥800, Junior High School / Elementary School Students ¥350, Infants are free

Access: 5 minutes walk from Kobe Electric Railway Arima Onsen station. JR Bus runs from Sannomiya station to Arima Onsen station (40 minutes.)



Gin no Yu

Website: <https://arimaspaspa-kingin.jp/en-02.htm>

Tel: 078-904-0256

Hours: 9:00-21:00 (Last entry 20:30) Closed on first and third Tuesdays of the month, and New Year's Day.

Admission: Adults (High School Student and older) Weekdays ¥550, Weekends ¥700, Junior High School / Elementary School Students ¥300, Infants are free

Access: 10 minutes walk from Kobe Electric Railway Arima Onsen station. JR Bus runs from Sannomiya station to Arima Onsen station (40 minutes.)



Arima Toys & Automata Museum



This museum displays a vast array of toys such as vintage tin toys, and explains how they work. There is no doubt that people at all ages can enjoy.

Website: <https://arima-toys.jp/en/facility/arima-toy-museum/>

Tel: 078-903-6971

Hours: 10:00-17:00 (Last Entry 16:30)

Admission: Adults ¥800, Children ¥500,

Free under the age 3.

Access: 5 minutes walk from Arima Onsen station.

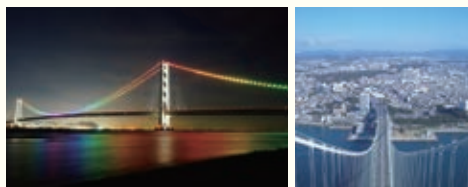


West Kobe

A Town Surrounded by Sea and Mountains, Touching the Majesty of Nature

Located to the west of Kobe, this area offers easy access to both mountains and the sea. It is well-connected by train and features many family-friendly attractions. The area is also home to a popular outlet mall.

Akashi Kaikyo Bridge & Maiko Marine Promenade



©Honshu-Shikoku Bridge Expressway Company Limited

The bridge first opened on April 5th of 1998, and is one of the world's longest suspension bridge with a center span of 3,991 meters. It connects Kobe and Awaji Island. At night, the bridge is illuminated and changes its color depending on time and season. Visitors can also enjoy the Maiko Marine Promenade, the Akashi Kaikyo Bridge Center, the Sun Yat-sen Memorial Hall, and other facilities nearby, or a peaceful time at Maiko Park.

Maiko Marine Promenade

Website: <https://hyogo-maikopark.jp/en/>
Tel: 078-785-5090

Hours: 9:00-18:00 (for gate closing, 17:30)
(Open until 19:00 during spring and summer holidays)

Apr. - Sept.: Open everyday

Oct. - Mar.: Closed on the 2nd Monday of the month, 12/29-31

Admission: Adults ¥250 (Weekdays) ¥300 (Weekends)
Seniors (+70) ¥100 (Weekdays) ¥150 (Weekends)
High School students and under are free

Access: 5 minutes walk from JR Maiko station
or Sanyo Maiko Koen station.



Tetsujin 28-go



©HIKARI PRODUCTION/KOBE TETSUJIN PROJECT 2011

Website: <https://www.kobe-tetsujin.com/>
Access: 5 minutes walk from JR Shin-Nagata Station.



Kobe Suma Sea World



Kobe Suma Sea World is an "edutainment aquarium" that blends learning and play. It features the only orca performance in Western Japan, along with the world's first educational zone dedicated to orcas, called "Orca Lab," and exhibits that recreate the original landscape of the Seto Inland Sea. It's an aquarium where both adults and children can enjoy learning while having fun.

Website: <https://www.kobesuma-seaworld.jp/en/>

Tel: 078-731-7301

Hours: 10:00-18:00 (subject to change depending on the season)

Dates closed: Irregular holidays

Admission: Adults (high school age and older) ¥3,100

Children (elementary and middle school) ¥1,800

Children (Ages 4-6) ¥1,800

*Prices may vary depending on the season.

Access: 5 minutes walk from JR "Suma Kaihinkoen" Station
10 minutes from Sanyo Electric Railway
"Tsukimiyama" Station



Nesta Resort Kobe



NESTA Resort Kobe offers a wide range of year-round facilities, including hotels, glamping cabins, a barbecue park, an illumination area, and a pool, all set within vast natural surroundings and featuring cutting-edge activities to ensure a fun and memorable experience for visitors.

Website: <https://nesta.co.jp/en/>

Nesta Resort Kobe

* Hotel The Pavone

* Water Fort (Pool)

* Glamp (Glamorous Camp) BBQ Park/Glamp Cabin

Tel: 0570-00-5000

Access: It is approx. 40 minutes from JR Sannomiyastation.
(Shinkai Bus Sannomiya Bus Terminal)
to Nesta Resort Kobe.



Hanshin An Area of History and Culture

The Hanshin area, located between Kobe and Osaka, is a treasure trove of history and culture. Among its highlights is Koshien Stadium in Nishinomiya, considered a sacred place for baseball fans. With many attractions and relaxing spots, it's the perfect place to enjoy a leisurely walk.

Takarazuka Revue



Since its first show in April of 1914, Takarazuka has always been loved and admired by many. Its biggest attraction is the elegant and dreamy shows of all-female cast. It is rare for such a big group to do revues and shows so often, and the fact that they do all types of genres makes them one of a kind.

Website: <https://kageki.hankyu.co.jp/english/index.html>

Tel: 0570-00-5100

Access: 5 minutes walk from JR or Hankyu Takarazuka station.



THE OSAMU TEZUKA MANGA MUSEUM



This memorial museum is dedicated to the god of Japanese Manga, Osamu Tezuka. He is the creator of famous Astro Boy and Jungle Taitei and so on. Memorabilia, such as Tezuka's handwritten works and first editions, are on display. Anime workshops are also available to let visitors experience creating anime.

Website: <https://www.city.takarazuka.hyo.go.jp.e.pc.hp.transer.com/tezuka/>

Tel: 0797-81-2970

Hours: 9:30-17:00 (Last admission 16:30)

Dates closed: Monday, 12/29-31
(Open during holidays and school holidays)

Admission: Adults ¥700,
Junior/High School Students ¥300,
Elementary School Students ¥100

Access: 8 minutes walk from JR/Hankyu Takarazuka station,
or 5 minutes walk
from Hankyu Takarazuka Minamiguchi station.



Museum of Hanshin Koshien Stadium



A museum dedicated to preserving the history of Hanshin Koshien Stadium, which has stood for over 100 years, along with the drama-filled spring and summer high school baseball tournaments and the legacy of the Hanshin Tigers. Through exhibits and videos, you can experience the excitement and greatness of baseball.



Website: <https://koshien-rekishikan.hanshin.co.jp/global/en/>

Tel: 0798-49-4506

Hours: 10:00-18:00 (10:00-17:00 from November to February)

*Last entry is 30 minutes before closing time.

*Hours may vary depending on events.

Dates closed: Monday (excluding game days and public holidays),
New Year's holidays

*The museum may be closed temporarily for
maintenance or other reasons.

Admission: Adult ¥900, High school student ¥700, Child ¥500

Access: 7 minutes walk from Hanshin Koshien Station



Nishinomiya Shrine



The head shrine of Ebisu Shrines nationwide. Ebisu-sama is revered as the god of bountiful fishing and prosperity in business. During the annual Toka Ebisu Festival, held from January 9 to 11, over 1 million visitors come from across the country. On the morning of January 10, the "Kaimon Shingi Fuku-otoko Selection" takes place, where participants run from the front gate to the main hall at 6:00 AM. The first three people to arrive are designated as the "Fuku-otoko" or "lucky men".

Website: <https://www.nishinomiya-ebisu.com/>

Tel: 0798-33-3221

Hours: April–August: 5:00-19:00,
October–February: 5:00-18:30,
September and March: 5:00-18:00

Gift shop hours: 9:00-17:00

Access: 5 minutes walk from Hanshin Nishinomiya station





Harima

MAP P34

MAP P35

Immerse yourself in Japan's history



Website:
<https://www.city.himeji.lg.jp/castle/>



Himeji

In the old days, Himeji was situated as an important site for transportation, and it was the center for politics, economy, and culture for the Harima region. The importance of the city can be seen from historical assets like Himeji Castle and Engyo-ji Temple on Mt. Shosha.

Himeji Castle

Himeji Castle was the first Japanese site to be registered as a UNESCO World Heritage site in 1993. Qualities such as the unique structure of the castle and the beauty of its white plastered walls earned it the nickname White Heron Castle. Its well-preserved towers and the structures surrounding the castle have mainly kept their original form, and have helped the castle earn its excellent reputation. It has been about 400 years since the castle was first built, and it is a storehouse of numerous national treasures and important cultural properties.

Koko-en



A traditional Japanese garden with an area of over eight acres, Koko-en is built around a large pond, and includes a restaurant Kassui-ken where guests can enjoy lunch, as well as Soju-an where traditional Japanese green tea is served.

Website: <https://himeji-machishin.jp/ryokka/kokoen/en/index.php>

Tel: 079-289-4120

Hours: 9:00-17:00, Jun-Sep: 9:00-18:00

Dates closed: 12/29, 12/30.

Admission: Adults ¥310,

High School Students and younger ¥150

Access: 15 minutes walk from JR/Sanyo Himeji station.



Engyo-ji



Located 371 meters above sea level on top of Mt. Shosha in western Himeji, Engyo-ji is home to many Important Cultural Properties. Maniden, a beautiful wooden hall, Daikodo (main hall), Jikido (lodging and dining hall, now exhibiting temple treasures) and Jogyodo (gymnasium) are especially popular.

Website: http://www.shosha.or.jp/_en/

Tel: 079-266-3327

Hours: 8:30-17:00 Open year-round

Admission: Adults ¥500

Elementary School Students ¥300

Infants are free

Access: Take the Shinkai Bus for the Shosha Ropeway from JR/Sanyo Himeji station, and get off at the last stop.



Kirakira-zaka



Kirakira-zaka is a slope that connects Iwatsuhime Shrine to the Seto Inland Sea. Along the path, you'll find cafes, gelato shops, and glass workshops, making it an ideal spot for a leisurely stroll. The sea breeze and the view offer a relaxing experience.

Website: <https://platinumaps.jp/d/ako?culture=ja&spot=244247>

Access: By train: Take the bus bound for "Kame no i Hotell Akō" from JR Banshu-Akō Station and get off at "Misaki," then walk about 2 minutes.

By car: Approximately 20 minutes from the Sanyo Expressway Akō IC.



Hyogo Prefectural Museum of History



The museum showcases the history of Hyogo, folk performing arts, children's culture and Himeji Castle and its castle town through a virtual theatre. People chosen by drawing can experience wearing a traditional Japanese kimono and armor.

Website: <https://rekihaku.pref.hyogo.lg.jp/en/>
Tel: 079-288-9011

Hours: 10:00-17:00 (Last entry 16:30)

Dates closed: Mondays

(The following day when Mondays falls on a national holiday)

Admission: First floor is free, Second Floor: Adults ¥200
College Students ¥150
High School students /under are free,
Senior (+¥70) ¥100

Access: Take the Himeji Castle Loop Bus from Himeji station to Hakubutsukan-mae. (8 minutes)
Take the Shinki bus from Himeji station to Hakubutsukan-mae. (8 minutes)



Uo-no-tana Street Market



Known locally as "Uontana," this street market, which dates back around 400 years to the time of the construction of Akashi Castle, is a beloved area. Along with fresh seafood stores offering Akashi-dai (sea bream) and Akashi-dako (octopus), there are about 100 shops, including Akashi-yaki restaurants and souvenir stores, making it a great spot for food lovers to explore and sample local delicacies.

Website: <https://www.uonotana.or.jp/>
Tel: 080-4647-9666 (Uo-no-tana Street Market Office)

Hours: Vary by store

Dates Closed: Vary by store

Access: 3 minutes walk from JR/Sanyo Akashi station



Japan Toy Museum



The museum displays Japanese folk toys, modern toys and traditional dolls, as well as toys and dolls from some 160 countries around the world. Visitors can touch and play with some of the toys.

Website: <https://japan-toy-museum.org/>

Tel: 079-232-4388

Hours: 10:00-17:00

Dates Closed: Wednesdays, except for national holidays. Also closed 12/28 to 1/3

Admission: Adult ¥600, high school / college students ¥400, children (+¥4) ¥200.

Access: From JR Himeji station, take the Bantan line 5 stations (about 15 minutes) to Kohro. Walk east 14 minutes



Hojo Railway



The Hojo Railway is a local railway connecting Hojo-cho Station in Kasai City, Hyogo Prefecture, to Ao Station in the neighboring city of Ono, covering a one-way distance of 13.6 km (with a travel time of 23 minutes). The route was originally opened by Banshu Railway Co., Ltd. in 1913, and was extended to Ao Station by 1915. After being nationalized in 1943, it was rebranded as Hojo Railway Co., Ltd. in 1985 following the closure of the nationalized Hojo Line. It offers passengers a chance to enjoy a leisurely journey, with a nostalgic scenery of old unmanned stations and rural landscapes.

Website: <http://www.hojorailway.jp/>

Tel: 0790-42-0036

Hours: 8:00-19:00

Admission: One-way: ¥420 (Hojo-cho to Ao), 1-day pass: ¥1,000

Access: Kobe Electric Railway: 1 hour 50 minutes from Kobe Sannomiya to Hojo-cho
JR: 1 hour 30 minutes from Sannomiya to Hojo-cho
Highway Bus: 1 hour 10 minutes from Shinkai Bus Kobe Sannomiya Bus Terminal to Hojo



Takasago Walk

Takasago, a port town once visited by the Kitamae ships (trading vessels that sailed between Japan's main island and the northern regions), is known as the "Town of Unions" due to its many legends of marital harmony. Stroll through Takasago and experience the town's preserved layout from the Edo period (1603-1868), offering a glimpse into the past.



The Former Residence of Kuraku Matsuemon



A typical merchant house built during the late Edo period (1603-1867). The Matsuemon sail, invented by Kuraku Matsuemon, was made from durable and flexible cotton fabric, significantly enhancing the performance of ships.

Website: <https://kurakutei.wixsite.com/kuraku>

Tel: 079-490-4790

Hours: 10:00-17:00

Date closed: Tuesdays / 12/29 - 1/3

Admission: Free

Access: 15 minutes walk from Sanyo Takasago station



Takasago Shrine



Takasago Shrine is considered the setting for *Takasago*, a play from the traditional performing art of Noh, which has been recognized as a UNESCO Intangible Cultural Heritage.

Website: <https://takasagojinja.takara-bune.net/>

Tel: 079-442-0160

Hours: 9:00-18:00 (Issuance of Goshuin and other services available from 9:00-16:00)

Access: 20 minutes walk from Sanyo Takasago station



Jyurinji



A Jodo-shu Buddhist temple, believed to have been founded by Kukai. This large temple complex attracts many visitors.

Tel: 079-442-0242

Access: 10 minutes walk from Sanyo Takasago station

Umegaeyu



In the 1950s, there were as many as seven public baths in the area, but today, Umegaeyu is the only one still in operation. The building's exterior and interior maintain the atmosphere of the Showa era (1926-1989), and firewood is still used to heat the water.

Tel: 079-442-0985

Hours: 15:30-23:00

Date closed: Thursdays

Admission: Adult ¥450, Middle school students ¥160, Children ¥60

Access: 10 minutes walk from Sanyo Takasago station

Filming locations for movies.



[Norwegian Wood] (2010)

Filming Locations: Tonomine Highlands and Mineyama Highlands in Kamikawa town, and Imagoura Senjojiki in Kasumi town

With over 10 million copies sold, and translated into 33 different languages, novelist Haruki Murakami's best-selling novel Norwegian Wood was made into a movie. The beautiful scenes have earned great acclaim at Mostra Internazionale d'Arte Cinematografica. In the novel, the main character spent his high school days in Hyogo, and in the movie, places such as the Senjo-jiki structure of Imagoura Coast in Kasumi town, schools in Kobe city, and other areas were used for filming. The scene with the field filled with silver grass was filmed at Tonomine and Mineyama Highlands in Kamikawa town, and is one of the most important scenes from the movie.

For those of you who enjoy Murakami's work, come and visit his hometown. Grab his other popular book, Henkyo/Kinkyō and follow the footstep of this great novelist.

Haruki Murakami

Haruki Murakami grew up in Ashiya city in Hyogo prefecture until he went to college. In one of his books, he mentioned that his hometown "was a comfortable place to spend childhood days."

Debuting in 1979 with his first novel, Hear the Wind Sing, he has authored many best-selling novels. In 2005, Kafka on the Shore was chosen as one of New York Times' ten best books of the year, and he became internationally known. In 2010, he was nominated for the Nobel Prize for Literature.



Starring: Kenichi Matsuyama, Rinko Kikuchi
Director: Tran Anh Hung

[The Last Samurai] (2003)

Filming Location: Engyo-ji Temple on Mt. Shosha in Himeji

The film was created with the cooperation of three countries, the U.S., New Zealand, and Japan. The story takes place in the 1800s, and is about an American captain that comes to Japan and learns the ways of the samurai. Many of the scenes were filmed in Engyoji Temple on Mt. Shosha. The Daikodo (main hall), Jikido (lodging and dining hall, now exhibiting temple treasures) and Jogyodo (gymnasium) were used, giving the film a solemn and authentic feel. The scene with Tom Cruise and Ken Watanabe talking under the cherry trees in full bloom was filmed at the grave of the former lords that owned Himeji Castle. The room that Tom Cruise was using is now a tea shop that serves green tea and Japanese sweets.



Starring: Tom Cruise, Ken Watanabe
Director: Edward Zwick

[007: You Only Live Twice] (1967)

The filming was done in many popular tourist locations across Japan. Himeji Castle was used as a training ground for ninjas in the film. Himeji Castle has also been used for other films such as Kagemusha and Ran (1985) by Akira Kurosawa, and the TV series Shogun (1980) starring Richard Chamberlain.

Filming Location: Himeji Castle, Port of Kobe
Starring: Sean Connery, Donald Pleasence
Director: Lewis Gilbert

["Haruhi Suzumiya" Series] (2003)

This is a popular novel by Nagaru Tanigawa. Tanigawa's hometown of Nishinomiya is used as a model for the city where sets the story. The novel about high school students and their unusual school life became a huge hit, and it was made into a TV animation series, a comic, and a video game. Trains on the Hankyu Line, Shukugawa Station, Nishinomiya Kita-guchi Station, and popular Kobe sweets "Gaufre" are some of the Hyogo related things that appear in the series.

Location: Nishinomiya city



Tajima

Just a little further away.

MAP P34

MAP P36

Izushi



Known as the Little Kyoto of Hyogo, Izushi preserves its history and is designated as an Important Preservation District. Symbolic Shinkoro, Samurai Residences and Izushi Castle Ruins are must-see buildings in the town. For a local specialty, handmade Izushi soba Noodles are a standout option.

Website: <https://www.izushi.co.jp/en/>



San'in Kaigan UNESCO Global Geopark



This natural park has rare geological and geographical features. San'in Kaigan Geopark is now a member of Global Geoparks

Network, and the museum offers a variety of displays and hands on activities.

Website: <https://sanin-geo.jp/english/>

Tel: 0796-82-5222

Hours: 9:00-17:00 Closed on Tuesdays. Free entry.

Access: 20 minutes walk from JR Hamasaka station.



Hyogo Park of the Oriental White Stork



Japan's special natural monument, Oriental White Storks are protected, bred, and returned to its natural habitat here.

Website: <https://satokouen.jp/en/>

Tel: 0796-23-5666

Hours: 9:00-17:00 Closed on Mondays and 12/28-1/4. Free Entry.

Access: Take the Zentan Bus from Toyooka station to Konotori-no Sato-koen (15 minutes.)



Takeda Castle Ruins



The ruins of Takeda Castle are known as the "Castle in the Sky." As the name suggests, on clear autumn mornings, this site is enveloped in thick white mist. The only thing visible through the mist is the castle ruins, which appear to be floating above a sea of clouds in the sky. The stone walls within the ruins have stood for over 400 years.

Website: <https://www.city.asago.hyogo.jp/site/takeda/>



Kinosaki The Town of Onsen and Yukata

Kinosaki is a historical hot spring town, famous for the seven hot springs in the area. Called Sotoyu-meguri, visiting these seven hot springs is a popular activity. With beaches in the summer, and delicious crab in the winter, Kinosaki receives quite a few tourists throughout the year.



Kinosaki Onsen

Wear a yukata and go hot-spring hopping

Seven unique hot springs are dispersed throughout town and are all within walking distance of one another.

Website: <https://visitkinosaki.com/about-kinosaki/the-7-mystic-onsen/>



Kiyamachi-Koji



This shopping complex is composed of ten stores and restaurants serving sweets and a relaxation facility. All ten stores have unique characteristics that will be sure to entertain you.

Tel: 0796-32-4411

Access: 10 minutes walk from JR Kinosaki Onsen station.

(Fish Market)

Okesho Sengyo & Dining Room Kaichuen



Kaisen-don (seafood on rice) with eleven different kinds of seafood ¥1,890

The first floor is a fresh seafood market where you can purchase Matsuba crab, freshly caught fish, and souvenirs. The second floor is a restaurant where you can have some of the best tasting seafood in Japan.

Website: <https://www.okesyo.com/02kaichu/eng01.html>

Tel: 0796-29-4832

Hours: 11:00-18:45 (Flagship restaurant)
Closed on New Year's holidays.

Access: 3 minutes walk from JR Kinosaki Onsen station.



Kinosaki Onsen Ropeway



Enjoy the greenery of spring and summer, leaves changing color in fall, and a snow covered landscape in winter. Enjoy the view of the Sea of Japan and the Maruyama River from the top of the mountain.

Website: <https://kinosaki-ropeway.jp/>
Tel: 0796-32-2530

Hours: 9:10-17:10 (Last car leaves at 16:50)

Date closed: Every 2nd & 4th Thursday

Round ticket: Adults (Junior High School and older) ¥1200,
Children (+6) ¥600

Access: 20 minutes walk from JR Kinosaki Onsen station.





Tamba

The Bounty of Nature

MAP P34

MAP P36

Tamba-Sasayama region is known for its elegance. Located close to Kyoto, the area developed a long time ago. With many samurai and merchant houses still standing, the castle-town of Sasayama has historic remnants. Tamba ware is one of the six oldest potteries in Japan, and it has over 800 years of history. It is a popular souvenir from the area. This region is nationally famous for botan-nabe, a hotpot with locally caught boar meat cooked in miso soy bean paste. Also popular are chestnuts, matsutake-mushrooms, and black beans.

Tachikui Sue-no-Sato

(Tachikui Pottery Village)



Experience hands on pottery workshops with an exciting variety of making techniques.



Website: <https://tanbayaki.com/>
Tel: 079-597-2034

Hours: 10:00-17:00

Dates closed: 12/29 - 1/1

Admission: High School Students and older ¥200, Junior High School Students and younger ¥50

Access: Catch the Shinki Green Bus headed for Shimizu or The museum of Ceramic Art, Hyogo for 10 minutes from JR Aino station. Get off at Sue-no-Sato-mae.



Sasayama Castle Oshoin



Splendid wooden building reconstructed on the Sasayama Castle Ruins.



Website: <https://tourism.sasayama.jp/ohshoin/>
Tel: 079-552-4500

Hours: 9:00-17:00 (Last entry 16:30)

Dates Closed: Mondays, 12/25-1/1

Admission: Adults ¥400, High school /

College students ¥200,

Elementary / junior high school students ¥100 (Group of 30 or more: discounts available)

Four-Facility Pass (Sasayama Castle Oshoin, Aoyama History Village, Anma Family Samurai Residence Museum, and Sasayama Historical Art Museum): Adults ¥600,

High school and college students ¥300,

Elementary / Junior High School

Students ¥150

Access: Take the Shinki Green Bus

Sasayama-Eigyosho from JR Sasayama-guchi station for 15 minutes.

Get off at the Nikaimachi bus stop and walk for 5 minutes.

Museum of Noh Artifacts



Noh masks and costumes used in traditional Japanese Noh dance are on display.



Website: <https://nohgakushiryokan.jp/english/>

Tel: 079-552-3513

Hours: 10:00-16:30

Dates closed: Mondays (The following day when Mondays falls on a national holiday) holidays. 8/1-8/31, 12/25-2/28.

Admission: Adults ¥700, High school students and older ¥400, junior high school students and younger ¥200

Access: 20 minutes by Shinki Green Bus from JR Sasayama-guchi station to Hon-Sasayama.

JA Tamba Sasayama Restaurant & Store



The Tamba-Sasayama region's specialties can be found in this one location.



Website: <https://www.tokusankansasayama.com/>

contents shop and restaurant

Tel: 079-552-3386

Hours: 10:00-17:00

Restaurant Weekdays: 11:00-16:30 (L.O.16:00),

Weekends and holidays: 11:00-17:00 (L.O.16:30)

Dates Closed: Wednesdays

Access: 15 minutes by Shinki Green Bus from JR Sasayamaguchi station to Kasugajinja-mae or Rekishi Bijyutsukan-mae.



Enjoy great tasting sweets made from black beans, Tamba Dainagon beans, chestnuts, and other foods taken from the fruit park in Tamba. Visitors can also participate in harvesting the fruit.

The Museum of Ceramic Art, Hyogo



Museum with a wide range of Hyogo ceramics, mainly Tamba and Izushi style potteries, are on display.

Website: <https://www.mcart.jp/english/>

Tel: 079-597-3961

Hours: 10:00-17:00 (Last entry 16:30)

Dates Closed: Mondays, 12/31 - 1/1

Admission: Varies depending on the exhibition content, High School Students and younger free

Access: Take the Shinkai Green Bus headed for Shimizu from JR Aino station.

Get off at the Hyogo-Tougei-Bijyutsu-Kan.



Tamba Obaachan no Sato



Located 90 minutes by car from Osaka, Kobe, and Kyoto, the roadside station in Tamba City offers a variety of fresh local specialties and products, all nurtured by the rich natural landscape of Tamba, where you can enjoy Japan's traditional countryside.

Website: <https://tamba-obasato.co.jp/>

Tel: 0795-70-3001

Hours: 9:00-17:00

Dates Closed: None (Maintenance closure in January)

Access: Just off the Kasuga IC exit on the Maizuru-Wakasa Expressway and the Kita-Kinki Toyouka Expressway



Nishiyama Sake Brewery



Founded in 1849, this historic sake brewery is surrounded by rich nature. It has strong ties with cultural figures, and its signature brand "Kotsuzumi" was named by the haiku poet, Takahama Kyoshi. In 2024, it opened "Koden," a complex facility dedicated to sake, fermentation, and the arts. Visitors can experience traditional sake brewing and art through activities such as tasting the brewery's workers' meals, enjoying sake tastings, and appreciating paintings and haiku.

Website: <https://kotsuzumi.co.jp/en/>

Tel: 0795-86-0331

Hours: Brewery shop: 9:00-17:00

Sake, fermentation, and arts complex "Koden": 10:00-17:00

Dates Closed: Brewery shop : New Year's holiday
Sake, fermentation, and arts complex "Koden": Closed on Tuesdays; year-end/new year holidays

Access: By car: About 15 minutes from Kasuga IC on the Maizuru-Wakasa Expressway
By train: Approximately 10 minutes on foot from JR Fukuchiyama Line, Tamba-Takeda Station





Awaji

The Birth of Japan Started
from Awaji Island

MAP P34

MAP P37

Awaji, the first island to be formed according to the creation myth of Japan, is located about an hour drive from Kobe. It is a popular island-resort, where you can find abundant nature, delicious food from both the land and the sea, and hot springs.

Awaji Yumebutai



With over 70 acres of land, this park includes large conference halls, a resort hotel, an outdoor theater, a botanical garden, and other facilities. Originally, land from this area was taken to build Kansai International Airport, but the famous architect, Tadao Ando, wanted to rebuild the area with the concept of harmony between humans and nature. His unique concrete-based buildings match perfectly with the recovering nature.

Website: <https://www.yumebutai.co.jp/lang/en.html>

Tel: 0799-74-1000

Access: A 1 hour ride on JR Bus/

Honshi-Kaikyo Bus from Sannomiya station.

Get off at the Awaji Yumebutai-mae bus stop.



Awaji Ningyo-za puppet theatre Backstage Tour



The Awaji Puppet Joruri is a puppet performance that developed from Shinto rituals. This aspect of popular culture is deeply rooted on Awaji Island and has a long history of Approx. 500 years. Each group of

three people operates one puppet, and it would not be an exaggeration to say that the plays, passed down for generations and enacted with great elegance, convey the essence of Japan's proud performing arts. The puppets, appearing even more alive than humans, express emotional drama that invites spectators into a world of dreams. Performance with backstage tour is held a couple times a day. Please check the schedule on the website!

Website: <https://awajiningyoza.com/en>

Tel: 0799-52-0260

Dates Closed: Wednesdays

Regular Performance: 10:00, 11:10, 13:30, 15:00

Admission: Adults ¥1,800, High school / Junior high school students ¥1,300, Elementary school students ¥1,000, Children (+3) ¥300

Access: 90 minutes from Sannomiya bus Terminal (Bus), 80 minutes from Kobe (Car)



Izanagi Shrine



Izanami and Izanagi, the creators of Japan, are enshrined at this ancient shrine. It is said to bring luck to marriage and longevity.

Website: <https://kuniuiminoshima.jp/>

Tel: 0799-80-5001

Access: Take Awaji Kotsu express bus from Sannomiya

to Tsuna

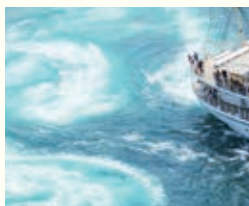
Kou and change to the Awaji Kotsu bus

Nishiura Line.

5 minutes ride to Izanagi Jingu-mae bus stop.



The Great NARUTO UZUSHIO Whirlpools Cruise Tour



"Uzushio" is a rare natural phenomenon caused by the tide rushing through the extremely narrow Naruto Strait between Awaji Island and Shikoku. The moon's tidal force causes these whirlpools, which

means that especially large ones can be seen around the times of the new and full moons. These whirlpools are one of the largest in the world, with it becomes approximately 30 meters in diameters. From Port Fukura of Minami Awaji City, you can join the "Uzushio Cruise" whirlpools observation cruise tour throughout a year! The newly built "Kanrin-Marui" is one of the largest sailing pleasure ships in Japan. Enjoy a live guide (in Japanese) by the onboard guide.

Website: <https://www.uzu-shio.com/>

Tel: 0799-52-0054

Hours: 9:00-17:00

Admission: Adults ¥2,500,

Elementary school children ¥1,000, Preschool-age FREE

Access: 90 minutes from Sannomiya bus Terminal (Bus), 80 minutes from Kobe. (Car)



Awaji Island West Coast



©Pasona Group



NIJIGEN NO MORI

NIJIGEN NO MORI is an anime-themed Park in which you can experience 2-dimensional popular Japanese anime and game contents in real life, surrounded by the beautiful nature of Awaji Island and digital art elements. Experience these in addition to a variety of other facilities along the Awaji West Coast!

Website: <https://nijigennomori.com/en/>



Zenbo Seinei

Since 2008, Pasona Group has established a variety of facilities and events making use of local resources to boost tourism from Awaji Island.

Zenbo Seinei is the latest facility in which you can rebalance both mind and body through Zen experiences such as meditation and monk-inspired Zenbo Cuisine regardless of your religion.

Website: <https://zenbo-seinei.com/en/>



Awaji Island Monkey Center



The Awaji Island Monkey Center is a facility where you can interact with wild monkeys in their natural environment. The monkeys here are much more calm compared to those in other

regions, and they have good relationships with one another, exhibiting a high level of tolerance. The best time to visit is from December to around August, when you can see many of the monkeys.

Website: <https://monkey-center.jp/english.php>

Tel: 0799-29-0112

Hours: 9:30-17:00 (Note: Hours may vary by season)

Dates Closed: Wednesdays and Thursdays

Admission: Adults (middle school age and older): ¥1,000

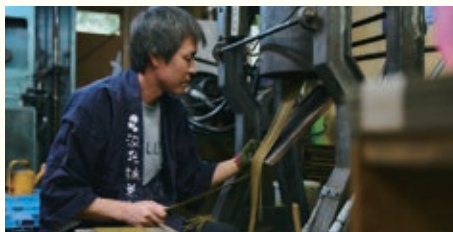
Children (+4): ¥400

Access: By car: From Kobe: 45 minutes from Sumoto IC
From Tokushima: 55 minutes from Awaji Island South IC

By bus: From Sumoto Bus Center,
take the "Uenada-Nushima Line Community Bus"
and get off at the Monkey Center (about 50 minutes)



Awaji Baikundo



Founded in 1905, this long-established company has been preserving the traditional craft of incense making. At the factory, you can watch skilled artisans, using

time-honored techniques, handcraft the incense. Additionally, you can choose your favorite scent and create your very own original incense to take home.

Website: <https://www.awaji-baikundo.com/>

Tel: 0799-86-0065

Hours: 9:00-12:00, 13:00-16:00

Dates Closed: 2nd and 4th Saturdays, Sundays,
public holidays, Obon, and New Year holidays

Admission: Incense-making experience: ¥6,000

Incense craftsman experience: ¥6,000

Scented pouch-making experience: ¥6,000

Access: About 15 minutes by car from Tsuna Ichinomiya IC



Japan Heritage

The legacies that represent unique regional histories, traditions and customs, preserved in the form of “stories,” have served to pass down Japan’s culture and tradition and are recognized by the Agency for Cultural Affairs as “Japan Heritage.”

This system aims to promote regional revitalization by supporting each region's independent efforts to maintain and utilize the entirety of various attractive cultural assets that comprise the abovementioned stories, and strategically publicize them widely in Japan and around the world.

Dekansho-bushi in Tamba-Sasayama

hometown memories passed down in folk songs
[Tamba-Sasayama City] / Designated in 2015



Tamba-Sasayama once flourished as a castle town. The dekansho-bushi is the folk song deriving from a local folk song sung in that region during the Edo Period (1603-1868), and its lyrics have conveyed the local climate and culture,

human nature, famous sights, and culinary specialties of each area and of the times. People here have sung the dekansho-bushi for generations, treasuring the landscapes of their villages and enhancing their affection for their hometown. To this day, local people have continued to create new lyrics to pass down new traditions on to the next generation. Through the dekansho-bushi (which has grown to over 300 verses long), we can experience the traditions of Tamba-Sasayama, as well as its streetscapes of rows of old houses and charming paths.

Awaji Island: creation of Japan’s first island and the people of the sea

[Awaji City, Sumoto City, Minami-Awaji City]
Designated in 2016



The *Kojiki* (“Records of Ancient Matters”), Japan’s oldest existing written record of its history, begins with the country’s creation myth. According to this, Awaji Island was the first island that was created in Japan. What lies beneath

this story is the existence of the Ama (“people of the sea”), who created a new era and supported the government, provincial kings and people in the capital in Japan’s Kansai region by introducing metal tools, salt-making techniques and advanced navigation skills. Awaji Island, the largest island in the Seto Inland Sea, represents the history of the Ama who played a central role in the formation of ancient Japan.

The Gin-no-Bashamichi and the Koseki-no-Michi

Old Silver Mine Carriage Road and Road of Ore

a 73 km track that supported the resource-rich country
[Himeji City, Fukusaki Town, Ichikawa Town, Kamikawa Town, Asago City, Yabu City] / Designated in 2017



The Gin-no-Bashamichi is a straight track in the Bantan region in the center of Hyogo, stretching from south to north to connect Shikama Port in Himeji and the Ikuno Silver Mine. The Koseki-no-Michi further stretches to the Akenobe

and Nakaze Mines. The 73 kilometer track runs through old station towns retaining its atmosphere from the Meiji Era (1868-1912), leads to mine towns, and finally reaches the quiet tunnels of each mine. These mines are the starting point of Japan’s modernization and the terminal of this track. Visitors will be able to see the quaint landscape of mine towns and the history of local lifestyles while imagining mineral-rich old Japan.

Six Ancient Kilns

home of pottery born and developed in Japan
[Tamba-Sasayama City and others] / Designated in 2017



The Six Ancient Kilns are Japan’s six most noteworthy pottery sites of old: Tamba, Seto, Tokoname, Shigaraki, Bizen and Echizen. At these kilns, traditional techniques that Japan boasts to the world and date back to the

prehistoric Jomon period have been preserved. These are the 100% Japanese pottery production sites, born and developed in Japan. People have been engaged in the production of pottery in these areas since medieval times, and there are maze-like alleys that lead to kiln sites and studios of various sizes. While walking along the walls, led on by the smoke from chimneys as though you are searching for a lover, you will find yourself in the world of traditional Japanese beauty that cherishes simplicity and nature.

Hot Springs in Hyogo

Some of the best onsen in the prefecture.



1

Arima Onsen

Along with Dogo Onsen and Shirahama Onsen, Arima Onsen is one of the three oldest in Japan, with over 1400 years of history. It is located on the northern part of Mt. Rokko.



2

Kinosaki Onsen

Taste seasonal delicacies along with delicious seafood at Kinosaki Onsen. Going on a sotoyu-meguri (visiting seven different hot springs) in a yukata and geta sandals is a traditional way to enjoy Kinosaki.



3

Yumura Onsen

With over 1,000 years of history, this quiet hot spring nestled in the mountains is loved by many. The hottest spring reaches 98°C, which is hot enough to boil an egg.



4

Takarazuka Onsen

This 700 year-old hot springs has been popular since the Kamakura period. Conveniently located close to Kobe and Osaka, it stands right next to the famous Takarazuka Grand Theater.



5

Shiota Onsen

Famous for the captivating view of Seppiko Mountain from the hot springs, it is also called Harima's getaway, and attracts a number of visitors.



6

Ako Onsen

It is famous for its stunning view overlooking the Seto Inland Sea. The hot springs is also called "the Hot Spring of Youth" because it is said to be beneficial for your bones, muscles, and skin.



7

Sumoto Onsen

It is located in a historical castle-town along the coast of Sumoto. The largest hot spring town on Awaji Island, it is considered to be a resort-hot springs.

Japanese Food

Enjoy seasonal fresh food from both the sea and the mountains.

Japanese cuisine puts an emphasis on using the best-tasting seasonal food, and is cooked in broth taken from bonito or kelp, with salt, soy sauce, or miso soy bean paste, to add flavor. Dishes are low in calories, finely refined, and come in many different forms. Hyogo prefecture is surrounded by both the mountains and the sea, offering variety of ingredients to choose from. For meat, there is Kobe Beef, boar meat, as well as seafood like crab, snapper, oysters, and octopus. Fresh fruit and vegetables are also widely available. Noodles like Izushi soba, made from buckwheat, and Ibo-no-ito somen, or rice-noodles, are also very popular.



Hyogo Specialties



Crabs

Tajima produces the largest catch of Matsuba crabs in all of Japan. Matsuba crabs are known for their texture and sweet flavor.



Seabreams

An abundant food source and a strong current produce meaty, flavorful, top-quality Seabreams.



Oysters

Harima-nada in Hyogo has the perfect water for oysters to live in, producing large, delicious oysters.



Octopuses

The Strait of Akashi, with one of the longest suspension bridge in the world, is also famous for great-tasting octopuses. They are served in many ways such as sashimi, shabu-shabu and simply boiled.

Dining in Hyogo

Nishimuraya Wamisyunsai



Please enjoy the health-conscious seasonal Japanese cuisine that "Nishimuraya" is known for, featuring crab dishes and fresh morning-picked vegetables sourced from organic farms near Kobe City. Embrace the hospitality such as "Omotenashi" passed down through generations at "Kinosaki-Nishimuraya" and relax in a space of healing and tranquility.

Website: <https://www.nishimuraya-fc.com/restaurants/wamishunsai/>

Tel: 078-232-3663

Hours: Lunch 11:30-15:00 (L.O.14:00)

Dinner 17:00-21:30 (L.O.20:30)

Dates closed: April~Oct. on Tuesday and Wednesday except on national holiday and Dec. 30th, 31th

Access: 5 minutes walk from JR/Hankyu/Hanshin/Subway Sannomiya station.



All-You-Can-Eat seafood buffet Fisherman's Market Kobe Mosaic



Over 90 dishes using mainly seafood are made in an open-kitchen and served in all-you-can-eat style. With a fantastic view of the Port of Kobe and Meriken Park, it's a perfect place to enjoy both lunch and dinner.

Website: <https://shop.create-restaurants.co.jp/1158/>

Tel: 078-360-3695

Hours: 11:00-22:00 Last entry 21:00 (L.O.21:30) Open year-round

Access: 8 minutes walk from JR Kobe station.



EKIZO Kobe Sannomiya



Located beneath the Kobe Sannomiya Hankyu Building, 'EKIZO Kobe Sannomiya' opened in April 2021. This area is often referred to as a 'gourmet street,' where traditional long-established and popular stores from Kobe and the Kansai region gather, encapsulating the charm of Kobe. The gourmet street is directly connected to Hankyu Kobe Sannomiya Station, making it very convenient to access.

Website: <https://ekizo.hankyu.co.jp/>

Access: Just a short walk from Hankyu Sannomiya Station



Local Dishes of Hyogo

Akashi-yaki



Akashi-yaki is a famous local dish from Akashi city in Hyogo. Softer than takoyaki, they are dipped in broth instead of covered with sauce.

Venue: Shopping arcades such as Uo-no-tana located south of Akashi station.

Soba-meshi



Soba-meshi is fried rice flavored with sauce and mixed with yakisoba noodles. It is a very popular B-class gourmet in Nagata ward of Kobe city.

Access: South of Shin-Nagata station.

Katsumeshi



Katsumeshi is a dish with beef cutlet on top of rice with demi - glace sauce on top. You can try Katsumeshi in Kakogawa city in Hyogo.

Access: Kakogawa station

Sake

Japanese Sake: Refined over its long history



Japanese sake has a history of about 2,000 years. Sake from Hyogo has always been considered to be one of the very best in the country, especially the varieties made in Nada Gogo area. This area has the following qualities that allow them for the production of great tasting sake.

- ① Miyamizu water from Mt. Rokko is ideal water for creating sake.
- ② Local large and high-quality rice is perfect for sake brewing.
- ③ There are many master sake brewers from the nearby Tamba region.
- ④ A cold front called Rokko-oroshi that blows down from the mountains creates the perfect condition for sake brewing.

All of these factors helped create amazing flavor, therefore this area is considered to produce the best sake in Japan. Water wheels were introduced that allowed for finer refinement of rice, and the fact that the area is close to the ocean helped with distributing the products. These are all part of the reason why the area was able to produce top-quality sake that is loved by people all over Japan.



Sugitama

Sugitama is a ball made of cedar leaves. A fresh, green sugitama is hung on the doorstep of the breweries to notify people that a new batch of sake has been made.

Japanese Sake Scale



On the back label of Japanese sake, there are numbers with + and - signs. This shows the amount of sugar in the sake. For sake, a negative

number means it's sweet, and positive number means it's dry.

How to Enjoy Japanese Sake

Sake can be enjoyed chilled, warm, or at room temperature, which makes it very unique. The flavor changes depending on the temperature. The flavor of sake also changes as it ages, becoming milder.

The Power of Sake

Since the old days, sake brewers were known for their beautiful skin. Sake has anti-oxidants which work for anti-aging and skincare. Sake lees, a by-product of producing sake, are also known to have a high nutritional value.

Kobe Shushinkan Breweries/ (Sakabayashi Restaurant)



Established in 1751, during the mid-Edo era, the brewery is a well-known maker of popular sake called Fukuju. It uses locally grown rice such as Yamadanishiki and Gohyakuman-goku, and the finest Miyamizu water, keeping the tradition of creating sake by handcrafting techniques.

Website: <https://enjoyfukuju.com/en>
Shushinkan (Shop) Tel: 078-841-1121
Hours: 10:00-18:00 Open year-round

Sakabayashi (Restaurant) Tel: 078-841-2612
Hours: Lunch 11:30-15:00 (L.O.14:30), Dinner 17:30-21:00 (L.O.20:00),
Drinking hour on weekends and holidays 14:30-17:00 (L.O.16:30)
Dates closed: Wednesdays 12/31, 1/1~1/3 (except irregular open days)
Access: 8 minutes walk from Hanshin Ishiyagawa station, or 8 minutes drive from JR Rokkomichi station.

*Advance reservation is required for a brewery tour.



Japanese Sake

Like wine, sake pairs well with food, and since it's made from rice, it has a smooth, mellow flavor. While wine tends to have acidity and strong aromas, sake is softer and pairs well with a variety of dishes. At sake brewery tasting events, you can taste different sakes and learn about the production process, making it a great opportunity to find the sake that suits you perfectly.



Daiginjo Sake



Junmai Sake

Daiginjo Sake

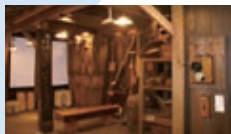
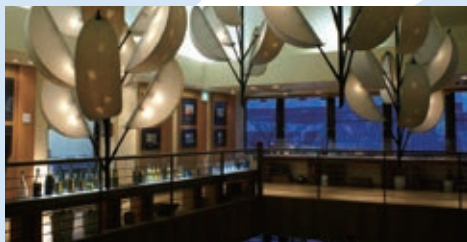
Sake with a rice polishing ratio of 50% or less is considered a high-quality drink, and is sometimes regarded as a work of art.

Junmai Sake

It is a traditional sake that focuses on flavor rather than aroma, allowing you to enjoy the umami of the rice.

Photo : Kobe Shushinkan

Sakuramasamune Memorial Hall



Sake-brewing tools, old signs, sake bottles, and different logos and labels are on display on the second floor. They also have other items that are related to sake and brewing.

Website: https://www.sakuramasamune.co.jp/sakuraen/sakuraen_index.html

Tel: 078-436-3030

Hours: 10:00-19:00 (Closed on Tuesday)

Restaurant hours: 11:30-15:00 (Last call 14:00),

17:00-22:00 (Last call 21:00)

Closed on Tuesdays

Access: 5 minutes walk from Hanshin Uozaki station.



Hakutsuru Sake Brewery Museum



An original brewery, Hakutsuru, was in operation until 1969 but was later made into a museum. The process of sake brewing, and the lives of sake brewers are displayed using models. There's a free tasting of the Junmai nama-genshu.

Website: <https://www.hakutsuru.co.jp/english/culture/museum.html>

Tel: 078-822-8907

Hours: 9:30-16:30 (Last entry 16:00)

Dates closed: Summer holidays in Aug. and New Year's

Access: 5 minutes walk

from Hanshin Sumiyoshi station.



Hakushika Classics



This shop and restaurant, operated directly by the sake brewery 'Hakushika,' offers a selection of sake-related



products you can only find here. They feature fresh sake and seasonal limited-edition sake. At the restaurant, you can

enjoy delicious dishes paired with sake sent directly from the brewery. Additionally, the adjacent Sake Museum is Japan's only museum dedicated to both 'sake' and 'sakura' (cherry blossoms).

Website: <https://classics.hakushika.co.jp/>

Tel: Restaurant : 0795-35-0001 Shop : 0798-35-0286

Hours: Shop: 10:00-18:00

Restaurant: Lunch: Weekdays 11:00-15:00, Saturdays,

Sundays, and holidays 11:00-15:30

Dinner: 17:00-22:00 (all days)

Dates closed: Shop: Tuesdays (or the following day if it's a holiday), 12/31-1/3

Restaurant: Mondays and Tuesdays (or the

following day if it's a holiday), 12/31-1/2

Access: 15 minutes walk or 5 minutes taxi ride from Hanshin Nishinomiya station



... Breweries offering free sake tasting.

Omiyage

If you are having hard time finding souvenirs, here are some recommended stores. From Hyogo's specialties to souvenirs for those who are living outside of Japan, there is a variety of items to choose from. Authentic souvenirs that can only be found Kobe, and traditional Tamba ware, are some of the most popular souvenirs.

Hyogo Furusato-kan



Over 2,000 selected items from entire the prefecture are gathering here. You will definitely find the one for souvenir.

Website: <https://www.hyogo-bussan.or.jp/shop/furusato/>
Tel: 078-252-0686

Hours: 10:00-20:00

Dates closed: New Year's

Address : 5th Floor, New Building, Kobe Hankyu Department Store

Access: Conveniently located at 3-5 minutes-walking from "Sannomiya" Station that is the hub station of the central district of Kobe City .



Omiage Hakkutsuya



Directly connected to the Shinkansen Shin-Kobe Station! This is a specialty product store where you can discover unique and "high-quality" Hyogo products and tourism attractions such as sweets, food, sake, and crafts from all over the prefecture.

Website: <http://msbranding.jp/hakkutsuya/>
Tel: 078-891-4888

Hours: 10:30-18:00 (Monday-Thursday) /
10:30-19:00 (Friday) / 10:00-19:00 (Sat, Sun, national holiday)
Open year-round

Address: 3rd Floor, Kotonohako Kobe

Access: 1 minute walk from Shin-Kobe station



Uzunokuni Minami-Awaji



Located on the hilltop overlooking the Naruto whirlpools, this is the complex of facilities of restaurant, souvenir shop, whirlpool science museum. At the souvenir shop, you will meet unique specialties of Awaji Island includes various kinds of Awaji Onion.

Website: <https://uzunokuni.com/en/>
Tel: 0799-52-2888

Hours: 9:00-17:00

Dates closed: Tuesdays

Address : Michi-no-Eki Uzushio

Access: 10 minutes from Fukura Port (car).



KOBE-SANDA PREMIUM OUTLETS®



210 OUTLET STORES

A sophisticated town modeled after Pasadena, a high-class residential suburb of Los Angeles. Visitors can enjoy shopping many international and Japanese brands.

Website: <https://www.premiumoutlets.co.jp/en/>
Hours: 10:00-20:00

(Restaurants hours: 11:00-21:00,
 Cafe hours: 9:30-20:00)

Dates closed: Once a year,
 on the third Thursday in February.

Access: <https://www.premiumoutlets.co.jp/kobesanda/access/>



Mitsui Outlet Park Marine Pia Kobe



A resort outlet that combines the appeal of shopping at an outlet mall with various activities taking advantage of its waterfront setting, offering a sense of escape from the everyday!

Website: <https://mitsui-shopping-park.com/mop/kobe/english/>
Phone: 078-709-4466 (10:00-18:00)

Hours: Shops: 10:00-20:00,

Food Market: 10:00-21:00, Food Court: 10:30-21:00

Note: Some stores may have different hours.

Hours are subject to change. Please check the facility's website for the latest information.

Dates closed: Irregular holidays

Access: 9-minute walk from JR/Sanyo Tarumi station



HANKYU NISHINOMIYA GREDENS



This shopping mall, one of the largest in Western Japan, features around 300 specialty stores, a department store, and a movie theater. It is directly connected to Hankyu "Nishinomiya-Kitaguchi Station," just 15 minutes by train from Osaka Umeda and Kobe Sannomiya. There is also an open-air rooftop garden with a fountain, known as the Sky Garden.

Website: <https://nishinomiya-gardens.com/en>
Phone: 0798-68-6666

Hours: Main building specialty stores (1F-5F): 10:00-20:00

1F Gardens Kitchen: 11:00-20:30

4F Dining Residence: 11:00-22:00

Nishinomiya Hankyu: 10:00-20:00

Izumiya: 10:00-21:00

TOHO Cinemas Nishinomiya OS: 9:00-24:00

(*Please note that some hours may vary.)

Dates closed: Irregular holidays

Access: 3 minute walk from Hankyu Nishinomiya-kitaguchi station (East exit)



Tamba-Sasayama Taisho Romankan



This charming Western-style building, which still retains the influence of Taisho Modernism, served as the Sasayama Town Hall for approximately 70 years, from April 1923 to March 1992. Since June 1993, it has been operating as the Taisho Roman-kan, where you can find a variety of local souvenirs made from seasonal specialty products of Tamba Sasayama, as well as a café-restaurant where you can enjoy local delicacies.

Website: <http://tanbasasayama.hyogo.jp/>
Phone: 079-552-6668

Hours: 10:00-17:00

Dates closed: Tuesdays

(and occasional temporary closures)

Access: From JR Sasayamaguchi Station, take a bus bound for the city and get off at the Nikaimachi bus stop. It is a 3-minute walk from there.



Event Calendar

Seasonal and Historical
Events in Hyogo



春

Spring

Cherry Blossom Viewing

There are many places around Hyogo where people can relish Japanese cherry blossoms. Himeji Castle, Akashi Park and Shukugawa Park were chosen as three of Japan's top 100 cherry blossoms viewing spots. The best season is late March to early April. And even after full bloom, visitors can enjoy the beautiful shower of falling cherry petals. Some places offer lighting for night viewing.

How to get to Himeji Castle

15 minutes walk from JR Sanyo line Himeji station.



夏

Summer

Shining Sunflowers

When it comes to flowers that represent summer, sunflowers are a standout. In Nanko Town, you'll find one of the largest sunflower fields in Western Japan. Fireworks, blooming like giant flowers in the sky, are also one of the season's pleasures.

Fireworks Festivals in Hyogo Prefecture

- Himeji Minato Festival (Himeji City)
- Kinosaki Onsen Furusato Festival (Toyooka City)
- Takarazuka Kanko Fireworks Festival (Takarazuka City)
- Awaji Island Fireworks Festival (Awaji Island)
- Citizens' Evening (Ako City)



秋

Fall

Autumn Foliage

Leaves changing color paint Hyogo's mountains beautifully. The colder it gets, the more colorful they become. Mt. Shosha is one of the finest spots for viewing maple leaves changing color. The temple opens important cultural properties to the public for the season so that visitors can explore both nature and the history of Hyogo.

How to get to Mt. Shosha (Himeji)

Take the Shinkai Bus bound for Shosha Ropeway from JR Himeji station.



冬

Winter

Kobe Luminarie

Kobe Luminarie, the largest illumination festival in the country, is the most popular winter event in Kobe. There will be illuminations in Harbourland that are also very popular. Winter is the season when Kobe shines the most.

How to get to Meriken Park

10 minutes walk from the east exit of JR/Hanshin Motomachi station.

January

Gencho-noh Okina Shinji

Kasuga Shrine, Tamba-Sasayama

Hot Spring Irizomeshiki

Arima Hot Spring, Kobe

Toka Ebisu Festival

Nishinomiyama Shrine

National Kite Festival

Tastuno, Harima

Great Hanshin-Awaji Earthquake Gathering

Higashi-yuenchi, Kobe



National Kite Festival



Toka Ebisu Festival



Chinese New Year

February

Kobe Nankinmachi New Year Festival

Nankinmachi, Kobe

Daikakuji Setsubun Festival

Daikakuji, Amagasaki

Hatsu-uma Festival

Minatogawa Shrine, Kobe

Neriko Festival

Sumoto-shi Yuraminato Shrine

Yakuyoke (expelling out evil) Festival

Hachiman Shrine, Kaibara, Tamba

World heritage Himeji Castle marathon

Himeji

March

Uzushio (Whirlpool) Festival

Minamiawaji

Izushi Hatsu-uma Festival

Around Izushi Castle Ruins, Toyooka

Sasayama ABC Marathon

Tamba-Sasayama

April

Himeji Castle Cherry Blossom Viewing Party

Himeji Castle

Kawanishi-shi Genji Festival

Kawanishinoseguchi

Kinosaki Onsen Festival

Kinosaki Hot Spring, Toyooka

Infiorata Kobe

Different places within Kobe

Soba Eating Tournament

Izushi, Toyooka



Himeji Castle Party



Infiorata Kobe



Soba Eating Tournament

May

Kobe Festival

Kobe

Aioi Peron Festival

Aioi Port, Harima



Kobe Festival



Aioi Peron Festival

June

Yumura Hot Springs Festival

Shinonsen-cho

Himeji Yukata Festival

Osakabe Shrine, Himeji

July

Sento Festival

Ikuta Shrine, Kobe

Sunflower Festival

Nanko, Sayo-cho

Sosya Year of Abundance Summer Festival (Yutate Shinji)

Harima-no-kuni, Sosa, Himeji

Ieshima Tenjin Festival

Ieshima Shrine, Himeji

August

Awaji Island Festival

Sumoto

Rakanji Sento-e

Kasai

Dekansho Festival

Tamba-Sasayama

Otanigawa-noryo-toro-nagashi

Kinosaki Hot Spring, Toyooka

September

Kobe-Nankinmachi Chushu-setsu

Nankinmachi, Kobe

Kotoshironushi Shrine

Kariya, Awaji

Mizukake Festival

October

Nada Kenka Matsuri

Hachiman Shrine, Matsubara, Himeji

Kobe Jazz Street

Kitano and other areas in Kobe

Tamba Sasayama Flavor Festival

Tamba-Sasayama

Oushiko Shrine Fall Festival

Takasago

Tamba Tachikui Yaki Pottery Festival

Sue-no-sato, Sasayama



Nada Fighting Festival (October)



Kobe Jazz Street



Arima Tea Ceremony

November

Arima Tea Ceremony

Arima Hot Spring, Kobe

Izushi Castle Festival

Izushi, Toyooka

Miki Hardware Festival

Shiyakusho-mae, Miki

Opening of the Crab Kingdom

In front of Kinosaki Onsen Station

Hyakkoku Dance

Komausa-hachiman Shrine, Sanda

Kobe Marathon

December

Kasumi Crab Festival

Kasumi-ku, Kami-cho

Ako Loyal Samurai Festival

Ako

Schedule may change without prior notice.
Check the schedule before attending the events.

■ For further questions or comments

HYOGO TOURISM BUREAU

Available during the weekdays

TEL: 078-361-7661 Hours: 9:00-17:30
<https://www.hyogo-tourism.jp.e.atl.hp.transer.com/>
 E-mail: information@hyogo-tourism.jp



Special Travel Passes

Travel Economically on JR

JR-West Rail Pass

Passes for short-term foreign travelers to Japan.

- **[Kansai Area Pass]** can be used on main railways in Kobe, Osaka, and Kyoto, Nara, Himeji and Wakayama. Unlimited access to Limited express train Haruka (non-reserved seats only) excluding the bullet trains.

- **[Kansai Wide Area Pass]** is providing 5 consecutive days of unlimited travel on designated JR trains (including unreserved seats on selected shinkansen and Limited express trains) in the Kansai region.

- **[Sanyo-San'in Area Pass]** gives you unlimited rides in Sanyo (Okayama, Hiroshima, Yamaguchi) and San'in (Tottori, Shimane) in addition to Kansai region.

For more information : <https://www.westjr.co.jp/global/en/ticket/>



Japan Rail Pass

This pass offers unlimited travel on any JR train in the country. (There are some exceptions.)

For more information : <https://japanrailpass.net/en/>



Travel economically on lines other than JR

Kansai Thru Pass

This pass can be used on all the trains in Kansai region excluding JR lines.

For more information: https://www.surutto.com/kansai_rw/en/index.html



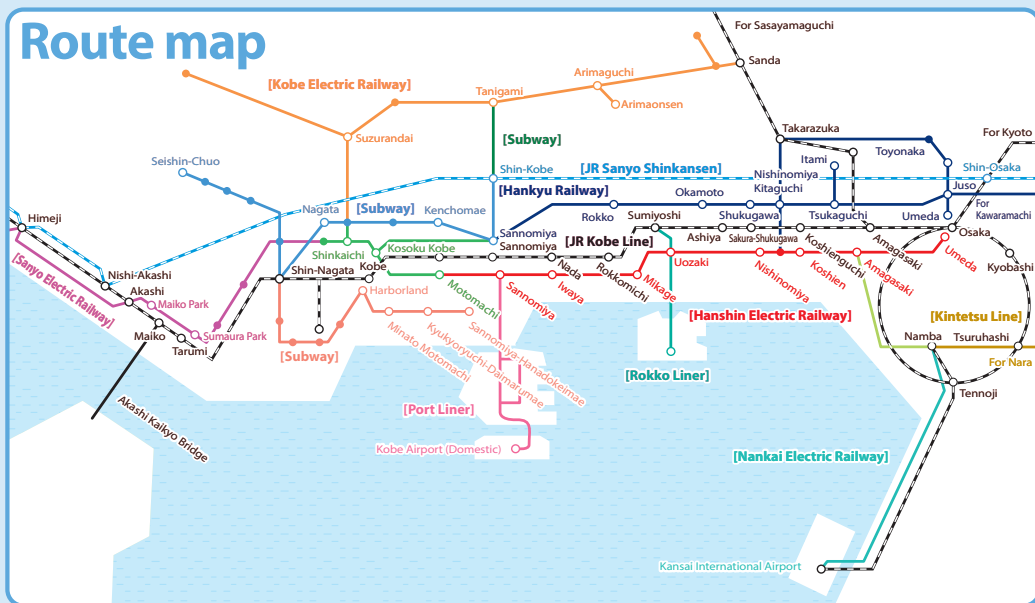
Kansai One Pass

This pass can be used on all major public transit lines (JR & subway) in Kansai region.

For more information : <https://kansaioneppass.com/en/?lat=34.69138380820372&lng=135.1834748853276>



Route map



Transportation

There are many different types of public transportation, as well as tickets and passes available to tourists.

By using tourist passes, you can also receive discounts on your travel.

Information centers offer you route maps and timetables.

Kobe City Loop Bus



The City Loop Bus will take you around all the main attractions. It takes 63 minutes to make one loop and connects 16 bus stops between Kobe Port and the Kitano Foreigners Residences. Videos are shown at the bus about each site. If you purchase a one-day pass, it will get you a discount at many tourist attractions.

Website: <https://kobeloop.bus-japan.net>
TEL: 078-341-2277

Fare: Adult (over Junior High School students) ¥300
Child (6 yrs to Elementary School students) ¥150
One Day Pass: Adult ¥800, Child ¥400
Two Day Pass: Adult ¥1,200, Child ¥600



Himeji Castle Loop Bus



This bus will take you on a ride to see the famous garden at a samurai's house, Kokoen; the Himeji City Museum of Art; Himeji Castle, and more.

Website: <https://www.shinkibus.co.jp/bus/himejiloop/index.html>

Shinkibus: 079-285-2990

Fare: Adult ¥210, Child ¥110

One-Day Pass: Adult ¥600, Child ¥300

*Get a discount by presenting your One Day Pass at Himeji Castle, Kokoen, the Himeji City Museum of Art and the Himeji City Museum of Literature.

Days of Service: Everyday (Sat., Sun. & holidays
in Dec., Jan. & Feb.)



Bay Shuttle



The Bay Shuttle is a speed boat that connects Kobe Airport and Kansai International Airport in 30 minutes. If you're planning on heading to the central part of the city after getting off the boat, it's cheaper to purchase the Bay Shuttle ticket with a monorail Port Liner ticket.

Website: <https://www.kobe-access.jp/eng/>
TEL: 078-304-0033 (9:00-18:00)

Fare: One way: Adult ¥1,880, Child ¥940

Round way: Adult ¥3,060,
Child ¥1,530



Rent-a-Cycle

One of the easiest and affordable ways to explore the city is taking a ride around the city on a bike. There are even some places where you can rent bicycles for free. Please stop by information centers for more details.



Location	Where to Rent	Business hours
Rent-a-Cycle Kobe	Kobelin Port Website: https://www.kobelin.jp/pdf/i_en.pdf TEL: 0120-040-587	24 hours Open year-round
Rent-a-Cycle Kinosaki	Kinosaki Onsen Tourist Information Center Website: https://www.kinosaki-web.com/en/ TEL: 0796-32-4141	9:30-17:45 Open year-round
Rent-a-Cycle Izushi	Izushi Tourist Website: https://daytrip-izushi.jp/english/ TEL: 0796-52-6045	9:00-17:00 Open year-round
Rent-a-Cycle Ako	Ako Tourism Association Website: https://ako-kankou.jp/en/ TEL: 0791-42-2602	9:00-17:00 Holidays: Year end and new year (December 29 - January 3)
Rent-a-Cycle Iwaya Awaji	Iwaya Tourist Information Website: https://awajikanko.com/cycling_izanagi/#i-28 TEL: 0799-72-3420	9:00-16:30
Rent-a-Cycle Sumoto Awaji	Sumoto Tourist Information Website: https://awajikanko.com/cycling_izanagi/#i-28 TEL: 0799-25-5820	9:00-16:30
Rent-a-Cycle Minami Awaji	Minami Awaji Tourist Information Website: https://awajikanko.com/cycling_izanagi/#i-28 TEL: 0799-52-2336	9:00-16:30

※ID and a deposit or advance payment might be required.

HYOGO TOURISM BUREAU

*Please be advised that we accept phone calls only during weekdays.

Website <https://www.hyogo-tourism.jp/world/>

Tel 078-361-7661

Hours 9:00-17:30

E-mail information@hyogo-tourism.jp



Kobe Information Center



Tel 078-241-1050

Website <https://www.feel-kobe.jp/en/>

Hours 9:00-18:00

Dates closed 12/31-1/1

Location The south of JR Sannomiya Station/ the east exit of Hankyu Sannomiya Station.



Shin-Kobe Station Tourist Information Center



Tel 078-241-9550

Website <https://www.feel-kobe.jp/en/>

Hours 9:00-17:00

Dates closed 12/31-1/1

Location JR Shin-kobe station 2nd floor



Arima Onsen Tourism Information Center



Tel 078-904-0708

Website <https://www.feel-kobe.jp/en/>

Hours 9:30-17:00

Location Arima Onsen bus stop



Kinosaki Onsen Tourism Association



Tel 0796-32-3663

Website <https://kinosaki-spa.gr.jp>

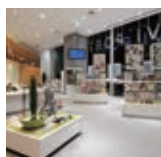
Hours 9:00-17:00

Open year-round

Location Kinosaki Literature Hall, 5 minute walk from JR Kinosaki Onsen Station.



Himeji Kanko Navi port (Himeji Tourist Information Center)



Tel 079-287-0003

Website <https://visit-himeji.com/en/>

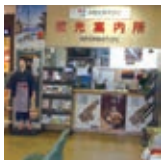
Hours 8:30-18:30

Dates closed 12/29-12/30 and facility inspection days

Location West side of JR Himeji Station central concourse



Sumoto Tourism Information Center (Awaji)



Tel 0799-22-0742

Website <https://www.awajishima-kanko.jp/en/>

Hours 9:00-17:00

Dates closed Thursdays

Location Inside Sumoto Bus Center



Kitano Tourist Information Center



Tel 078-251-8360

Website <https://www.feel-kobe.jp/en/>

Hours March to October 9:00-18:00/
November to February 9:00-17:00

Dates closed 12/31-1/1

Location In front of Kitano Kazamidori-no-yakata (Weathercock House)



Others

Takarazuka City International Tourism Association

<https://kanko-takarazuka.jp/english/>

Ako Tourism Association

<https://ako-kankou.jp/en/>

Sasayama Tourism

<https://tourism.sasayama.jp/category/spot/>

Airports

Kansai International Airport

Tel: 072-455-2500

Osaka International Airport Information Center

Tel: 06-6856-6781

Kobe Airport Information Center

Tel: 078-304-7777

Tajima Airport

Tel: 0796-26-1507

For further assistance



Hyogo International Association Information and Advisory Center

(Information for hospitals and medicals available in foreign languages)

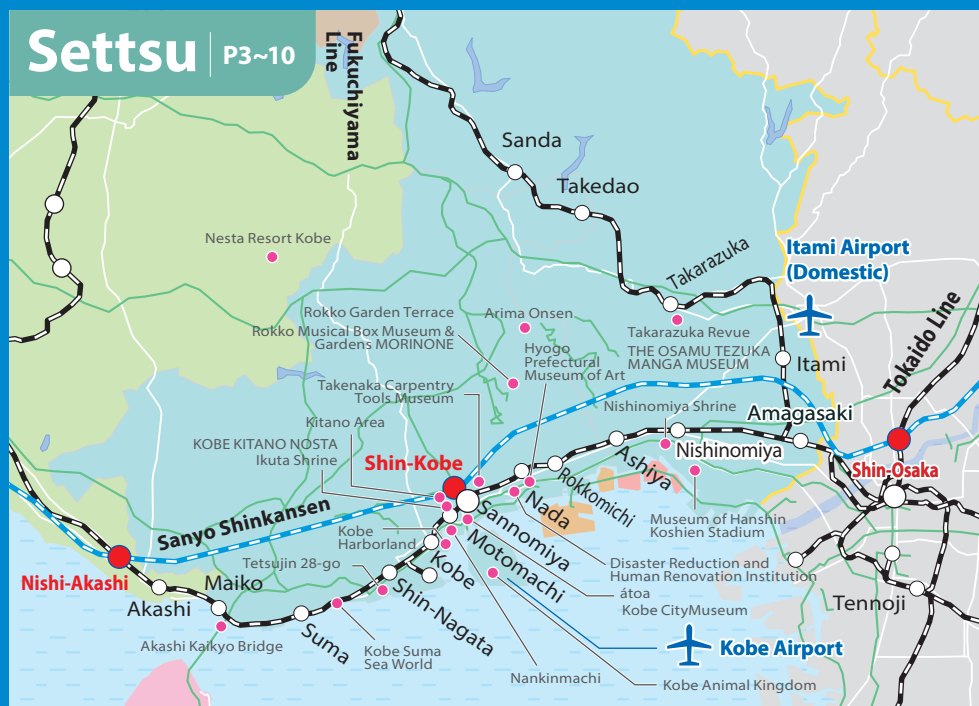
Tel: 078-382-2052

Hyogo Map

Hyogo
Prefecture



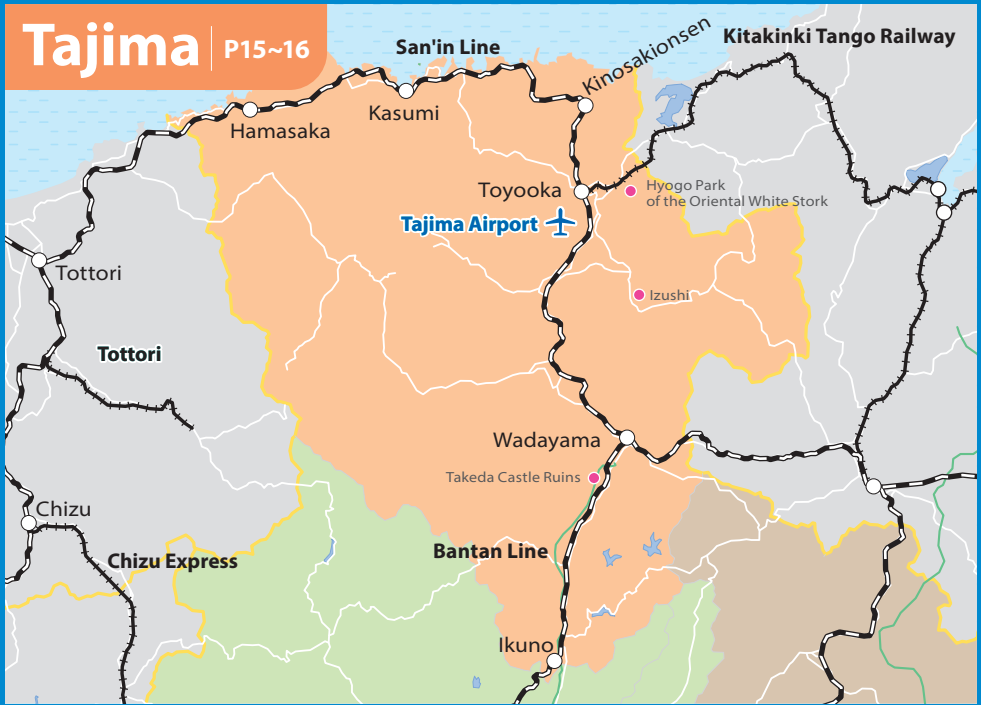
Settsu | P3~10



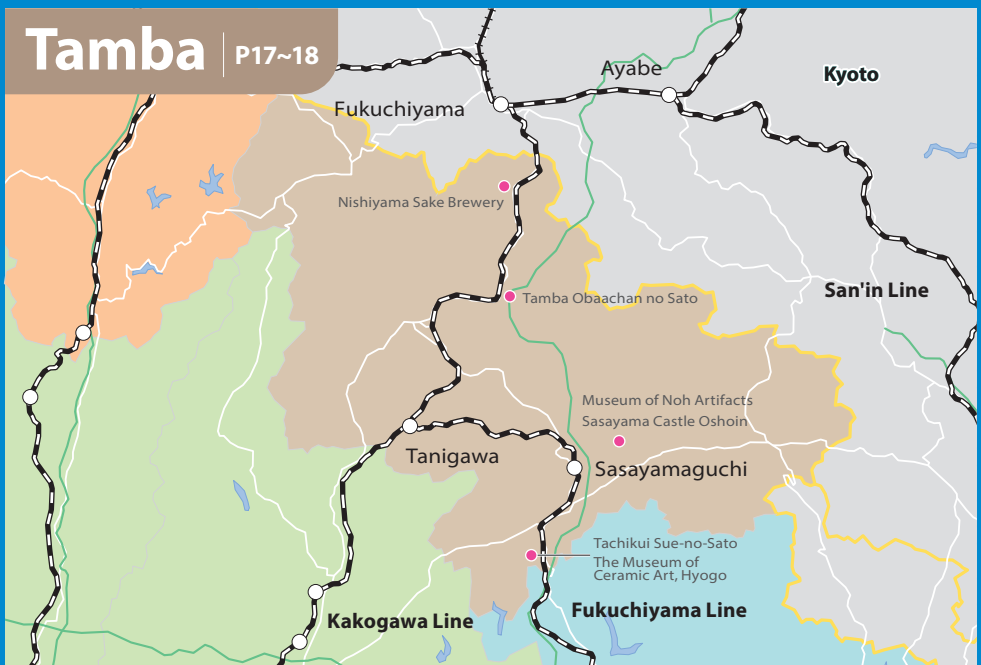
Harima | P11~13



Tajima | P15~16



Tamba | P17~18



Awaji | P19~20





Himeji Castle



Hyogo Maiko Park



Ankoku-zenji Temple



Kinosaki Onsen Town

Hyogo Prefecture is located in the center of Japan, where the 135th meridian east and the 35th parallel north intersect, the point that is the basis for Japan Standard Time.

Access

◆ **Kansai International Airport**

By Train: Kansai International Airport to JR Sannomiya Station: approx. 1 hr 20 mins
 By Limousine Bus: Kansai International Airport to Sannomiya: approx. 1 hr 20 mins
 By High-speed Ferry: Kansai International Airport to Kobe Airport: approx. 30 mins

◆ **By Shinkansen**

Tokyo Station to Shin-Kobe Station: approx. 2 hrs 45 mins
 Tokyo Station to Himeji Station: approx. 3 hrs 5 mins

◆ **By Plane**

Haneda Airport to Osaka International Airport: approx. 1 hr 10 mins
 Haneda Airport to Kobe Airport: approx. 1 hr 20 mins

*Travel times may vary depending on the day and train service used. Charges of train may be required on route.

Hyogo Tourism Bureau



発行
(公社)ひょうご観光本部
神戸市中央区下山手通5-10-1
Tel : 078-361-7661