



SAKE VOYAGE

ENJOY A SAKE TRIP TO JAPAN



SAKE
VOYAGE

Welcome to
four Sake Breweries
and two Restaurants



燦爛

益子の銘酒



SAKE VOYAGE

TONOIKE SAKE BREWERY

Countryside Brewery in Mashiko

SAKE VOYAGE
9:00
~
17:00

TONOIKE SAKE BREWERY

Countryside brewery in Mashiko

Located in Mashiko, a well-known countryside pottery town 2.5 hours North of Tokyo.

Take a tour of the brewery and visit the small sake museum, where you can take photos and learn how sake is made, and sample fresh sake in the tasting room.

📍 333-1 Hanawa, Mashiko Town, Tochigi Pref. 321-4216

🕒 Open everyday 9:00-16:00

☎ +81(0)285-72-0001

Scan the QR code

Official Website



<http://www.sanran-sake.com/>

Tourism Website



<http://nearbytokyo.com/tonoike-sake-brewery/>



Map





SAKE
VOYAGE

SHIMAZAKI SAKE BREWERY

The 'Cave' Brewery

SHIMAZAKI SAKE BREWERY



The 'Cave' brewery

Established in 1849, Shimazaki Sake brewery has a long history of brewing sake. Famously known as the "Cave Brewery", the brewery ages their award-winning premium sake in a nearby cave, which was dug out during WW2. Visitors can walk through the cave and sample their sake.

📍 1-11-18 Chuo,
Nasukarasuyama
city,
Tochigi Pref.
321-0621

🕒 The cave is open on
Sat, Sun & Holidays
between April and
November.
10:00-16:00

☎️ +81 (0)287-83-1221

Scan the QR code



Official Website



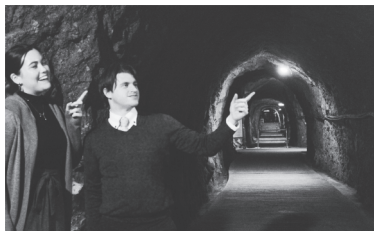
<http://azumarikishi.co.jp/english/>

Tourism Website



<http://nearbytokyo.com/shimazaki-sake-brewery/>

Map





SAKE
VOYAGE

WATANABESAHEI
SAKE BREWERY

Traditional Sake Brewery in Nikko

光譽
酒造

WATANABESAHEI SAKE BREWERY



Traditional sake brewery in Nikko

Watanabesahei Sake Brewery is a small brewery on the foot of the Nikko mountains (UNESCO world heritage site). English signage and information, as well as friendly staff, make it a popular destination with visitors.

📍 450 Imaichi,
Nikko City,
Tochigi Pref.
321-1261

🕒 am 9:00-12:00
pm 1:00-4:00

☎️ +81 (0)288-21-0007

Scan the QR code



Tourism Website



[http://nearbytokyo.com/
watanabesahei-sake-brewery/](http://nearbytokyo.com/watanabesahei-sake-brewery/)

Official Website (Japanese)



<http://www.watanabesahei.co.jp/>

Map





SAKE
VOYAGE

KATAYAMA
SAKE BREWERY

Keeping Traditional Methods Alive



KATAYAMA SAKE BREWERY



Keeping traditional methods alive

Katayama Sake Brewery is a small but dedicated sake brewery in Nikko that specializes in Genshu (unfiltered, unpasteurized, and undiluted sake). Visit to learn about the traditional sake making process.

📍 146-2 Segawa,
Nikko City,
Tochigi Pref.
321-1263

🕒 am 10:00-12:00
pm 1:00-4:00

☎ +81 (0)288-21-0039

Scan the QR code



Official Website



<https://www.kashiwazakari.com/english.html>

Tourism Website



<http://nearbytokyo.com/katayama-sake-brewery/>

Map





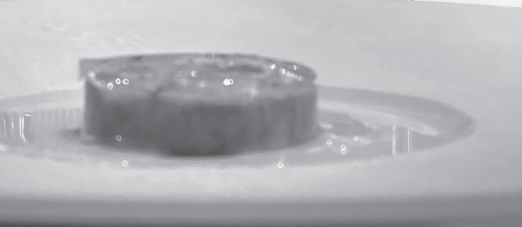
SAKE
VOYAGE

OTOWA RESTAURANT

An Exquisite Marriage
with French Cuisine



OTOWA RESTAURANT



Experience an Exquisite Marriage with French Cuisine

Created by L'Ordre du Mérite Agricole Chevalier-awarded chef Kazunori Otowa. Visit Otowa restaurant to experience a beautiful marriage of French cuisine, deeply rooted in Japanese culinary culture and premium quality handcraft sake from four local breweries.

Scan the QR code

Sake Dinner



<https://sakevoyage.com/dinner/otowa-restaurant/>

Official Website



<https://otowa-artisan.co.jp/>

Map



📍 3554-7 Nishiharacho, Utsunomiya city, Tochigi-ken, Japan 320-0826

🕒 Dinner :
Tues- Sun
17:30~22:00
(last order 19:30)
*Closed Mondays
(Please make a reservation)

☎ 028-651-0108





SAKE
VOYAGE

RYO-KAN

Top-quality Kaiseki dinner
paired with premium sake

RYO-KAN JAPANESE RESTAURANT

**Top-quality Kaiseki dinner paired
with premium sake**

Be prepared to immerse yourself in a journey of beautiful Japanese Kaiseki paired with delicious premium quality handcraft sake from local breweries carefully selected to match each dish. Fresh vegetables are sourced locally, and fish are sourced directly from the goto islands.

📍 1-7-10 Yoshino,
Utsunomiya city,
Tochigi-ken,
Japan 320-0838

🕒 Dinner: Tues-Sun
18:00~22:00
(last order 19:30)
*Closed Mondays
(Please make
a reservation)

☎ 028-611-1711

Scan the QR code



Sake Dinner



[https://sakevoyage.com/dinner/
ryokan-japanese-restaurant/](https://sakevoyage.com/dinner/ryokan-japanese-restaurant/)

Official Website



[https://ryo-kan-utsunomiya.
gorp.jp/](https://ryo-kan-utsunomiya.gorp.jp/)

Map

