

# MIYAKOJIMA TOKYU HOTEL & RESORTS

914 Aza-yonaha, Shimoji, Miyakojima-shi, Okinawa 906-0305  
TEL: (81) 980-76-2109 / FAX: (81) 980-76-6781



Miyakojima is a paradise whose ocean, sky, and sun will relieve if not heal both body and soul. Spread out before the hotel is a beach of gleaming white sand, and all spacious ocean-view guestrooms are complete with a balcony. Step out and enjoy the sea breeze, sound of waves, and beautiful sunset.

 Check-in 14:00  
Check-Out 11:00

 Spa Area, Swimming Pool, Kiddy Pool

 215 Parking Spaces (Free for guests)

## USP

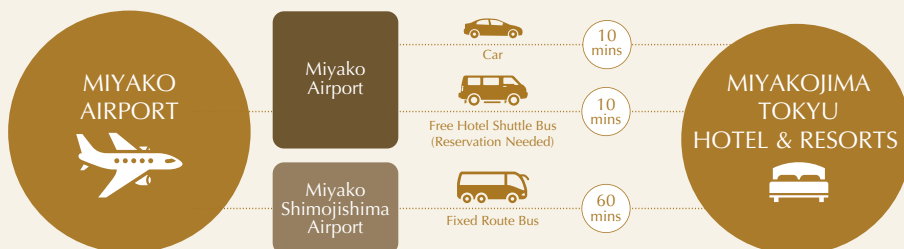
- Right in front of Yonaha Maehama Beach
- Teppanyaki
- Sunset

## Surrounding Attractions

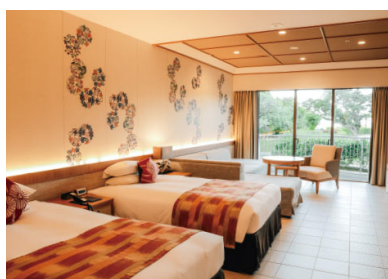
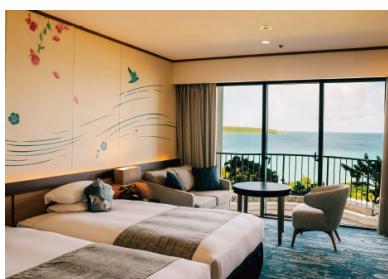
- Irabu Bridge
- Higashi-hennazaki
- Emerald Coast Golf Links



## ACCESS







## GUEST ROOMS INFORMATION

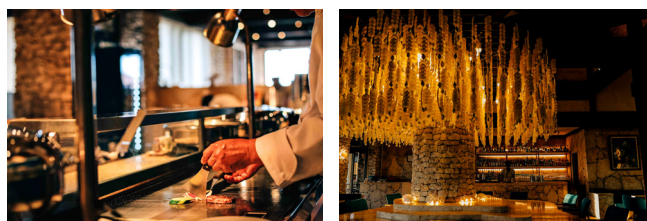
TYPE	NO. OF ROOM	SIZE (m <sup>2</sup> /ft <sup>2</sup> )	BED SIZE (cm)
TWIN	221	32.2~ / 346	120x195
SUITE	1	84.3 / 907	120x195
JAPANESE / WESTERN STYLE	20	38.2 / 411	120x195
OTHERS	4	16.3 / 175	140x195

\*All Guest Rooms are equipped with Wi-Fi and LAN Access Internet Connection

## BANQUET HALLS & MEETING ROOMS

NAME	AREA (m <sup>2</sup> /ft <sup>2</sup> )	HEIGHT (m/ft)	CAPACITY		
			BANQUET	RECEPTION	CLASSROOM
Palm Terrace	250 / 2690	4 / 13	80	100	50
Sango	70 / 753	3.2 / 10.5	30	-	24

\*All Banquet Halls are equipped with LAN Access Internet Connection



## RESTAURANTS

NiraiKanai (Buffet)	Bar Moon Shell
BARBECUE HOUSE MAIPAMA	
Japanese Dining Yaebishi (Sushi & Teppanyaki)	



Amadeus	Apollo/Galileo	Sabre	Worldspan
OKAMTH	E0034	432091	MMYMT

For more information, please visit us at <https://www.tokyuhotels.co.jp/en/miyakojima-h/>



# HAKATA EXCEL HOTEL TOKYU

4-6-7 Nakasu, Hakata-ku, Fukuoka-shi, Fukuoka 810-0801, Japan  
TEL (81) 92-262-0109 / FAX: (81) 92-262-5578



Hakata is a city with many exciting festivals. Hakata Excel Hotel Tokyu is in the entertainment center of Nakasu, along the Naka River. Modern and chic guestrooms are spacious and offer great relaxation. Nearby are restaurants, bars, street stalls and much more that promise a fun evening for one and all.

 Check-in 15:00  
Check-Out 11:00

 Vending machines (1F lobby and basement),  
Ice machines (4~10F and 12F), Smoking Booth at Lobby

 52 Parking Spaces (Charges Apply)

## USP

- Gateway to Asia
- Kyushu's Largest Downtown Area
- Food Culture

## Surrounding Attractions

- Food Stalls
- Dazaifu Tenman-gu
- Hakata Gion Yamakasa



Food Stalls



Dazaifu Tenman-gu



## ACCESS

1  
BY TRAIN

Nakasu  
Kawabata  
Station (Exit 1)

Airport Subway  
Line



By Foot

1  
mins

HAKATA EXCEL  
HOTEL TOKYU



JR Hakata  
Station



Car

7  
mins

2  
FUKUOKA  
AIRPORT



Train

10  
mins



By Foot

1  
mins

JR Nakasu  
Kawabata  
Station  
(Exit 1)

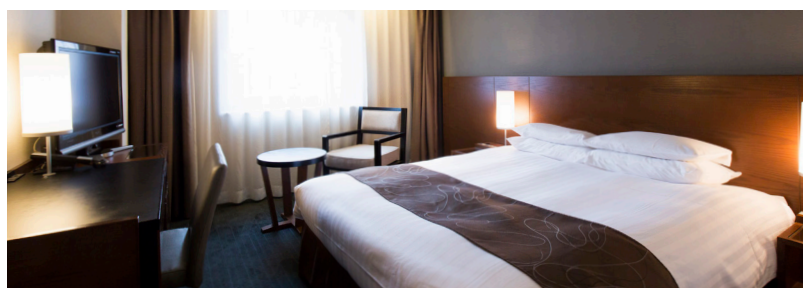
HAKATA EXCEL  
HOTEL TOKYU



Car

20  
mins

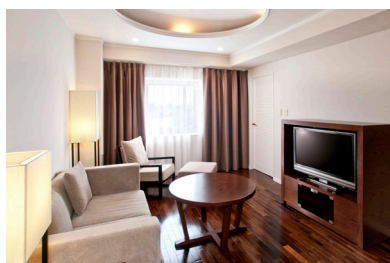




## GUEST ROOMS INFORMATION

TYPE	NO. OF ROOM	SIZE (m <sup>2</sup> /ft <sup>2</sup> )	BED SIZE (cm)
SINGLE	128	18.3~ / 197~	From 140x195
TWIN	110	18.5~ / 199~	From 100x195
DOUBLE	32	18.5~ / 199~	From 160x195
SUPERIOR	28	38.5~ / 414~	120x195
SUITE	9	43.5~ / 468~	130x195
OTHER	1	33.5 / 360	120x195

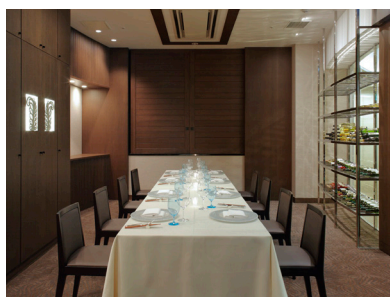
\*All Guest Rooms are equipped with Wi-Fi and LAN Access Internet Connection



## BANQUET HALLS & MEETING ROOMS

NAME	AREA (m <sup>2</sup> /ft <sup>2</sup> )	HEIGHT (m/ft)	CAPACITY			
			BANQUET	RECEPTION	CLASSROOM	SQUARE
Soleil (Divisible)	187 / 2013	3 / 9.8	100	120	105	54
Leaf	24 / 258	3 / 9.8	12	20	-	12

\*All Banquet Halls are equipped with LAN Access Internet Connection



## RESTAURANTS

Charcoal grilled Restaurant, KEYAKI

Japanese Restaurant, ITONOAKARI

Room Service not Available

Amadeus

FUKHET

Apollo/Galileo

AI904

Sabre

252010

Worldspan

FUKHE

For more information, please visit us at <https://www.tokyuhotels.co.jp/en/hakata-e/>



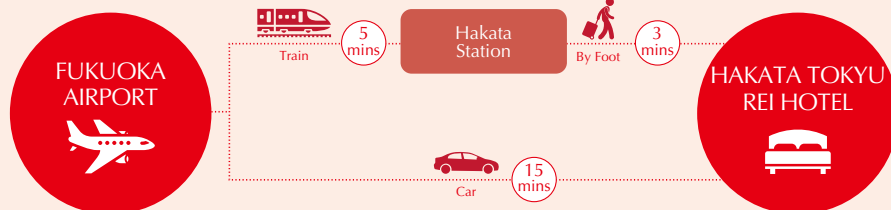
# HAKATA TOKYU REI HOTEL

1-2-3 Hakataekimae, Hakata-Ku, Fukuoka-shi, Fukuoka 812-0011, Japan  
TEL: (81) 92-451-0109 / FAX: (81) 92-451-01088



Hakata Tokyu REI Hotel is a high-level hotel perfect for business as well as sightseeing in and around Hakata. The hotel is conveniently located 3 minutes by foot from Hakata station. Hotel offers simple Western-style accommodations with free Wi-Fi comfortable mattresses for both comfort and convenience.

## ACCESS



## GUEST ROOMS INFORMATION

TYPE	NO. OF ROOM	SIZE (m <sup>2</sup> /ft <sup>2</sup> )	BED SIZE (cm)
SINGLE	24	18 / 194	140x195
TWIN	49	24.4~ / 263~	121x195
DOUBLE	130	18 / 194	160x195
OTHER	1	27.6 / 297	160x195

\*All Guest Rooms are equipped with Wi-Fi and LAN Access Internet Connection

## RESTAURANT

### Guest Lounge



\*Room Service not Available



Check-in 15:00  
Check-Out 10:00



12 Parking Spaces (Charges Apply)



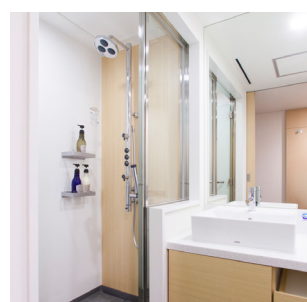
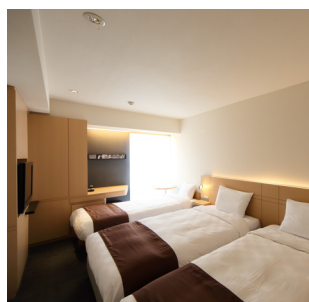
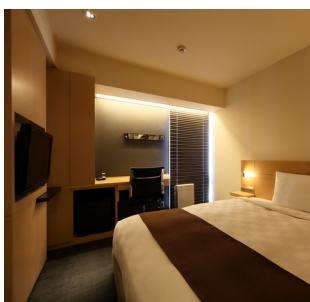
Laundry Room, Vending Machines

### USP

- Easily accessible from Train Station
- Tourist Spot
- Gateway to Asia

### Surrounding Attractions

- Hakata Station
- Canal city Hakata
- Dazaifu Tenman-gū



Amadeus

FUKHTR

Apollo/Galileo

AY538

Sabre

474292

Worldspan

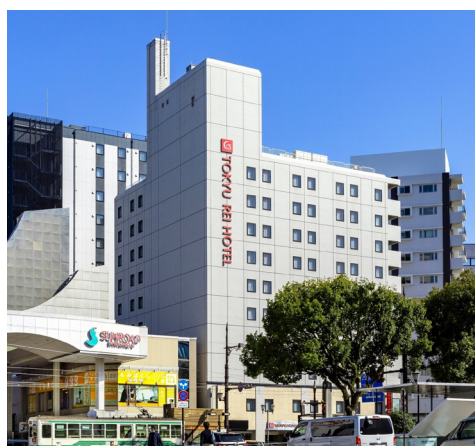
FUKHT

For more information, please visit us at <https://www.tokyuhotels.co.jp/en/hakata-r/>



# KUMAMOTO TOKYU REI HOTEL

7-25, Shinshigai, Chuo-ku, Kumamoto-shi, Kumamoto 860-0803, Japan  
TEL: (81) 96-322-0109 / FAX: (81) 96-322-3050



Mount Aso, with the world's largest caldera, and Unzen-Amakusa, comprising 120 islands large and small, are just some of Kumamoto's great natural highlights. There are magnificent historical sites like Kumamoto Castle, with beautiful stone walls, as well as Suizenji Park. Kumamoto Tokyu REI is a seven-minute drive from JR Kumamoto Station and all popular tourist destinations can be easily reached. Guestrooms are bright and spacious.

**Check-In** 15:00  
**Check-Out** 10:00

**P** Affiliated Car Park (Charges Apply)

**R** Restaurant, Vending Machines, Laundry Corner

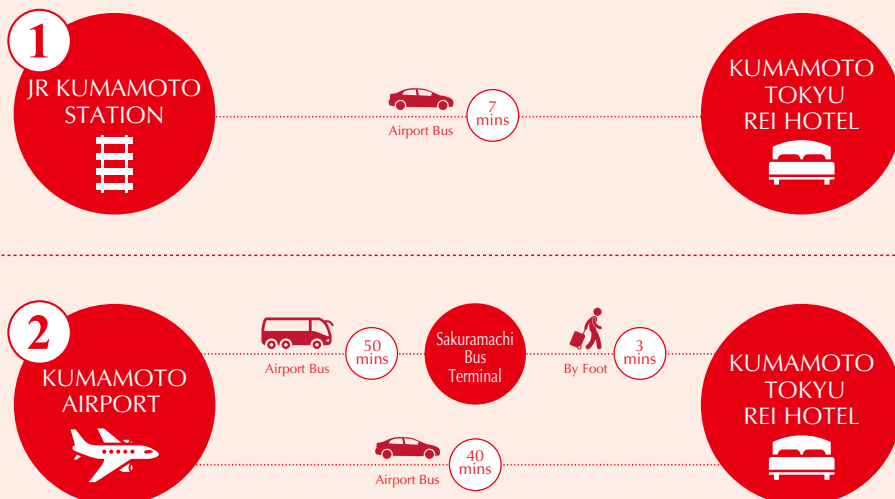
## USP

- Location • Tourist Attractions
- Birth of Kumamon (Kumamoto's Mascott)

## Surrounding Attractions

- Kumamoto Castle
- Suizen-ji Jōju-en (Japanese Garden)
- Mount Aso

## ACCESS



## GUEST ROOMS INFORMATION

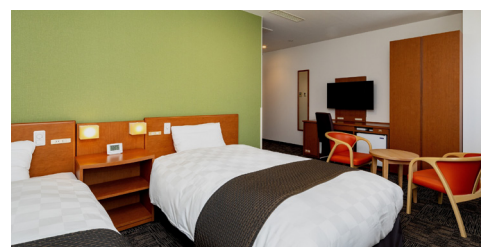
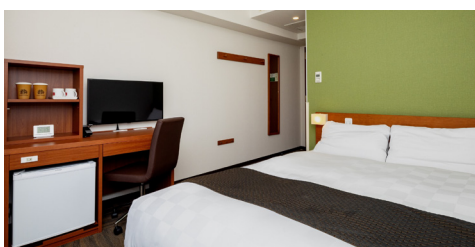
TYPE	NO. OF ROOMS	SIZE (m <sup>2</sup> /ft <sup>2</sup> )	BED SIZE (cm)
SINGLE	92	13 / 140	120×195
TWIN	11	27 / 291	120×195
DOUBLE	32	15 / 161	160×195
TRIPLE	5	36 / 388	120×195

\*All Guest Rooms are equipped with Wi-Fi and LAN Access Internet Connection

## RESTAURANTS



\*Room Service Not Available



For more information, please visit us at <https://www.tokyuhotels.co.jp/en/kumamoto-r/>



# NAHA TOKYU REI HOTEL

Kafuna Asahibashi, 116-37, Asahimachi, Naha-shi, Okinawa 900-0029, Japan  
TEL: (81) 98-869-0109 / FAX: (81) 98-869-0179



Naha, Okinawa's center, is both a functional city and resort town. Naha Tokyu REI Hotel is a high-level hotel perfect for business as well as sightseeing in and around Naha, conveniently located 10 minutes by monorail from Naha Airport.

## ACCESS

1

ASAHIBASHI  
STATION



By Foot

7  
mins

NAHA  
TOKYU  
REI HOTEL



2

NAHA  
AIRPORT



Car

15  
mins

NAHA  
TOKYU  
REI HOTEL



## GUEST ROOMS INFORMATION

TYPE	NO. OF ROOM	SIZE (m <sup>2</sup> /ft <sup>2</sup> )	BED SIZE (cm)
DOUBLE	156	17.9~ / 192~	160x195
TWIN	44	17.9~ / 192~	110x195
DELUXE TWIN	15	25 / 269	113 / 195

\*All Guest Rooms are equipped with Wi-Fi and LAN Access Internet Connection



## RESTAURANT

### Guest Lounge



\*Room Service not Available



Check-in 15:00  
Check-Out 10:00



Affiliated Partner Parking Spaces Available  
(Charges Apply)



PC Corner, Vending Machines, Laundry

### USP

• Location • Sight-seeing spot • Culture

### Surrounding Attractions

• Naha Bus Terminal • Naha Kokusai Dori  
• Okinawa Cellular Stadium

Amadeus

OKANTR

Apollo/Galileo

E0023

Sabre

432097

Worldspan

OKANT

For more information, please visit us at <https://www.tokyuhotels.co.jp/en/naha-r/>