



## "Kyoto's extremity dwells in the east"

The entrance to travel to the extremities of Kyoto in Higashiyama, where you can enjoy a tasteful sensibility. THE HOTEL HIGASHIYAMA by Kyoto Tokyu Hotel will present you a deep journey. The Higashiyama area has a cultural aesthetic since the Muromachi period. Okazaki park has a group of buildings that capture the essence of western culture in early Meiji era. In the place of Higashiyama, where you can feel the diversity of cultures, the purpose of your stay is to experience the beauty that transcends time and space has been handed down to the hearts of modern Japanese people in various ways.



Check-in 14:00  
Check-Out 11:00



Utility room, Shop, Private spa,  
Tea & Bar "Sarei produced by Gion Tsujiri"



NO Parking Spaces

### USP

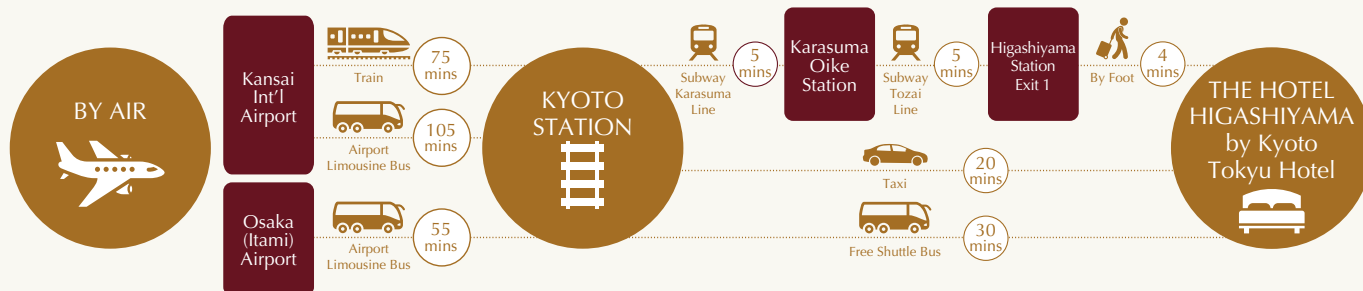
- History
- Culture
- Food

### Surrounding Attractions

- Heian Shrine
- Yasaka Shrine
- Chion-in Temple
- Kurita Shrine
- Kyocera Museum of art
- Keage Incline
- Shorei-in Temple



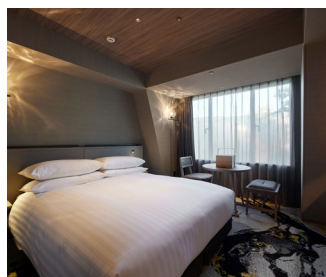
## ACCESS







# THE HOTEL HIGASHIYAMA by Kyoto Tokyu Hotel



## GUEST ROOMS INFORMATION

TYPE	NO. OF ROOM	SIZE (m <sup>2</sup> /ft <sup>2</sup> )	BED SIZE (cm)
DOUBLE	6	21~ / 226~	160x195
KING	40	23~ / 247~	180x195~
TWIN	91	21~ / 226~	90x195~
SWEET	4	57~ / 613~	220x205
UNIVERSAL TWIN	2	28~ / 301~	110x195 DOUBLE
HVC	25	26~ / 279~	110x195~

\*All Guest Rooms are equipped with Wi-Fi and LAN Access Internet Connection



## RESTAURANTS

French Cuisine [Nananoichi]	Craft Editions produced by Kyoto Museum of Crafts and Design
Tea & Bar [Sarei]	
Private Spa [Gyoku][Sen][Hou]	

Amadeus

KIXHHH

Apollo/Galileo

H2791

Sabre

285274

Worldspan

KIXHH

For more information, please visit us at <https://www.tokyuhotels.co.jp/en/higashiyama-h/>





TOKYU HOTELS

# KYOTO TOKYU HOTEL

580 Kakimoto-cho, Gojo sagaru, Horikawa-dori, Shimogyo-ku, Kyoto-shi, Kyoto 600-8519  
TEL: (81) 75-341-2411 / FAX: (81) 75-341-2488



Kyoto Tokyu Hotel, located in a traditional part of the old city, is sophisticated and graceful, in the spirit of miyabi, an aesthetic ideal akin to isolated elegance. The building won a BCS award as a contemporary structure combining traditional and modern aesthetics. Spacious guestrooms, fitted with Japanese shoji sliding doors and soft lighting, offer luxuriant relaxation to business or pleasure travelers.



Check-in 14:00  
Check-Out 11:00



Wedding Halls, Beauty Salon, Kimono Fitting Room,  
Costume Room, Photo Studio, Gift Shop, Florist,  
Nursing Room



80 Parking Spaces (Charges Apply)

## USP

- Ancient Capital of Japan
- Historic Monuments
- Geimaiko

## Surrounding Attractions

- Kyoto International Manga Museum
- Toei Kyoto Studio Park
- Hozu-Gawa River Boat Ride



## ACCESS

OSAKA  
(ITAMI)  
AIRPORT



Airport Bus

55  
mins

KYOTO  
STATION



Car

7  
mins



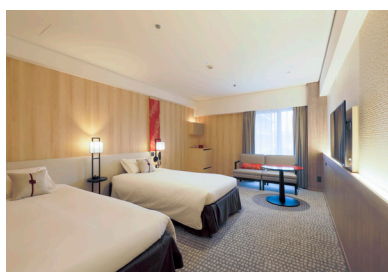
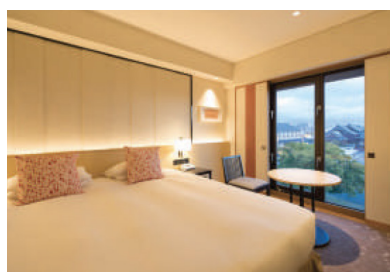
Free Hotel Shuttle Bus  
(Hachijo Exit)

10  
mins

KYOTO  
TOKYU HOTEL







## GUEST ROOMS INFORMATION

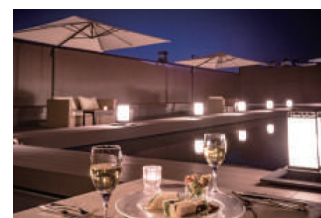
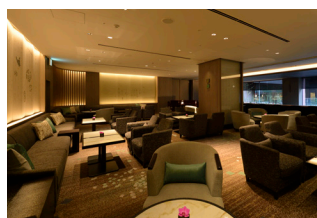
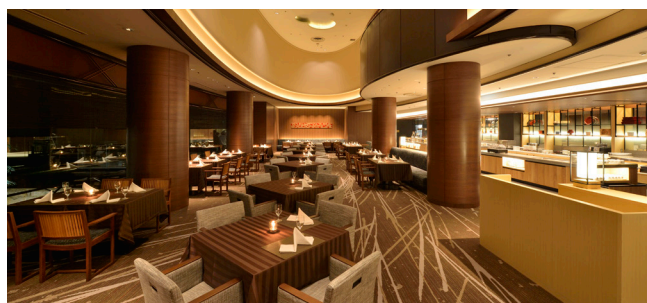
TYPE	NO. OF ROOM	SIZE (m <sup>2</sup> /ft <sup>2</sup> )	BED SIZE (cm)
SINGLE	24	21 / 226	110x195~
TWIN	243	23~ / 248~	110x195~
DOUBLE	57	21~ / 226~	160x195~
TRIPLE	75	28~ / 301~	110x195~
SUITE	6	56~ / 603~	130x203~
OTHERS	3	45~ / 484~	105x190~

\*All Guest Rooms are equipped with Wi-Fi and LAN Access Internet Connection

## BANQUET HALLS & MEETING ROOMS

NAME	AREA (m <sup>2</sup> /ft <sup>2</sup> )	HEIGHT (m/ft)	CAPACITY			
			BANQUET	RECEPTION	CLASSROOM	THEATRE
Aoi	600 / 6,458	5.2 / 17.1	380	500	450	750
Miyabimai	400 / 4,306	5.2 / 17.1	250	300	300	500
Miyabi Mai Shirabe	200 / 2,153	5.2 / 17.1	100	120	144	250
Gion	148 / 1,593	3.1 / 10.2	80	80	84	150
Kurama	139 / 1,493	3 / 9.8	80	80	84	150
Wakayama	48 / 517	2.4 / 7.9	25	-	27	40
Kibune	45 / 484	2.4 / 7.9	25	-	27	40
Mikage	41 / 441	2.4 / 7.9	25	-	20	30

\*All Banquet Halls are equipped with LAN Access Internet Connection



## RESTAURANTS

All Day Dining, KAZAHANA	Tea Lounge & Bar, HORIKAWA
Kyoto Cuisine Restaurant, TANKUMA KITAMISE: Directed by M.Kurisu	
The Terrace, HORIKAWA	Chinese Restaurant, STAR HILL
Roof Top Bar	*Room Service Available

Amadeus	Apollo/Galileo	Sabre	Worldspan
UKYOTO	16332	10517	4529

For more information, please visit us at <https://www.tokyuhotels.co.jp/en/kyoto-h/>



# OSAKA EXCEL HOTEL TOKYU

4-1-15, Kyutaromachi, Chuo-ku, Osaka, Japan  
TEL: (81) 06-6252-0109 / FAX: (81) 06-6252-3109



Our hotel concept of Osaka Kaleidoscope comprises an Interior showcasing Osaka's lively, opulent atmosphere and a brilliant kaleidoscopic night view from a high-floor front lobby and restaurant. High-floor guestrooms have a view-bath with a commanding perspective on the Midosuji nightscape.

Check-in 14:00  
Check-out 11:00

All Non-Smoking Rooms

Restaurant, Bar & Lounge, Banquet Halls & Meeting Rooms, Coin Laundry, Vending Machine

## USP

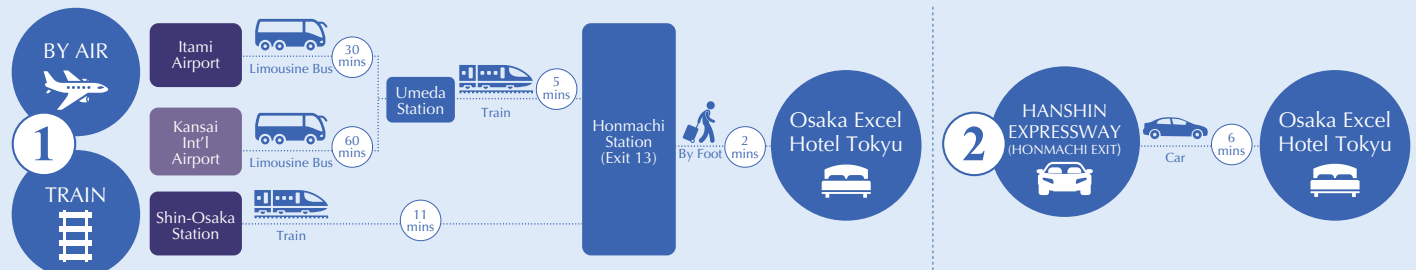
- Unprecedented integration with temple's main gate
- Optimal location for both leisure and business
- Osaka cuisine

## Surrounding Attractions

- Shinsekai & Tsutenkaku Tower
- Dotonbori
- Osaka Castle
- Universal Studios Japan™



## ACCESS







### GUEST ROOMS INFORMATION

TYPE	NO. OF ROOM	SIZE (m <sup>2</sup> /ft <sup>2</sup> )	BED SIZE (cm)
SUPERIOR DOUBLE	231	22.8 / 354	164x205
SUPERIOR TWIN	72	32.9 / 354	111x205x2
SUPERIOR TRIPLE	33	32.9 / 345	111x205x2, 110x196
JAPANESE-STYLE TWIN	21	32.9 / 345	121x205x2
THE MIDO FLOOR	6	47.3~ / 509	122x205x2
BARRIER-FREE ROOM	1	33.9 / 364	111x205x2

\*All Guest Rooms are equipped with Wi-Fi and LAN Access Internet Connection

### BANQUET HALLS & MEETING ROOMS

NAME	AREA (m <sup>2</sup> /ft <sup>2</sup> )	HEIGHT (m/ft)	CAPACITY			
			BANQUET	RECEPTION	CLASSROOM	SQUARE
The Sky Room	200 / 2152	3.4 / 11	60	80	96	42

\*All Banquet Halls are equipped with LAN Access Internet Connection

### RESTAURANTS

Japan-Wdestern Fusion, PIC • NIKA	Bar, Mido
-----------------------------------	-----------

\*Room Service not Available



Amadeus  
OSA0EH

Apollo/Galileo  
F3845

Sabre  
326993

Worldspan  
OSA0E

For more information, please visit us at <https://www.tokyuhotels.co.jp/en/osaka-e/>



# OSAKA TOKYU REI HOTEL

2-1, Doyama-cho, Kita-ku, Osaka-shi, Osaka 530-0027, Japan  
TEL: (81) 6-6315-0109 / FAX: (81) 6-6315-6019



Osaka's Umeda Station is western Japan's busiest terminal, with about 2.5 million commuters a day. The station area is a popular shopping district filled with high-rises and department stores. Landmarks like Osaka Castle and Dotonbori are a 15-minute walk away. Access to nearby cities such as Kyoto and Kobe is also convenient.

## ACCESS

BY AIR



Osaka (Itami) Airport



30 mins

Osaka Station



10 mins



By Foot\*

OSAKA TOKYU REI HOTEL



Kansai int'l Airport



60 mins

Umeda Station



## GUEST ROOMS INFORMATION

TYPE	NO. OF ROOM	SIZE (m <sup>2</sup> /ft <sup>2</sup> )	BED SIZE (cm)
SINGLE	222	12~ / 129~	From 120x195
TWIN	115	16.2~ / 174.4~	110x195
DOUBLE	65	13.7 / 147.5	140x195

\*All Guest Rooms are equipped with Wi-Fi and LAN Access Internet Connection

## RESTAURANT

Western Casual, LITTLE MONSTER



\*Room Service not Available



Check-in 15:00  
Check-Out 10:00



24 Parking Spaces (Charges Apply)



Banquet Halls, Vending Machine

### USP

• Location • Food • History & Culture

### Surrounding Attractions

• Dotonbori • Shinsekai • Osaka Castle

## BANQUET HALLS & MEETING ROOMS

NAME	AREA (m <sup>2</sup> /ft <sup>2</sup> )	HEIGHT (m/ft)	CAPACITY				
			BANQUET	RECEPTION	CLASSROOM	THEATRE	SQUARE
Oak (Divisible)	160 / 1722	2.8 / 9.2	80	100	120	160	60
Maple	53 / 570	2.8 / 9.2	30	30	30	50	30

\*All Banquet Halls are equipped with Wi-Fi Internet Connection

Amadeus	Apollo/Galileo	Sabre	Worldspan
OSA0TH	D9682	315522	OSA0T

For more information, please visit us at <https://www.tokyuhotels.co.jp/en/osaka-r/>



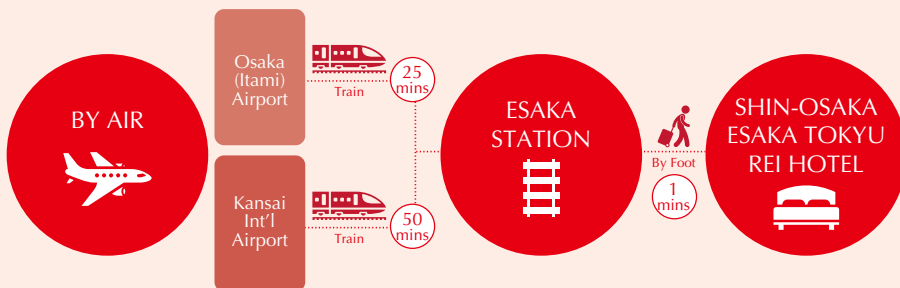
# SHIN-OSAKA ESAKA TOKYU REI HOTEL

9-6, Toyotsu-cho, Suita-shi, Osaka 564-0051, Japan  
TEL: (81) 6-6338-0109 / FAX: (81) 6-6338-8010



Esaka is a city along the Midosuji subway line, a major transportation link between southern and northern Osaka. Key city locations like central Umeda and Minami, as well as Universal Studios Japan, can easily be reached within 30 minutes, making Esaka an ideal hub for business and entertainment. Guestrooms are simple and subtle for a relaxing stay.

## ACCESS



## GUEST ROOMS INFORMATION

TYPE	NO. OF ROOM	SIZE (m <sup>2</sup> /ft <sup>2</sup> )	BED SIZE (cm)
SINGLE	210	14.6 / 157	140x195
TWIN	133	18.4 / 198.1	110x195
DELUXE TWIN	8	36.7 / 395	110x195
DOUBLE	12	18.4 / 198.1	180x195

\*All Guest Rooms are equipped with Wi-Fi and LAN Access Internet Connection

## RESTAURANT

### Delicious Kitchen EMONDEL



\*Room Service not Available



Check-in 15:00  
Check-out 11:00



330 Parking Spaces (Charges Apply)



Wedding Halls, Vending Machines

### USP

• Location • Food • Shopping

### Surrounding Attractions

• Expo Memorial Park • Meiji no mori Mino Quasi-National Park (Mino Waterfall) • Universal Studio Japan • Expoity

## BANQUET HALLS & MEETING ROOMS

NAME	AREA (m <sup>2</sup> /ft <sup>2</sup> )	HEIGHT (m/ft)	CAPACITY				
			BANQUET	RECEPTION	CLASSROOM	THEATRE	SQUARE
Ballroom (Divisible)	414 / 4456	5 / 16.4	250	400	357	520	102
Cosy	109 / 1173	2.7 / 8.9	60	70	90	110	48
Rose (Divisible)	74 / 797	2.7 / 8.9	40	40	60	77	42
Miyabi	47 / 506	2.7 / 8.9	30	30	30	56	30
Maple	36 / 388	2.7 / 8.9	14	20	24	35	18

\*All Banquet Halls are equipped with Wi-Fi Internet Connection

Amadeus	Apollo/Galileo	Sabre	Worldspan
OSASOH	D9676	315508	OSASO

For more information, please visit us at <https://www.tokyuhotels.co.jp/en/esaka-r/>



# KOBE SANNOMIYA TOKYU REI HOTEL

6-1-5, Kumoidori, Chuo-ku, Kobe-shi, Hyogo 651-0096, Japan  
TEL: (81) 78-291-0109 / FAX: (81) 78-221-2917



Sannomiya preserves to this day European-style streets where stylish boutiques and cafes are ever-present. Nearby tourist hotspots such as the beautifully lit bay and Mt. Rokko, boasting a beautiful night scape, are also easily accessed. The hotel is just two minutes from JR Sannomiya. Bright, crisp interiors define the guestroom decor.

**Check-in** 15:00  
**Check-Out** 11:00

**Affiliated Car Parks (Charges Apply)**

**Banquet Halls, Vending Machine**

**USP**

- Great Accessibility
- Tourist Spot

**Surrounding Attractions**

- Kobe Harborland
- Kobe Nunobiki Herb Gardens & Ropeway
- Kobe circle bus "City Loop"

## ACCESS



Osaka (Itami) Airport



40 mins

Kansai Int'l Airport



65 mins

SANNOMIYA STATION



By Foot\*

2 mins

KOBE SANNOMIYA TOKYU REI HOTEL

\* JR Sannomiya Station East Exit

## GUEST ROOMS INFORMATION

TYPE	NO. OF ROOM	SIZE (m <sup>2</sup> /ft <sup>2</sup> )	BED SIZE (cm)
SINGLE	100	14.9~ / 160~	From 110x195~
TWIN	86	18.4~ / 198~	From 110x195~
DOUBLE	35	16.7~ / 180~	140x195
TRIPLE	12	19~ / 205~	110x195
OTHERS	2	36.7 / 395	120x195

\*All Guest Rooms are equipped with Wi-Fi and LAN Access Internet Connection

## RESTAURANT

Fine Dining & Lounge, TORIKO



\*Room Service not Available

## BANQUET HALLS & MEETING ROOMS

NAME	AREA (m <sup>2</sup> /ft <sup>2</sup> )	HEIGHT (m/ft)	CAPACITY				
			BANQUET	RECEPTION	CLASSROOM	THEATRE	SQUARE
Ballroom (Divisible)	290 / 3122	4.5 / 14.7	168	220	180	252	72
Rose	88 / 947	2.7 / 8.9	60	50	42	90	36
Maple	66 / 710	2.6 / 8.5	34	40	36	56	-
Jasmine	30 / 323	2.5 / 8.2	16	-	-	24	-
Olive	28 / 301	2.5 / 8.2	12	-	-	18	-
Lavender	23 / 248	3 / 9.8	12	-	-	18	-

\*All Banquet Halls are equipped with Wi-Fi Internet Connection

Amadeus	Apollo/Galileo	Sabre	Worldspan
UKBKST	E0021	407992	UKBKS

For more information, please visit us at <https://www.tokyuhotels.co.jp/en/kobesannomiya-r/>



# KOBE MOTOMACHI TOKYU REI HOTEL

1-2-35, Sakaemachi-dori, Chuo-ku, Kobe-shi, Hyogo 650-0023, Japan  
TEL: (81) 78-327-0109 / FAX: (81) 78-327-0701



Kobe is an international port town with both a retro and modern feel, boasting highlights like the former settlement area and Port Tower. It's a major metropolis with the advantage of ocean and mountain surroundings, offering a broad choice of sightseeing hot spots. The hotel is close to two stations, an ideal location both for business travelers and those wanting to tour city streets on foot.

## ACCESS

### 1 BY TRAIN

Motomachi Station



By Foot

3 mins

Kyukyoryuchi-Daimarumae Station

By Foot \*Exit 1

1 mins

Sannomiya Station

By Foot \*West Exit 1

15 mins

KOBE  
MOTOMACHI  
TOKYU  
REI HOTEL



### 2 BY AIR

Knasai Int'l Airport



Airport Bus

65 mins

Sannomiya Station

By Foot \*West Exit 1

15 mins

KOBE  
MOTOMACHI  
TOKYU  
REI HOTEL



## GUEST ROOMS INFORMATION

TYPE	NO. OF ROOM	SIZE (m <sup>2</sup> /ft <sup>2</sup> )	BED SIZE (cm)
SINGLE	115	17.6 / 194	140x195
TWIN	36	23 / 248	121x195
DOUBLE	39	17.6 / 189	160x195
DELUXE TWIN (BARRIER-FREE)	1	35.3 / 380	121x195

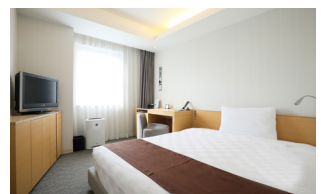
\*All Guest Rooms are equipped with Wi-Fi and LAN Access Internet Connection

## RESTAURANT

### Guest Lounge



\*Room Service not Available



Check-in 15:00  
Check-Out 10:00



Affiliated parking Spaces (Charges Apply)



Laundry Room, PC Corner,  
Vending Machines

### USP

- Location
- Multifunctional Shower
- Original bed

### Surrounding Attractions

- Chinatown
- Mount Rokko
- Kobe Beef Restaurants
- Port of Kobe

Amadeus

UKBKMT

Apollo/Galileo

E0020

Sabre

439939

Worldspan

UKBKM

For more information, please visit us at <https://www.tokyuhotels.co.jp/en/kobemotomachi-r/>