

THE CAPITOL HOTEL TOKYU

2-10-3 Nagata-cho, Chiyoda-ku, Tokyo 100-0014, Japan
TEL: (81) 3-3503-0109 / FAX: (81) 3-3503-0309



Conveniently set in Nagatacho, Tokyo's center and close to the Imperial Palace, House of Parliament, and popular Marunouchi, Ginza and Roppongi districts, the hotel is in a great location for jogging around the palace or visiting adjacent Hie Shrine. The Shinto site, built in 1659, offers wonderful year-round strolls amid lush greenery. With such surroundings, The Capitol Hotel Tokyu is your calm oasis from the bustling metropolis.



Check-In 15:00
Check-Out 12:00



Beauty Salon with Kimono Fitting Service, Photo Studio, Florist, Spa & Barber, Fitness Gym, Indoor Swimming Pool, Business Center



150 Parking Spaces (Charges Apply)

USP

- The Centre of Japan
- Great Accessibility
- A Balance of both Western and Japanese

Surrounding Attractions

- National Diet Building (House of Parliament)
- Tokyo Imperial Palace
- Nezu Museum



ACCESS

1

BY AIR



Haneda Airport



Airport Limousine Bus



35 mins

Narita Airport



Airport Limousine Bus



100 mins

THE CAPITOL HOTEL TOKYU



2

BY TRAIN



Tameike-Sanno Station

Kokkai-Gijidomae Station

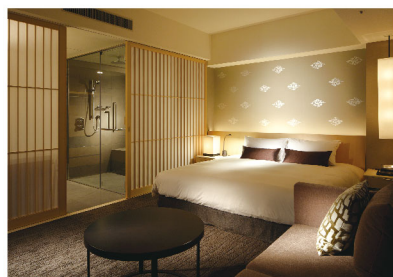


By Foot

Direct Access

THE CAPITOL HOTEL TOKYU





GUEST ROOMS INFORMATION

TYPE	NO. OF ROOMS	SIZE (m ² /ft ²)	BED SIZE (cm)
DOUBLE	188	44.8 / 482~	From 200x200
TWIN	49	44.8 / 482	From 120x200
SUITE	14	104.7 / 1127	From 200x200

*All Guest Rooms are equipped with Wi-Fi and LAN Access Internet Connection

BANQUET HALLS & MEETING ROOMS

NAME	AREA (m ² /ft ²)	HEIGHT (m/ft)	CAPACITY				
			BANQUET	RECEPTION	CLASSROOM	THEATRE	SQUARE
Ho'oh (Divisible)	540 / 5813	5.5 / 18	280	400	300	500	120
Kiri (Divisible)	180 / 1938	3 / 10	90	80	80	170	54
Fuji	52 / 560	2.8 / 9	30	30	24	50	24
Sakura	52 / 560	2.8 / 9	30	30	24	50	24
Tachibana	52 / 560	2.8 / 9	30	30	24	50	24

*All Banquet Halls are equipped with Wi-Fi and LAN Access Internet Connection



RESTAURANTS

Japanese Restaurant, SUIREN	Lounge, ORIGAMI
Chinese Restaurant, STAR HILL	Bar, THE CAPITOL BAR
All Day Dining, ORIGAMI	Pastery Boutique, ORIGAMI

*Room Service Available

Amadeus	Apollo/Galileo	Sabre	Worldspan
TYOCHT	4919	10518	TYOCH

For more information, please visit us at <https://www.capitolhoteltokyu.com/en/>

CERULEAN TOWER TOKYU HOTEL


26-1 Sakuragaoka-cho, Shibuya-ku, Tokyo 150-8512, Japan
TEL: (81) 3-3476-3000 / Fax: (81) 3-3476-3001



Cerulean Tower Tokyu Hotel is a landmark of trendsetting Shibuya, where Tokyo's culture and fashion begins and never ends. Contemporary guestrooms provide great comfort and relaxation. All upper-floors guest rooms and the Tower's Restaurant and Bar offer breath-taking views while the lounge being located at lower-floors provide you with a beautiful scenery of each season through the view of the "Kanzatei" Japanese Garden. You may also get a chance to see The Noh Theatre which is mainly for Japanese traditional performance such as Noh and Kyogen.

 Check-In 14:00
Check-Out 12:00

 375 Parking Spaces (Charges Apply)

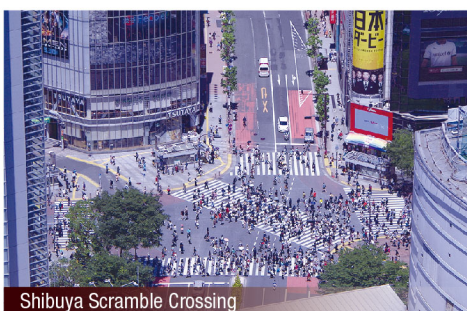
 Wedding Halls, Beauty Salon with Kimono Fitting Services, Costume Salon, Photo Studio, Fitness Gym, Indoor Swimming Pool, Esthetic Salon, Noh Theatre, Jazz Club, Nursery Room, Business Salon, Executive Lounge

USP

- Location
- View
- Cuisine

Surrounding Attractions

- Shibuya Scramble Crossing
- Shibuya 109, Tokyu Hands
- Mt. Fuji



ACCESS

1

BY AIR



Haneda
Airport



Airport Limousine Bus

60
mins

Narita
Airport



Airport Limousine Bus

85
mins

CERULEAN
TOWER TOKYU
HOTEL



2

SHIBUYA
STATION

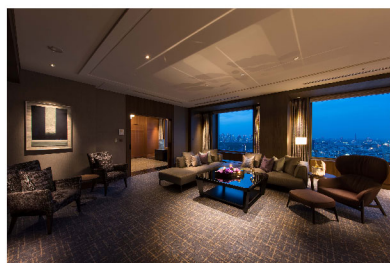
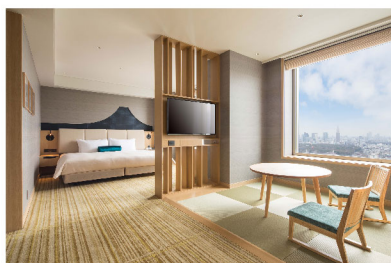


By Foot

5
mins

CERULEAN
TOWER TOKYU
HOTEL





GUEST ROOMS INFORMATION

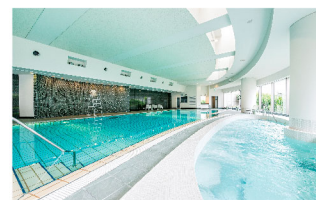
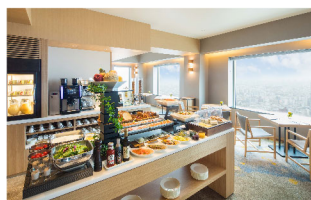
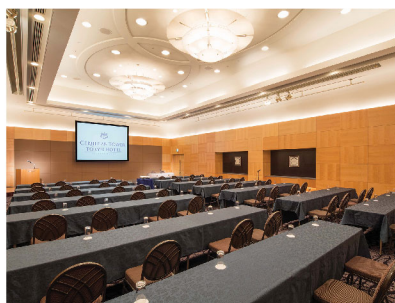
TYPE	NO. OF ROOMS	SIZE (m ² /ft ²)	BED SIZE (cm)
SINGLE	33	28~ / 301~	From 140x205
TWIN	133	37~ / 398~	From 120x205
DOUBLE	228	31~ / 334~	From 160x205
SUITE	12	59~ / 635~	From 120x205
JAPANESE STYLE	2	60~ / 646~	From 120x205

*All Guest Rooms are equipped with Wi-Fi and LAN Access Internet Connection

BANQUET HALLS & MEETING ROOMS

NAME	AREA (m ² /ft ²)	HEIGHT (m/ft)	CAPACITY			
			BANQUET	RECEPTION	CLASSROOM	THEATRE
Ballroom (Divisible)	1430 / 15392	7.2 / 23.6	700	1300	850	1400
Shirotae	100 / 1076	4.1 / 13.5	50	60	60	80
Asagiri	200 / 2153	5.6 / 18.4	80	110	120	150
Yayoi	100 / 1076	4.1 / 13.5	50	60	60	80
Sawarabi	70 / 753	3.1 / 10.2	30	30	40	45
Moegi	80 / 861	3.1 / 10.2	40	40	45	50
Momiji	76 / 818	3.1 / 10.2	30	30	40	45
Yamabuki	60 / 646	3.1 / 10.2	20	20	30	35
Lunare	190 / 2045	3.5 / 11.5	80	100	70	120
Solare	135 / 1453	3.5 / 11.5	60	80	50	100
Celeste	100 / 1076	3.5 / 11.5	40	50	40	60

*All Banquet Halls are equipped with LAN Access Internet Connection



RESTAURANTS

Garden Kitchen, CARAMELO	Provencal Cuisine Tower's Restaurant, COUCAGNO
Garden Lounge, ZABOU	Tower's Bar, BELLOVISTO
Japanese Restaurant, KANETANAKA SO	Jazz Club, JZ Brat
Chinese Szechwan Restaurant, CHEN	Sushi, ITO IKKAN
Teppanyaki, SAKURA	*Room Service Available
Cigar Bar, R261 CIGAR & ROCK	

Amadeus	Galileo	Sabre	Worldspan
PH NRTCTT	PH 35091	PH 57666	PH NRTCT

For more information, please visit us at <https://www.tokyuhotelsjapan.com/global/cerulean-h/index.html>

THE YOKOHAMA BAY HOTEL TOKYU

2-3-7 Minatomirai, Nishi-ku, Yokohama-shi, Kanagawa 220-8543, Japan
TEL: (81) 45-682-2222 / FAX: (81) 45-682-2223



Not only is this a convenient city hotel just a minute away from Minato Mirai station, it almost feels like an island resort hotel, too, with ocean-view guestrooms offering a panorama of Yokohama Port. Guestrooms are spacious—more than 40 square meters—and furnished stylishly and elegantly with a blue theme, like the ocean nearby.



Check-In 14:00
Check-Out 11:00



1700 Parking Spaces (Charges Apply)



Wedding Halls, Beauty Salon, Costume Salon,
Photo Studio, Esthetic & Spa, Indoor Swimming Pool,
Dry Sauna, Esthetic Salon, Florist, Nursery Room

USP

- Location
- Urban Resort
- Cuisine

Surrounding Attractions

- Cup Noodle Museum
- Yokohama Red Brick Warehouse
- Yokohama Minatomirai Manyo Club



Yokohama Red Brick



ACCESS

1

BY AIR



Haneda
Airport



Airport Limousine Bus

35
mins

Narita
Airport



Airport Limousine Bus

90
mins

THE
YOKOHAMA
BAY HOTEL
TOKYU



2

MINATO-MIRAI
STATION

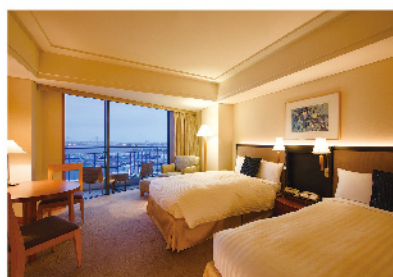


By Foot

1
min

THE
YOKOHAMA
BAY HOTEL
TOKYU





GUEST ROOMS INFORMATION

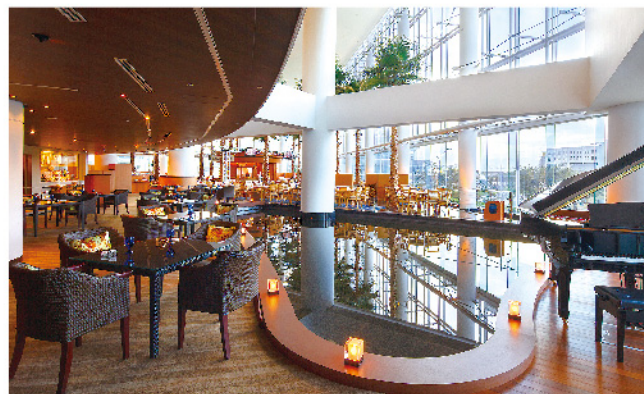
TYPE	NO. OF ROOMS	SIZE (m ² /ft ²)	BED SIZE (cm)
Twin	394	38~ / 409	From 97x203
Double	51	38~ / 409	From 200x203
Triple	14	49~ / 527	From 97x203
Suite	21	92~ / 990	From 120x203

*All Guest Rooms are equipped with Wi-Fi and LAN Access Internet Connection

BANQUET HALLS & MEETING ROOMS

NAME	AREA (m ² /ft ²)	HEIGHT (m/ft)	CAPACITY				
			BANQUET	RECEPTION	CLASSROOM	THEATRE	SQUARE
Queen's	1193 / 12841	7.2 / 23.6	770	1,200	890	1,400	190
Ambassador's	449 / 4833	4.5 / 14.8	280	380	310	500	100
Admiral	99 / 1066	4.5 / 14.8	50	60	50	110	36
Prince	158 / 1701	4.0 / 13.1	90	100	90	200	54
Princess	71 / 764	4.0 / 13.1	40	40	36	60	24
Pacific Room	166 / 1787	2.7 / 8.8	40	50	-	-	-

*All Banquet Halls are equipped with Wi-Fi and LAN Access Internet Connection



RESTAURANTS

French Restaurant, QUEEN ALICE	Japanese Restaurant, OSHIMA
Chinese Restaurant, TURANDOT	Lounge, SOMERHOUSE
Western Casual, CAFÉ TOSCA	Bar, JACK'S

*Room Service Available

Amadeus	Apollo/Galileo	Sabre	Worldspan
YOKPFH	83857	37278	YOKPF

For more information, please visit us at <https://ybht.co.jp/en/>

TOKYO BAY TOKYU HOTEL

7-2-3, Hinode, Urayasu City, Chiba 279-0013, Japan
TEL: (81) 47-390-0109 / FAX: (81) 47-314-8071



Bayfront suite with subtle elements of elegant canvas sails faces an expansive view of Tokyo Bay through dazzling window walls, all set in an open-design layout. Step inside the room and experience a high-rise perspective, or enjoy early morning seascapes from beds facing the windows. In these ways and more, you'll experience refined living in an open space of distinct aesthetic.

 Check-In 15:00
Check-Out 12:00

 Concierge Desk, Kids Room, Convenience Store,
Coin Laundry, Nursing Room, Smoking Room

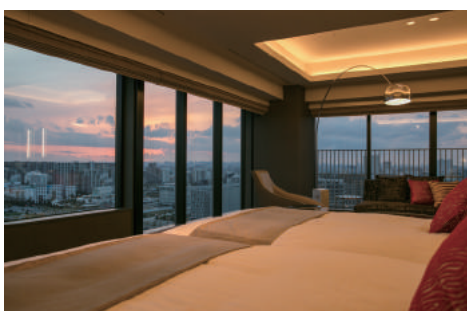
 339 Parking Spaces (Charges Apply)

USP

- Great accessibility to Tokyo Disney Resort®
- Stunning Room Views
- Hotel Concept: Collection of Sea

Surrounding Attractions

- Tokyo Disney Resort®
- Ikspiari
- LaLaport Tokyo-Bay



ACCESS

1

BY AIR



Narita
Airport



60-85
mins



40-70
mins

TOKYO BAY
TOKYU HOTEL



2

SHIN-URAYASU
STATION

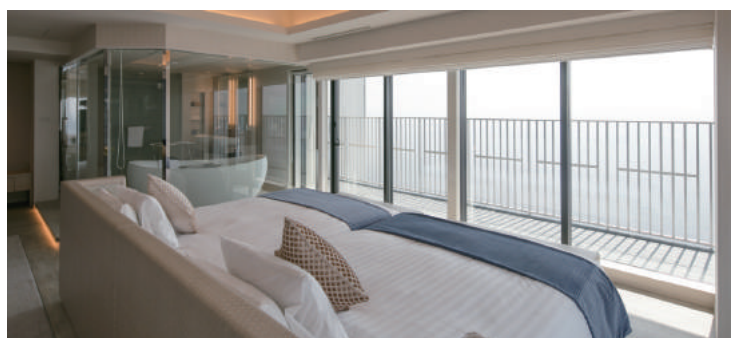


Free
Shuttle Bus

10
mins

TOKYO BAY
TOKYU HOTEL





GUEST ROOMS INFORMATION			
TYPE	NO. OF ROOMS	SIZE (m ² /ft ²)	BED SIZE (cm)
Twin	116	32~ / 344~	From 110x203
Triple	230	32~ / 344~	From 110x188
Fourth	236	38~ / 409~	From 110x188
Special Concept	56	32~ / 344~	From 80x195

*All Guest Rooms are equipped with Wi-Fi and LAN Access Internet Connection

BANQUET HALLS & MEETING ROOMS							
NAME	AREA (m ² /ft ²)	HEIGHT (m/ft)	CAPACITY				
			BANQUET	RECEPTION	CLASSROOM	THEATRE	SQUARE
Ocean (Divisible)	495 / 5328	3.75 / 12.3	280	300	180	330	110

*All Banquet Halls are equipped with Wi-Fi and LAN Access Internet Connection

RESTAURANTS	
All Day Dining, CORAL TABLE 06:30 – 10:00 (L.O. 09:30) / 11:30 – 15:00 (L.O. 14:30) 17:30 – 21:00 (L.O. 20:30) / 21:30 – 24:00 (L.O. 23:30)	UMIKAZE TERRACE 17:30-21:00 (L.O.20:30) *Only during the summer

*Room Service Not Available



Amadeus	Apollo/Galileo	Sabre	Worldspan
TYOTBR	E6206	321046	HNDTB

For more information, please visit us at <https://www.tokyuhotelsjapan.com/global/tokyobay-h/>

AKASAKA EXCEL HOTEL TOKYU

2-14-3 Nagata-cho, Chiyoda-ku, Tokyo 100-0014, Japan
TEL: (81) 3-3580-2311 / FAX: (81) 3-3580-6066



Akasaka is an exciting part of the city comprising business and entertainment districts—high-end dining, bars, and clubs are a short walk from major corporate offices. Shibuya, Ginza, and Roppongi districts are also easily accessed. Guestrooms have a distinctly Japanese essence while being modern and functional, a comfortable environment for business or pleasure travelers set in a prime location.



Check-In 14:00
Check-Out 11:00

Florist, Sundries, Beauty Salon, Clothing Store,
Convenience Store

67 Parking Spaces (Charges Apply)

USP

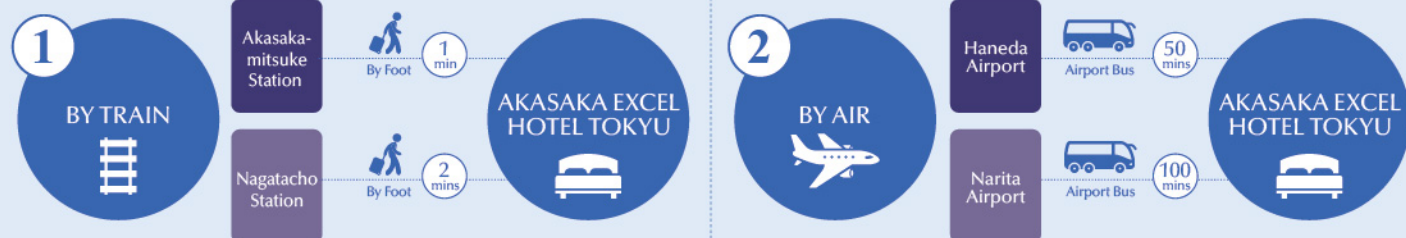
- Centre of Tokyo
- In front of Station
- Numerous Restaurants

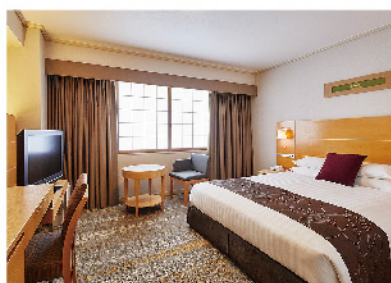
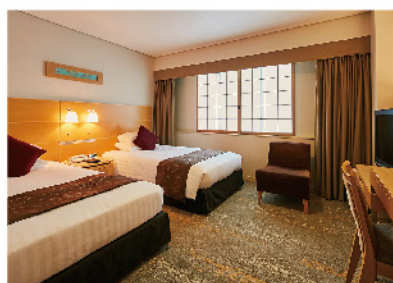
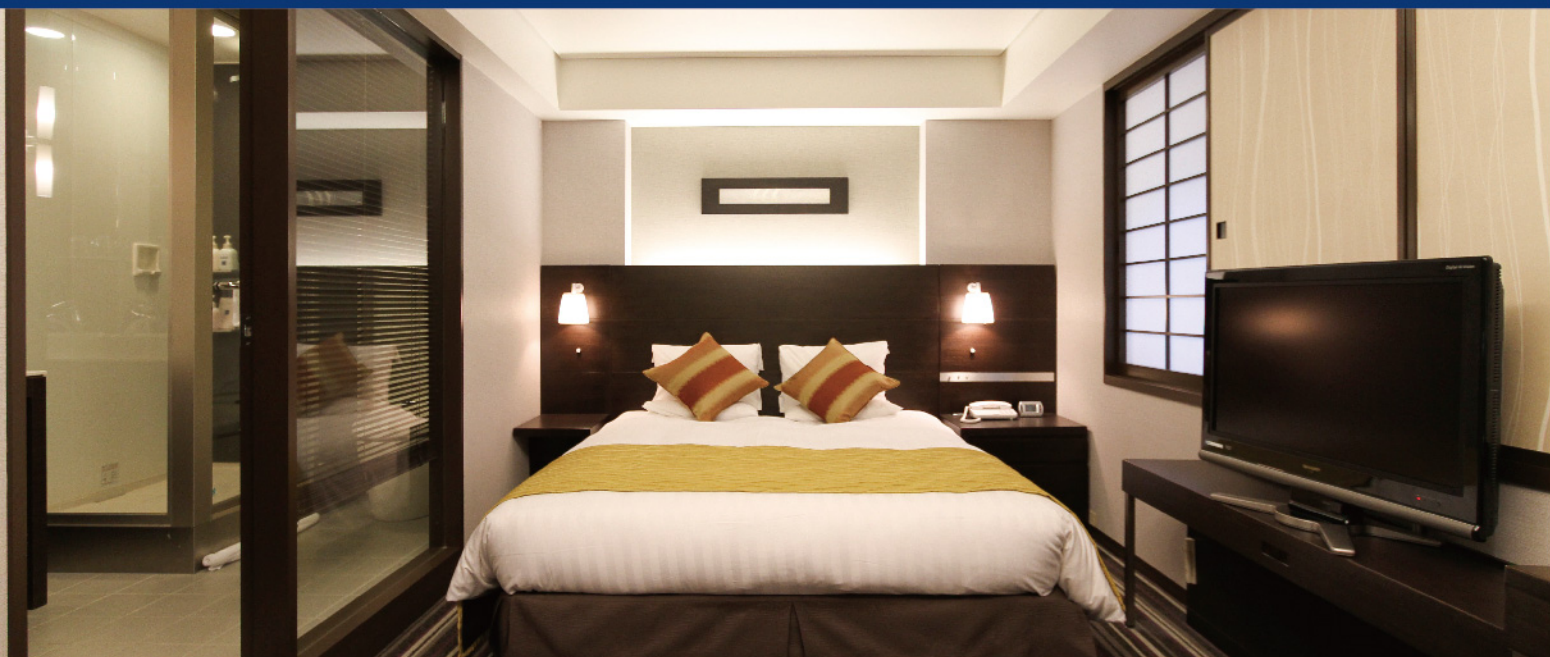
Surrounding Attractions

- Bic Camera, Don Quijote (Opening in 2018)
- National Diet Building
- Akasaka Palace
- Hie Shrine



ACCESS





GUEST ROOMS INFORMATION

TYPE	NO. OF ROOMS	SIZE (m ² /ft ²)	BED SIZE (cm)
Single	111	15~ / 161~	From 120x195
Twin	209	22~ / 237~	From 110x195
Double	158	22~ / 237~	From 160x195
Suite	4	56~ / 603~	From 120x205
Other	5	22~ / 237~	From 140x195

*All Guest Rooms are equipped with Wi-Fi and LAN Access Internet Connection

BANQUET HALLS & MEETING ROOMS

NAME	AREA (m ² /ft ²)	HEIGHT (m/ft)	CAPACITY			
			BANQUET	RECEPTION	CLASSROOM	THEATRE
Hikari	66 / 689	2.3 / 7.5	30	40	36	60
Miyabi	44 / 474	2.3 / 7.5	18	20	18	36
Mai	44 / 474	2.3 / 7.5	18	20	18	36
Hana	44 / 474	2.3 / 7.5	10	-	-	-

*All Banquet Halls are equipped with Wi-Fi and LAN Access Internet Connection



RESTAURANTS

Buffet and Dining Restaurant, AKASAKA SQUARE DINING

Japanese Restaurant, AKASAKA ZIPANGU

Bar, AKASAKA ZIPANGU

*Room Service Available

Amadeus	Apollo/Galileo	Sabre	Worldspan
TYOAEH	3963	10349	TYOAE

For more information, please visit us at https://www.tokyuhotelsjapan.com/en/hotel/TE/TE_AKASA/index.html

SHIBUYA EXCEL HOTEL TOKYU

Shibuya Mark City Building 1-12-2 Dogenzaka, Shibuya-ku, Tokyo 150-0043, Japan
TEL: (81) 3-5457-0109 / FAX: (81) 3-5457-0309



This hotel towers above the exciting, vibrant Shibuya district and offers splendid panoramic views of the surrounding city. Guestrooms of natural décor and modern touches provide relaxation, while unique restaurants offer fine dining. What's more, Shibuya Excel is conveniently located with direct walkway access to Shibuya Station.

 Check-In 14:00
Check-Out 11:00

 Restaurants, Conference and Banquet Halls,
Vending Machines

 362 Parking Spaces (Charges Apply)

USP

- Excellent Location- Connected to Shibuya Station
- A Landmark of Shibuya
- A Place of new and exciting culture

Surrounding Attractions

- Scramble Crossing
- Hachiko
- Shibuya 109



ACCESS

1

SHIBUYA
STATION



SHIBUYA EXCEL
HOTEL TOKYU



2

BY AIR



Haneda
Airport



40-60
mins

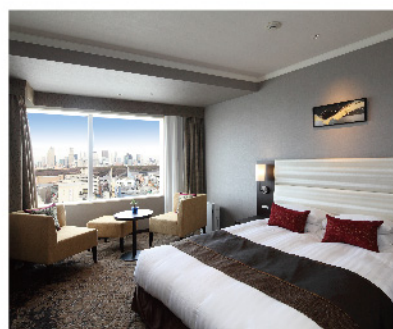
Narita
Airport



85
mins

SHIBUYA EXCEL
HOTEL TOKYU





GUEST ROOMS INFORMATION

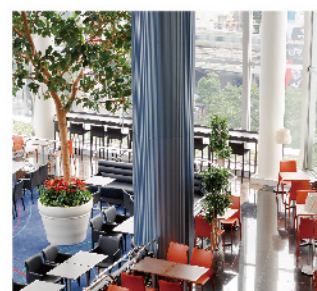
TYPE	NO. OF ROOMS	SIZE (m ² /ft ²)	BED SIZE (cm)
Single	151	20 / 215	From 120x195
Twin	151	30~ / 323~	From 120x195
Double	79	20~ / 215~	From 160x195
Triple	17	34~ / 366~	From 120x195
Suite	1	95 / 1023	120x195
Other	9	40~ / 431~	From 97x195

*All Guest Rooms are equipped with Wi-Fi and LAN Access Internet Connection

BANQUET HALLS & MEETING ROOMS

NAME	AREA (m ² /ft ²)	HEIGHT (m/ft)	CAPACITY				
			BANQUET	RECEPTION	CLASSROOM	THEATRE	SQUARE
Planets (Divisible)	266 / 2863	3.2 / 10.5	160	200	180	294	78
Forest (Divisible)	124 / 1335	3.2 / 10.5	60	80	54	84	42
Wood (Divisible)	57 / 614	3.2 / 10.5	30	40	30	49	30
Leaf	20 / 215	3.2 / 10.5	-	-	-	-	10

*All Banquet Halls are equipped with Wi-Fi and LAN Access Internet Connection



RESTAURANTS

Japanese Restaurant, SHUNSAI

French Restaurant, A BIENTOT

Café Lounge, ESTACION CAFÉ

*Room Service Available

Amadeus

TYOSEH

Apollo/Galileo

52316

Sabre

43742

Worldspan

TYOSE

For more information, please visit us at https://www.tokyuhotelsjapan.com/en/hotel/TE/TE_SHIBU/index.html

SHIBUYA STREAM EXCEL HOTEL TOKYU

3-21-3, Shibuya, Shibuya-ku, Tokyo 150-0002, Japan
TEL: (81) 3-3406-1090 / FAX: (81) 3-3407-1711



"From Shibuya to the World, a hotel that inspires your sensibility ~The SHIBUYA SENSIBILITY~".
Shibuya has long been regarded as the center of fashion and culture, the place where new ideas and trends are adopted and incorporated into its own distinctive culture and creativity. Shibuya Excel Hotel Tokyu is inspired by Shibuya's unique culture and is incorporated into the hotel's design.



Check-In 14:00
Check-Out 11:00
 JPY 2,400 / 24H
06:50~24:00 (Last Entry: 23:30)

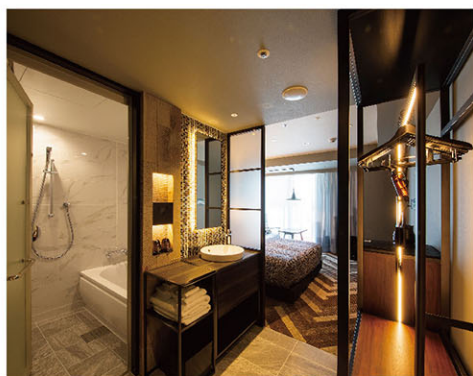
Vending Machine, Laundry, Show Polish Items,
Cycling Machine, Strech Mat

USP

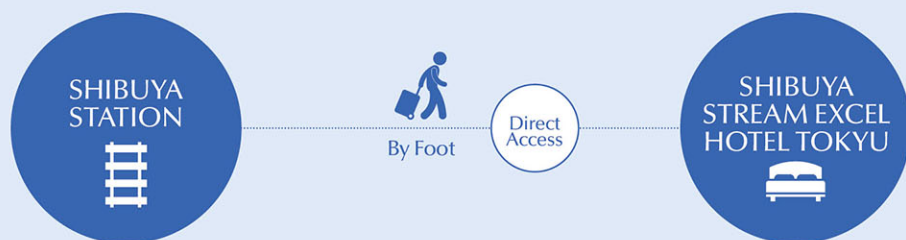
- Direct Access from Station
- Spacious Rooms
- Night Scenery

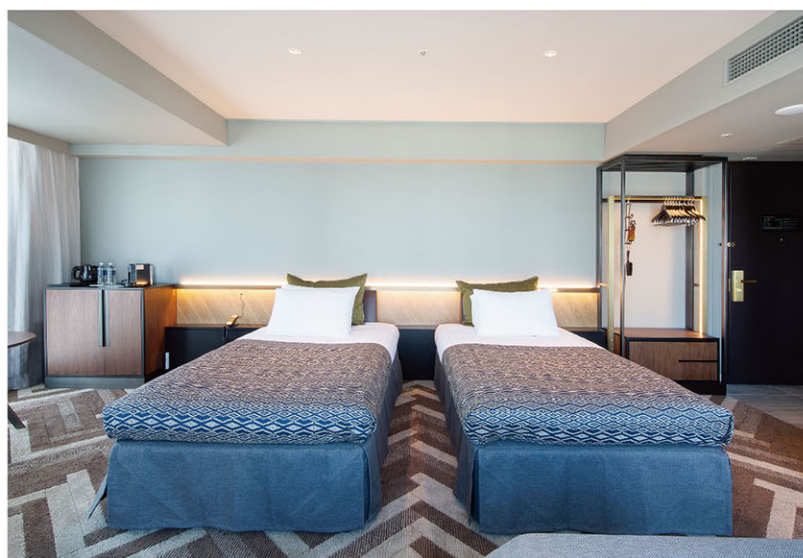
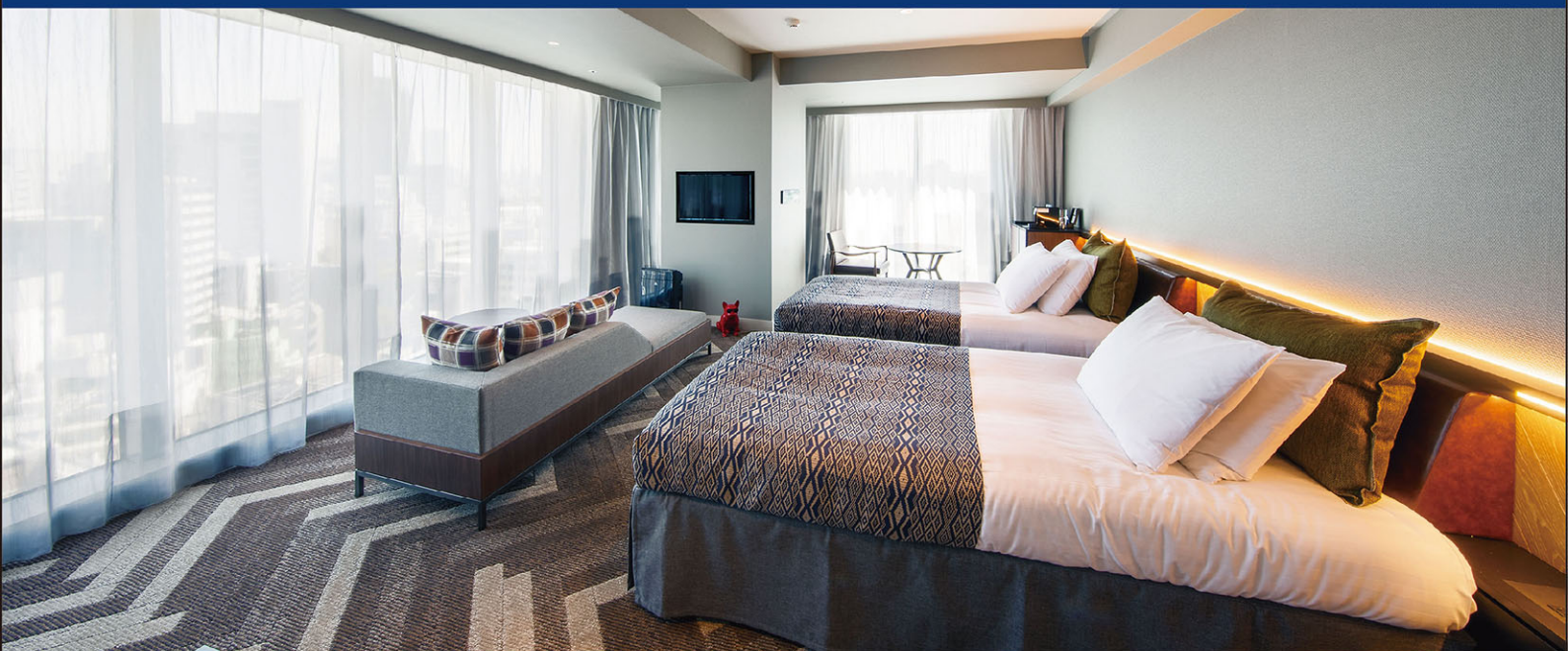
Surrounding Attractions

- Scramble Crossing
- Hachiko
- Shibuya 109



ACCESS





GUEST ROOMS INFORMATION

TYPE	NO. OF ROOMS	SIZE (m ² /ft ²)	BED SIZE (cm)
Single	25	20 / 215	140x195
Double	99	24.8~ / 267~	From 160x195
Twin	49	30~ / 323~	From 110x195
Barrier Free	4	30~ / 323~	From 110x195

*All Guest Rooms are equipped with Wi-Fi Internet Connection

RESTAURANTS

Bar & Dining, **TORRENT**

*Room Service Not Available



Amadeus
TYOSSH

Apollo/Galileo
E7441

Sabre
321770

Worldspan
TYOSS

For more information, please visit us at <https://www.tokyuhotelsjapan.com/global/stream-e/guide/index.html>

HANEDA EXCEL HOTEL TOKYU

3-4-2 Haneda Airport, Ota-ku, Tokyo 144-0041, Japan
TEL: (81) 3-5756-6000 / FAX: (81) 3-5757-0706



Being an airport hotel directly connected to Haneda Airport Domestic Terminal 2, it goes without saying that accessibility is superb from the hotel. Some of the guest room windows offer direct, nearly in-your-face, views of jet planes taking off to the blue sky. Not to worry, though: all rooms are soundproofed and very quiet.



Check-In 14:00
Check-Out 11:00



Restaurants, Function Rooms, Domestic Flight Information, Vending Machines



Parking Spaces in Haneda Airport only
(Charges Apply)

USP

- Convenience - Direct Access from Terminal 2
- A variety of Breakfast options
- Quiet and Relax Area in the bustling airport

Surrounding Attractions

- Keihin-Jima Tsubasa Park
- Anamori Inari Shrine
- Haneda Shrine



Terminal 2 Observation Deck



International Terminal [Edo Koji] ©T/AT



Anamori Inari Shrine

ACCESS

BY AIR



Haneda Airport
Passenger Terminal 2
(Departure Lobby)

Narita Airport



Direct Access



Airport Bus

75 mins

HANEDA EXCEL
HOTEL TOKYU





GUEST ROOMS INFORMATION

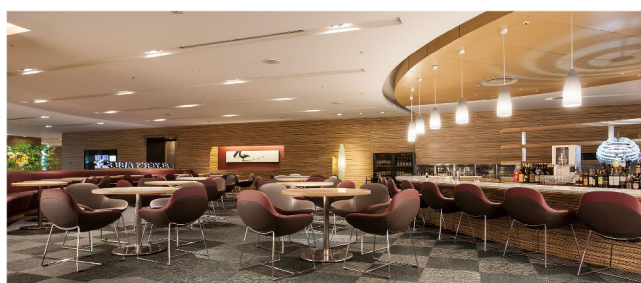
TYPE	NO. OF ROOMS	SIZE (m ² /ft ²)	BED SIZE (cm)
Single	140	17~ / 183~	From 120x200
Twin	187	23~ / 248~	From 120x200
Double	50	21~ / 226~	From 160x200
Triple	3	31~ / 334~	110x200
Suite	2	59~ / 635~	From 120x200
Other	4	38~ / 409~	From 110x200

*All Guest Rooms are equipped with Wi-Fi and LAN Access Internet Connection

BANQUET HALLS & MEETING ROOMS

NAME	AREA (m ² /ft ²)	HEIGHT (m/ft)	CAPACITY				
			BANQUET	RECEPTION	CLASSROOM	THEATRE	Conference
Wing Room (Divisible)	68 / 732	3 / 9.8	20	50	48	80	42
Meeting Room	13.7 / 147	3 / 9.8	-	-	-	-	8

*All Banquet Halls are equipped with Wi-Fi and LAN Access Internet Connection



RESTAURANTS

Café and Dining, THE FLYER'S TABLE

*Room Service Available: 5:00~24:00 (L/O23:30)



Amadeus	Apollo/Galileo	Sabre	Worldspan
TYOHEH	20861	34222	TYOHE

For more information, please visit us at https://www.tokyuhotelsjapan.com/en/hotel/TE/TE_HANED/index.html

FUTAKOTAMAGAWA EXCEL HOTEL TOKYU

30F Futako Tamagawa Rise, 1-14-1 Tamagawa, Setagaya-ku, Tokyo 158-0094, Japan
TEL: (81) 3-3700-1093 / FAX: (81) 3-3700-1098



Eleven minutes from Shibuya by train, the Futakotamagawa Excel Hotel Tokyo is a new oasis in the blossoming Futakotamagawa district. Enjoy captivating views of landscapes surrounding Mt. Fuji and the Tama River.

Check-In 14:00
Check-Out 11:00

Large Bath, Vending Room

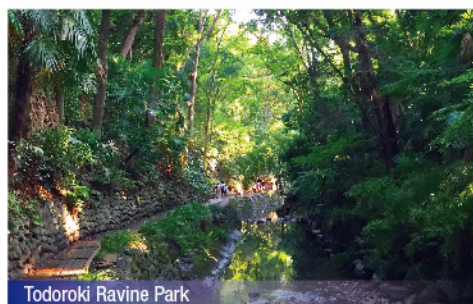
211 Parking Spaces (Charges Apply)

USP

- A Beautiful Townscape
- Restaurants overlooking the Tama River
- 11 Minutes away from Shibuya Area

Surrounding Attractions

- Todoroki Ravine Park
- Gotoh Museum
- Futako-Tamagawa Rise



Todoroki Ravine Park



Gotoh Museum



Futako-Tamagawa Rise

ACCESS

1

FUTAKOTAMAGAWA
STATION



By Foot

5
mins

FUTAKOTAMAGAWA
EXCEL HOTEL
TOKYU



2

BY AIR



Haneda
Airport



Airport Bus

70-90
mins

Narita
Airport

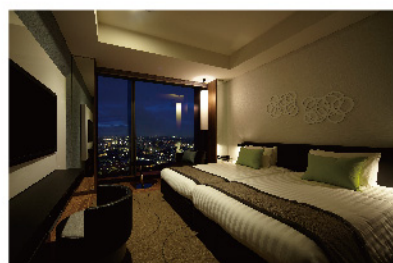
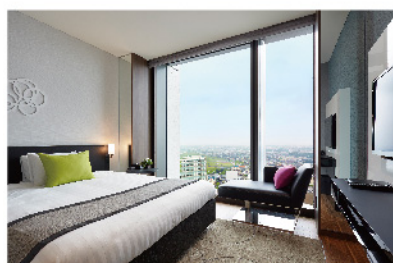


Airport Bus

120-160
mins

FUTAKOTAMAGAWA
EXCEL HOTEL
TOKYU





GUEST ROOMS INFORMATION

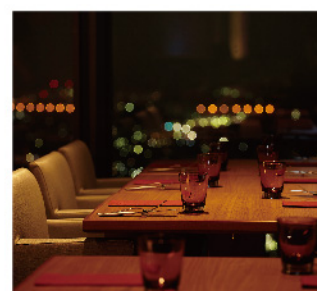
TYPE	NO. OF ROOMS	SIZE (m ² /ft ²)	BED SIZE (cm)
Twin	45	23 / 248	90~
Double	59	16~ / 172~	140~
Suite	1	58 / 624	90~
Japanese Style	1	38 / 409	-

*All Guest Rooms are equipped with Wi-Fi and LAN Access Internet Connection

BANQUET HALLS & MEETING ROOMS

NAME	AREA (m ² /ft ²)	HEIGHT (m/ft)	CAPACITY				
			BANQUET	RECEPTION	CLASSROOM	THEATRE	SQUARE
Tamagawa (Divisible)	360 / 3875	3.3 / 10.8	150	200	180	200	-
Terrace Room	43 / 463	3.3 / 10.8	20	25	-	-	-
Panorama Room	25 / 269	3.3 / 10.8	6	-	-	-	-
Private Terrace	45 / 484	3.3 / 10.8	-	30	-	-	-

*All Banquet Halls are equipped with Wi-Fi and LAN Access Internet Connection



RESTAURANTS

Western Casual Restaurant, THE 30TH RESTAURANT

Bar, THE 30TH DINING BAR

*Room Service Not Available

Amadeus	Apollo/Galileo	Sabre	Worldspan
TYOFTH	D9692	315513	TYOFT

For more information, please visit us at https://www.tokyuhotelsjapan.com/en/hotel/TE/TE_FUTAK/index.html

SHIBUYA TOKYU REI HOTEL

1-24-10, Shibuya, Shibuya-ku, Tokyo 150-0002, Japan
TEL: (81) 3-3498-0109 / FAX: (81) 3-3498-0189



Located in front of Shibuya Station, Shibuya Tokyu REI offers great access to the fashionable districts of Harajuku, Omotesando, and Aoyama. Simple, understated guestrooms are elegant and come with full Internet access.

Check-In 15:00
Check-Out 10:00

770 Parking Spaces (Charges Apply)

Restaurants, Banquet Halls, Vending Machines

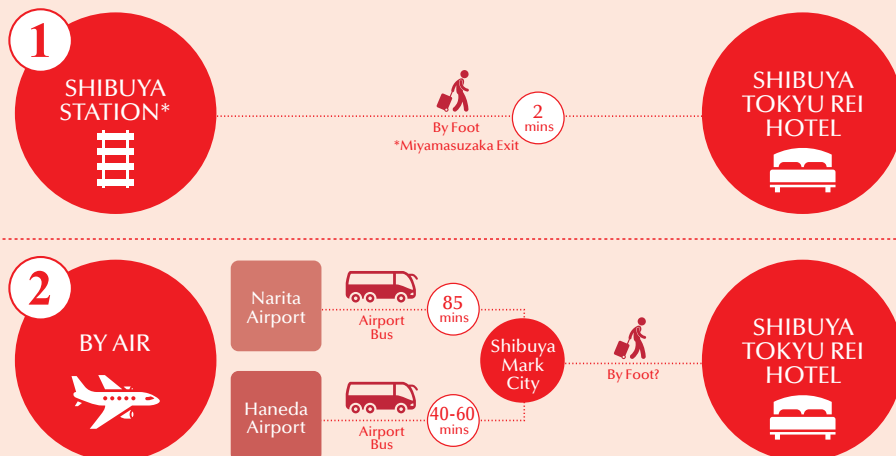
USP

- Excellent Location
- A city that never sleeps
- Center for youth fashion and culture

Surrounding Attractions

- Shibuya 109, Shibuya Hikarie
- Hachiko
- Scramble Crossing

ACCESS



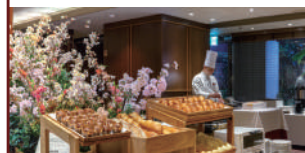
GUEST ROOMS INFORMATION

TYPE	NO. OF ROOMS	SIZE (m ² /ft ²)	BED SIZE (cm)
SINGLE	100	13.5~ / 132.3~	From 140x195
TWIN	89	16.2~ / 163.6~	From 100x195
DOUBLE	36	13.8 / 150.7~	160x195

*All Guest Rooms are equipped with Wi-Fi and LAN Access Internet Connection

RESTAURANTS

Western Casual, HUSH HUSH



*Room Service Not Available

BANQUET HALLS & MEETING ROOMS

NAME	AREA (m ² /ft ²)	HEIGHT (m/ft)	CAPACITY				
			BANQUET	RECEPTION	CLASSROOM	THEATRE	SQUARE
Shirasagi (Divisible)	113 / 1216	3.1 / 10.1	60	100	60	90	40
Chidori	26 / 279	2.4 / 7.8	12	-	-	-	10

*All Banquet Halls are equipped with Wi-Fi Internet Connection

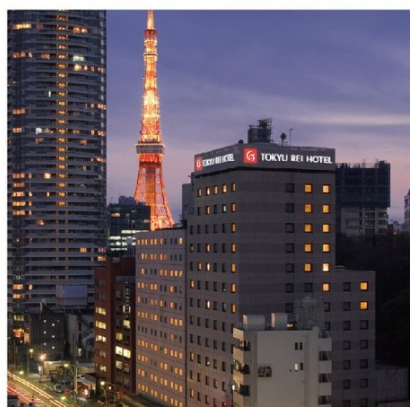
Amadeus	Apollo/Galileo	Sabre	Worldspan
NRT712	75309	48410	44712

For more information, please visit us at <https://www.tokyuhotelsjapan.com/global/shibuya-r/>



TOKYO TORANOMON TOKYU REI HOTEL

1-6-6, Atago, Minato-ku, Tokyo 105-0002, Japan
TEL: (81) 3-3431-0109 / FAX: (81) 3-3431-0434



Tokyo Toranomon Tokyu REI Hotel - previously known as Shinbashi Atagoyama Tokyu REI Hotel has begun a new path as the Toranomon area is being redeveloped as a base for Japan's global business center. Our hotel concept is to offer the ultimate relaxation for guests. Some rooms have a view of Tokyo Tower. Ginza, Roppongi, and Akasaka districts are also close, and hot spots like Asakusa and Odaiba are easily accessible.



Check-In 15:00
Check-Out 10:00



Restaurants, Banquet Halls,
Vending Machines, Washing Machine

USP

• Location • History • Food

Surrounding Attractions

• Toranomon Hills • Tokyo Tower • Atago Shrine
• Ginza, Roppongi

ACCESS

1

BY TRAIN



Toranomon Hills Station
(Hibiya Line)

Toranomon Station
(Ginza Line)

Kamiyacho Station
(Hibiya Line)

Onarimon Station
(Mita Line)



By Foot

4 mins



By Foot

7 mins

TOKYO
TORANOMON
TOKYU
REI HOTEL



2

HANEDA
AIRPORT



Limousine
Bus

35 mins

Toranomon
Hills
(Andaz Tokyo)



By Foot

3 mins

TOKYO
TORANOMON
TOKYU
REI HOTEL



GUEST ROOMS INFORMATION

TYPE	NO. OF ROOMS	SIZE (m ² /ft ²)	BED SIZE (cm)
SINGLE	201	12.3~ / 132.3~	120x195
TWIN	128	15.2~ / 163.6~	From 110x195
DOUBLE	100	14~ / 150.7~	From 140x195
TRIPLE	2	27.4 / 294.9	From 110x195

*All Guest Rooms are equipped with Wi-Fi and LAN Access Internet Connection

RESTAURANTS

Western Casual, SHANGRI-LA



*Room Service Not Available

BANQUET HALLS & MEETING ROOMS

NAME	AREA (m ² /ft ²)	HEIGHT (m/ft)	CAPACITY				
			BANQUET	RECEPTION	CLASSROOM	THEATRE	SQUARE
Atago	72 / 775	2.6 / 8.5	40	60	36	72	32

*All Banquet Halls are equipped with Wi-Fi Internet Connection

Amadeus	Apollo/Galileo	Sabre	Worldspan
TYOSAT	678	9567	44128

For more information, please visit us at <https://www.tokyuhotelsjapan.com/global/toranomon-r/>

TOKYU HOTELS

KICHIJOJI TOKYU REI HOTEL

1-6-3, Kichijoji-minamicho, Musashino-shi, Tokyo 180-0003, Japan
TEL: (81) 422-47-0109 / FAX: (81) 422-43-1811



Kichijoji is the center of nature-rich Musashino district. Kichijoji Tokyu REI is conveniently located just in front of Kichijoji station. North of the station are department stores, restaurants and shops; south is Inokashira Park, famed for cherry trees. The Ghibli Museum in Mitaka, offering a glorious time to film and anime aficionados, is only a 15-minute walk from the hotel.

Check-In 15:00
Check-Out 10:00

43 Parking Spaces (Charges Apply)

Restaurants, Banquet Halls, Vending Machines

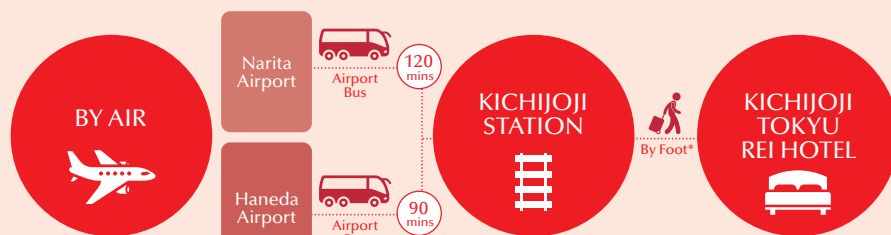
USP

- Location – right in front of Station
- Accessible to Shibuya City
- One stop shopping area

Surrounding Attractions

- Inokashira Park
- Harmonica Alley
- Ghibli Museum

ACCESS



* In front of Koen Exit or South Exit

GUEST ROOMS INFORMATION

TYPE	NO. OF ROOMS	SIZE (m ² /ft ²)	BED SIZE (cm)
SINGLE	132	14.6~ / 163.6~	From 120x195
TWIN	70	18.4~ / 198~	From 110x195
DOUBLE	32	17.3 / 216.4~	From 160x195

*All Guest Rooms are equipped with Wi-Fi and LAN Access Internet Connection

RESTAURANTS

Western Casual,
INOKASHIRA KISSHO DINING



*Room Service Not Available

BANQUET HALLS & MEETING ROOMS

NAME	AREA (m ² /ft ²)	HEIGHT (m/ft)	CAPACITY				
			BANQUET	RECEPTION	CLASSROOM	THEATRE	SQUARE
Musashino (Divisible)	330 / 3552	3.5 / 11.5	200	300	225	360	80
Conifer (Divisible)	224 / 2411	3 / 9.8	90	120	117	150	72

*All Banquet Halls are equipped with Wi-Fi Internet Connection

Amadeus	Apollo/Galileo	Sabre	Worldspan
TYOKTH	D9691	315510	TYOKT

For more information, please visit us at <https://www.tokyuhotelsjapan.com/global/kichijoji-r/>

YOKOHAMA TOKYU REI HOTEL

4-3-6, Minatomirai, Nishi-ku, Yokohama, Kanagawa 220-0012, Japan
TEL: (81) 45-663-0109 / FAX: (81) 45-663-7887



Step within and experience the wonder and mystery of a world where relaxation and stimulation coexist in a harmonious space. Teleport yourself to come and go into this unique life zone where enhanced connections bring rich sensitivity to human communication that generates joyous discovery of what's possible. Come to Yokohama Minato Mirai and feel how special is this place that nurtures your dreams today and expands them into the future.

ACCESS

1 BY TRAIN

Shin-takashima Station



2 mins

Minatomirai Station



10 mins

Yokohama Station



10 mins

Takashimacho Station

YOKOHAMA
TOKYU REI
HOTEL



2 BY AIR

Narita Airport



80 mins

Haneda Airport



30 mins

YOKOHAMA
TOKYU REI
HOTEL



GUEST ROOMS INFORMATION

TYPE	NO. OF ROOMS	SIZE (m ² /ft ²)	BED SIZE (cm)
DOUBLE	54	19.2~ / 206.7	160x195
TWIN	178	21.4~ / 230.3	110x195
ACCESSIBLE ROOM	2	34.1 / 367.0	110x195

*All Guest Rooms are equipped with Wi-Fi and LAN Access Internet Connection

RESTAURANTS

Encore, Bistro China



*Room Service Not Available

Check-In 15:00
Check-Out 10:00

64 Parking Spaces (Charges Apply)

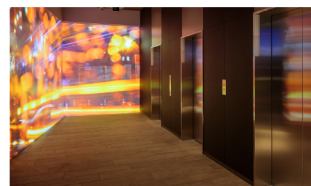
Co-working Space

USP

• Location • Shopping • Sightseeing

Surrounding Attractions

• Yokohama Bay Bridge • Yokohama Minato Mirai 21
• Yokohama Red Brick Warehouses



Amadeus

YOKYTH

Apollo/Galileo

F6732

Sabre

349165

Worldspan

YOKYT

For more information, please visit us at <https://www.tokyuhotelsjapan.com/global/yokohama-r/>



KAWASAKI KING SKYFRONT TOKYU REI HOTEL

3-25-11, Tonomachi, Kawasaki-ku, Kawasaki-shi, Kanagawa 210-0821, Japan
TEL: (81) 44-280-1090 / FAX: (81) 44-266-1093



Kawasaki King Skyfront Tokyu Rei Hotel is a "Lifestyle hotel" with the concept of WAREHOUSE, is situated in Kawasaki City's King Skyfront high tech zone and is easily accessible from Haneda Airport. It will be the first hotel in the world to use hydrogen fuel made from recycled plastic collected in the local Kawasaki area. The Hydrogen will then be sent to the hotel via a pipeline and will provide 30% of the hotel's heat and electric usage.

- Check-In 15:00
Check-Out 10:00
- 30 Parking Spaces (Charges Apply)
- Laundry Corner, Vending Machine, Public Bath, Exercise Room, Business Lounge and Café, Lifestyle Store, Smoking Booth

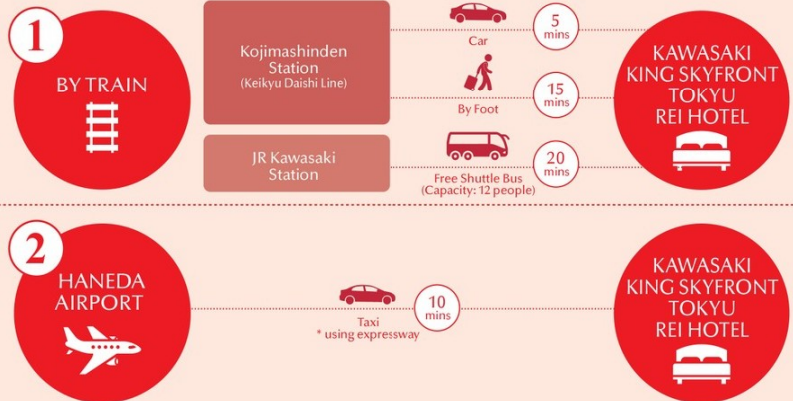
USP

- Great Accessibility from Haneda Airport
- A science and technology innovation hub
- First hotel in the world to use hydrogen fuel made from recycled plastic collected in the local Kawasaki area
- Lifestyle hotel with the concept WAREHOUSE

Surrounding Attractions

- Kawasaki Daishi Heiken-ji Temple
- Lazona Kawasaki Plaza
- Toshiba Science Museum • Kawasaki Racecourse

ACCESS



GUEST ROOMS INFORMATION

TYPE	NO. OF ROOMS	SIZE (m ² /ft ²)	BED SIZE (cm)
DOUBLE	156	19 / 205	From 140 x 195
TWIN	30	24.3~ / 262~	110x 195

*All Guest Rooms are equipped with Wi-Fi and LAN Access Internet Connection

RESTAURANTS

Captain's Grill and Bar



*Room Service Not Available

BANQUET HALLS & MEETING ROOMS

NAME	AREA (m ² /ft ²)	HEIGHT (m/ft)	CAPACITY
Conference Room A	25 / 269	3.1 / 10.1	12
Conference Room B	16 / 172	3.1 / 10.1	6
Conference Room C	11 / 118	3.1 / 10.1	4

*All Banquet Halls are equipped with Wi-Fi Internet Connection *Available only from 9:00-21:00 *No Food and Drink served

Amadeus	Apollo/Galileo	Sabre	Worldspan
TYOKKH	E6686	321414	HNDKK

For more information, please visit us at <https://www.tokyuhotelsjapan.com/global/kawasaki-r/>