

Download from



Apple® and the Apple logo® are trademarks of Apple Inc., registered in the U.S. and other countries.
Google Play and the Google Play logo are trademarks of Google LLC.

E-Expressway-radio

Road traffic information is also available on the Japan Road Traffic Information Center (JARTIC) website via the "information service for events" page.

<http://b-event.jartic.or.jp/MultilingualInformationView/>

Operation of smart devices and the like while driving is prohibited by the Road Traffic Act.
This app should be used by a passenger.

Expressway and SA/PA information

Information on expressway: en.driveplaza.com/

DoRaPuRa SEARCH



NEXCO EAST Official Website
<https://www.e-nexco.co.jp/en/>



Support is available 24 hours a day 365 days a year in multiple languages, including English, Chinese, and Korean.

NEXCO EAST Customer Center

0570-024-024

Alternately 03-5308-2424

Let's drive **safely** and **comfortably** with

Next Gen Highway Radio
E-Expressway-radio

The next gen expressway radio app!

Get the **latest expressway traffic information in real time** with **this Smartphone app!**



Traffic lanes are restricted ahead at the xx KM post marker due to road works...

An accident has occurred approximately 1 km ahead. Precautions are advised.

Supports voice operation

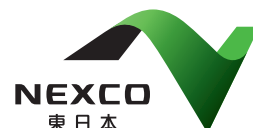
Including Japanese
6 languages supported



for iPhone & Android

Free
Smartphone app

あなたに、ベスト・ウェイ。

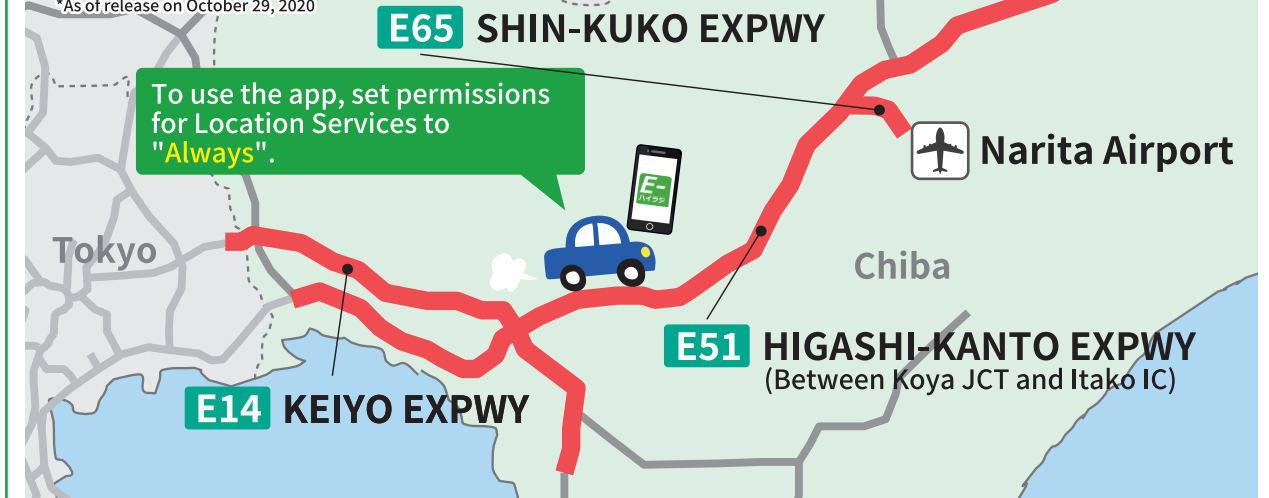


E-Expressway-radio Features

Travel information for your route is provided using your smart device's GPS.
Information can be received anywhere while traveling along a major route!

Useable along **3 routes**:
KEIYO EXPWY, SHIN-KUKO EXPWY, and HIGASHI-KANTO EXPWY (between Koya JCT and Itako IC)

*As of release on October 29, 2020



To use the app, set permissions for Location Services to "Always".

<Road Traffic Information> Supports your selection of routes and driving plans!

By making a request with this app, you can get information for your route, such as lane closures and traffic jams.

① A passenger requests information

② Road traffic information is sent based on the request

Traffic lanes are restricted ahead at the xx KM post marker due to road works...

In addition to touch controls, **voice operation** is also possible.

Restrictions (Lane closures, traffic jams, lane restrictions) Weather information (rain, wind) And more

<Emergency Information> Supports your safe driving!

Alerts are automatically sent to your device using Push Notifications, to provide up to date information on accidents and obstructions, etc., along your route.

① An accident occurs ahead

② An emergency alert is automatically sent by Push Notification

An accident has occurred approximately 1 km ahead. Precautions are advised.

Emergency alerts for the route ahead are sent by **Push Notification**.

Accidents, obstructions, vehicles traveling in the wrong direction And more

Multilanguage support

Information is available in 6 languages, including Japanese.
(Japanese, English, Chinese (simplified & traditional), Korean, Thai)

The language in which information is provided is automatically selected based on the system language of your smart device.
(Defaults to English for unsupported languages.)

How to use E-Expressway-radio

Road traffic information and emergency information are provided in different ways. You can get road traffic information by using the on-screen touch controls or with voice activated operations. Voice control can also be used.



Road traffic information

Information for your route, such as road closures and traffic jams, can be requested and played back.

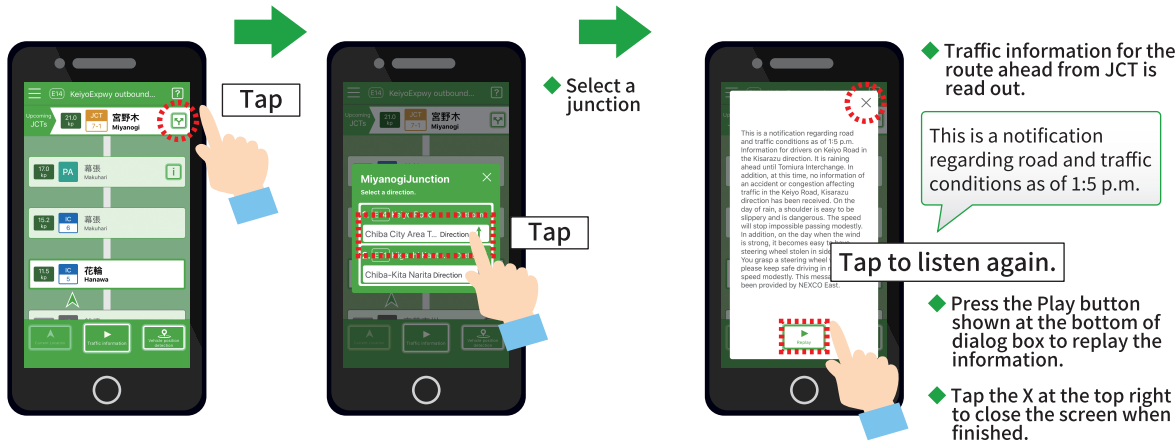


Voice control



Traffic information for the route ahead from JCT

To get traffic information for the route ahead from JCT, first select the JCT junction.



Voice control



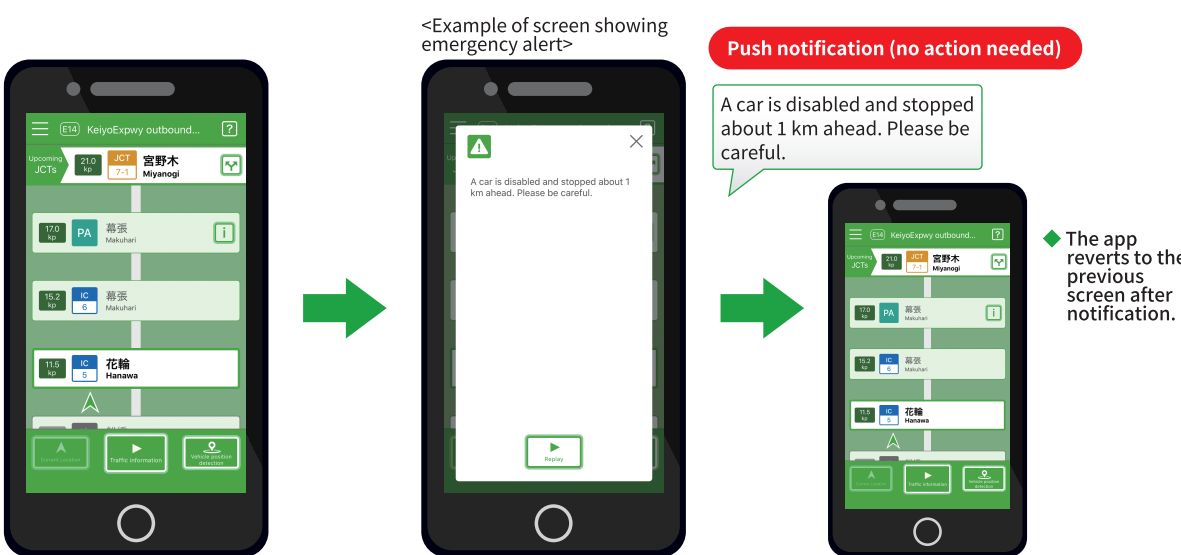
* Both "Road traffic information" and "Road traffic information from JCT" can be obtained using voice controls in English, Chinese (simplified and traditional), Korean, and Thai.

Operation of smart devices and the like while driving is prohibited by the Road Traffic Act. This app should be used by a passenger.



Emergency Information

Alerts are automatically sent using Push Notifications to give you information on accidents and obstructions, etc., along your route.



Information available in multiple languages

Information is provided in 6 languages, including Japanese. (Japanese, English, Chinese (simplified & traditional), Korean, Thai) The language in which information is provided is automatically selected based on the system language of your smart device. (Defaults to English for unsupported languages.)

