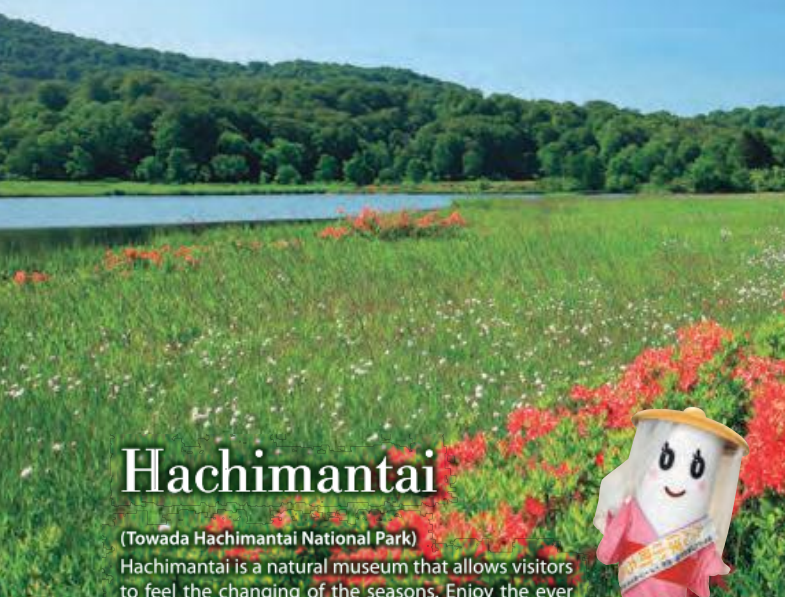


Welcome to Kazuno



Hachimantai

(Towada Hachimantai National Park)

Hachimantai is a natural museum that allows visitors to feel the changing of the seasons. Enjoy the ever changing landscape through the volcanic activity, alpine plants, marshlands and hot springs.



Transportation

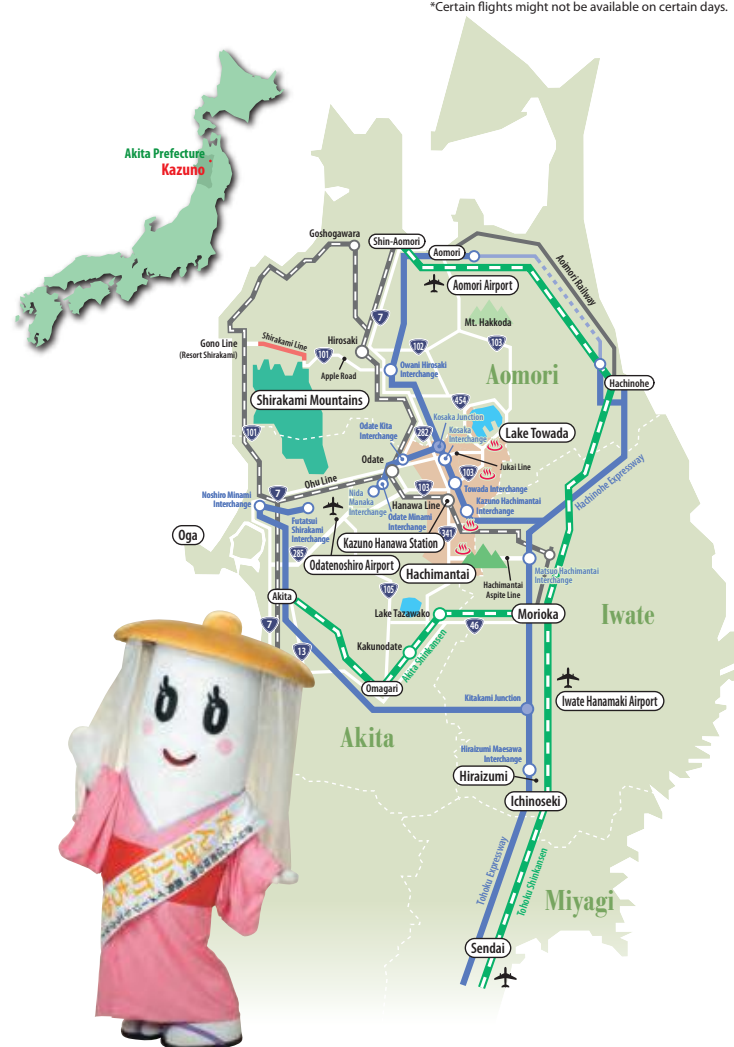
By train

Tokyo	Akita	Aomori	Morioka	Sendai	Ikebukuro
Tohoku Shinkansen 2 hrs 11 mins	Ohu Line 1 hrs 33 mins	Ohu Line 1 hrs 10 mins	Asanaro 1 hrs 31 mins	Michinoku 1 hrs 20 mins	Night bus "Jupiter" 8 hrs 30 mins
Morioka 2 hrs	Odate 1 hrs	Kosaka 1 hrs 13 mins	Hanawa 56 mins	Hanawa 56 mins	Noshiro 2 hrs 15 mins
Kazuno Hanawa			Aomori	Odate	Noshiro

By air

Tokyo	Sapporo	Tokyo	Nagoya (Centrair)	Osaka	Seoul	Sapporo	Osaka (Itami)
ANA 65 mins	JAL/ANA 50 mins	JAL 75 mins	JAL 80 mins	JAL 90 mins	KAL 140 mins	ANA 55 mins	JAL 90 mins
Odate Noshiro	Aomori				Iwate Hanamaki		
By car 60 mins	Kazuno				By car 80 mins		

*Certain flights might not be available on certain days.



Contact

Kazuno City Hall (Head of Tourism)

4-1 Arata Hanawa, Kazuno, Akita 018-5292 Japan
Phone: 0186-30-0248 Fax: 0186-30-1515
URL <http://www.city.kazuno.akita.jp>
E-mail kankou@city.kazuno.lg.jp

Kazuno Kanko Bussan Kosha

11-4 Shindenmachi Hanawa, Kazuno, Akita 018-5201 Japan
Phone: 0186-22-0555 Fax: 0186-22-0222
URL <http://www.ink.or.jp/~antler/index.php>
E-mail antler@ink.or.jp

AKITA KAZUNO

Towada Hachimantai National Park

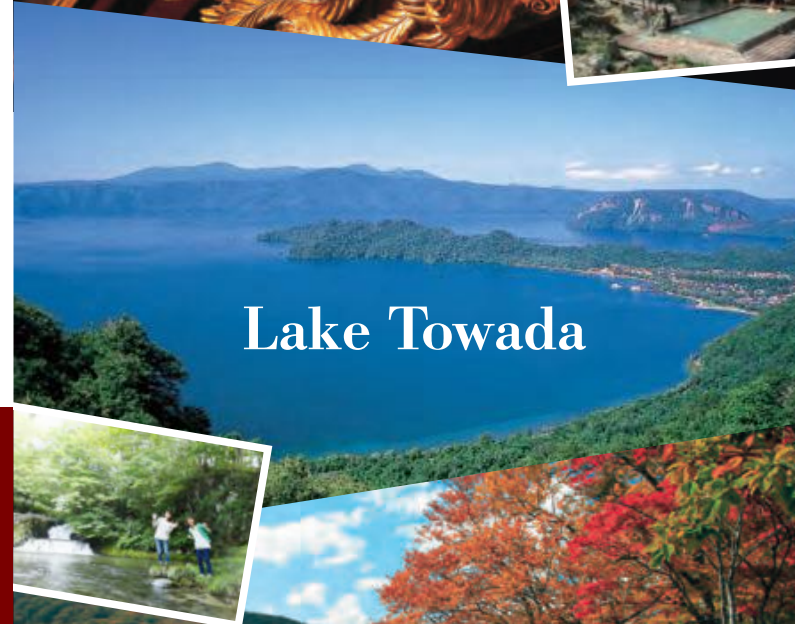
Towada Hachimantai National Park

KAZUNO



Tanpo Komachi

Hanawa Bayashi

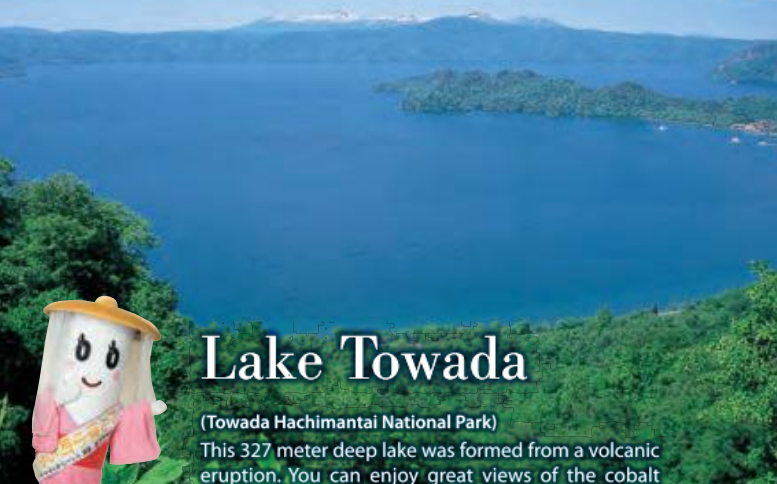


Lake Towada



Hachimantai

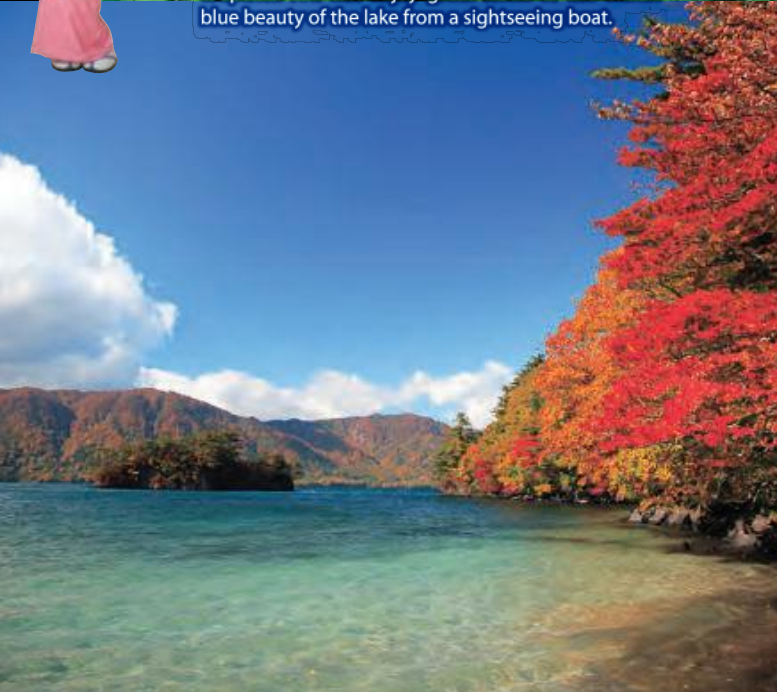
Village of healing forest and water

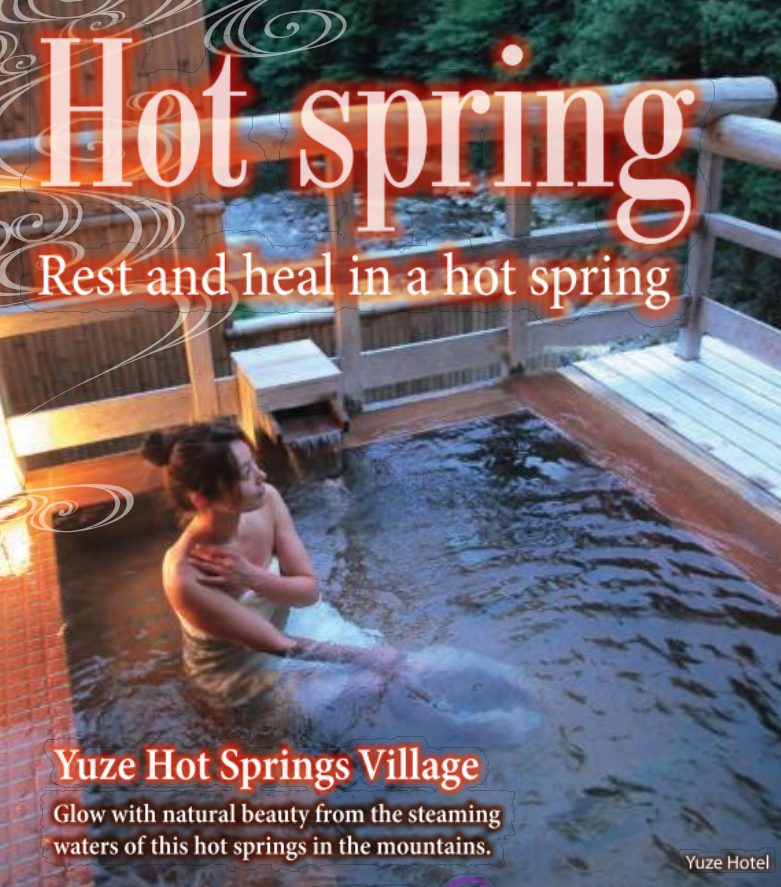


Lake Towada

(Towada Hachimantai National Park)

This 327 meter deep lake was formed from a volcanic eruption. You can enjoy great views of the cobalt blue beauty of the lake from a sightseeing boat.





Hot spring

Rest and heal in a hot spring

Yuze Hot Springs Village

Glow with natural beauty from the steaming waters of this hot springs in the mountains.

Yuze Hotel



Oyu Hot Springs Village

This famous hot spring is the oldest in Kazuno, founded 800 years ago.

Fukenoyu Hot Spring



Ryokan Ryumonteji-Chiba



History

Tracing the course of history



Oyu Stone Circle (National exclusive historic site)

This is a large-scale late Jomon period ruins featuring two rings of stone, Nonakado and Manza.



Old Sekizen Liquor Store

This three-layer interlocking wooden building with a lofted ceiling built in 1905 is a nationally registered tangible cultural property.

Oyu Stone Circle Hall

This is an exhibition facility dedicated to the mystery of the stone circles. In addition to exhibits of Jomon Period pottery, there is an experiential learning facility that allows visitors to try recreating pottery and earthenware.



Historic Osarizawa Mine

Osarizawa Mine boasts 1300 years of history. Now, visitors can see, learn, and experience this site. Visitors can see 9 million year old crustal faults and reproductions of miners from the Keicho period. (Modernization industrial heritage)

Experience panning for gold dust

At the Historic Osarizawa Mine, visitors can pan for gold dust and then attach the gold dust they find to a card and bring it home.



Kiritanpo-making experience



"Antler" Roadside Station

This facility features many interactive areas letting you experience Kazuno fully. This includes the "Festival Exhibition Hall" displays Hanawabayashi carts and the "Tezukuri Experience Hall" where visitors can make their own kiritanpo. There are also plenty of souvenirs for sale.



Winter

The great expanse of Aomori fir trees spanning from Gentamori to the peak of Hachimantai is said to be one of the "three great forests of Japan."

Enjoy the winter here! A winter wonderland of outdoor activities



Snow shoe trekking

Put on western-style snow shoes and take a walk around Hachimantai in the winter.



Akita Hachimantai Ski Area

This ski resort is on the Hachimantai Aspite Line at an altitude of 1000 meters.



Hanawa Ski Resort

An excellent array of facilities including a jump platform and a cross country course that can be used during the summer as well.



Suishozan Ski Resort

These ski resort has many runs perfect for beginners and those with intermediate skill, an idea place for families.

Festivals

History and traditions that are passed on down



Hanawa Bayashi

The Hanawa Bayashi has been designated as a national important intangible folk cultural asset, and is said to be the best Festival music in Japan. Competing musical accompaniments on 10 gorgeous festival carts walk through town.



Dainichido-Bugaku

(UNESCO Intangible Cultural Heritage)

This traditional performance art has roughly a 1300 year history. Performers wearing golden masks dance the "Godaisonnmai" and other Bugaku. In this performance of a nationally designated intangible folk cultural asset.



Kemanai Bon Odori

(UNESCO Intangible Cultural Heritage)

This Bon Odori is a nationally designated important intangible folk cultural asset. In this exciting dance, participants with their heads wrapped in towels dance in circles around fires set up on the road.

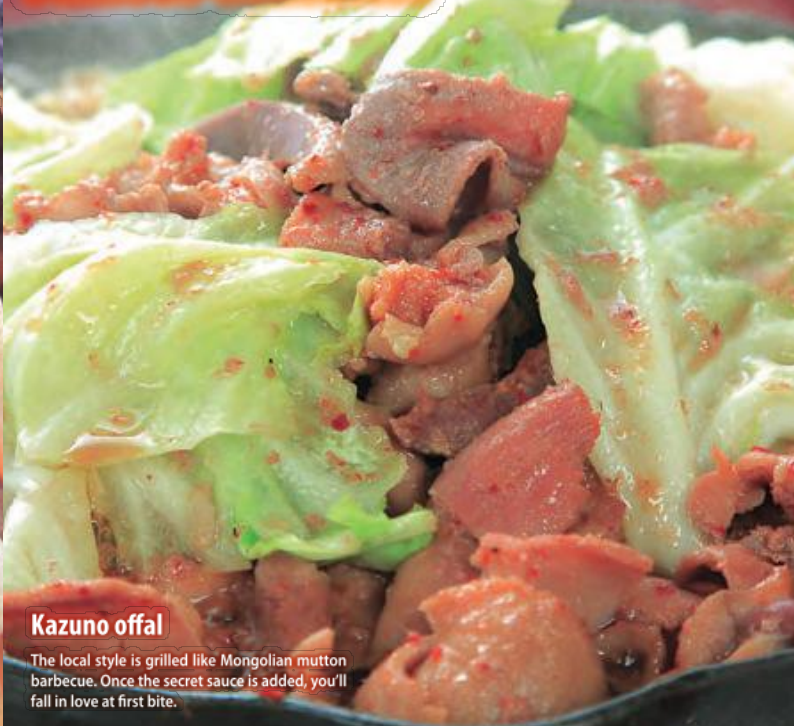


Kazuno is the birthplace of Akita's famous kiritanpo.

Kiritanpo

Kazuno is the birthplace of Akita's famous kiritanpo. "Kiritanpo nabe" is a local dish with chicken and vegetables boiled together. If you're hungry, we recommend "Misozuke tanpo" with sweet miso roasted over coals.

Famous delicacies



Kazuno offal

The local style is grilled like Mongolian mutton barbecue. Once the secret sauce is added, you'll fall in love at first bite.



Hachimantai Pork

These brand name pigs are raised in an ideal natural environment, given carefully selected feed, and under careful health supervision.



Kazuno Beef

Raising these cows on an organic diet has made this meat both healthy and extremely delicious.



Kazuno Peaches of the Far North

These peaches are harvested later than others, and are on the market in mid-September. In order to maintain a consistent quality, each one is treated with care.



Kazuno Apples

The extreme difference between the warm and cold seasons in Kazuno give the apples a high sugar content, and fill your mouth with their sweet juices when you bite into them.