



## A road section like a magnificent park

Driving from Jozankei to Nakayama Pass, enjoy beautiful mountain landscapes. Muine Bridge, which curves gently as it spans a ravine, looks like an elevated garden. The road was designed to give the impression of a park. It's the best road section on the Sapporo Scenic Byway and has been named a Scenic Road\* of the Scenic Byways in Hokkaido.



This signboard indicates the course

\*\*"Scenic Roads" are the most impressive sections of Scenic Byways in Hokkaido. They're selected by the Scenic Byway Hokkaido Promotion Council at the recommendation of the local activity group for each byway. As of October 2022, 12 road sections have had the honor of being so selected.

The National Highway 230 Map is also available on your smartphone

The National Highway 230 Map is available by **Google My Map** on your smartphone. Use Google My Map to easily access target facilities.

Google My Map



Recommended scenic overlook!

The Sapporo Scenic Byway organization strongly recommends that you stop for a break at the KP40 lay-by. It's among the most scenic sections of the byway. This parking area commands magnificent views of Mt. Soranuma and Mt. Sapporo.



"Scenic Road" section



Michi-no-Eki (Rodeside Rest Areas)



Restroom



Parking



Scenic Café



Scenic Deck



Scenic Byway Information Center



Orchard & farm area



Scenic Byway Information Center



Orchard & farm area



Scenic Byway Information Center



Orchard & farm area



Scenic Byway Information Center



Orchard & farm area



Scenic Byway Information Center



Orchard & farm area



Scenic Byway Information Center



Orchard & farm area



Scenic Byway Information Center



Orchard & farm area



Scenic Byway Information Center

Publisher

Sapporo Development and Construction Department, Hokkaido Regional Development Bureau <https://www.hkd.mlit.go.jp/sp/>

This leaflet was created based on comments made at the Conference on Collaborative Road Management for National Highway 230. \*April, 2024

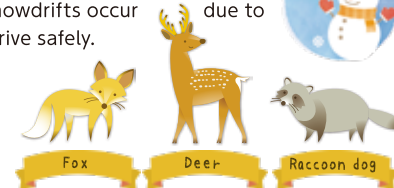
## Cautions for driving safely

### Weather conditions

National Route 230 has many slopes and curves, and in winter the road surface freezes and snowdrifts occur due to snowstorms. Slow down and drive safely.

### Wildlife

Wildlife may be present on or near the roads, please be alert and drive with caution.



## Toyotaki Snow Removal Station

Check road and area information here!



↑ Notice board inside the Toyotaki Snow Removal Station

### Know about the Toyotaki Snow Removal Station!

- 01 Snow removal and other road safety services are provided around the clock.
- 02 Restrooms and vending machines are available 24 hours a day.
- 03 The station is designated as an emergency evacuation center by the City of Sapporo.

Use an app to get information on disaster prevention!

### Scenery preservation activities along the Itawarizawa Section of Rt.230

SONAE, the city of Sapporo's disaster-prevention app



iPhone



Android



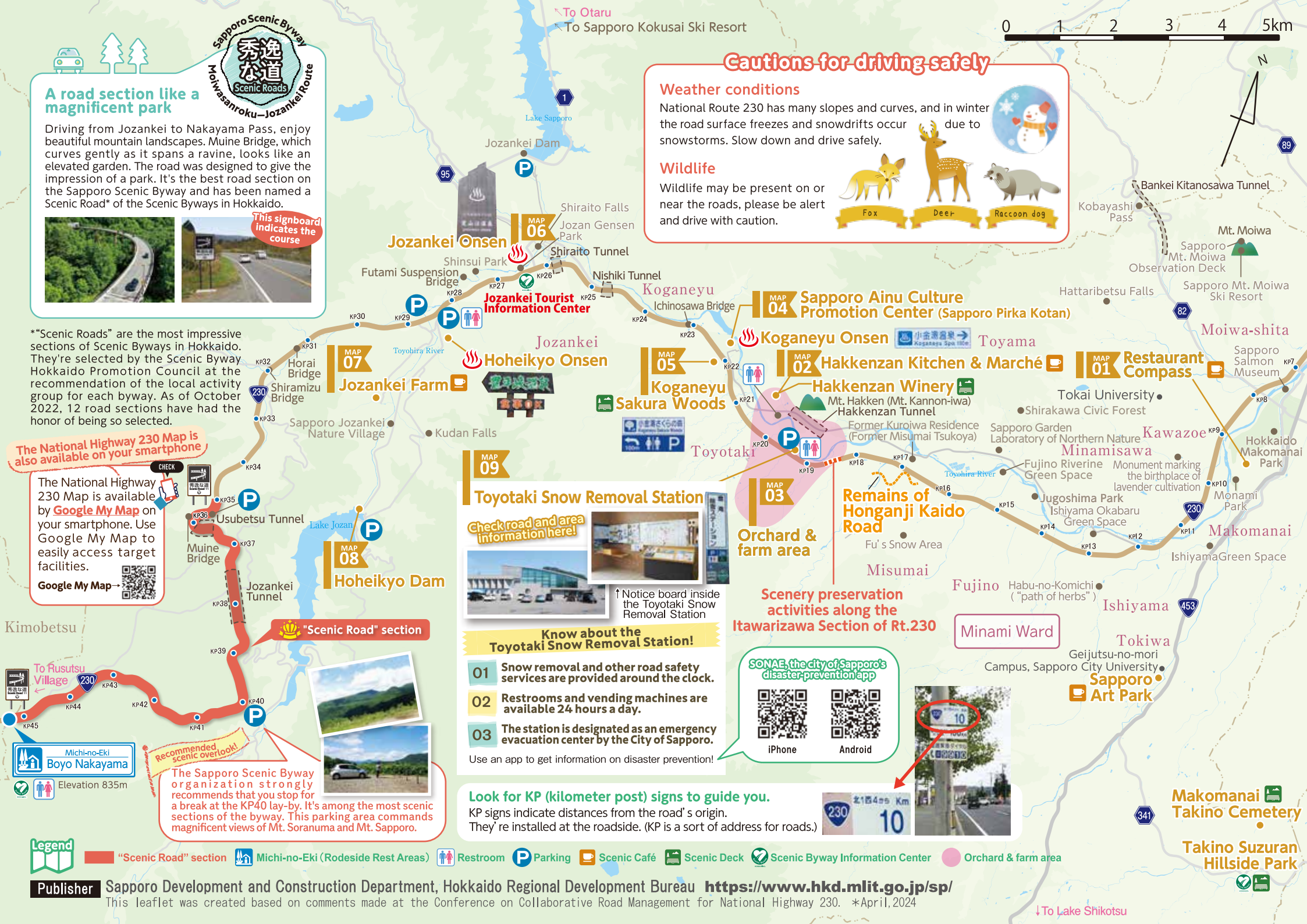
### Look for KP (kilometer post) signs to guide you.

KP signs indicate distances from the road's origin. They're installed at the roadside. (KP is a sort of address for roads.)



0 1 2 3 4 5km

N







## Moiwasanroku-Jozankei Route, Sapporo Scenic Byway Recommended Information

### The charm of National Highway 230

This national highway passes through Shikotsu-Toya National Park. It features a lush green environment and also runs through downtown Sapporo, through the Jozankei hot spring resort, and over Nakayama Pass, ending at Lake Toya. Mountains over 1,100 m high, including Mt. Sapporo and Mt. Yoichi, which look different in each season, can be seen from the route. Orchards and farms spread from Misumai to Toyotaki, growing strawberries, cherries, blueberries, eggplant, peppers, tomatoes and more. Some orchards are popular among tourists for fruit-picking. In addition, the Jozankei hot spring resort is appreciated as a place to enjoy refreshing summer and autumn colors. Why not drive National Highway 230 to marvel at the charms of the four seasons and the splendor of nature?

Because of the pandemic, the information on this map may not be current. We recommend that you confirm the availability of the listed activities.

Information on scenic decks and scenic cafés is here!



MAP 01



### Restaurant Compass

Scenic Café

This hilltop restaurant commands excellent views. The building was designed by Kurokawa Kisho, one of Japan's most notable architects, as the press center for the 1972 Sapporo Winter Olympic Games, and even today it boasts a unique style. Inside, you can see posters from the Olympic Games and a plate with the five-ring Olympic logo.

[Address] 8-1, Makomanai Kashiwaoka 7-chome, Minami Ward, Sapporo City  
[Contact] 011-584-7555 [Hours] 11:00-14:30  
[Closed] Hours and days of operation may change. Call before visiting the restaurant. [Parking] Available.

MAP 02



### Hakkenzan Kitchen & Marché

Scenic Café

This restaurant next to the winery at the foot of Mt. Hakken reopened in February 2024 after renovations. The concept is set meals of one soup and three dishes. The small dishes, made with local ingredients, and the miso soup, made with lots of ingredients, are very popular. Enjoy your meal while appreciating the beautiful vineyards and Mt. Hakken.

[Address] 150 Tomiyama, Minami-ku, Sapporo City  
[Contact] 011-596-5778 [Hours] 9:00-16:00 (last order: 15:30)  
[Closed] Thursdays from Dec. to Apr.; never from May to Nov.  
[Parking] Available

MAP 03

### A 30- to 40-minute drive from downtown Sapporo Orchards & farms

Minami Ward abounds in orchards and farms! Many of these are working to reduce or eliminate agricultural chemicals. Enjoy fresh seasonal delicacies by stopping at farm stands or picking fruit yourself.

[Contact] 011-596-2059 (Misumai Liaison Center)  
[Hours] Weekdays 9:00-17:00

### The fruit seasons

	June	July	Aug.	Sep.	Oct.	Nov.
Strawberries	●	●				
Cherries		●	●	●		
Blueberries			●	●	●	
Plums				●	●	●
Prune plums				●	●	●
Grapes					●	●
Apples					●	●

Vegetables picked in the morning are displayed at a farm stand.†

MAP 04



### Sapporo Ainu Culture Promotion Center- Sapporo Pirika Kotan

Handle some 300 exhibits in the exhibition rooms. The outdoor kotan (village) includes a dse (house) and other exhibits. At the Ainu cultural experience corner, try your hand at making Ainu goods for free. Regular events include Ainu dances for you to appreciate and Ainu children's games for you to play!

[Address] Koganeyu 27, Minami Ward, Sapporo City [Contact] 011-596-5961 [Hours] 8:45-22:00 (Exhibit room and garden 9:00-17:00) [Admission fee] No fee except for the exhibit room (For the exhibit room, 200 yen per adult, 100 yen per high schooler, free of charge for junior high schoolers or younger) [Closed] Mon., nat'l holiday, last Tue. of every month, year-end and New Year's holidays [Parking] Available

MAP 05



### Koganeyu Sakura Woods Scenic Deck

These woods consist of some 800 planted cherry trees of 11 varieties, including Sargent's cherries. It's the perfect place to spend a relaxing time. Enjoyable events are held, such as a summer festival and an autumn harvest festival.

[Address] Koganeyu 604-2, Minami Ward, Sapporo City  
[Contact] 011-578-3361 (Administrative office of Monami Park)  
[Open] 8:00-17:00 (from Late April to early November)  
[Closed] During winter [Fee] Free of charge [Parking] Available

MAP 06



### Jozankei Onsen hot spring resort

Known as a forest hot spring resort, Jozankei Onsen has more than 150 years of history. The area has been gaining popularity for recreation and "food hopping." People of all generations—young couples, families, others—can stay and enjoy themselves in this area.

Jozankei Tourism Association  
[Address] Jozankei Onsen Higashi 3, Minami Ward, Sapporo City  
[Contact] 011-598-2012  
[Hours] 9:00-17:00  
[Closed] The year-end and New Year's holidays [Parking] Available

Details on restaurants and activities can be obtained here!



MAP 07



### Jozankei Farm

Scenic Café

This farm in the middle of a vast forest is a garden with participatory activities and a theme park for fruit where you can involve your whole body in seeing, eating, playing and enjoying yourself. The Jozankei Burger, specially made with fresh vegetables and seasonal fruit grown on the farm, is a mouthwatering treat.

[Address] 832 Jozankei, Minami-ku, Sapporo City [Contact] 011-598-4050  
[Hours] 9:00-17:00 (April 25-October 31) \*Reservations are required from November to the end of April as it is open in winter. Please contact us directly for details.  
[Closed] Every Wed. (April 25-October 31) \*If Wednesday is a national holiday, the following day. [Parking] Available

MAP 08



### Hoheikyo Dam

On sunny days, water is released so that travelers can see the rainbows that form. This beautiful dam features fresh green leaves in summer and bright fall foliage in autumn. The Dam Curry, served only in the fall foliage Take the electric bus from the dam entrance to the dam.

[Address] 840, Minami Ward, Sapporo City [Contact] 011-598-3452  
[Hours] 8:45-16:00 (The last bus departs the dam at 16:30.)  
[Closed] During winter [Electric bus fare] 700yen for adults, 350yen for children (round trip) [Parking] Available



## Tips for driving in Hokkaido

### Keep left

In Japan, you must always drive on the left side of the road.

### Tips for winter driving

Snow blown up by large vehicles reduces the visibility. When you're overtaken by another vehicle, slow down and turn on your windshield wipers.

### Never fall to stop when a traffic light is red.

When a traffic signal is red, not only cars going straight but also ones turning left must stop.

### Always pay attention to speed limits! Legal speed limit is 60 km/h!

Speed limits on roads without traffic signs are 60 km/h on public roads and 100 km/h on expressways.

### Bring your car to a complete stop at stop signs and in front of train crossings!

In Japan, you must stop your car at stop signs, and it is a traffic violation not to stop completely. Drivers must also stop in front of train crossings.

### Drivers are prohibited from using mobile phones.

Drivers are prohibited from talking on a cellphone and from looking at a cellphone.

### Right-turning cars must wait!

Oncoming cars driving straight and turning left have right of way in principle. Right-turning cars must wait for oncoming vehicles to go through/past before turning.

### Obey arrow traffic lights.

Although a traffic light is red, cars which are turning in the direction of a green arrow traffic signal may make a turn.

### Pay attention to no passing zones!

Do not pass in the no passing zones. Unbroken yellow center lines indicate no passing zones.

### Never drink and drive!

Not drinking and driving is obvious but please note that sober passengers who travel with a driver who has been drinking, and who may have encouraged the driver to drink will also be punished.

Experience the human oriented and environment friendly ideas to design roads in Hokkaido, a cold, snowy region.

## Guide to National Highway 230

### ① National Highway 230 Running Through Shikotsu-Toya National Park

Based on the idea that roads should be beautified the same as parks, National Highway 230 is designed to harmonize with the surroundings of the national parks and to be environmentally friendly. Such efforts ensure comfortable driving on Rt. 230.

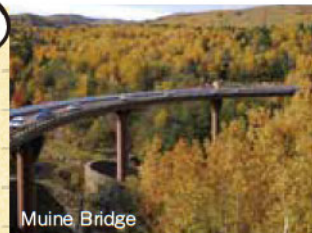
### ② Senkyo Shelter commands the beauty of the valley

At first glance, you may think it is a tunnel. As a matter of fact, it is a type of snow shelter that protects roads from avalanches. There is no pillar on the valley side of the facility to have drivers enjoyed the scenery. Must-see panorama of the beautiful valley!

### ③ Uniquely designed Tsubetsu Tunnel as a result of pursuing functionality

A tunnel shaped like a crocodile with its mouth wide open. This is a form that has finally been reached through many trials and errors to have the snow accumulated on the tunnel roof fall on both sides. Please try to find it while driving.

Knowing Rt. 230 makes driving even more fun!



Muine Bridge



Senkyo Shelter commands



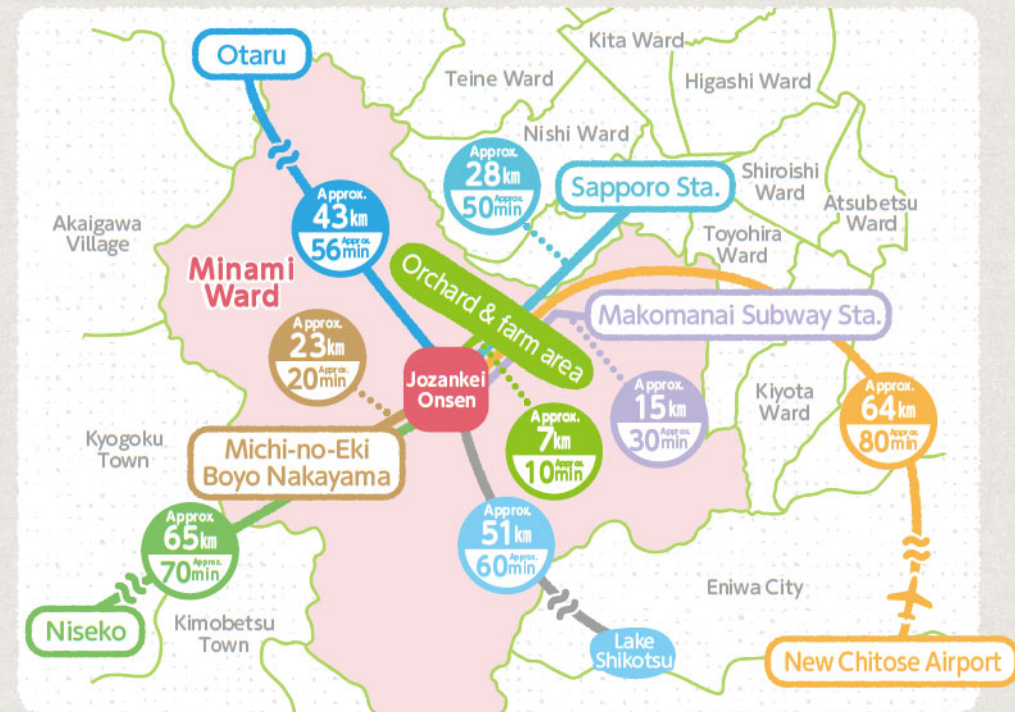
Usubetsu Tunnel

## Scenic preservation on the Itawarizawa Section of Rt.230

On the Itawarizawa Section, trees were planted in commemoration of road widening been working completion. Local people and the road administrators have been working together since 2016 to preserve this beautiful tree-lined scenery.



## Quick-reference chart of travel times and distances to Jozankei Onsen



This chart gives rough distances and driving times to drive to Jozankei Onsen.

### Trivia: National Highway 230

The driving force behind the construction of the Honganji Kaido road was a young hero.

Construction of that road, the predecessor to National Highway 230, began in 1870. The person who is regarded as having propelled the construction was Gennyō Shōnin of the Higanji Honganji Temple in Kyoto. He encouraged followers to immigrate to Ezo on his way to Ezo. He succeeded in collecting huge sums of construction funds for the road. He was then only 19 years old. The construction of the Honganji Kaido took just 15 months. It involved many people, including immigrants from the former Date domain to eastern Hokkaido and Ainu people of the Iburi region. Over 140 years has passed since then. At Nakayama Pass, a statue of Gennyō Shōnin, the driving force behind the Honganji Kaido, stands praying for the safety of passers-by.

Drive safely.



Statue of Gennyō Shōnin at Nakayama Pass†



## What's "Scenic Byway Hokkaido"?

The phrase is a combination of 'scenic' and 'byway'. It refers to efforts made to revitalize communities by highlighting their local characteristics. 17 areas of Hokkaido are promoting this campaign.

## Sapporo Scenic Byway Molwasanroku-Jozankei Route

The Sapporo Scenic Byway is a route that's full of fascination. It passes through an area that's good for living in and visiting. The area along the route is enhanced by community activities, such as roadside flower-planting and ice candle displays. More information is here→

Sapporo Scenic Byway Molwasanroku-Jozankei Route.

