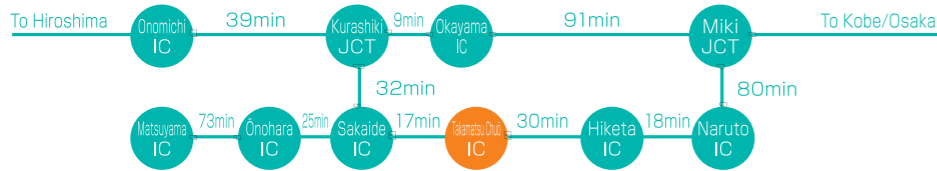


Time Required for Express & Toll Roads



JR-Bullet Train (Shinkansen) Access

Tokyo	Tokaido-Sanyo Bullet Train	3hrs 15m	Seto-Ohashi Line (Rapid Train) 1 hr	Takamatsu
Nagoya	Tokaido-Sanyo Bullet Train	1hr 40m		
Shin Osaka	Tokaido-Sanyo Bullet Train	45m		
Matsue	Hakubi Line	2hrs 30m		
Hakata	Kyushu-Sanyo Bullet Train	1hr 40m		

◆JR Shikoku Telephone Guidance Center 0570-00-4592

Kosoku Bus

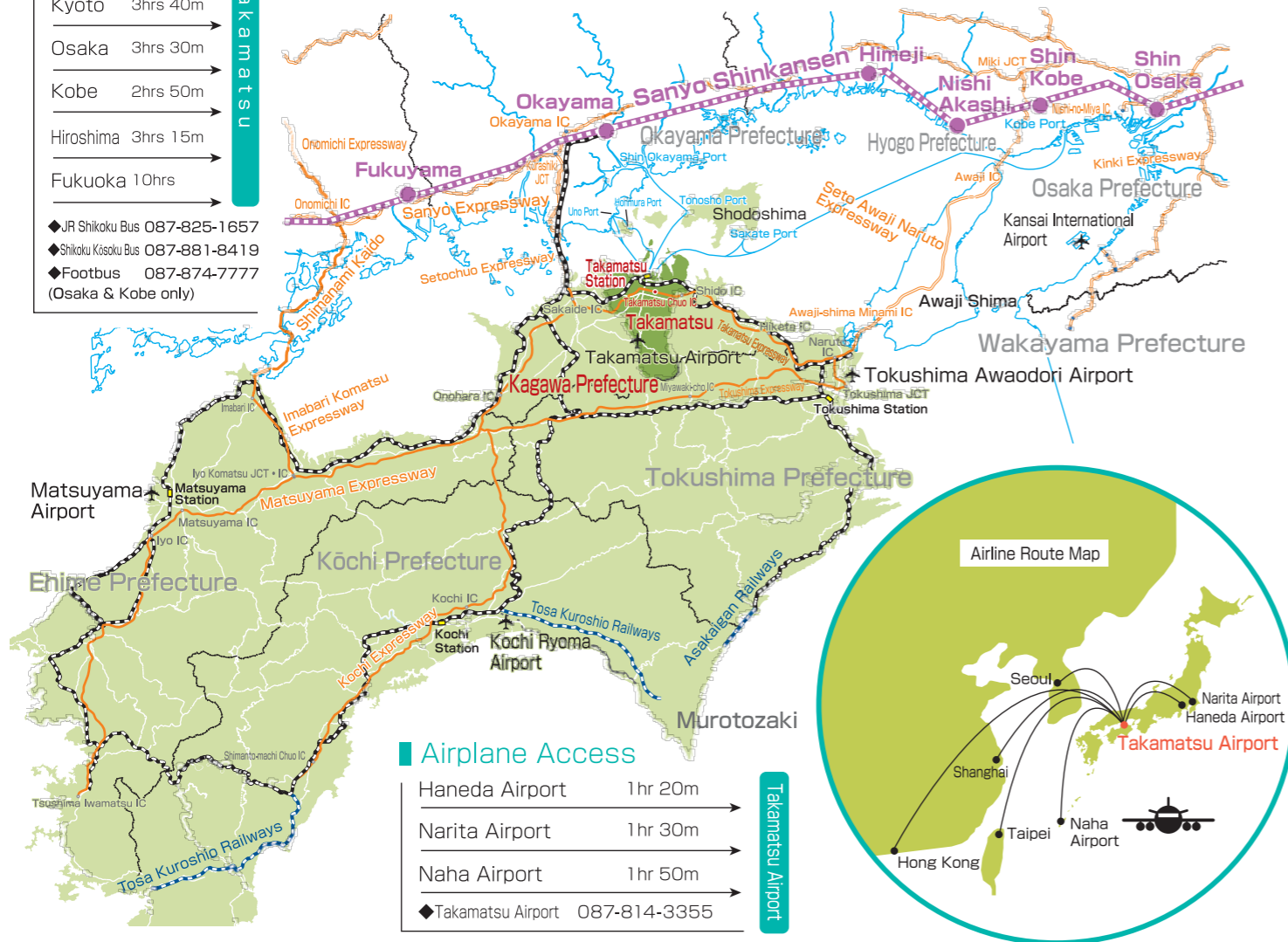
Tokyo	9hrs 45m
Yokohama	9hrs 30m
Nagoya	6hrs 50m
Kyoto	3hrs 40m
Osaka	3hrs 30m
Kobe	2hrs 50m
Hiroshima	3hrs 15m
Fukuoka	10hrs

◆JR Shikoku Bus 087-825-1657
◆Shikoku Kosoku Bus 087-881-8419
◆Footbus 087-874-7777 (Osaka & Kobe only)

Ferry

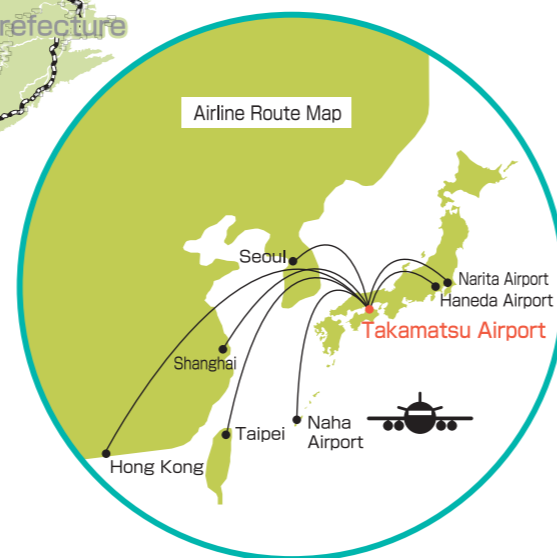
Kobe	4hrs	◆Jumbo Ferry 087-811-6688	Takamatsu
------	------	---------------------------	-----------

Expressway
Shinkansen line
JR line



Airplane Access

Haneda Airport	1hr 20m
Narita Airport	1hr 30m
Naha Airport	1hr 50m
Takamatsu Airport	087-814-3355



高松。気持ちまる、高松。

Enjoy the Energetic and Creative City

TAKAMATSU

Marine Capital of the Seto Inland Sea

Come ♪ Look ♪ Play ♪
There's so much to enjoy ♪



Please direct
sightseeing-related
inquiries here

- ◆Kagawa & Takamatsu Tourist Information ☎087-826-0170
- ◆Takamatsu Convention and Visitors Bureau ☎087-822-7060
- ◆City of Takamatsu Tourism and Exchange Section ☎087-839-2416



This is Takamatsu!

高松ってこんなところ!

Allow us to introduce the specialties of Takamatsu, Shikoku!



Understanding the heart of Kagawa: the City of Takamatsu.

Takamatsu faces the quiet waves of the Seto Inland Sea and its many beautiful islands. It is blessed with a mild climate that shifts only slightly in temperature throughout the year. In the city, there is the world famous Japanese garden known as Ritsurin Garden, the many people who visit Yashima, looking out on the Seto Inland Sea, find the experience soothing, and there is an abundance of art and shopping to be enjoyed from the port area to the shopping arcade at the city center. Everything can be found in a compact space.



Takamatsu, Kagawa Prefecture

Let us introduce some of the good things about Takamatsu!



Whether you prefer the standard style, self -serve, or a noodle-making shop, choose the type that suits you best!

- ※Standard Shop—your order is brought to you.
- ※Self-Serve Shop—after ordering, you collect your food and clean-up after eating.
- ※Noodle-Making Shop—you prepare the bowl and the chopsticks, the dashi and the soy sauce, yourself. Some places also have no seats.

Here is the real taste of Sanuki!

\ Sanuki Udon /

It is said that over a thousand years ago, Kukai (Kobo Daishi) brought udon back from China, and it spread from then on. There is fierce competition among well-established udon shops in the city for their unique dried-sardine broth and the firm texture of their noodles.

Craftsmanship



\ Takamatsu Bonsai /

Regarded as "Home of Bonsai", Takamatsu boasts 80% of the domestic market share of bonsai pine trees. In the western part of Takamatsu, in the area of Kinashi and Kokubunji, the large-scale cultivation of pine bonsai sprawls across the countryside. Overseas, particularly in European countries, popularity is high even among the youth, and bonsai enthusiasts have visited in search of "Takamatsu Bonsai."

\ Kagawa Lacquerware /



Kagawa lacquerware has been a basis of the development of the region's culture since the Matsudaira clan oversaw the Takamatsu domain in the Edo period, and is recommended for use in tea ceremonies, flower arranging, calligraphy, etc. The five techniques of kinma, zonsei, chou-shitsu, zokoku-nuri, and gotou-nuri have been designated as national traditional crafts.

\ Stonework (Aji Stone) /



Aji Stone is known as one of Japan's three great granites. At the foot of Mt. Goken located in the eastern part of Takamatsu are the towns of Mure and Aji where the stone is quarried. It is referred to as "diamond granite," and is highly valued. The stone allows for fine workmanship, and while it is still used in gravestones, statues, stone lanterns, and stone mortar, in recent years it has also been widely used in lighting equipment and other miscellaneous goods.

A habit-forming unique flavor!



\ Shoyu Mame /

These fava beans are fragrantly roasted using a horoku (unglazed tile), and soaked in a sauce made of soy sauce and sugar. In Kagawa prefecture, this has long been a regional cuisine made in each household. Chew lightly and enjoy the texture as they break apart in your mouth.

\ An-Mochi Zoni /



This is our o-zoni!

An-mochi zoni is an integral part of New Year's cuisine of Takamatsu. Using white miso, these rice cakes are made with bean paste in them. The white miso is made from the new rice harvested in the fall, and is not only found in an-mochi zoni but is abundantly used in local cuisine unique to Kagawa, such as scallions with special sauce and pickled Japanese Spanish mackerel.

\ Wasanbon /



Little lovely sweets!

The fundamental seasonings of Japanese cooking are all here in Kagawa prefecture. During the Edo period, Sanuki sugar on is a vestige from that time that has been passed down to today. Made from the cane, Wasanbon has a flavor reflective of Sanuki's peaceful climate. More mineral-rich than ordinary sugar, it has a refreshing and pleasing flavor.

Takamatsu's Four Seasons

- March ◆End of Mar~first part of Apr. Cherry Blossom Viewing Ritsurin Garden & Tamamo Park
- April ◆First part of Apr. Shionoe Sakura Festival
- May ◆Early in May Takamatsu Music Blue Festival

★Seasonal Eats: Sanuki-no-mezame Asparagus, Fava Beans, Japanese Spanish Mackerel



Spring

- June ◆Mid-June Shionoe Firefly Festival
- July ◆Start of Aug~end of Sep. Mure Gempei Ishiakari Road
- August ◆Aug. 12~14 Sanuki Takamatsu Festival

★Seasonal Eats: Shine Muscat, Madako (Octopus vulgaris), Conger-Eel



Summer

- September ◆Second Sunday of September Hyouge Festival
- October ◆Early in October Takamatsu Street Performance Festival
- ◆Mid-Oct. Sat & Sun Takamatsu Fall Festival Busshozan Daimyo's Procession
- November ◆End of November ~ first part of December Ritsurin Garden Autumn Light-Up

★Seasonal Eats: Figs, Persimmons, Sanuki Deubuku (Pufferfish)



Autumn

- December ◆All-Japan New Year's Udon Festival
- January ◆January 1st, New Year's Day
- February ◆End of January ~ first part of March Ogiyama Daffodil Walk

★Seasonal Eats: Obarabeniwase Oranges, Manba (leafy vegetable), Iidako (Octopus ocellatus), Sanuki Hime Strawberries, Olive Hamachi (Yellowtail)



Winter

冬

A Harmony of Nature and Life
The Grand Sights of the Seto Inland Sea



Must See Tourist Attractions!

Go sightseeing

Come! Look! Play!
Enjoy the
recommended
sightseeing
spots of Takamatsu!



2 \ Takamatsu Castle Ruins Historic Site Tamomo Park /

The park was built on the former grounds of Takamatsu Castle, one of Japan's three great seaside castles. The park was given the name Tamomo Park because Tamomo Castle is an old nickname for Takamatsu Castle. Seawater has been drawn into the original moat, and the feeding of red sea bream and boating can be enjoyed. Additionally, the park is full of attractions such as a collection of national cultural assets including towers (yagura) and the Hiunkaku.



Ritsurin Garden (near South Pond)

1 Place of Scenic Beauty / Ritsurin Garden

The garden spreads out at the foot of Mt. Shiun, and is proudly among the largest cultural heritage gardens of Japan. In the garden that was built over the course of more than 100 years by the former lord of Takamatsu of the Matsudaira clan, there are 6 ponds and 13 artificial hills that have been skillfully positioned, and the ever-changing, rich beauty of the garden is referred to as "Ippo Ikkei" (one step, one view). At Ritsurin's South Pond, you can enjoy the elegant boat ride of a feudal lord.



3 \ Setonaikai National Park Historic Site / Natural Monument Yashima

With its unique shape composed of a lava plateau, this has become one of the landmarks of Takamatsu. From Yashima you can look out on the islands floating in the Seto Inland Sea and Takamatsu City, and it was the first designated national park in Japan. A variety of interesting spots are scattered throughout, include the historic battlefield where the Gempei War was fought and the 84th temple of the 88 temples in the Shikoku Pilgrimage, Yashima-ji.



4 \ Shionoe Onsen /

Around 1300 years ago, this area was discovered by a distinguished priest named Gyoki. Kukai spread word of the location to others, and it is one of only 2 "People's Recreation Spas" in Shikoku, as designated by the Ministry of the Environment. This historic hot spring village surrounded by nature is dotted with a traditional Japanese inn, hotel, art museum, and so on, for you to enjoy and feel refreshed.

Top Spots!

Go sightseeing



1 \ Takamatsu Art Museum /

The museum is adjacent to Takamatsu's central shopping street, and located within walking distance of JR Takamatsu Station and the Kotoden Kawaramachi Station. The museum's collection is ever-expanding and includes "Contemporary Art in Postwar Japan", "World Art in the 20th Century and Beyond", and "Arts of Kagawa".



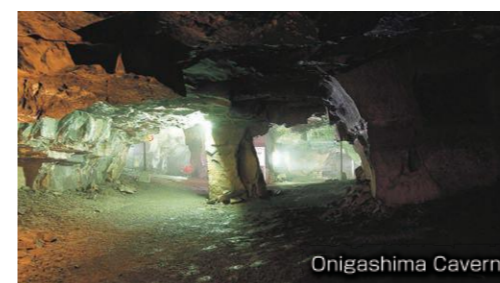
2 \ Shikoku Mura /

This is an open-air museum where you can walk and view old homes relocated here from all over Shikoku. With iconic views such as the cherry blossoms in spring, the changing of the leaves in fall—you can be surrounded by the flowers and nature of each season, and experience the lives of Shikoku's ancestors, rich with wisdom and ingenuity. In the village, an exhibition space designed by Tadao Ando, "Shikoku Mura Gallery," is also popular.



3 \ The Isamu Noguchi Garden Museum Japan /

The studio of sculptor Isamu Noguchi is now open to the public as a museum. The atmosphere is just as Noguchi left it, with his home and garden and over 150 sculptures, including some left unfinished, along with various exhibits. ※ Reservations for tours need to be made in advance of admission.



Onigashima Cavern

4 \ Megijima (Onigashima) /

Megijima is located about 20 minutes by ferry from the Takamatsu Port. There are many things to see, from the legendary Onigashima cavern of ogres to the observation platform on Washigamine Summit where you can take in a 360 degree panoramic view of the Seto Inland Sea.



Ogijima's Daffodils & Lighthouse

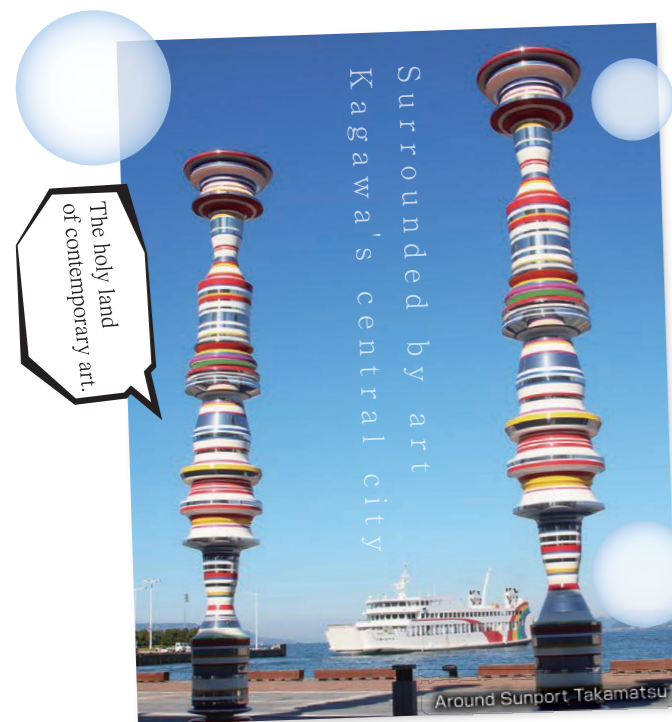
5 \ Ogijima /

Ogijima is located about 40 minutes from the Takamatsu Port by ferry. The Ogijima lighthouse (made of rare granite from Aji) and the 11 million daffodils that bloom in the township in late January to early March are famous throughout Japan.



6 \ The Shikoku Henro Pilgrimage /

The hallowed grounds of the 88 temples in Shikoku are associated with Kukai (Kobo Daishi), and taking pilgrimage to these temples visited by him is known as the "Shikoku Pilgrimage" (Shikoku Henro). In Takamatsu there are 5 temples—Kokubun-ji, Negoro-ji, Ichinomiya-ji, Yashima-ji, Yakuri-ji—that you can visit on foot or get to using public transportation. In April of 2015 it was certified as a part of Japan Heritage, and was assessed as a representative of Japanese pilgrimage culture.



The holy land
of contemporary art.



Around Megijima Port

The Setouchi Triennale (The Setouchi International Art Festival)

Held on the Islands of the Seto Inland Sea Once
Every 3 Years Check out the festival

The art downtown makes Takamatsu a charming place. If you take a walk, you will find the works by great artists, such as Isamu Noguchi and Kenzō Tange, as well as artworks from the international contemporary art festival, the 'Setouchi Triennale,' offering photo opportunities around town. And on Megijima & Ogijima, thanks to the Setouchi Triennale, a number of new art locations of Takamatsu have sprung up that incorporate contemporary art while maintaining the history and beauty of the islands. Takamatsu is alive with contemporary art and the works of famous artists that has caught the attention of tourists who visit from all over the world.

CITY
OF ARTS

The Cities of Seto are Woven with Art
TAKAMATSU

Takamatsu is proud of its works of arts that not only people from Japan but from all over the world come to see, and see again, each year.

CONTEMPORARY ART



Ogijima Exchange Center



Kagawa Prefectural Office East Building



Takamatsu Airport



There's a bonsai fairy in Takamatsu.
The City of Takamatsu is the largest producer of
pine bonsai trees in Japan.

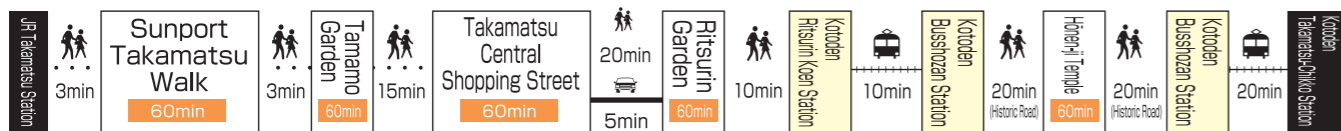


Our 3 Recommended Routes for Tourists

★Here are 3 ways to enjoy the great places Takamatsu has to offer!

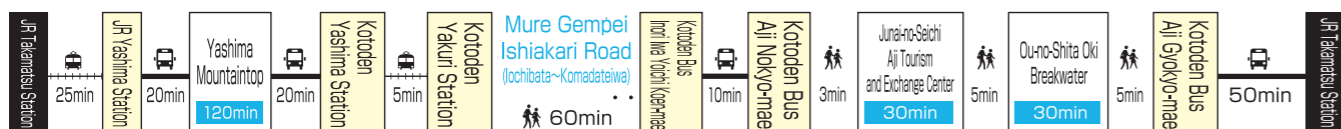
Become fluent in "Takamatsu" by visiting its famous locations! ◆Model Course Duration: 7hrs

This course lets you fill up on Takamatsu's attractions. The popular sightseeing destinations are gathered tightly around the port. Relax in the port city setting of Sunport, and experience the grandeur of the former ruling Matsudaira clan through Tamomo Park and Ritsuring Garden. You can also stroll the streets of Busshozan where buildings remain from the Edo period.



Experience firsthand the nature, culture, and history of Takamatsu... ◆Model Course Duration: 6hrs 30min

This course follows the certified Shikoku Scenic Byway, the "Gempei Roman Kaido." You will get to experience eastern Takamatsu, including the nature, history, and culture of Yashima, Mure, and Aji. You can tour a famous movie location, and the course is also suitable as a drive. Midway, you will stop by "Mure Gempei Ishiaki Road," and during a special part of the summer you can also enjoy a light-up event with illuminated stonework.



A trip to see the art that unites the sea and the city... ◆Model Course Duration: 8hrs

As venues for the Setouchi Triennale, Megijima and Ogihima have been attracting attention from all over the country as new art spots. This course allows you to enjoy exciting new art while interacting with the life and culture of the islands that has existed for a long time and to experience the artwork in the city all on the same day.

