




**HOTEL
 UNIVERSAL
 PORT™**
 OSAKA, JAPAN



“Hotel Universal Port,” an urban-type resort hotel located very close to UNIVERSAL STUDIOS JAPAN®

What are five reasons that our hotel is chosen?

“Hotel Universal Port” is easily accessible from major transportation facilities - 12 minutes from Osaka Station (Umeda) by direct train, approximately 20 minutes from JR Shin-Osaka Station of the Tokaido Shinkansen, and the Namba Area, a typical bustling shopping and entertainment district as well as 40 minutes from the Kansai International Airport. Also “UNIVERSAL STUDIOS JAPAN®” is within walking distance, and just 10 minutes by shuttle boat to Kaiyu-kan, an amusement facility.



POINT 1

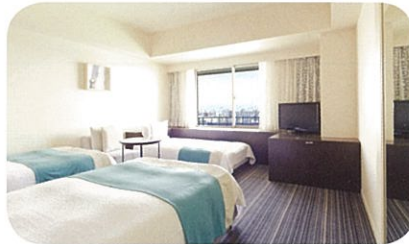
**“Our room space is No.1 in the area”
 All our rooms, equipped with completely free Wi-Fi, are quite comfortable.**

Our average room area is spacious and comfortable 35m². Also each of our rooms has a bathroom with the washing place separated from the toilet. We have a variety of rooms to accommodate couples, families, and groups. Wi-Fi use is completely free throughout the entire hotel. In addition, our rooms offer splendid views.



Standard Twin Room

- 28m² ● Capacity: 2 people
- Park side view (UNIVERSAL STUDIOS JAPAN® side)
- For couples ● 106 rooms



Superior Room

- 34m² ● Capacity: 2-3 people
- Harbor side view
- For couples and families ● 168 rooms



Deluxe Room

- 40m² ● Capacity: 2-4 people
- Park side view or Harbor side view
- For families and groups ● 170 rooms

POINT 2

Our lobby offering an enormous sense of openness and a feeling of urban-type resort hotel

Our lobby has a wide span of 115m with plenty of sunshine coming in. Tropical fish swim leisurely in the huge aquarium at the front desk providing resort atmosphere.



POINT 3

In addition to the restaurant, we have rooms for parties and meetings.

All the restaurants are directly operated by our hotel. Our very popular buffet style meals offer around 90 kinds of food for breakfast, around 50 kinds for lunch, and around 70 kinds for dinner. Also, we have restaurants for group tourists as well as rooms for parties and meetings.



POINT 4

Our hotel is built in the best location and you can fully enjoy your night time.

In front of “Universal City Station” of JR, which is just three minutes away by foot, there are a number of shopping facilities as well as restaurants and bars and you can fully enjoy your night time.

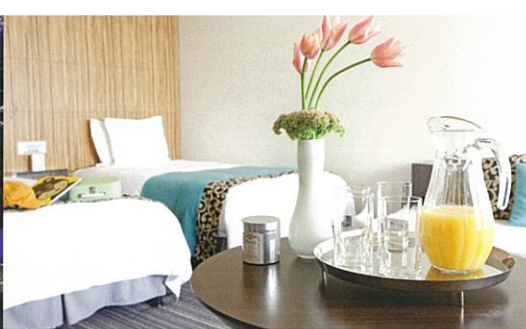


POINT 5

Entertainment Zone that can be enjoyed by people of all ages from adults through children.

Space for relaxation is offered at a café where you can have hotel-made food and sweets...Rex Shop Street where you can buy souvenirs from Osaka and daily goods and “Lounge R” a surprise lounge.





Facilities

Bed sizes (unit:mm) : R①=1100×1950/R②=1800×1950/R③=1100×2080/double bunk beds=900×1950
exB=Sofa beds (width1050) or stacking beds (width970)

● Guest rooms

Name	Area (m ²)	No. of rooms	Capacities		No. of beds	Remarks
			Per room	Total (max)		
Standard Twin Room	28	106	2	212	R① × 2	
Standard King Room	28	48	2	96	R② × 1	
Superior Room	34	168	2~3	504	R① × 2 + exB × 1	4 sets of connecting rooms (8 rooms)
Deluxe Room	40	170	2~4	680	R① × 2 + exB × 2	42 sets of connecting rooms (84 rooms)
Superior Corner Room	38	18	2~3	54	R① × 2 + exB × 1	
Deluxe Corner Room	46	24	2~4	96	R① × 2 + exB × 2	
Family Room	40	40	3~4	160	R① × 3 + exB × 1	10 sets of connecting rooms (20 rooms)
Waku Waku Wonder Room	40	10	2~3	30	R② × 1 + R① × 1	Connecting facility (Hollywood specification)
Party Room	40	10	4~6	60	a bunk × 2 + exB × 2	
Barrier-free Corner Room	38	4	2~3	12	R③ × 2 + exB × 1	Unit bath
Premium Room	46	2	2	4	R① × 2	
Total		600		1,908		

Check-in : 15:00 / Check-out : 12:00

* Normal arrangements cover guest rooms in blue
For other rooms, check charges and vacancies

Amenities in guest room

Telephone, Television(Cable/Satellite television channels, Free movie channels), Air conditioning, Refrigerator, Kettle, In-room safe, Alarm clock, In-room massage available, Free Wi-Fi, Free wired high-speed Internet, Separate bathtub and shower, Makeup/Shaving mirror, Bathrobes (on request)

Amenities in bathroom

Shampoo, Conditioner, Body soap, Toothbrush, Toothpaste, Hairdryer, Hairbrush, Hairband, Razor, Cotton buds, Cotton, Bath towel, Face towel, Hand towel, Pajamas, Slippers, Washing bowl and Chair

*Face wash, cleansing, sewing set, shower cap and matches are available at the reception desk. Please feel free to ask our staff.

● Restaurant

Name	Floor	Open	Seating capacity
PORT DINING ricorico	2nd floor	Breakfast 6:30~10:30	342
		Lunch 11:30~14:30	
		Dinner 17:30~21:30	

● Party space

Name	Floor	Capacities
PORT DINING Acqua	2nd floor	20-180 persons (for seated meals) 200 persons (for stand-up meals)

● THE REX ENTERTAINMENT PLACE

Facility	Name	Open	Seating capacity
Lounge	Lounge R	8:00~23:30	46
Café	REX CAFÉ	8:00~22:00	24
Shop	Rex Shop Street	8:00~22:00	-

● Other facilities

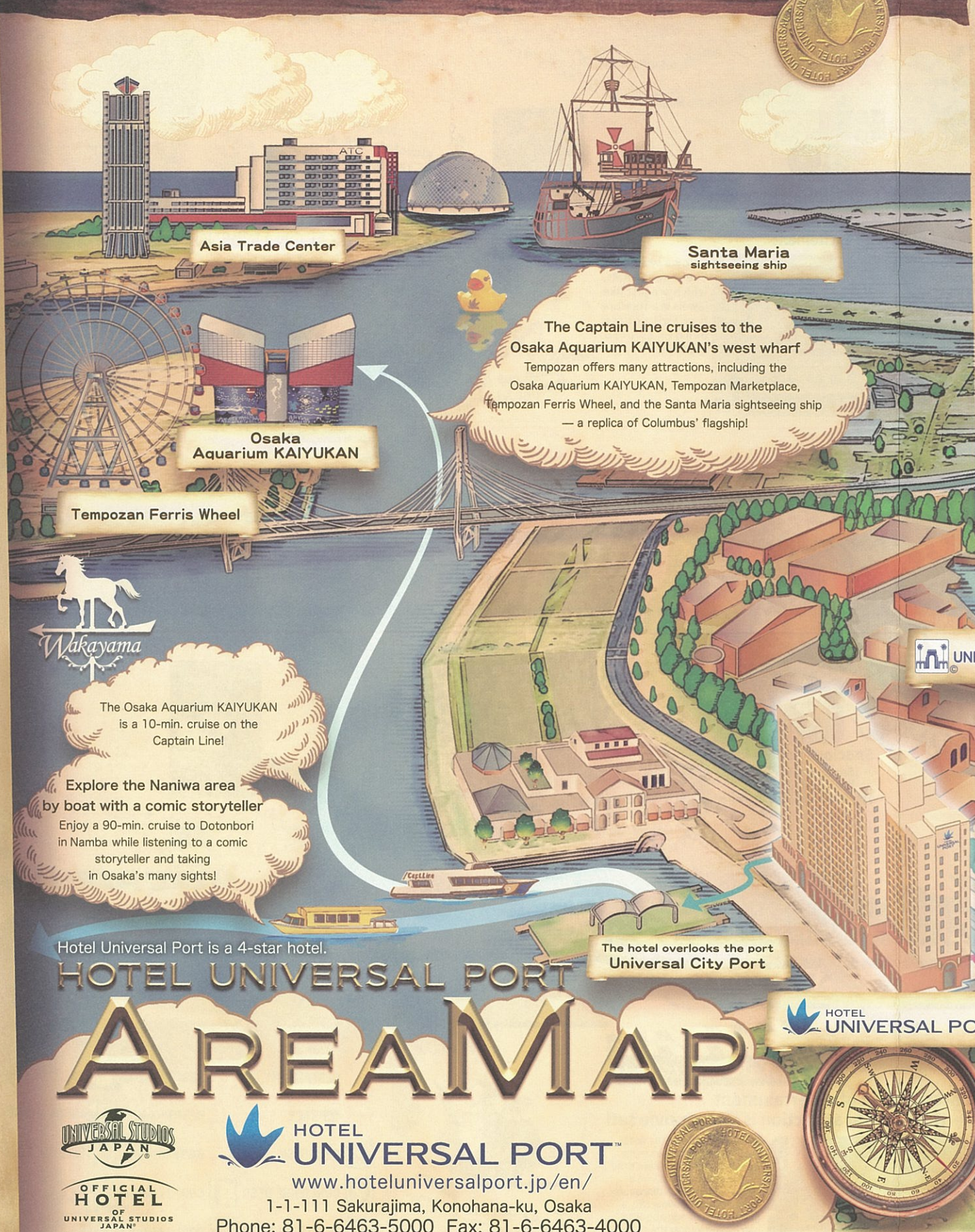
Facility	Name	Open
Shop	Universal Studios Store	7:00~21:30
Internet corner	Web station (free)	-
Refreshing salon	Unwind	Salon 15:00-23:00 Massage in guest room 17:00-27:00 (last call 26:00)

· Ticket counters (UNIVERSAL STUDIOS JAPAN®, Kaiyu-kan [aquarium]) · Vending machines (alcoholic beverages, juice, sweets, detergent) · Coin lockers · Coin laundry
· Parking space (for 143 cars) · No parking spaces for oversized cars (no parking for buses, either) *Please ask us at the front desk for home delivery.



[Information on Access]

- Kansai International Airport
Ab't 50 min (car) / Ab't 70 min (train)
- Shinsaibashi / Namba
(typical downtown area in Osaka)
Ab't 25 min (car) / Ab't 20 min (train)
- Osaka Station (Umeda)
Ab't 15 min (car) / Ab't 15 min (train)
- Kyoto
Ab't 60 min (car) / Ab't 55 min (train)
- Kobe
Ab't 45 min (car) / Ab't 50 min (train)



Asia Trade Center

Santa Maria
sightseeing ship

Osaka
Aquarium KAIYUKAN

Tempozan Ferris Wheel

Wakayama

The Osaka Aquarium KAIYUKAN
is a 10-min. cruise on the
Captain Line!

Explore the Naniwa area
by boat with a comic storyteller
Enjoy a 90-min. cruise to Dotonbori
in Namba while listening to a comic
storyteller and taking
in Osaka's many sights!

Hotel Universal Port is a 4-star hotel.

HOTEL UNIVERSAL PORT

AREAMAP

The hotel overlooks the port
Universal City Port

HOTEL
UNIVERSAL PORT

UNIVERSAL CITYWALK OSAKA™

JR Universal-city Station

The Captain Line cruises to the
Osaka Aquarium KAIYUKAN's west wharf
Tempozan offers many attractions, including the
Osaka Aquarium KAIYUKAN, Tempozan Marketplace,
Tempozan Ferris Wheel, and the Santa Maria sightseeing ship
— a replica of Columbus' flagship!

Traffic Access

Price is subject to change without notice.

From Kansai International Airport by train			
JR Kansai Airport Sta.	JR Kansai Airport Rapid Service train Approx. 60 min.	JR NISHIKUJOYU Sta.	JR Yumesaki Line Approx. 5 min.
		JR UNIVERSAL CITY Sta.	Walk Approx. 3 min.
			¥1,160 Approx. 70 min.
From Kansai Airport by bus			
Kansai International Airport	Shuttle Bus Approx. 70 min.	UNIVERSAL STUDIOS JAPAN®	Walk Approx. 8 min.
			¥1,500 Approx. 80 min.
From Osaka International Airport (Itami) by bus			
OSAKA International Airport	Shuttle Bus Approx. 45 min.	UNIVERSAL STUDIOS JAPAN®	Walk Approx. 8 min.
			¥900 Approx. 55 min.
From Umeda (Osaka) by train			
JR OSAKA Sta.	JR Loop Line, JR Yumesaki Line Approx. 10 min.	JR UNIVERSAL CITY Sta.	Walk Approx. 3 min.
			¥170 Approx. 15 min.
From Shin-Osaka (Osaka) by train			
JR SHIN-OSAKA Sta.	JR Kyoto Line Approx. 4 min.	JR OSAKA Sta.	JR Loop Line, JR Yumesaki Line Approx. 10 min.
		JR UNIVERSAL CITY Sta.	Walk Approx. 3 min.
			¥210 Approx. 20 min.
From Namba (Osaka) by train			
OSAKA NAMBA Sta.	Hanshin Namba Line Approx. 8 min.	JR NISHIKUJOYU Sta.	JR Yumesaki Line Approx. 5 min.
		JR UNIVERSAL CITY Sta.	Walk Approx. 3 min.
			¥360 Approx. 20 min.
From Kobe by train			
JR SANNOMIYA Sta.	JR Kobe Line Approx. 25 min.	JR OSAKA Sta.	JR Loop Line, JR Yumesaki Line Approx. 10 min.
		JR UNIVERSAL CITY Sta.	Walk Approx. 3 min.
			¥620 Approx. 20 min.
From Kyoto by train			
JR KYOTO Sta.	JR Kyoto Line Approx. 30 min.	JR OSAKA Sta.	JR Loop Line, JR Yumesaki Line Approx. 10 min.
		JR UNIVERSAL CITY Sta.	Walk Approx. 3 min.
			¥780 Approx. 45 min.
From Nara by train			
JR NARA Sta.	JR Yamatoji Line Approx. 45 min.	JR NISHIKUJOYU Sta.	JR Yumesaki Line Approx. 5 min.
		JR UNIVERSAL CITY Sta.	Walk Approx. 3 min.
			¥780 Approx. 55 min.
From Tokyo by train			
JR TOKYO Sta.	Tokaido Shinkansen Approx. 150 min.	JR SHIN-OSAKA Sta.	JR Kyoto Line Approx. 4 min.
		JR OSAKA Sta.	JR Loop Line, JR Yumesaki Line Approx. 10 min.
		JR UNIVERSAL CITY Sta.	Walk Approx. 3 min.
			¥14,060 Approx. 170 min.

To go to
UNIVERSAL STUDIOS JAPAN®,
follow the Red Route downhill
and under the overpass,
then take either the elevator or
stairs on the left up to the main gate.

The Blue Route is the most direct to the hotel,
but guests with a stroller or wheeled
luggage can avoid stairs by turning left when exiting
the ticket gates and following the
Green Route along the station building.



HOTEL
UNIVERSAL PORT™
www.hoteluniversalport.jp/en/
1-1-111 Sakurajima, Konohana-ku, Osaka
Phone: 81-6-6463-5000 Fax: 81-6-6463-4000

PORTMAP

Message from Captain Port

Dear Guests,
Have you had a chance to explore Hotel Universal Port?
Its many interesting features and fun photo opportunities
can be found nowhere else.
They are marked on this map with a big red X,
so be sure to check them all out for a
truly memorable visit!

Happy sailing!

Captain Port

PORT DINING

PORT DINING ACQUA
Perfect for sophisticated
events & special gatherings.



With breathtaking
views of the harbor
and UNIVERSAL
STUDIOS JAPAN®!



PORT DINING ricorico
Entertainment Restaurant
filled with Excitement



Enjoy a variety of
Chef's specialties,
which are just like
jewels in a treasure
box. Full course
dinner is also
available.



The blue-lit "underwater"
elevators are an attraction
in themselves.

REFRESH SALON UNWIND
Relax your mind and body



Enjoy resort living and
luxurious elegance in
the salon.



Watch out for
floating jellyfish!



THE REX

THE REX ENTERTAINMENT PLACE
A primeval world of giant dinosaurs!
How many can you spot?



Lounge R is filled with giant hanging
fossils, and in the REX CAFE you'll find
dinosaurs at every turn. Universal Port
offers a hotel experience like no other.
And be sure to check out the REX
Shop, where you'll find a wide
selection of Osaka souvenirs and
sundry goods.

The riverside promenade



Don't forget to
take your picture
with a movie star!

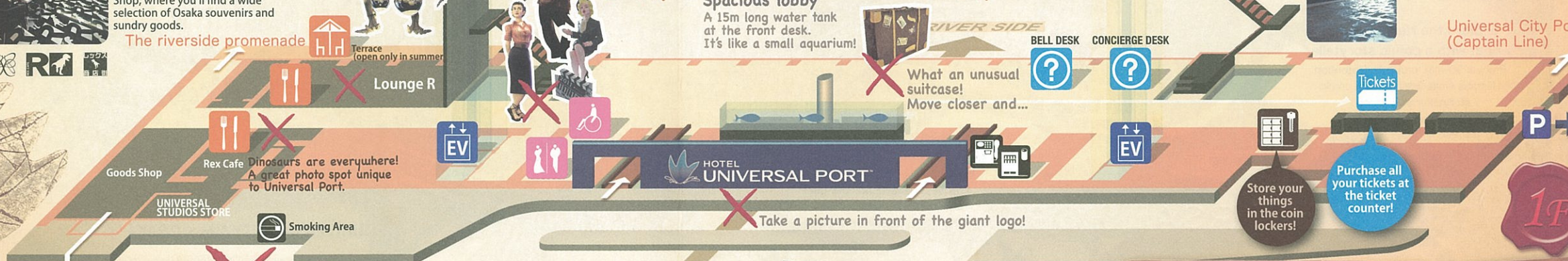
Spacious lobby

A 15m long water tank
at the front desk.
It's like a small aquarium!

RIVER SIDE

What an unusual
suitcase!
Move closer and...

Universal City Port
(Captain Line)



UNIVERSAL STUDIOS JAPAN®
To JR Universal-city Station

In front of the entrance is the ideal photo spot.
Capture great memories while enjoying
the thrilling experience of this themed attraction!

Enter a world of entertainment
— this themed attraction is like a movie set!

"Take 1" Action!!

When you arrive at the hotel
you'll feel as if you've stepped
right into a movie. There's the
rubble of the BAR REX on a
street destroyed by dinosaurs.
An abandoned yellow cab, a
giant dinosaur egg about to
hatch...and look at the
footprints! A wailing siren, eerie
lighting, and misty vapors—
there's so much to experience in
this thrilling attraction!



- RESTAURANT
- TERRACE
- BELL DESK
- CONCIERGE DESK
- TICKET COUNTER
- ELEVATORS
- RESTROOMS
- RESTROOMS
- BABY ROOM
- COIN LOCKERS
- COIN LAUNDRY
- HOUSE PHONE
- PUBLIC TELEPHONE
- VENDING MACHINES
- SMOKING AREA
- Free Wi-Fi Service
Enjoy free Wi-Fi in all areas.