

The Seikan area, packed with local attractions
For new multi-destination travel

With the opening of the Hokkaido Shinkansen bullet train line, four cities along the line in the Seikan area—Aomori, Hachinohe, Hakodate and Hirosaki—have been working together to press forward in developing attractive tourist destinations by highlighting their respective local characteristics.

The Shinkansen line has brought the four cities lying across the Tsugaru Strait closer to each other than ever, creating the Seikan area—a new tourist area consisting of Aomori Prefecture and the southern Hokkaido area.

With rich and distinctive histories and cultures, these four cities have a host of attractive tourist resources that can be found only there.

The Shinkansen line has also enabled multi-destination travel in the four cities, making trips to the Seikan area even more appealing.

We have published this brochure featuring trips to the four cities, titled *Seikan Area Multi-destination Travel Guide: Aomori, Hachinohe, Hakodate and Hirosaki*, out of hope that we will make the most of the opportunity created by the Shinkansen line's opening to have more people appreciate the appeal of the Seikan area.

We hope many people will visit the Seikan area as we continue to engage communities here to enable visitors to enjoy our sightseeing resources to the fullest.

We sincerely look forward to your visit.

Inquiries

Aomori

Website:
https://www.atca.info/atca_language/index_en.html

Contact:
Aomori Tourism and Convention Association
Aomori Chamber of Commerce and Industry Hall 4F,
Shinmachi 1-2-18, Aomori
Phone: +81-17-723-7211 (No English-speaking staff available)
E-mail: info@atca.info

Hachinohe

Website:
<https://visithachinohe.com/en/>

Contact:
VISIT HACHINOHE
(general incorporated foundation)
Phone: +81-178-70-1110
E-mail: info@visithachinohe.or.jp

Hirosaki

Website:
<https://www.hirosaki-kanko.or.jp/en/>

Contact:
Hirosaki Municipal Tourist Center
Phone: +81-172-37-5501
E-mail: htcb07@jomon.ne.jp

Hakodate

Website:
<https://www.hakodate.travel/en/>

Contact:
Contact Center for Foreign Tourists,
City of Hakodate
Phone: +81-138-23-5440
Inquiry Form
<https://www.hakodate.travel/en/contact-en.html>

Seikan Area Multi-destination Travel Guide:

Aomori, Hachinohe, Hakodate and Hirosaki



Seikan Area Tourist City Conference

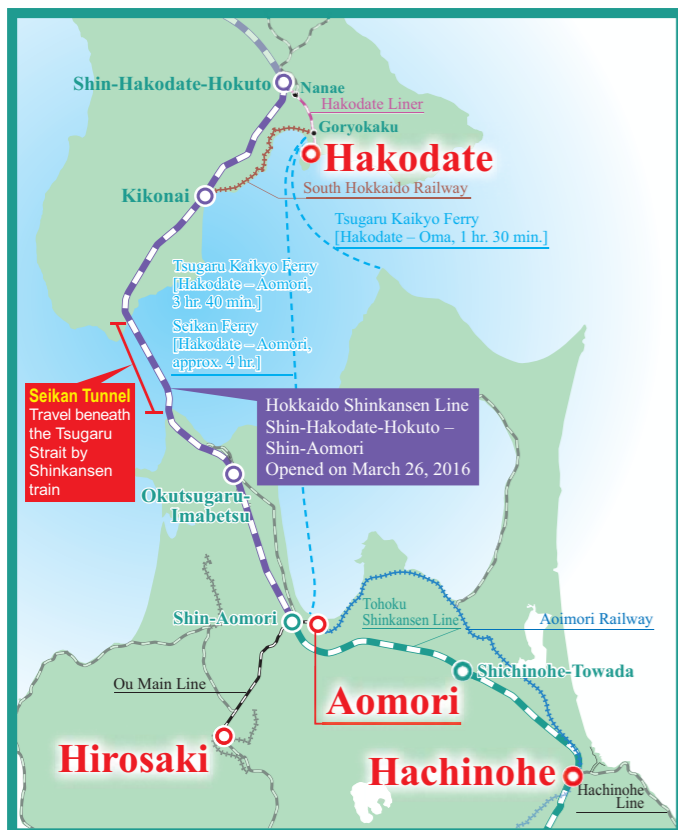
Access

Multi-destination travel to the ever-closer Seikan area

Hayabusa and Hayate offer 13 round trips daily on the Hokkaido Shinkansen Line.

Hayabusa Tokyo – Shin-Hakodate-Hokuto stations: 10 round trips/day
Sendai – Shin-Hakodate-Hokuto stations: 1 round trip/day

Hayate Morioka – Shin-Hakodate-Hokuto stations: 1 round trip/day
Shin-Aomori – Shin-Hakodate-Hokuto stations: 1 round trip/day



JAL and ANA offer visitors coming from abroad discounts on connecting domestic flights.

JAL Japan Explorer Pass



ANA Experience JAPAN Fare



Domestic flights serving Aomori Airport

Sapporo – Aomori (45 min.)	5 flights/day
Tokyo – Aomori (75 min.)	6 flights/day
Nagoya – Aomori (80 min.)	4 flights/day
Osaka – Aomori (90 min.)	6 flights/day

Domestic flights serving Hakodate Airport

Sapporo – Hakodate (40 min.)	8 flights/day
Okushiri – Hakodate (30 min.)	1 flight/day
Tokyo – Hakodate (80 min.)	8 flights/day
Nagoya – Hakodate (90 min.)	2 flights/day
Osaka – Hakodate (100 min.)	2 flights/day

As of September 2019

★ Bargain Railway Information ★

JR East-South Hokkaido Rail Pass

This is a free pass sold only to travelers from overseas visiting Japan. This pass lets you ride on the Shinkansen and limited express trains in the southern Hokkaido area (including Sapporo, Hakodate and New Chitose Airport) and the eastern Japan area (including the Tohoku region) as a joint product from JR EAST and JR HOKKAIDO.

www.jreasthokkaido.com/e/

Period of Validity and Sales Price

This pass is valid for any six days in the 14-day period from the day it is issued (Flexible six days)
*The day the pass is issued is the day it is exchanged (when purchased outside of Japan) or sold (when purchased in Japan).

Sales outside Japan	Adult	¥26,900	Child	¥13,450
Sales within Japan	Adult	¥27,930	Child	¥13,960

Range of Use

This pass can be used for unlimited travel using reserved or non-reserved seats of ordinary cars on local, express and limited express (including the Shinkansen) trains on the JR HOKKAIDO lines in the free area, JR EAST lines (including BRT), Izu Kyuko Line, Tokyo Monorail, Aomori Railway, Iwate Galaxy Railway (IGR) and Sendai Airport Transit. This pass can also be used to travel on ordinary cars of limited expresses on Tobu lines (if either the departure or destination station is on a JR line), for example, "Nikko," "SPACIA Nikko," "Kinugawa" and "SPACIA Kinugawa" as well as local trains between Shimo-Imaichi and Tobu-Nikko/Kinugawa-Onsen on the Tobu Railway lines.
*It is not possible to use this pass to board the South Hokkaido Railway or Hakodate city tram.

Purchase and Exchange Locations

JR-HOKKAIDO Area

●JR Information Desks: Sapporo Station and New Chitose Airport Station ●Stations: Shin-Hakodate-Hokuto Station and Noboribetsu Station
●Travel Service Centers (Twinkle Plaza): Sapporo Station and Hakodate Station

JR-EAST Area

●JR EAST Travel Service Centers: Narita Airport Station, Airport Terminal 2 Station, Tokyo Monorail Haneda Airport International Terminal Station, Tokyo Station and Shinjuku Station
●Stations: Narita Airport and Airport Terminal 2
●Travel Service Centers (View Plaza): Yokohama Station, Mito Station, Fukushima Station, Sendai Station, Yamagata Station, Morioka Station, Hachinohe Station, Aomori Station, Akita Station, Shinagawa Station*, Shibuya Station*, Ikebukuro Station (West Exit)* and Ueno Station*
*Stations marked with an asterisk handle sales only
●Information Centers (The following locations handle exchanges only): Shinagawa Station General Information Counter, Shibuya Station Information Center, Shinjuku Station (East Exit) Information Center, Ikebukuro Station Information Center, Ueno Station (Central Exit) General Information Counter and Sendai Airport Transit Sendai Airport Station "JR EAST PASS Exchange office"

Japan Rail Pass

The JAPAN RAIL PASS is a pass provided jointly by the six companies comprising the Japan Railways Group (JR Group). This is a great value way to travel all over Japan by train.

www.japanrailpass.net/en/

Period of Validity and Sales Price

This pass is valid for 7, 14 or 21 consecutive days beginning on the date it is first used.

*You can choose any day as the starting date within a one month period from day on which you turn in your Exchange Order for the pass.

Type	Green Car		Ordinary Car	
Duration	Adult	Child	Adult	Child
7 days	¥39,600	¥19,800	¥29,650	¥14,820
14 days	¥64,120	¥32,060	¥47,250	¥23,620
21 days	¥83,390	¥41,690	¥60,450	¥30,220

Range of Use

●All JR Group lines in the Shinkansen (except any reserved or non-reserved seat on "NOZOMI" and "MIZUHO" trains), limited express trains, express trains, rapid trains, local trains and the BRT (with some exceptions) ●Tokyo Monorail ●Aomori Railway services between Aomori and Hachinohe ●IR Ishikawa Railway Line between Kanazawa and Tsubata
*It is possible to use the pass only on limited occasions for Aomori Railway, IR Ishikawa Railway and Ainokaze Toyama Railway. Please check the website for details.
●Local routes of JR Bus companies. (This excludes some local routes. The routes that can be taken are subject to change.) *It is not possible to ride the highway bus routes of JR Bus companies. ●JR WEST Miyajima Ferry (between Miyajima and Miyajimaguchi) *The hydrofoil ferry service operated by JR KYUSHU between Hakata and Pusan (Korea) is not covered
*It is not possible to use this pass to board the South Hokkaido Railway or Hakodate city tram.

Purchase and Exchange Locations

The JAPAN RAIL PASS is sold by travel companies and agencies overseas which sell products for travelers from overseas visiting Japan (e.g. the JAPAN RAIL PASS). Please turn in your Exchange Order for a pass after arriving in Japan. You can turn in your Exchange Order at JAPAN RAIL PASS exchange locations in the main JR stations.
*You cannot purchase the JAPAN RAIL PASS in Japan.

JAPAN RAIL PASS PRECAUTIONS ☺There may be some excluded trains and additional charges within the range of use on JR lines. ☺If you use a private railway company line, you will have to pay the fare and fee for each section you use. ☺Please check our website or contact the JR companies directly for other detailed information.



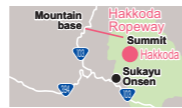
Aomori



Autumn leaves on the Hakkoda Mountains

On the Hakkoda Mountains, leaves of various tree varieties, including beech and maple, change colors in October. The approximately 10-minute ropeway ride is a great way to enjoy the whole face of the land covered with a bright carpet of orange. The Hakkoda Gourd Line footpath, which extends from the ropeway's Summit Park Station, weaves through alpine plant communities and marshes. The walking trail has two courses, an accessible 30-minute course and a 60-minute one, making it perfect for people of all ages and ability levels.

(Period of autumn foliage: late September – October)



Address: Aza Kansuzawa 1-12, Oaza Arakawa, Aomori
Access: Approx. 80 min. by JR Bus bound for Towadako (Lake Towada) from JR Aomori Station to the Ropeway Eki-mae stop
Inquiries: Hakkoda Ropeway
Phone: +81-17-738-0343
(No English-speaking staff available)

The soft rime of the Hakkoda Mountains



The Hakkoda Mountains show diverse views that change with season. The snow and ice covering the *Aomoritodomatsu* (*Abies mariesii*) trees on the hillsides gradually turn into soft rime to create so-called “snow monsters” (soft rime season: January – February).

Namioka Castle, a national historic site

It is believed that Namioka Castle was built around 1460 by descendants of Kitabatake Chikafusa and Akiie, who served Emperor Go-Daigo during the period of the Northern and Southern Courts. It is the first castle site designated as a national historic site in Aomori Prefecture, and is also famous for its cherry blossoms.



Address: Aza Goshō 14-1, Oaza Namioka, Namioka, Aomori
Access: 15 min. on foot from Hamaoka Station
Inquiries: Namioka Castle Site Information Center
Phone: +81-172-62-0363 (No English-speaking staff available)



Hirosaki Castle and cherry blossoms at Hirosaki Park

Built in 1611, Hirosaki Castle was the seat of the feudal Tsugaru clan, which unified the Tsugaru region. The current castle keep, constructed in 1811, has been temporarily relocated since the summer of 2015 for the repair of the castle's stone walls. The surrounding Hirosaki Park is one of Japan's largest cherry blossom viewing spots and features approximately 2,600 cherry trees in 52 varieties, including Yoshino cherry, weeping cherry and double-petaled cherry. When petals whirl in the wind, it's a spectacular experience to walk through a pink tunnel of cherry blossoms in the west moat area and enjoy the view of cherry blossoms reflected on the water of the moat surrounding the castle. The view of cherry blossoms illuminated at night is also a must-see.

(Hirosaki Cherry Blossom Festival/Regular open season: April 23 – May 5)



Address: Hirosaki Park, Shimoshirogane-cho 1, Hirosaki
Access: Approx. 17 min. by 100-yen Loop Bus from JR Hirosaki Station to the Shiyakusho-mae stop
Inquiries: Hirosaki Municipal Tourist Center
Phone: +81-172-37-5501 (English-speaking staff available)

Tinted autumn leaves on Mount Iwaki

In late September, Mount Iwaki shows a beautiful gradation of autumn leaves that go from green to red from its foot upwards. By the time green leaves at the foot turn red, the mountaintop is covered with the first snow of the season. The fiery foliage, white summit and green conifers make a stunning contrast that changes every day as autumn deepens.

(Period of autumn foliage: late September – mid-October)



Location: Near the foot of Mount Iwaki
Access: Approx. 1 hr. 30 min. by Konan Bus from JR Hirosaki Station
Inquiries: Iwakisan Tourist Association
Phone: +81-172-83-3000 (No English-speaking staff available)



Tsugaru Iwaki Skyline



Tsugaru Iwaki Skyline is a toll road of less than 10 kilometers with 69 hairpin curves. The breathtaking views that come into sight between the beautiful beech forests as you drive along the road are not to be missed.

Recommended Sights

Aomori Hirosaki Hachinohe Hakodate



Hachinohe



Tanesashi Coast in Sanriku Fukko (Reconstruction) National Park

The Tanesashi Coast serves as a northern gateway to Sanriku Fukko (Reconstruction) National Park, which includes a beautiful Pacific coastline that extends 250 kilometers from Aomori to Miyagi prefectures. The Tanesashi Coast features undulating natural grass terrain that stretches out as far as the water's edge, and a footpath extending to its north is listed as one of the top 100 trails in Japan. A narrow path in pine woods there provides stunning views of oddly shaped rocks, and a campground is opened from April through to October for people to revel in the natural beauty of the coast. The Tanesashi Coast also has many scenic viewpoints, including the Ashigezaki Viewpoint, that feature panoramic views of the Pacific Ocean and Tanesashi Coast.



Address: Tanakubo 14-167, Oaza Same-machi, Hachinohe
Access: Approx. 3 min. on foot from Tanesashikaigan Station on the JR Hachinohe Line
Inquiry: Tanesashi Coast Information Center
Phone: +81-178-51-8500
(No English-speaking staff available)



Tinted autumn leaves at Lake Aoba in the Nango area

Lake Aoba was created by the construction of the Yomasari Dam. It was named after the Aoba flute that a historical figure named Taira no Shigemori (1138-1179) is said to have brought with him when he fled into a village that was later submerged when the dam was built. Scenic viewpoints on the lake's shores afford seasonal panoramas, and roofed pleasure boats operating in autumn provide an opportunity to unwind and enjoy the lake with colorful autumn foliage.

(Period of autumn foliage: late October – early November)



Address: Nango Shimamori, Hachinohe
Access: Approx. 40 min. by car from downtown Hachinohe
Inquiries: Nango Tourist Association
Phone: +81-80-1800-8918 (No English-speaking staff available)

Michinoku Coastal Trail



Michinoku Coastal Trail is a nature trail covering a total length of approximately 1,000 km that connects Kabushima Island, Hachinohe City and Soma City, Fukushima Prefecture. You can walk as you like at your own pace. The entire trail was opened in June 2019.



Cherry blossoms at Goryokaku Park

The Goryokaku Fort, a Special Historic Site of Japan and the site of the Battle of Hakodate in the last stage of the Boshin War, is known as a popular cherry blossom viewing spot. It features approximately 1,600 cherry trees. At the height of the bloom, the cherry blossoms paint the star-shaped fort pink. (Blooming season: late April – early May)

At the heart of Goryokaku Park sits the restored Hakodate Magistrate's Office, an administrative institution established by the shogunate to take charge of the development of Ezochi, as Hokkaido was then known, and to serve as a window to foreign countries after the opening of Hakodate Port. The imposing building surrounded by pine trees evokes the atmosphere of the closing days of the Edo period (1603-1868), breathing life into history. The Goryokaku Tower's observatory affords incredible panoramic views of the Goryokaku Fort.



Address: Goryokaku-cho 44, Hakodate
Access: Tram bound for Yunokawa from JR Hakodate Station to the Goryokaku Koen-mae stop, and then approx. 15 min. on foot; Or Hakodate Eki stop to the Goryokaku Koen Iriguchi stop, and then approx. 10 min. on foot
Inquiries: Flower and Green Division, Hakodate Housing and City Facilities Public Corporation
Phone: +81-138-40-3605 (No English-speaking staff available)

Tour of slopes in Motomachi

As autumn deepens, trees on slopes in Hakodate take on autumn hues, including rowan trees at Daisan-zaka Slope, ivy on church walls and tall maple trees standing on the Old British Consulate premises. The leaves change color every day against the backdrop of retro-style streetscapes, and the contrast they make with the oceanic views from the top of the slopes captivates many visitors. Motomachi is a great place to walk around with a camera in the search for beautiful scenery.

(Period of autumn foliage: mid-October – early November)



Location: Motomachi, Hakodate
Access: On foot from the Jujigai or Suehiro-cho tram stop
Inquiries: Tourism Promotion Section, Tourism Department, City of Hakodate
Phone: +81-138-21-3323 (No English-speaking staff available)



A night view of fishing boat lamps in Hakodate



Lamps on squid-fishing boats faintly lighten up the dark sky and sea, creating a truly striking sight for which Hakodate, the city of squids, is noted.

Aomori



Aomori Nebuta Festival

Aomori Nebuta Festival, designated as a national important intangible folk cultural property in 1980, is one of the major fire festivals in Japan. Annually held for six days from August 2, it is the city's most exciting event of the year drawing visitors from across Japan. On the last day of the festival, massive Nebuta floats parade through the streets during the day and are ferried around on boats at night as fireworks light up the night sky. The Nebuta Museum Wa Rasse in the city offers visitors an opportunity to experience the sights and sounds of the Aomori Nebuta Festival all year round. Visitors can see four large Nebuta floats and try dancing to the festival music.

Period: August 2 – 7
Venue: Downtown Aomori City
Access: Approx. 8 min. on foot from JR Aomori Station
Inquiries: Aomori Tourism and Convention Association
Phone: +81-17-723-7211 (No English-speaking staff available)

Seikan Ferry Memorial Ship "Hakkoda-Maru"



This ferryboat was in service for about 23 years, connecting Japan's main island of Honshu and Hokkaido. The vessel stopped playing its role in 1988, and was moored at its present location in 1990. It has since been open to the public as a museum.

Sannai Maruyama Jomon Culture Center

The Sannai-Maruyama Site contains the remains of a large-scale village dating back to the Jomon period of approximately 5,900 to 4,200 years ago. Reconstructed buildings and numerous exhibits show what a village in the Jomon period looked like.



Address: Aza Maruyama 305, Sannai, Aomori
Access: Approx. 30 min by municipal bus from Aomori Station to Sannai Maruyama Site or approx. 20 min. by Nebuta-go Aomori Shuttle Route Bus from Shin-Aomori Station
Inquiries: Sannai Maruyama Jomon Culture Center
Phone: +81-17-766-8282 (No English-speaking staff available)



Tsugaru shamisen

One plays Tsugaru shamisen as if it were a percussion instrument, powerfully hitting the strings with a plectrum. The Tsugaru-han Neputa Village tourist spot provides an opportunity for visitors to enjoy live performances of Tsugaru shamisen and to try their hand at playing the instrument themselves—a valuable hands-on experience. At Japanese-style Tsugaru shamisen pubs in the city, you can enjoy local dishes while listening to dynamic live performances. The powerful sound of Tsugaru shamisen fascinates listeners as it stirs in the depths of their hearts.

Tsugaru-han Neputa Village
Address: Kamenoko-machi 61, Hirosaki
Inquiries: Tsugaru-han Neputa Village
Phone: +81-172-39-1511 (No English-speaking staff available)
Tsugaru-han Neputa Village Website: www.neputamura.com (Japanese)

Japanese-style Tsugaru shamisen pubs
Locations: In Hirosaki
Inquiries: Hirosaki Municipal Tourist Center
Phone: +81-172-37-5501 (English-speaking staff available)

Tsugaru-han Neputa Village

Life-size Neputa floats are exhibited at this tourist spot, where visitors can play drums and listen to live music of the Tsugaru shamisen. It is also possible to see how a small goldfish Neputa is created and to experience traditional folk crafts in the Tsugaru region. Various gifts and souvenirs are also available.



Address: Kamenoko-machi 61, Hirosaki
Access: Approx. 15 min. by bus from JR Hirosaki Station to the Kamenoko Machikado stop
Inquiries: Tsugaru-han Neputa Village
Phone: +81-172-39-1511 (No English-speaking staff available)



Saishoin Five Storied Pagoda



This pagoda, built during the Edo period (1603-1868) without using any nails, is known as the most beautiful pagoda in Japan's northeastern Tohoku region. It has been designated as a national important cultural property.

Recommended Cultures and Histories

Aomori Hirosaki Hachinohe Hakodate



A variety of events add excitement to the short summer and long winter in northern Japan. The cities in the Seikan area have their own unique landscapes. Experience the wholly different cultures and histories of those geographically close cities.

Hachinohe



Hachinohe Sansha Taisai Festival

This festival boasts a history and tradition dating back 300 years and is included in the UNESCO Intangible Cultural Heritage list. Annually celebrated from July 31 to August 4, the festival features parades of 27 gorgeously decorated floats that add excitement to the summer in Hachinohe. The term Sansha means "three shrines" and refers to Ogami, Chojasanshinra and Shimmei shrines in the city. The procession of portable shrines from these three shrines is followed by that of decorated floats, and shrine maidens and performers of Shinto music and dance (kagura), tiger dance and lion dance also parade through the streets to the delight of onlookers along the streets. In the festival eve event (July 31) and closing event (August 4), those floats are lined up in the city center for illumination. The processions on August 1 and 3 are joint parades of portable shrines from the three shrines and decorated floats, and on August 2 the floats parade in the evening.

Period: July 31 – August 4
Venue: Downtown Hachinohe City
Access: Approx. 10 min. on foot from JR Hon-Hachinohe Station on the Hachinohe Line; Or approx. 20 min. by car or bus from JR Hachinohe Station
Inquiries: VISIT HACHINOHE (general incorporated foundation)
Phone: +81-178-70-1110 (English-speaking staff available)

Hachinohe Enburi Festival

Hachinohe Enburi is a local dance performance that ushers in spring in the region and has been designated a national important intangible folk cultural property. Dancers, called Tayu, wearing headdresses in the shape of a horse's head express their prayers for a good harvest in the year by wildly swinging their heads close to the ground. Between those performances, a children's Shukufuku-gei performance and various other programs delight spectators. Every year, approximately 250,000 people watch the event, when more than 30 groups of dancers from within and outside the city perform in various parts of the city.



Period: February 17 – 20
Venues: Downtown Hachinohe, Shimin Hiroba in front of Hachinohe City Hall, Kojokaku, etc.
Access: Approx. 10 min. on foot from JR Hon-Hachinohe Station on the Hachinohe Line
Inquiries: VISIT HACHINOHE (general incorporated foundation)
Phone: +81-178-70-1110 (English-speaking staff available)



Kushihiki Hachimangu Shrine



This shrine, the major guardian shrine of the Nanbu clan in feudal years, keeps two national treasures: Akaito-Odoshi Yoroi (armor laced with red threads) and Shiroito-Odoshi Tsumadori Yoroi (armor with white triangular-patterned thread lacing).



Hakodate Christmas Fantasy

Launched in 1998, Hakodate Christmas Fantasy is the city's signature winter event. Its highlight is the Happy Fir Tree, an approximately 20-meter-high Christmas tree that floats on a barge in front of a row of waterfront warehouses (the Kanemori Red Brick Warehouses). The tree, sent every year from Canada's Halifax, a sister city of Hakodate, is adorned with approximately 150,000 lights, glittering fantastically. The daily tree-lighting ceremony and fireworks launched into the sky above the giant tree create a romantic atmosphere. Soup-bar stalls lining the venue's main street serve hot soup cooked with locally sourced ingredients, helping visitors stay warm in the cold.



Period: December 1 – 25
Venue: Kanemori Red Brick Warehouse area in Suehiro-cho, Hakodate
Access: Approx. 10 min. on foot from JR Hakodate Station; Or approx. 5 min. on foot from the Jujigai tram stop
Inquiries: Hakodate Christmas Fantasy Executive Committee (inside the Hakodate International Tourism and Convention Association)
Phone: +81-138-27-3535 (No English-speaking staff available)

Streetscapes of the Western area

The Western area of Hakodate, one of the first five ports in Japan to open its doors to foreign trade, features unique streetscapes that have incorporated foreign cultures. The Old Public Hall of Hakodate Ward, Kanemori Red Brick Warehouses, Hakodate Orthodox Church and other churches in the area are major tourist attractions and are surrounded by hosts of buildings that blend both Japanese and Western styles of architecture.



Locations: Motomachi and other areas in Hakodate
Inquiries: Tourism Promotion Section, Tourism Department, City of Hakodate
Phone: +81-138-21-3323 (No English-speaking staff available)



Hakodate

Japan's oldest concrete electric pole



Concrete electric poles are a common sight today, but this pole is Japan's oldest, constructed in 1923. Hakodate, one of the first ports in Japan to open its doors to foreign trade, has many "oldests and firsts" in Japan.

Aomori



Niboshi Ramen and Yakiboshi Ramen

Aomori ramen is known for its soy sauce-based soup made with stock from *niboshi* (boiled and dried small sardines) or *yakiboshi* (broiled and dried small sardines), and thin noodles. Since *yakiboshi* was readily available in markets immediately after World War II, when Japan faced a food shortage, many affordable restaurants and food stalls offered ramen cooked with stock from *yakiboshi*. This has made the dish widely popular with locals and it is still loved by people of all ages. Over the years, Niboshi Ramen and Yakiboshi Ramen have slowly but surely evolved and numerous variations have been created – tastes you can enjoy only in Aomori.

Aomori Ramen Association
Website: <http://aomori-ramen.com/shop/list> (Japanese)
Tsugaru Ramen Niboshi Kai
Website: <http://niboshikai.com> (Japanese)



Kai-yaki Miso

A miso-flavored dish highlighting the great taste of shellfish

Nokke-don

Nokke-don is a DIY dish. First, you buy a set of meal tickets and swap a ticket for a bowl of rice, and then go around the market to choose your favorite toppings from the range of fresh seafood offered by about 30 shops there.

Inquiries: Aomori Fresh Fish and Vegetable Center
Phone: +81-17-763-0085 (No English-speaking staff available)
Furukawa Market Website: <https://nokkedon.jp> (English-, simplified Chinese- and Korean-speaking staff available)



Shirakami fish

The Sea of Japan in Aomori Prefecture (Tsugaru West Coast), which is nourished by the mineral-rich river water flowing down from the beech forests in Shirakami-Sanchi, a UNESCO World Heritage Site, is a good fishing ground with a wide variety of seafood. The fish and shellfish caught in this rich sea are sent directly to Hirosaki, and 18 restaurants serving sushi and other Japanese, French, ethnic and other kinds of cuisine in the city and its suburbs rely on this fresh fish to create their special dishes. In 2019, mahi-mahi, stonefish, black scraper, flying fish and other rare fish as well as gold ayu, that were raised in the limpid stream from Shirakami-Sanchi as well as Japanese huchen and other expensive fish were served.

Inquiries: Shirakami Fish Promotion Committee (inside the Tekuteku Editorial Department)
Phone: +81-172-31-2136 (No English-speaking staff available)
Shirakami-no-Sakana Website: <http://shirakaminosakana.com> (Japanese)

Hirosaki

Hirosaki Igamenchi

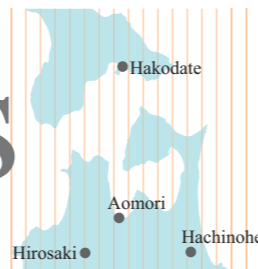
Igamenchi is deep-fired or fried dish made of chopped squid tentacles, seasonal vegetables and flour. It is a home-cooked dish embracing the wisdom and love of Tsugaru Hirosaki's people to use all ingredients without wasting anything.



Apple pies are sold at about 40 shops in Hirosaki, which boasts the largest apple production in Aomori Prefecture, famous for apples.

Recommended Dishes

Aomori Hirosaki Hachinohe Hakodate



Delicacies that cannot be enjoyed elsewhere

Dishes that can be relished only in the Hirosaki area

Savor local dishes, suited to the local climate, that are treasured by locals.

Hachinohe



Hachinohe Senbei-jiru

Hachinohe Senbei-jiru (Hachinohe cracker soup) is a representative local dish that has been enjoyed since the latter half of the Edo period (1603-1868). It features cracked Nanbu Senbei crackers made exclusively for soup dishes (called Otsuyu Senbei) that are stewed in broth made from various ingredients, such as meat, fish and vegetables. The crackers that have soaked up the flavorful soup have a unique, chewy texture. The soup is made basically from chicken broth and soy sauce, but there are a number of variations of ingredient combinations, such as fish broth and salt, and horse meat and miso.

Inquiries: VISIT HACHINOHE (general incorporated foundation)
Phone: +81-178-70-1110 (English-speaking staff available)
Hachinohe Senbeijiru Laboratory Website:
<http://senbei-jiru.com> (Japanese)



Kaisen-don dishes

The Kaisen-don, a bowl of rice topped with various fresh seafood, is a staple culinary delight in Hakodate. Its deliciousness comes from the fact that various fishes are landed year-round in Hakodate, a city surrounded by rich fishing grounds where the warm currents in the Sea of Japan and the cold currents in the Pacific Ocean converge. Abundant bounties of the sea that are unique to Hakodate include the translucent, firm-textured Japanese flying squid caught after the start of the open season in June; bluefin tuna from Toi, touted as the best in Japan thanks to an exsanguination process; and fatty Atka mackerel (Nebokke), which do not migrate in the open sea but rather stay on reefs. Shops in the Hakodate Morning Market, including those of the Donburi Yokocho Market, serve a variety of Kaisen-don dishes.

Inquiries: Hakodate Morning Market Cooperative Association
Phone: +81-120-858-313 (No English-speaking staff available)
Hakodate Morning Market Website: www.hakodate-asaihi.com (Japanese)

Hakodate



Iso Ramen

Iso Ramen features lightly seasoned soup, thin wavy noodles and generous amounts of seafood, such as sea urchin, shellfish and prawns.

Hachinohe-Maeoki Saba (Mackerel)

Hachinohe-Maeoki Saba refers to the mackerel that are caught in the waters just off or north of the Sanriku Coast and landed at Hachinohe port during a period determined by the Hachinohe-Maeoki Saba Brand Promotion Council in consideration of the fat content and weight of the fish. The waters off the Hachinohe Coast are the northernmost mackerel fishing area in Honshu, where a rapid drop in seawater temperature in autumn and abundant feed provide a perfect environment for mackerel to store high-quality fat. The mackerel caught in the waters off the Hachinohe coast during the period are said to be the fattiest mackerel in Japan.

Period: September – December
Inquiries: Hachinohe-Maeoki Saba Brand Promotion Council (inside the Hachinohe Chamber of Commerce and Industry)
Phone: +81-178-43-5111 (No English-speaking staff available)
Saba-No-Eki Website: www.hachinohe-sabanoeiki.com (Japanese)



Hakodate salt ramen

Hakodate salt ramen, characterized by a clear soup and simple taste, truly pleases your taste buds. It is known as one of the top three ramen in Hokkaido along with Sapporo's miso ramen and Asahikawa's soy sauce ramen. Currently, Hakodate has approximately 150 ramen restaurants, every one of which serves its own salt ramen. What is common to all of them is a clear soup based on a painstakingly made stock that produces a rich flavor that diners will never get tired.

Hakodate Official Travel Guide "Travel Hakodate" Website
<https://www.hakodate.travel/en>



Hakodate Baked Piroshki was developed in 2017 as a new local specialty that highlights the city's close relations with Russia. This bread is sold at 10 local bakeries.



Seikan Area

Multi-destination

Model Courses

Spring & Summer

Model course for a tour of your choice

Recommended spring & summer trip itinerary

Hachinohe

JR Hachinohe Station

Approx. 30 min. by conventional-line train



Umineko-go Sightseeing Bus, which makes a tour of scenic viewpoints along the Tanesashi Coast, is recommended!

JR Tanesashi-kaigan Station

On foot

Tanesashi Coast Information Center

Enjoy the scenic viewpoints along the coast from the bus window as you travel to the Tanesashi Coast Information Center. The spectacular view of the Tanesashi Natural Lawn that spreads out before your eyes is a must-see.

Address: Tanakubo 14-167, Oaza Same-machi, Hachinohe
Hours: 9:00 - 17:00 *Closed from December 29 to January 1
Inquiries (phone): +81-178-51-8500
(No English-speaking staff available)



Iso Ramen

At the Tanesashi Coast, Iso Ramen featuring the Sanriku seafood flavor is highly recommended. The dish features lightly seasoned, salt-based soup and thin wavy noodles topped with locally sourced seafood, such as sea urchin, sea vegetables, shellfish and prawns. The moment you take a bite, you will find a tangy ocean flavor fill your mouth.



On foot

JR Tanesashi-kaigan Station

Approx. 20 min. by conventional-line train

JR Hon-Hachinohe Station

Approx. 10 min. on foot

Hachinohe Portal Museum "Hacchi"

Hachinohe Portal Museum "Hacchi" offers a year-round opportunity to enjoy various attractions Hachinohe has to offer. It has galleries and exhibition booths featuring local food, nature and festivals, as well as morning markets and alleyways (yokocho) among other local resources. The shop there sells food and craft items.

Address: Mikka-machi 11-1, Hachinohe
Hours: 9:00 - 21:00 (December 30 and January 2 - 3; 10:00 - 18:00)
*Closed: Second Tuesday of each month (or Wednesday if Tuesday is a national holiday), December 31 and January 1
Inquiries (phone): +81-178-22-8228 (No English-speaking staff available)



Approx. 2 min. on foot

Gourmet tour to Miroku Yokocho (alleyway)

Eight traditional Japanese alleyways, known as yokocho, extend in the heart of Hachinohe, a city with a thriving yokocho culture. Each yokocho has its own distinctive atmosphere, but one of the charms common to them is the opportunity to communicate with people. Enjoy various dishes and conversations with people around you at Miroku Yokocho, which boasts 26 eateries and pubs.

Inquiries: VISIT HACHINOHE (general incorporated foundation)
Phone: +81-178-70-1110
(English-speaking staff available)



Stay in Hachinohe

Aomori

JR Shin-Aomori Station

Approx. 6 min. by conventional-line train



Chirin-Chirin Ice Cream, a delicious eye-pleasing treat that makes a short summer even more enjoyable

JR Aomori Station

Approx. 3 min. on foot

Seikan Ferry Memorial Ship Hakkoda-Mar

This is Japan's first railway ferry museum. Hakkoda-Mar, a ship that used to connect Hokkaido and Japan's main island of Honshu, is moored at the quay, and is open to the public. Inside the ship, the bridge, engine room and wagon deck remain preserved, and visitors can feel the atmosphere of days gone by.

Address: Yanagawa 1-112-15, Aomori
Hours: 9:00 - 19:00 (until 17:00 from November to March)
Phone: +81-17-735-8150 (No English-speaking staff available)



Approx. 1 min. on foot

A - Factory

This is a commercial complex with a cider factory where cider is made exclusively of apples from Aomori. The factory is packed with gifts and souvenirs from various parts of the prefecture. Dining while seeing the bay area beyond the window is highly recommended.

Address: Yanagawa 1-4-2, Aomori
Hours: 9:00 - 20:00 *Hours differ depending on the shop.
Phone: +81-17-752-1890
(No English-speaking staff available)



Approx. 30 min. by city bus to the Sannai-Maruyama Iseki-mae stop

Sannai Maruyama Jomon Culture Center

The Sannai-Maruyama Site contains the remains of a large-scale village dating back to the Jomon period. It has been designated a national special historic site. In addition to volunteer-guided tours of highlights, visitors can enjoy the exhibits of artifacts unearthed at the site and various hands-on experience programs, including those to make small clay figures and curved bead (Magatama) accessories.

Address: Sannai Maruyama 305, Aomori
Hours: 9:00 - 17:00 (until 18:00 between June and September)
*Closed: Fourth Monday of each month (or the following day if Monday is a national holiday), December 30 - January 1
Admission: Adults: 410 yen; high school/university students: 200 yen; junior high school students and younger: free *Additional fees are necessary for special exhibitions and hands-on programs.
Inquiries (phone): +81-17-766-8282 (No English-speaking staff available)



Approx. 30 min. by city bus to the Aomori Eki-mae stop

Sushi in Aomori

Surrounded by the sea on three sides, namely the Sea of Japan, Mutsu Bay and the Pacific Ocean, Aomori abounds in fresh seafood. Savor delicious sushi topped with fresh seasonal fish and shellfish, using fixed-price sushi coupons that can be used at sushi restaurants in Aomori.

Inquiries: Aomori Chamber of Commerce and Industry
Phone: +81-17-734-1311 (No English-speaking staff available)
Website: <http://www.acci.or.jp/sushi2/index.html>



Stay in Aomori

Hirosaki

JR Shin-Aomori Station

Approx. 40 min. by conventional-line train



It would be fun to make a tour of sweetshops to sample various apple pies in Hirosaki, a major apple-producing region.

JR Hirosaki Station

Taxi

Tour of plush Western-style buildings combined with Hirosaki French cuisine

There are many Western-style buildings dotted around Hirosaki, including those evocative of the Meiji era (1868-1912) and Taisho era (1912-1926), when Japan embraced Westernization. Locals have also been open to Western culture, and the city is said to have more French restaurants per capita than any other city in Japan. In a taxi tour of plush Western-style buildings with Hirosaki French cuisine, you will enjoy a Hirosaki French course featuring locally sourced fresh ingredients after strolling through Western-style buildings.



Inquiries: Tsugaru Machi-Aruki Tourism Promotion Executive Committee
(inside the Hirosaki Tourism and Convention Bureau)
Phone: +81-172-35-3131
(English-speaking staff available)
Hirosaki Machi-Aruki Website:
<http://machi-aruki.sakura.ne.jp/>



On foot or by taxi

Guided tour using smartglasses

Using the latest (smartglass) digital technology, this guided tour allows visitors to enjoy 360-degree panoramic views and the history of Hirosaki Castle.

Address: Departure: Fujita Memorial Japanese Garden
Arrival: Butokuden Lounge (Kita-no-Kuruwa) in Hirosaki Park
Hours: from 10:30 and 14:00 *All year round
Time required: Approx. 70 min.
Fee: 1,000 yen/person (from junior high school students and older)
Supported languages: Japanese, English, Chinese, Korean, Thai, French
Inquiries: Hirosaki Green Association
Fujita Memorial Japanese Garden Office
Phone: +81-172-37-5525 (No English-speaking staff available)



Approx. 15 min. on foot

Alley walking at dusk

A 90-minute program to explore back-alleys at dusk is available to people who want to know more of Hirosaki. It may make you feel as if playing detective. (Reservations required three days in advance)

Inquiries: Tsugaru Machi-Aruki Tourism Promotion Executive Committee
(inside the Hirosaki Tourism and Convention Bureau)
Phone: +81-172-35-3131 (English-speaking staff available)
Hirosaki Machi-Aruki Website:
<http://machi-aruki.sakura.ne.jp/>



Stay in Hirosaki

Hakodate

JR Shin-Hakodate-Hokuto Station

Approx. 15 min. by Shinkansen-access train

Hakodate Haikara-go, a vintage streetcar perfect for exploring the city



JR Hakodate Station

Approx. 1 min. on foot

Hakodate Morning Market & Kaisen-don dishes

Surrounded by the sea on three sides with fertile fishing grounds, Hakodate boasts its fresh bounties of the sea above all else. Shops in the Hakodate Morning Market, just a minute-walk from JR Hakodate Station, always offer Kaisen-don dishes featuring generous amounts of fresh seasonal seafood confidently selected by the shop owners.

Inquiries: Hakodate Morning Market Cooperative Association
Phone: +81-120-858-313 (No English-speaking staff available)
Website: www.hakodate-asaichi.com



Walking tour of sights steeped in the romance of history

A time-honored city, Hakodate has many sights you will find fascinating during walking tours. These include churches with an international air, old Japanese-style houses on the slopes renovated into cafés, and traces of Toshizo Hijikata and other patriots in the closing days of the Tokugawa Shogunate. Walking tours will enable you to learn more about the appeals of Hakodate. Also check the Hakodate Machiaruki Maps (26 walking routes).

Inquiries: Tourism Promotion Section, Tourism Department, City of Hakodate
Phone: +81-138-21-3323
(No English-speaking staff available)



Hakodate sweets

One of the first ports in Japan to open its doors to foreign trade, Hakodate has a long tradition of Western confectionery making, with the history of local bakeries and sweet shops dating back as far as the Meiji era. Since the city has a large number of sweet shops, it's easy to take a breather from your tour and drop by a sweet shop to enjoy delicious sweets.

Inquiries: Hakodate Sweets Promotion Association
Phone: +81-138-77-7491 (No English-speaking staff available)
Website: www.hakodate-sweets.com



If you take Mt. Hakodate Ropeway, approx. 10 min. on foot from the Jujigai tram stop to the Ropeway's Sanroku Station, and then approx. 3 min. by ropeway to the summit.

Night view from Mt. Hakodate

The night view of the unique terrain and the lights of the city is highly acclaimed and create a miraculous night view. Don't miss the chance to watch a fantastic night view enveloped by a sea fog in early summer or a panoramic cityscape illuminated by the sunset glow that gradually fades into night.

Hours: 10:00 - 22:00 (until 21:00 in winter)
Inquiries: Mt. Hakodate Ropeway Corp.
Phone: +81-138-23-3105 (General Information)
(No English-speaking staff available)



Stay in Hakodate

Seikan Area Multi-destination Model Courses

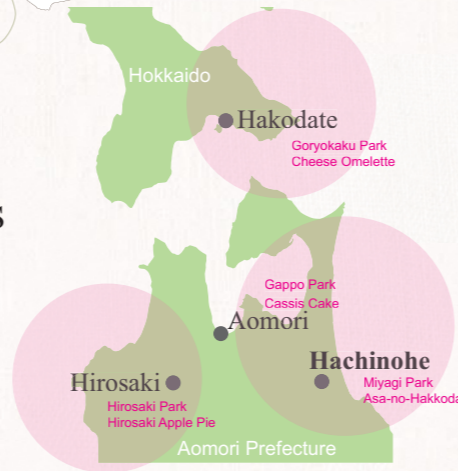
Spring

Model course
for a tour of your choice

Tour of cherry blossoms and sweets

A spring tour featuring pink blooms and delicious sweets

The blooming of the Seikan area's cherry blossoms reaches its peak from late April to early May. Blooms in the variety of cherry blossom viewing spots in this area please the eyes of many. It's fun to savor unique local sweets while enjoying lovely cherry blossoms that spread before your eyes. Treat yourself to the beautiful spring blooms and delicious sweets in the Seikan area.



Hachinohe

JR Hachinohe Station
Approx. 10 min. by conventional-line train

JR Hon-Hachinohe Station
Approx. 10 min. on foot

Miyagi Park
Best viewing time:
late April – early May



Miyagi Park, located at the ruins of Hachinohe Castle, forms a valuable oasis in the city center, along with the public square (Shimin Hiroba) in front of the city hall, Hachinohe City Public Hall and Miyagi Shrine. It is also a popular cherry blossom viewing spot.

Address: Uchimarui 1-14-49, Hachinohe
Inquiries: Parks and Green Spaces Section, City of Hachinohe
Phone: +81-178-43-9141
(No English-speaking staff available)

Approx. 5 min. on foot

Asa-no-Hakkoda (Morning Hakkoda)



This smooth cheesecake, inspired by the morning scenery of the Hakkoda Mountains, has a strong cheese flavor and rich taste, but is also fluffy and melts in your mouth.

Address: Basement floor of Nakago Miharuaya Department Store, Oaza Jusannichi-machi 13, Hachinohe
Hours: 10:00 – 20:00
Inquiries: Arpaizon Co., Ltd.
Phone: +81-178-20-5822
(No English-speaking staff available)

Stay in Hachinohe

Aomori

JR Shin-Aomori Station
Approx. 5 min. by conventional-line train

JR Aomori Station
Approx. 20 min. by bus to the Gappo Koen-mae stop, and then approx. 1 min. on foot

Gappo Park
Best viewing time:
late April – early May



This park is a popular cherry blossom viewing spot with more than 600 cherry trees. When they are in full bloom, the Aomori Spring Festival is held with many stalls and paper lanterns illuminating the cherry blossoms at night.

Address: Gappo 2-16-9, Aomori
Inquiries: Park Maintenance Aoi-mori Group
Phone: +81-17-741-6634
(No English-speaking staff available)

Approx. 20 min. by bus to the Aomori Eki-mae stop

JR Aomori Station

Approx. 7 min. on foot

Cassis Cake



This cake features cassis fruit from Aomori, where most of the cassis in Japan is produced. It is popular for its fine harmony of sourness and sweetness.

Address: Shinmachi 1-13-21, Aomori
Hours: 10:00 – 18:30
Inquiries: Viennese Sweets Strauss
Phone: +81-17-722-1661
(No English-speaking staff available)

Stay in Aomori

Hirosaki

JR Shin-Aomori Station
Approx. 40 min. by conventional-line train

JR Hirosaki Station
Approx. 20 min. on foot

Hirosaki Park
Best viewing time:
late April – early May



The blooms of approximately 2,600 cherry trees in 52 varieties, including Yoshino cherry, weeping cherry and double-petaled cherry, turn the park a lovely pink. As beautiful as full-blown cherry blossoms are, fallen pink petals covering the water surface of the moat are also a breathtaking sight.

Address: Shimo-shirogane-cho 1, Hirosaki
Inquiries: Hirosaki Municipal Tourist Center
Phone: +81-172-37-5501
(English-speaking staff available)

Approx. 10–15 min. on foot to the city center

Hirosaki Apple Pie



Hirosaki boasts the largest apple production in Aomori Prefecture, which is known for its apples. In "the city of apples," you can find apple pies everywhere, such as at sweet shops, hotels and cafés as well as at bakeries and even Japanese-style confectionery stores.

Locations: In Hirosaki
Inquiries: Hirosaki Municipal Tourist Center
Phone: +81-172-37-5501
(English-speaking staff available)

Stay in Hirosaki

Hakodate

JR Shin-Hakodate-Hokuto Station
Approx. 15 min. by Shinkansen-access train

JR Hakodate Station
Approx. 16 min. by tram to the Goryokaku Koen-mae stop, and then approx. 15 min. on foot

Goryokaku Park
Best viewing time:
late April – early May



The Goryokaku Fort, a Special Historic Site of Japan and the site of the Battle of Hakodate, has approximately 1,600 cherry trees. At the height of the bloom, the cherry blossoms paint the star-shaped fort a lovely pink, creating a truly spectacular sight.

Address: Goryokaku-cho 44, Hakodate
Hours: 24 hours a day, 365 days a year
The fort: 5:00 – 19:00 (until 18:00 from November to March)
Inquiries: Flower and Green Division, Hakodate Housing and City Facilities Public Corporation
Phone: +81-138-40-3605
(No English-speaking staff available)

Approx. 21 min. by tram to the Jujigai stop, and then approx. 5 min. on foot

Cheese Omelette



Cheese Omelette is not actually an omelette, but a soufflé cheesecake with a fluffy, melt-in-the-mouth texture that includes generous amounts of locally sourced fresh ingredients.

Address: Suehiro-cho 13-9, Hakodate
Hours: 9:30 – 19:00 (vary with the season)
Inquiries: Pastry Staff's (inside Kanemori Yobutsukan)
Phone: +81-138-27-1240
(No English-speaking staff available)

Stay in Hakodate

Seikan Area Multi-destination Model Courses

Summer

Model course
for a tour of your choice

Tour of summer festivals and local sights

A decadent tour that will make your heart leap. Recharge your batteries in vibrant communities.

A variety of traditional local festivals add excitement to the summer of the Seikan area. They offer an opportunity to come in contact with locals and learn about their communities. In addition to festival venues, this multi-destination tour will also take you to hot spring resorts and power spots that have been nurtured by the local climate, where you can learn about local history, communities and the spirit of local residents.



Hachinohe

JR Hachinohe Station
Approx. 10 min. by conventional-line train

JR Hon-Hachinohe Station
Approx. 20 min. by bus

Korekawa Archaeological Institution (Hachinohe Buried Cultural Properties Center)



The exhibition of artifacts unearthed at the Korekawa site and the Kazahari 1 site showcases Jomon culture in Hachinohe. A clay figurine with clasping hands (Gassyo Dogu), a designated national treasure, gives insight into the beauty of the culture and the spiritual world of that time.

Address: Aza Yokoyama 1, Oaza Korekawa, Hachinohe
Hours: 9:00 – 17:00 (last entry: 16:30)
*Closed: Mondays, the day after national/substitute holidays, and year-end and New Year holidays
Inquiries (phone): +81-178-38-9511
(No English-speaking staff available)

Approx. 20 min. by bus to the Hachinohe Chushingai Terminal stop

Hachinohe Sansha Taisai Festival
July 31 – August 4



Inscribed on the UNESCO Intangible Cultural Heritage list, this festival is the largest of its kind in Hachinohe and also has a history and tradition spanning some 300 years. The parades of 27 gorgeously decorated floats are so riveting and exquisite that they enthrall spectators. Outside the festival period, exhibits on the Sansha Taisai Festival can be seen on the first floor of Yutori next to Hachinohe Station all year round.

Venue: Downtown Hachinohe City
Inquiries: VISIT HACHINOHE (general incorporated foundation)
Phone: +81-178-70-1110
(English-speaking staff available)

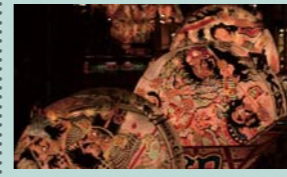
Stay in Hachinohe

Hirosaki

JR Shin-Aomori Station
Approx. 40 min. by conventional-line train

JR Hirosaki Station
Approx. 20 min. on foot

Hirosaki Neputa Festival
August 1 – 7



The Hirosaki Neputa Festival is characterized by fan-shaped neputa floats of various sizes depicting gallant warriors. The floats parade through the streets – starting with small ones and ending with some up to nine meters high – accompanied by musicians playing flute and Japanese drum. Also popular with tourists is the Tsugaru-han Neputa Village, which offers a year-round opportunity to experience the sights and sounds of the Hirosaki Neputa Festival.

Dates and times:
August 1 – 4: Dotemachi Course, from 19:00
August 5 – 6: Ekimae Course, from 19:00
August 7: Dotemachi Nanukabi Course, from 10:00
Inquiries: Hirosaki Municipal Tourist Center
Phone: +81-172-37-5501 (English-speaking staff available)

Approx. 45 min. by bus from JR Hirosaki Station

Hyakuzawa Onsen



This hot spring resort is popular for its iron-containing reddish hot spring water called "Netsu no Yu (the water of heat)." It is also characterized by slightly differing hot spring components among the hotels and inns here because abundant spring water allows them to draw fresh hot water directly from their respectively in-house source.

Address: Hyakuzawa, Hirosaki
Inquiries: Iwakisan Tourist Association
Phone: +81-172-83-3000 (No English-speaking staff available)

Stay in Hirosaki

Aomori

JR Shin-Aomori Station
Approx. 6 min. by conventional-line train

JR Aomori Station
Approx. 20 min. by Aomori Railway train or approx. 50 min. by bus

Asamushi Onsen



Tracing its roots back 1,200 years, Asamushi Onsen has been a spa resort frequented by hosts of intellectuals, including Shiko Munakata and Osamu Dazai. Featuring various facilities, including a bathing beach, a marine fishing park and an aquarium, the resort attracts visitors from all walks of life.

Address: Oaza Asamushi, Aomori
Inquiries: Asamushi Onsen Tourist Association
Phone: +81-17-752-3250
(No English-speaking staff available)

Approx. 20 min. by Aomori Railway train or approx. 50 min. by bus

JR Aomori Station

Approx. 8 min. on foot

Aomori Nebuta Festival
August 2 – 7



Aomori Nebuta Festival is one of the major fire festivals in Japan and attracts approximately three million visitors every year. A total of 22 large Nebuta floats parade through the streets, adding excitement to the summer of the northern region.

Venue: Downtown Aomori City
Inquiries: Aomori Tourism and Convention Association
Phone: +81-17-723-7211
(No English-speaking staff available)

Stay in Aomori

Hakodate

JR Shin-Hakodate-Hokuto Station
Approx. 15 min. by Shinkansen-access train

JR Hakodate Station
Approx. 5 min. on foot *Up to the fireworks display venue

Hakodate Port Festival
August 1 – 5

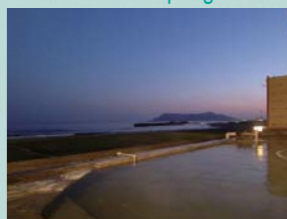


This is the largest summer event in Hakodate. One of the largest fireworks displays in southern Hokkaido is held on the first day, and approximately 20,000 people parade through the streets in the Wasshoi Hakodate Parade held on August 2 and 3.

Venues: Hakodate Port, Hakodate Station area, Goryokaku area
Inquiries: Hakodate Port Festival Executive Committee Secretariat (Inside the Hakodate International Tourism and Convention Association)
Phone: +81-138-27-3535
(No English-speaking staff available)

Approx. 30 min. by tram to the Yunokawa Onsen stop

Yunokawa Hot Spring Resort



From summer to autumn, when squid fishing is at its peak, oceanfront rooms offer views of lamps on squid-fishing boats faintly lightening up the dark sea and sky.

Address: Yunokawa-cho, Hakodate
Inquiries: Hakodate Yunokawa Hot Springs Ryokan Cooperative
Phone: +81-138-57-8988
(No English-speaking staff available)

Stay in Hakodate



Seikan Area

Multi-destination

Model Courses

Winter

Model course for a tour of your choice

Tour of winter festivals and northern warmth

Hakodate

JR Shin-Hakodate-Hokuto Station

Approx. 15 min. by access train

JR Hakodate Station

Approx. 1 min. on foot

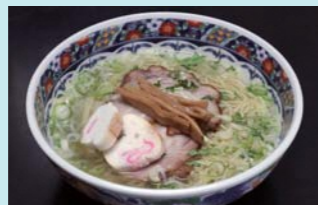
The soothing sight of monkeys relaxing in a hot spring at Saruyama Onsen is not to be missed.



Hakodate salt ramen

Hakodate salt ramen is one of the dishes representative of Hakodate. The clear soup based on a painstakingly made stock is characterized by a simple yet rich, uniquely flavorful taste. The salt ramen in the photo is offered by Hakodate Menchubo Ajisai restaurant chain, which has a JR Hakodate Station shop located on the second floor of the station building.

Hakodate Official Travel Guide "Travel Hakodate" Website
<https://www.hakodate.travel/en>



Approx. 30 min. by tram to the Yunokawa Onsen stop

A warm walk in Yunokawa

Yunokawa Hot Spring Resort has a lot to offer, including a hot spring foot bath (an easy way to enjoy a hot spring), the nearly 400-year-old Yukura Shrine, and the Tropical Botanical Garden, which has 300 varieties of tropical plants and is where the monkeys bathe.

Inquiries: Tourism Promotion Section, Tourism Department, City of Hakodate
Phone: +81-138-21-3323
(No English-speaking staff available)



Approx. 20 min. by tram to the Goryokaku Koen-mae stop

Goryo Hoshi-no-Yume event

The star-shaped moat of Goryokaku will be decorated with approximately 2,000 lights to form a five-pointed star that appears to rise above the ground. You can see that fantastic star from the observatory of the neighboring Goryokaku Tower.

Period: December 1 – February 28
Address: Goryokaku-cho 44, Hakodate
Inquiries: Goryokaku Tower Co., Ltd.
Phone: +81-138-51-4785
(No English-speaking staff available)



Approx. 30 min. by tram to the Suehiro-cho stop

Hakodate Illumination event

During the Hakodate Illumination event, streets filled with an international air in the city's Western area at the foot of Mt. Hakodate are enveloped by soft lights. Along with churches and other historic buildings that are also decorated with lights, they create a fantastic atmosphere perfect for a nighttime walk.

Period: December 1 – February 28
Locations: Motomachi and other areas in Hakodate
Inquiries: Hakodate Winter Festival Executive Committee (inside the Hakodate International Tourism and Convention Association)
Phone: +81-138-27-3535 (No English-speaking staff available)



Stay in Hakodate

Aomori

JR Shin-Aomori Station

Approx. 6 min. by conventional-line train

JR Aomori Station

Approx. 80 min. by JR Bus to the Ropeway Eki-mae stop

Jappa-jiru, a soup cooked using codfish ara (parts of fish left after filleting), radish and other ingredients, is a great winter warmer.



Hakkoda snowshoe trekking

Starting from the Hakkoda Ropeway Summit Park Station, you can trek with snowshoes while taking in the views of the soft rime. In the company of a guide, you can enjoy safe snowshoe trekking.

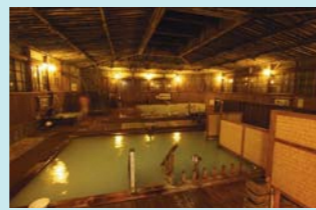
Address: Aza Kansuzawa 1-12, Oaza Arakawa, Aomori
Inquiries: Hakkoda Ropeway
Phone: +81-17-738-0343
(No English-speaking staff available)



Approx. 15 min. by JR Bus to the Sukayu Onsen stop

Sukayu Onsen Ryokan

Tracing its roots back more than 300 years, this mountain hot spring inn is known for its "bath for a thousand bathers" made completely of Japanese cypress and equivalent in size to 160 tatami mats. Bathers can enjoy four types of water: hot water, cold water, Shibu-rokubu water, and a hot water cascade.



Onimen-an Restaurant at Sukayu Onsen Ryokan Ginger Miso Oden

The origin of Ginger Miso Oden dates back to a food stall where the female owner added ground ginger to miso to help warm passengers on the Seikan Ferry to Hokkaido in the severe cold. It was a real hit that has spread and become part of the local culinary culture.

Address: Minami-Arakawayama Kokuyurin Sukayuzawa 50, Arakawa, Aomori
Hours: - Sukayu Onsen Ryokan: 7:00 – 17:30 (non-staying guests)
- Onimen-an: 10:30 – 16:30
Inquiries: Sukayu Onsen Ryokan
Phone: +81-17-738-6400 (No English-speaking staff available)



Approx. 1 hr. 40 min. by JR Bus to the Aomori Eki stop, and then approx. 1 min. on foot

Aomori Pageant of Light and Paper

"Yukidarumaaru," Japanese-paper objects that are handmade by locals using the Nebuta technique, illuminate the area around Aomori Station with warm and colorful lights.

Period: late November – early February
Venue: around Aomori Station
Inquiries: Aomori Minato Club (NPO organization) (inside the Seikan Ferry Memorial Ship "Hakkoda-Man")
Phone: +81-17-735-8150
(No English-speaking staff available)



Stay in Aomori

Hirosaki

JR Shin-Aomori Station

Approx. 40 min. by conventional-line train

JR Hirosaki Station

Approx. 30 min. by complimentary shuttle bus

Candied sweet potatoes that are sold at the Hirosaki Central Food Market exclusively in autumn and winter (from around September to April) are popular with locals and are truly to die for.



Asobe-no-Mori Iwakiso Day spa & lunch

This hotel is popular for its beautiful views of nature, which include the Shirakami-Sanchi UNESCO World Heritage Site as well as Mount Iwaki and the Hakkoda Mountains, both included in the top 100 mountains in Japan, and for its hot spring bath options.

Address: Aza Terasawa 28-29, Oaza Hyakuzawa, Hirosaki
Inquiries: Asobe-no-Mori Iwakiso
Phone: +81-172-83-2215
(No English-speaking staff available)



Approx. 30 min. by complimentary shuttle bus to the Hirosaki Municipal Tourist Center bus terminus

Kawasaki Dye Works Experience Tsugaru natural indigo dyeing

This works was originally a dye house operating in the Edo period (1603-1868) and it was reconstructed after dyeing tools from those days were found in 1992. Today, it offers hands-on natural indigo dyeing workshops and sells small indigo-dyed items.

Address: Kamenoko-machi 63, Hirosaki
Hours: 9:00 – 17:00 (9:00 – 16:00 in winter), Closed on Thursdays
Inquiries: Kawasaki Dye Works
Phone: +81-172-35-6552
(No English-speaking staff available)



Approx. 10 min. on foot

Dressing in Japanese feudal lord & princess costumes

Visitors can get dressed in feudal lord and princess costumes and have their photos taken.

Address: Hirosaki Park Butokuden Lounge (Kita-no-Kuruwa)
Hours: 9:00 – 16:30
*The hours are flexible for large groups; please feel free to ask.
Fees: Armor / woman's bridal robe: 1,010 yen
Tabard (jinbaori) / feudal lord kimono / woman's kimono with long sleeves / children's kimono (boy/girl): 500 yen
Inquiries: Hirosaki City Green Association
Phone: +81-172-33-8733
(No English-speaking staff available)



On foot or by taxi

Shirakami fish

The Sea of Japan in Aomori Prefecture (Tsugaru West Coast) has mineral-rich water flowing down from beech forests in Shirakami-Sanchi, a UNESCO World Heritage Site. A variety of seafood caught here are sent directly to Hirosaki, where visitors can enjoy special seafood dishes at restaurants serving sushi and other Japanese, French, ethnic and other kinds of cuisine.

Inquiries: Shirakami Fish Promotion Committee (inside the Tekuteku Editorial Department)
Phone: +81-172-31-2136
(No English-speaking staff available)
Shirakami-no-Sakana
Website: <http://shirakaminosakana.com> (Japanese)



Stay in Hirosaki

Hachinohe

JR Hachinohe Station

Approx. 10 min. by conventional train line

JR Hon-Hachinohe Station

Approx. 10 min. on foot

Visitors can put on the costume of Tayu dancers with the Enburi costume dressing experience service. (Hachinohe Portal Museum "Hacchi")



Sake brewery tour

At this brewery in Hachinohe, sake is brewed with the technique of the Nanbu Toji, one of the top three guilds of brewers in Japan. Don't miss the chance to sample their brews and find your favorite sake.

Address: Yokamachi 1, Hachinohe
Tour hours: 9:00 – 16:00
Inquiries: Hachinohe Shurui Co., Ltd.
Phone: +81-178-43-0010
(No English-speaking staff available)



Approx. 10 min. on foot

Hachinohe Senbei-jiru

Hachinohe Senbei-jiru (Hachinohe cracker soup) is a local dish featuring Nanbu Senbei crackers made exclusively for soup dishes (called Otsuyu Senbei) that are stewed in a strong flavored broth. The crackers that have soaked up the flavorful soup and become chewy are to die for.

Inquiries: VISIT HACHINOHE (general incorporated foundation)
Phone: +81-178-70-1110
(English-speaking staff available)
Hachinohe Senbeijiru Laboratory
Website: <http://senbei-jiru.com> (Japanese)



Approx. 10 min. on foot

Hachinohe Enburi Festival

Hachinohe Enburi is a local dance performance designated a national important intangible folk cultural property. More than 30 groups of dancers put on soul-stirring performances in various parts of the city.

Period: February 17 – 20 (At other times, video footage of the festival is shown at the Hachinohe Portal Museum "Hacchi.")
Venues: Downtown Hachinohe, Shimin Hiroba in front of the Hachinohe City Hall, Kojokaku, etc.
Inquiries: VISIT HACHINOHE (general incorporated foundation)
Phone: +81-178-70-1110 (English-speaking staff available)



Approx. 15 min. by city bus or Nanbu Bus to the Grand Sunpia Hachinohe stop

Sawasato-no-Yu Spa at Grand Sunpia Hachinohe

The natural hot spring gushing out on the hotel premises promotes recovery from fatigue and has high moisturizing effects. The spa has eight types of bath, helping warm both the body and mind of bathers.

Address: Higashi-Hakusandai 1-1-1, Hachinohe
Hours: 10:00 – 22:00 (non-staying guests)
Inquiries: Grand Sunpia Hachinohe
Phone: +81-178-23-5151
(No English-speaking staff available)



Stay in Hachinohe

Calendar of Events, Flowers and Landscapes

★: Event
◆: Flower/landscape

	Aomori	Hirosaki	Hachinohe	Hakodate
April	★ Aomori Spring Festival ★ Aomori Marathon ◆ Dog-tooth violet (April, Yunoshima Island near Asamushi Onsen) ◆ Cherry blossom (late Apr. – early May)	★ Hirosaki Cherry Blossom Festival ◆ Cherry blossom (mid-Apr. – early May)	★ Tatehana Ganpeki Asaichi (Tatehana Wharf Morning Market, late March – December) ◆ Cherry blossom (late Apr., Miyagi Park)	★ Bar-Gai in Western Hakodate ◆ Cherry blossom (late Apr. – early May, Goryokaku/Hakodate Park)
May	★ Aomori Spring Festival ★ Namioka Apple Blossom Festival ◆ Apple blossom (early May)	★ Apple Blossom Festival ★ Cidre Night ◆ Apple blossom (early – mid-May) ★ Festival eve (Yoimiya/Yomiya, late May – early October)	★ Hachinohe Umineko National Marathon ◆ Rape blossom (May – Jun., Kabushima)	★ Hakodate Goryokaku Festival ◆ Wisteria (late May – Jun., Goryokaku)
June	★ East Hakkoda Azalea Festival ◆ Azalea (early – mid-Jun., east Hakkoda)	★ Firework Festival in the Historic City of Hirosaki	★ Shimamori Spring Festival ◆ Daylily (Jun. – Aug., Tanesashi Coast) ◆ Sukashi-yuri lily (<i>Lilium maculatum</i> Thunb., Jun. – Aug., Tanesashi Coast)	★ Minami-Kayabe Hirome Boat Festival ◆ Hydrangea (late Jun. – early Sep., Shimin-no-Mori Park near the Trappistine Convent) ◆ Rose (late Jun. – early Jul., Old British Consulate)
July		◆ Apple picking experience (Aug. 1 – mid-Nov.)	★ Hachinohe Tanabata Festival	★ Hakodate Marathon ★ Hakodate Yagaigeki (Outdoor Play) ★ Hakodate Port Fireworks Display
August	★ Asamushi Onsen Fireworks Display ★ Aomori Nebuta Festival ★ Namioka Kitabatake Festival ◆ Apple picking experience (Aug. – Nov.)	★ Hirosaki Neputa Festival	★ Hachinohe Sansha Taisai Festival ★ Hachinohe Fireworks Display	★ Hakodate Port Festival ★ World Music and Dance Festival in Hakodate ★ International Science Festival in Hakodate ★ Yunokawa Hot Spring Resort Fireworks Display
September	◆ Autumn leaves (late Sep. – Oct.)	★ Oyama Sankei (Aug. 1 on the lunar calendar)	◆ Nippon daisy (Sep. – Oct., Tanesashi Coast)	★ Hakodate Gourmet Circus ★ Bar-Gai in Western Hakodate
October	★ Utou-no-Hama Yabusame (mounted archery) Competition	★ Hirosaki Shirakami Apple Marathon ★ Hirosaki Castle Chrysanthemum and Autumn Foliage Festival ◆ Autumn leaves (late Oct. – early Nov.)	◆ Apple picking experience (early Oct. – mid-Nov.) ★ Nejo Castle Historical Site Festival ★ Nango New Soba Festival ★ Roofed boat cruising on Lake Aoba ◆ Autumn colors (late Oct. – early Nov., Nango)	★ Hakodate MOMI-G Festa ◆ Autumn leaves (late Oct. – mid-Nov., Kosetsuen Park)
November			★ Hachinohe Chrysanthemum Festival	
December	★ Aomori Pageant of Light and Paper ◆ Snow (Dec. – Mar.)	◆ Snow (Dec. – Mar.)	◆ Snow (late Dec. – early Mar.)	★ Hakodate Christmas Fantasy ★ Hakodate Illumination (– Feb.) ★ Goryo Hoshi-no-Yume (– Feb.) ◆ Snow (Dec. – early Mar.)
January	◆ Snow monsters on the Hakkoda Mountains (Jan. – Feb.)			★ Hakodate Harbor Illumination Film Festival
February	★ Aomori Snow Light Festival ★ Aomori Winter Festival	★ Hirosaki Castle Snow Lantern Festival ★ Sawada Candle Festival ★ Winter Sports Mt. Iwaki	★ Hachinohe Bouillabaisse Festa ★ Hachinohe Enburi Festival	★ Hakodate Food Festa
March	★ Hakkoda Walk			

Local Transportation Information

— Convenient transportation service packages

Call the contacts or see the websites for more information, including the sales periods/locations of passes and their validity periods/areas.

Aomori	Hirosaki
<p>Aomori City Bus Free Route Card (One-day pass valid on weekends and public holidays)</p> <p>The Aomori City Bus Free Route Card is a one-day pass that allows unlimited rides on regular routes in the city on weekends and public holidays.</p> <p>○ Adults: 500 yen, Children: 250 yen</p> <p>Inquiries: Management Section, Transportation Department, Enterprise Bureau, City of Aomori Phone: +81-17-726-5453 (No English-speaking staff available) Website: www.city.aomori.aomori.jp/koutsu/fyousyaken/bus-card.html</p> <p>Nebutan-go Aomori Shuttle Route Bus</p> <p>This shuttle bus stops at transportation hubs (e.g., Aomori Station and Shin-Aomori Station) and major tourist spots.</p> <p>○ Single-ride ticket: 300 yen (Elementary school students: 150 yen) ○ One-day pass for unlimited rides: 700 yen (Elementary school students: 350 yen) ○ Two-day pass for unlimited rides: 800 yen (Elementary school students: 400 yen) *Preschoolers: free</p> <p>Where to buy: Aboard the bus; Tourist Information Center, Aomori City (at Shin-Aomori Station); Tourist Information Center, Aomori City (in front of Aomori Station); and major tourist facilities and hotels in the city</p> <p>Inquiries: Aomori Kanko Bus Inc. Phone: +81-17-739-9384 (No English-speaking staff available) Website: www.aomori-kanko-bus.co.jp/topics.html</p>	<p>Tsugaru Free Pass</p> <p>The Tsugaru Free Pass allows unlimited rides on unreserved seats in ordinary cars on local trains/rapid trains on JR East, Konan Railway, and Tsugaru Railway and on regular-route Konan Bus (limited to designated sections) within the service area. It's ideal for taking in Tsugaru's attractions, hot springs and tourist facilities.</p> <p>*See the website for more information on the service area. Fares: Adults: 2,100 yen, Children (elementary school age): 1,050 yen</p> <p>Validity period: 2 consecutive days</p> <p>Where to buy: JR Ticket Offices (Midori-no-madoguchi) in the service area, in Akita Prefecture (excluding Higashi-Odate, Towadaminami, and Kazunohana stations), at Fukaura Station, and at Ajigasawa Station; stations installed with a reserved seat ticket machine; Travel Service Centers (View Plaza); and major travel agencies</p> <p>Inquiries: Tsugaru Free Pass Management Committee (9:00 – 17:00 *weekdays only) Phone: +81-172-40-7017 (No English-speaking staff available)</p> <p>Tsugaru Navi Website: http://tsugarunavi.jp/freepass/en/ (English-speaking staff available)</p> <p>100-yen Loop Bus</p> <p>This loop bus costs just 100 yen per ride—no matter where you get on and no matter how far you go.</p> <p>○ Fares: Adults: 100 yen, Children: 50 yen ○ Hours: April – November, 10:00 – 18:00 December – March: 10:00 – 17:00</p> <p>Inquiries: Hirosaki Bus Terminal Phone: +81-172-36-5061 (No English-speaking staff available) Website: www.konanbus.com/</p>
Hachinohe	Hakodate
<p>Machi Pass 300</p> <p>The Machi Pass 300 is a money-saving one-day pass that allows unlimited rides in the service area, including central Hachinohe. It's ideal for shopping, running errands and doing business in the city center.</p> <p>The pass is valid on city buses, Nanbu buses and Towada Kanko Dentetsu buses, and costs just 300 yen for adults and 150 yen for children.</p> <p>Inquiries: Transportation Department, City of Hachinohe Phone: +81-178-25-5141 (No English-speaking staff available)</p> <p>Inquiries: Northern Iwate Transportation Inc. Hachinohe Office Phone: +81-178-44-7111 (No English-speaking staff available)</p> <p>Inquiries: Towada Kanko Dentetsu Co., Ltd. Hachinohe Office Phone: +81-178-43-4520 (No English-speaking staff available)</p> <p>Tanesashi Coast Sightseeing Bus Umineko-go</p> <p>Using this bus, you can travel between Same Station near Kabushima Island, the gateway to the Tanesashi Coast of Sanriku Fukko (Reconstruction) National Park, and Tanesashi-kaigan Station for 100 yen. The bus stops at major sightseeing spots along the Tanesashi Coast, allowing passengers to enjoy beautiful scenery. If you also use the JR Hachinohe Line and try trekking, you can further enjoy the Tanesashi Coast.</p> <p>○ Fare: Adults: 100 yen; children: 50 yen ○ Operation: early April – mid-November (daily); mid-November – March (Saturdays, Sundays and national holidays) *Excluding year-end and New Year holidays</p>	<p>One-day Tram Pass One-day or Two-day Tram & Bus Pass</p> <p>Trams are convenient for seeing the sights in Hakodate. With the One-day Tram Pass, you can get on and off trams smoothly since all you have to do is show it to the driver. Passes for unlimited rides on both trams and buses (operated by Hakodate Bus) are also available for those who want to see more sights in the city. (See the website for the service area of Hakodate Bus, which is limited.)</p> <p>○ One-day Tram Pass: Adults: 600 yen, Children: 300 yen ○ One-day Tram & Bus Pass: Adults: 1,000 yen, Children: 500 yen Two-day Tram & Bus Pass: Adults: 1,700 yen, Children: 850 yen</p> <p>Inquiries: Project Promotion Section, Transportation Department, Enterprise Bureau, City of Aomori Phone: +81-138-32-1730 (No English-speaking staff available) Website: www.city.hakodate.hokkaido.jp/docs/2014012100977/</p> <p>Hakodate Travel Passport</p> <p>This pass provides unlimited rides on JR trains (unreserved seats in local train ordinary cars), Hakodate buses, Hakodate trams, and South Hokkaido Railway trains in Hakodate and its suburban areas (i.e., Kikonai, Hokuto, Nanae, Shikabe and Mori). One-day and two-day passes are available. Present your pass to receive a discount on Tsugaru Kaikyo Ferry fares.</p> <p>Inquiries: JR Hokkaido Telephone Information Center (Hours: 6:30 – 22:00) Phone: +81-11-222-7111 (No English-speaking staff available) JR Hokkaido Website: http://www.jrhokkaido.co.jp/</p>