

# Mt. Fuji West Side Story

Mt. Fuji  
West Side  
Story  
Passport



JAPAN Mt.FUJI

Get the passport,  
and the great journey to  
Mt.Fuji westside story begins





# Mt. Fuji West Side Story



**Anywhere you go, Mt. Fuji is in your sight.  
The “west road” continues for 22 miles.**

A straight road crosses through its great skirt at the west foot of Mt. Fuji. Anywhere on the road is the best spot for the splendid Mt. Fuji soaring before your eyes.

It is approximately 35 km, starting from “Fujisan Hongu Sengen-taisha Shrine” located in Fujinomiya City in Shizuoka Prefecture to “Lake Motosuko” and “Lake Shojiko” in Fujikawaguchiko Town in Yamanashi Prefecture passing a broad highland area spreading at 700~1000 m above sea level.

Westside provides an outstanding feeling of freedom. Also, at Westside, sacred Mt. Fuji allows us to play and have a great adventure freely and wildly.

The sacred mountain standing close at hand changes its face every moment. And there are mystical holy places and the world of water and forests which show a vitality of Mt. Fuji.

Westside has many more untouched charms. A story of Mt. Fuji with full of discovery and surprise is endless.



## CONTENTS

	<b>Story 1</b> A story of ever-changing Mt. Fuji Pearl Fuji / Osawa Kuzure / Kodaki Fuji	<b>2</b>
	<b>Story 2</b> A story of water Shiraito-no-Taki Waterfall / Lake Motosuko / Jimba-no-Taki Waterfall	<b>6</b>
	<b>Story 3</b> A story of forest Aokigahara Jukai / Tokai Nature Trail / Mt. Kenashi	<b>8</b>
	<b>THE GREAT JOURNEY</b> Mt. Fuji West Side Story Map	<b>10</b>
	<b>Story 4</b> A story of faith Fujisan Hongu Sengen-taisha Shrine / Hitoana Fujiko Ruins	<b>12</b>
	<b>Story 5</b> A story of borders Nakamichi Okan / Fuji no Makigari / Motosu Stone Mound	<b>13</b>
	<b>Story 6</b> A story of pioneer Asagiri Highland / Fujigane Highland	<b>14</b>
	List of facilities	<b>16</b>
	Excursion ticket Bus routes	<b>20</b>

### Journey to Mt. Fuji Westside Story begins





# A story of ever-changing Mt. Fuji



Mt. Fuji standing close at hand changes its face every moment and tells us a story of hundreds of thousands of years from its birth.

## Osawa Kuzure

There is a gouged slope on the west side of Mt. Fuji called "Osawa Kuzure." The powerful appearance can be viewed from a distance. The huge valley has reached around the fifth station starting from just below the summit, and it still continues falling little by little every day at present. The falling started more than a thousand years ago, and it is the evidence that Mt. Fuji is still growing.

**Fantastic Mt. Fuji through the morning mist. Mt. Fuji stretching arms in the sky and the green highland. The sun, the moon and stars that rise on the head of Mt. Fuji and travel around the sky. And, a history of violent eruptions engraved on the mountain....**

**If you slowly travel the road in Westside which runs across Shizuoka Prefecture and Yamanashi Prefecture, you will notice Mt. Fuji that seems a perfect cone-shape from a distance is in fact not the same shape any time, any days, or from any angle.**

**Even if not climbing to the summit, the breathing of the godly sacred mountain was near at hand. That was Mt. Fuji from Westside.**

## Diamond Fuji from Lake Tanukiko

"Lake Tanukiko" in Asagiri Highland is a nature-rich lake of approximately 3.3 km located at the west of Mt. Fuji. Having a sacred mountain in due east, it is known as the observation point for "Diamond Fuji" which represents Westside. The morning sun rising from the top of Mt. Fuji. This mystic natural phenomenon can only be seen for a week each around April 20 and August 20. It is popular as a spiritual place since there is a high chance of "Double Diamond Fuji" which the image of diamond Fuji reflected in the lake.



2



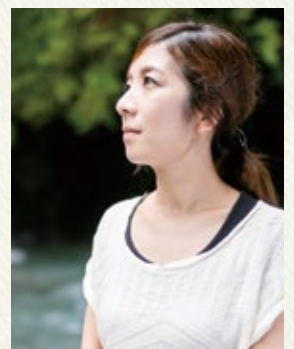
## Pearl Fuji

As opposed to the sun rising "Diamond Fuji", the phenomenon which nearly full moon rises on the top of Mt. Fuji is called "Pearl Fuji". At Seiroku, it can be observed when the moon rises a little before sunset. The best chance is only a few days in a year; however, it is an excellent site for observation since there is nothing to obstruct the view on the Westside road. The phenomenon of overlapping Mt. Fuji melting in the blue evening sky and a shining white moon is just fantastic. It is scenery which you can feel Mt. Fuji and the universe.



## Diamond Fuji from Mt. Ryugatake

At Mt. Ryugatake at the elevation of 1,485 m located at the south shore of Lake Motosuko, "Diamond Fuji" can be observed at the first sunrise on year's end to New Year's Day.



3



To meet unseen Mt. Fuji

West Side Story  
Story  
1

# A story of ever-changing Mt. Fuji



Panorama 360° VR  
Read QR Code with a smartphone  
for 360-degrees panoramic view

## Mt. Fuji designed on 1,000-yen bill (Lake Motosuko)

A-2

"Lake Motosuko", the deepest lake among Fuji five lakes has a high transparency and beauty of ultramarine water is the best among five lakes. The "Sakasa Fuji"(Mt. Fuji as reflected in a lake) viewed from the northwest shore of Lake Motosuko is "the lake and Mt. Fuji designed on 1,000-yen bill and old 5,000-yen bill". You may encounter this rare scene which can only be seen several times a year like a calm day in May if you are lucky.

## Motif of 1,000-yen bill, "Mt. Fuji, Kohan no Haru" by Koyo Okada

"Koyo Okada" is the first Mt. Fuji photographer of the day. One thousand yen bill was designed based on one of his representative work, "Kohan no Haru". Mt. Fuji that Mr. Koyo had loved can be viewed from the mountain path near the north shore of Lake Motosuko at almost the same composition.



## Benifuji and the Moon

"Benifuji" is a natural phenomenon which can be observed only in the season when Mt. Fuji is covered with snow. Afterglow of the morning sun or the evening sun glows on the white surface of the mountain and Mt. Fuji is dyed flaming red. At Westside where the entire Mt. Fuji can be viewed close at hand, it is even more dramatic.



## Starry sky and Mt. Fuji

Stars, constellations, meteors, and Milky Way in the sky above the sacred mountain... It is a superb view that is special at Westside with clear air, few artificial lights, and open sky.

4



## Kodaki Fuji of Lake Shojiko

B-1

From the northwest shore of "Lake Shojiko" which was praised as "Switzerland in East Asia" by a foreign traveler in the Meiji period, it looks as if Mt. Fuji is holding "Mt. Omuroyama", a flank volcano in front of Mt. Fuji. It is representative scenery created by Mt. Fuji after several volcanic eruptions.

## Fumotoppara no Fuji

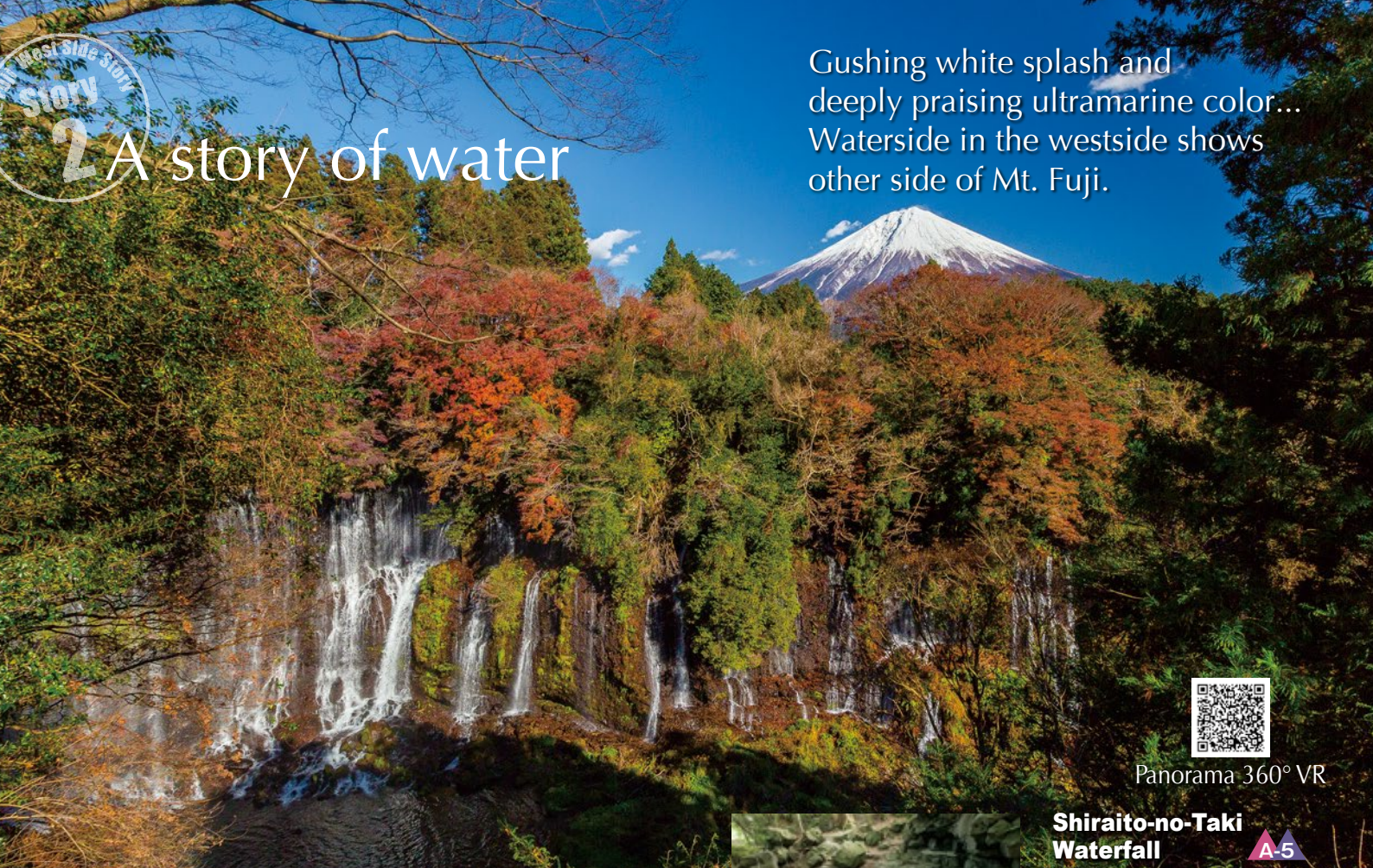
A-3

It is a campground located at the foot of Mt. Fuji that can enjoy full view of Mt. Fuji. Pitching a tent in the extensive grass area, you can enjoy camping and the view of Mt. Fuji all day that changes its face every moment to the fullest.



5





West Side Story  
story  
2

## A story of water

Gushing white splash and deeply praising ultramarine color... Waterside in the westside shows other side of Mt. Fuji.



Panorama 360° VR

By a roadside in Westside, there was a world of surprisingly rich water.  
Some waterside makes a loud noise by gushed water and other is enveloped in a silence....  
The world of water which suddenly appears at the foot of Mt. Fuji that do not have river on its mountain body is reflecting rare mysteries of nature like a mirror.  
Another side of Mt. Fuji that holds people in awe as a malignant volcanic mountain.  
Mt. Fuji has enriched the land, cultivated lives, and blessed worshippers who climb the mountain as a holy place.  
And then, the waterside brings refreshing moment to visitors...  
Motherly Mt. Fuji was here.



### Jimba-no-Taki Waterfall A-4

It is in the Inokashira village that is a preservation natural spring district. In Kamakura Period, Minamoto no Yoritomo pitched a camp when he was hunting (Makigari) in Westside. The fall consists of water from upper stream and water welling up after filtering through lava layers. The shape is like a small-scale Shiraito-no-Taki Waterfall, but this is a little-known good spot which allows you to go close to the waterfall basin.



### Trout fishing and Wasabi A-4

Located near Jimba-no-Taki Waterfall, rainbow trout and Wasabi are cultivated using well water blessed from Mt. Fuji. Visitors can enjoy fishing and barbeque while refreshing with clear, cold springwater. This is ideal as a leisure activity in summer.



### Obinmizu A-5

It is near "Shiraito-no-Taki Waterfall". The pond is clear like a mirror and water is welling up from the ground. The legend that Minamoto no Yoritomo fixed his hair at the pond gave the name to the place. It was one of the important holy spots in Westside along with "Hitoana" at the Fujiko days.

※Minamoto no Yoritomo  
A military general in the Kamakura period (1192) and the first Shogun who founded the Kamakura Shogunate.

### Himemasu (Kokanee) in Lake Motosuko B-2

Kokanee can only live in clean, cold water. Lake Motosuko is rare fishing spot in Japan. The flesh is pink and has no distinct smell of freshwater fish. It tastes excellent and is good eaten as Sashimi.



### Wakutamaike Pond B-6

Well water which comes from snow melt on Mt. Fuji is gushing in the precincts of "Fujisan Hongu Sengen-taisha Shrine" in Fujinomiya City. The main enshrined deity, "Konohanano sakuyahimeno mikoto", was enshrined at hongu as a water virtue goddess in order to bring volcanic eruptions under control. It is said that this place was selected because miraculous water wells up. In old times, it used to be a place for purification before Mt. Fuji pilgrimage. There are many visitors who are praying for water virtue still today.

### Shiraito-no-Taki Waterfall A-5

Greater volume of water tumbles down like white thread a huge arch-shaped rocky cliff with the size of 20 m high and 150 m long. Different from other falls which have an upper river, water comes from Mt. Fuji, welling up from the ground after filtering through lava layers. It shows how much Mt. Fuji is filled with abundant water. Minamoto no Yoritomo who visited here when he came for hunting at Mt. Fuji described its beauty with Waka. At the Fujiko days, it was an important holy spot of pilgrimage.

※Waka  
A classical Japanese poem format, 31-syllable verse form with five lines in a 5-7-5-7-7 pattern.



### Local Sake brewed with Mt. Fuji water

Abundant with well water, Seiroku is dotted with several Sake breweries. "Fujimasa brewery, Asagir-kura," the nearest brewery from Mt. Fuji, opened in "Asagiri Food Park". The popular label, "Genkotsu," is a sharp sake with dry, refreshing flavor.



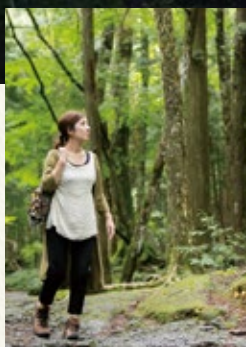
# A story of forest

In the mysterious forest born after the violent eruptions, there was a long lapse of time which cannot be viewed from outside.



Panorama 360° VR

There is a wonderful forest path which is not well known. You can experience the inside world of Mt. Fuji while enjoying a luxurious and Japan's best forest bathing. The age of the forest is 1150 years old. It was created by the second newest eruption of Mt. Fuji. In the forest with bare lavas, trees grow root on alluvial soil for its life, and forest floor which cycle of alternation of generations is fast is covered by a carpet of bright moss. In the forest filled with the vitality, wild animals and plants have established an independent ecosystem. Surprisingly, stories of Mt. Fuji and forest have just started.....



## Aokigahara Jukai ▲▼ B-2

When sunbeams shine through branches of trees, lava forest covered by a carpet of moss becomes more and more mysteriously brilliant. Jukai forest is becoming more popular these days as one of the best nature observation trails and forest bathing courses. The area where the Shojiguchi climbing trail and the Tokai nature trail overlaps is called Mt. Fuji primeval forest. And there are many visiting spots such as "Fuji wind cave" and one of 100 best forests, "Japanese Beech forest at Mt. Omuroyama".

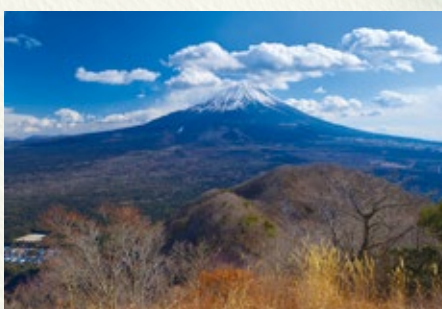


## Mt. Kenashi ▲▼ A-3

Near the top of Mt. Kenashi is the highest point where you can see a full view of Mt. Fuji from the west. Its shape having Asagiri highland at the foot is beautiful and covered with lush greenery unlike its name (Kenashi means no hair). From the top of the mountain at the elevation of 1,946 m, "Kengamine," at the top of Mt. Fuji and "Osawa Kuzure" are visible to the naked eye. And Minami Alps and Suruga Bay can be observed on a sunny day.

## Mt. Panoramadai ▲▼ B-2

From "Mt. Sanpobunzan", go along the mountain ridge to "Mt. Panoramadai". Since it is located at the middle of Lake Shojiko and Lake Motosuko, two lakes in Jukai forest and "Kodaki Fuji" can be thoroughly enjoyed.



## Tokai Nature Trail

It is a long distance nature trail developed in mid-1970s across 11 prefectures. The course goes from the north side of Mt. Fuji through Aokigahara Jukai to Westside. The trail is full of natural scenery, so it is recommended for walking trip in Westside.

## Forest feast. Exquisite gibier dishes Log-grown mushrooms

The climate is suitable to the cultivation of mushrooms. It is a specialty product of the forest of nature-rich Mt. Fuji Westside. Cultivated by the traditional log-grown method, the mushrooms are thick and have exceptionally good taste with a rich flavor and aroma.

## Shika Curry (Venison Curry)

It is an ideal food with high protein, low fat, low calories, and highly nutritious. It is a specialty dish which stewed venison having plenty of fat which had grown in Mt. Fuji area.



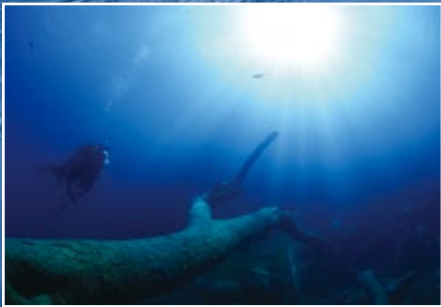


# THE GREAT JOURNEY

Westside is a mecca for outdoor activities under the wilderness of Mt. Fuji. To the sky! To the lake! To the highland! More freely, and more actively!

## Camping

There are many appealing campsites such as lakeside campsites at Lake Motosuko and Lake Tanukiko, free campsites in the vast grassy plains, auto campsite in the forests, etc. Camping in Westside is good for beginners because facilities are well-equipped and it is easy to get fresh food materials. Let's sleep under the star-filled sky and see the beautiful Mt. Fuji glowing in the morning sun



## Lake diving

Deep, beautiful Lake Motosuko is one of the best fresh water altitude diving spots. It is with full of appeals and discoveries different from a sea diving. In the ultramarine world with lava on the lake bed and swinging waterweed, himemasu and lake smelt are swimming gracefully. Another world of Mt. Fuji is waiting for you.



## Rental bicycles

### Lake Tanukiko Campground

634-1 Saori, Fujinomiya City, Shizuoka  
☎0544-27-5240 (Fujinomiya City office of tourism)  
Rental hours / 8:00 ~ 16:00 Fees / 30 minutes: ¥300, 60 minutes: ¥500

## Paragliders

Asagiri is a holy ground of paraglider which can overlook World heritage Mt. Fuji while flying in the sky. Beginners can experience a trial flight or a tandem flight with an instructor. Feel the wind on your body and see the exclusive view of Mt. Fuji which only the paragliders can see.



## Fishing

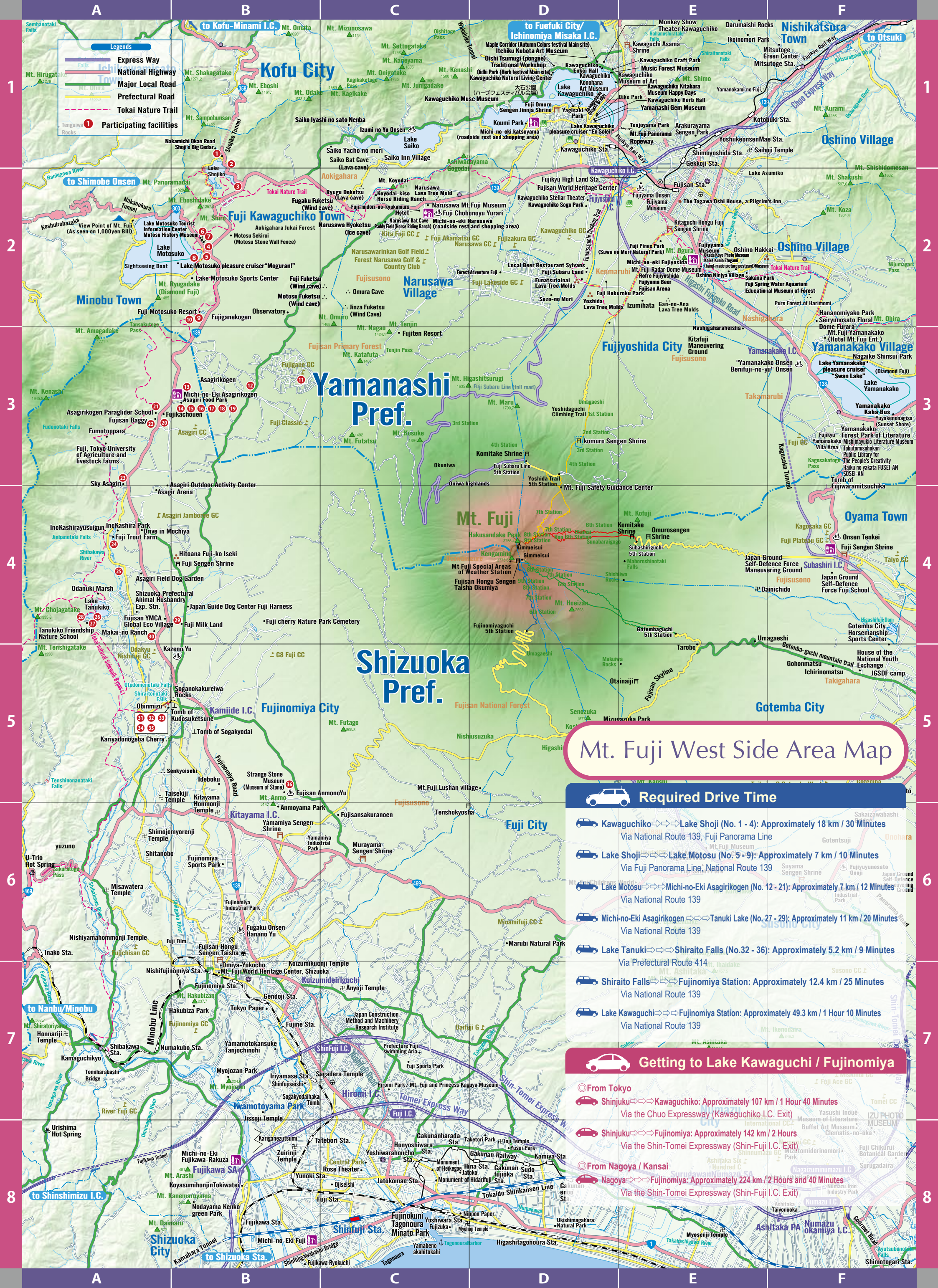
Lakes created by Mt. Fuji such as Lake Shojiko, Lake Motosuko, and Lake Tanukiko, etc. are heavens for people who love fishing. Including Japanese crucian carp, lake smelt, and kokanee, various fishing can be enjoyed in each season. The beautiful scenery of each lake including ultramarine lake water and Sakasa Fuji reflected in the lake is also fascinating.



## Rental car offices

<b>TOYOTA Rent-A-Lease Shizuoka, Fujinomiya Office</b>	14-7 Nishikoizumi-cho, Fujinomiya City ☎0120-926-385 Hours / 8:00 ~ 20:00 (1/4 ~ 12/31) 8:00 ~ 18:00 (1/1 ~ 1/3) open 365 days
<b>ORIX Rent-A-Car Fujinomiya Station SS counter</b>	3-17 Higashi-cho, Fujinomiya City ☎0545-62-5421 Hours / 8:00 ~ 20:00 (year round)
<b>Nippon Rent-A-Car Kawaguchiko Station</b>	3647-1 Funatsu, Fujikawaguchiko Town, Minamitsuru District, Yamanashi ☎0555-72-0165 Hours / 8:00 ~ 19:00 (year round)
<b>TOYOTA Rent-A-Lease Fujikawaguchiko Office</b>	4657 Funatsu, Fujikawaguchiko Town, Minamitsuru District, Yamanashi ☎0555-72-1100 Hours / 8:00 ~ 20:00 (1/4 ~ 12/31) 8:00 ~ 18:00 (1/1 ~ 1/3) open 365 days





# Mt. Fuji West Side Area Map

## Required Drive Time

- Kawaguchiko⇄⇄⇄Lake Shoji (No. 1 - 4): Approximately 18 km / 30 Minutes  
Via National Route 139, Fuji Panorama Line
- Lake Shoji⇄⇄⇄Lake Motosu (No. 5 - 9): Approximately 7 km / 10 Minutes  
Via Fuji Panorama Line, National Route 139
- Lake Motosu⇄⇄⇄Michi-no-Eki Asagirikogen (No. 12 - 21): Approximately 7 km / 12 Minutes  
Via National Route 139
- Michi-no-Eki Asagirikogen⇄⇄⇄Tanuki Lake (No. 27 - 29): Approximately 11 km / 20 Minutes  
Via National Route 139
- Lake Tanuki⇄⇄⇄Shiraito Falls (No.32 - 36): Approximately 5.2 km / 9 Minutes  
Via Prefectural Route 414
- Shiraito Falls⇄⇄⇄Fujinomiya Station: Approximately 12.4 km / 25 Minutes  
Via National Route 139
- Lake Kawaguchi⇄⇄⇄Fujinomiya Station: Approximately 49.3 km / 1 Hour 10 Minutes  
Via National Route 139

## Getting to Lake Kawaguchi / Fujinomiya

- From Tokyo
  - Shinjuku⇄⇄⇄Kawaguchiko: Approximately 107 km / 1 Hour 40 Minutes  
Via the Chuo Expressway (Kawaguchiko I.C. Exit)
  - Shinjuku⇄⇄⇄Fujinomiya: Approximately 142 km / 2 Hours  
Via the Shin-Tomei Expressway (Shin-Fuji I.C. Exit)
- From Nagoya / Kansai
  - Nagoya⇄⇄⇄Fujinomiya: Approximately 224 km / 2 Hours and 40 Minutes  
Via the Shin-Tomei Expressway (Shin-Fuji I.C. Exit)





# A story of faith

## Fujisan Hongu Sengen-taisha Shrine ▲B-6

It is the head shrine of all Sengen-jinja shrines that worship Mt. Fuji in Japan... Its origin of the shrine is that Asama no ookami (Konohanano sakuyahimeno mikoto) was enshrined in order to bring volcanic eruptions under control.

A road of worship, a road of pilgrimage which go back two thousand years in time

Mt. Fuji has been the sacred mountain for Japanese with awe, respect, and gratitude as the malignant god of fire and the motherly god of water since the ancient times. Lakes at the foot, well water, lava caves, and climbing path... all of these are the holy spots of Mt. Fuji. A universe of faith in Mt. Fuji that is magnificent and profound from the top to the extensive skirt has been established while changing the methods of prayer in history. And with Mt. Fuji registered as a World Cultural Heritage site, it seems that the road in Westside having splendid Mt. Fuji close at hand has revived as a road of pilgrimage.



## Yamamiya Sengen-jinja Shrine ▲B-6

It has no main hall or worship hall and prays to Mt. Fuji as a sacred object from the distance. It is the oldest Sengen-jinja shrine inheriting the style of traditional Japanese nature belief.



## Murayama Sengen-jinja Shrine ▲C-6

The shrine is located at the starting point of the oldest climbing trail, "Murayama Entrance". Mizugoriba (place for cold-water ablation) and gomadan (an altar for fire ceremony) used by Yamabushi (monk) remain at the site and tell a history of Fujishugen and the syncretization of Shinto with Buddhism.



## Hitoana Fujiko Ruins ▲B-4

In the precinct of Hitoana Sengen-jinja Shrine, there is a lava cave which "Kakugyo", the founder of Fujiko, attained enlightenment from the god of Mt. Fuji. Over 200 of monuments and towers speak the prosperity of Fujiko.



## Taiseki-ji Temple ▲A-5

It is the head temple of Nichiren Shoshu and the largest temple in Fuji Gozan. There are beautiful wooden buildings including Five-story Pagoda (National Important Cultural Property), Sammon Gate, and Goei-do Hall on the premises. It is also famous for approximately 5,000 cherry trees.

# A story of borders

Suruga and Kai, Sea and Mountain Mt. Fuji, soaring on the border Trace a historic drama on the "Country Border"

Suruga (Shizuoka) and Kai (Yamanashi) has been bound by deep affinity since ancient times. One is a seaside country and another is a mountain country. National Route 139 overlapped on West Road was also called the "Salt Road". In the Middle Ages, both countries were the center of a history, and in the Early-modern times, it has long thrived as a post-station town and a barrier on main Kaido road from Edo. Two countries have been connected by Mt. Fuji since a long time ago. On the road of the border, scenery of memories which Mt. Fuji has watched over remained.

## Nakamichi Okan Road (Kosun Kaido Road) ▲B-1

It is an old and the shortest road connecting Kai and Suruga. Takeda Shingen, Oda Nobunaga, and Tokugawa Ieyasu used the road leading an army in Sengoku Period, and in Edo Period it was used to distribute salt and seafood. There are historic sites along the pass and forest path looking at Mt. Fuji, and a history of a road on a border continue to be handed down quietly.



## Fuji no Makigari (hunting) ▲B-2

Minamoto no Yoritomo had become the Sei-i Taishogun (the head of generals) in 1193, and in May 1194, he held a huge Makigari at the west foot of Mt. Fuji. Makigari was held in order to show the prestige and military exercises, and many Gokenins (shogunal retainers) participated as marksmen. There are many traditional places regarding this great historic story are dotted in the Fujinomiya side.



## Otodome-no-Taki Waterfall ▲A-5

It was named because the sound of the fall stopped when the Soga brothers were discussing avenging behind the kakureiwa rock.



## Motosu Sekirui (Motosu Stone Wall Fence) ▲B-2

In Aokigahara Jukai around Mountain castle ruins at the north of Lake Motosuko, there is an old, mossed masonry retaining wall made with lavas. It is supposed that it was constructed in order to protect Mountain castle ruins in Motosu in the Takeda era, and there was the "Nakamichi Okan" beside the stone mound in the past.



## Adauchi by the Soga brothers ▲B-5

Among several dramas happened at the "Fuji no Makigari", there is the famous "Soga story". The Soga brothers, Sukenari and Tokimune, attacked Kudo Suketsune to avenge their father. The tombs of the brothers who have attained their cherished object remain. ※Adauchi (Vengeance) A traditional custom in the Japanese middle age, to revenge privately against a person who committed a murder.





## A story of pioneer

A stretch of beautiful green land  
on the skirt of Mt. Fuji.  
In the landscape like a symbol  
of Westside



As the sun shines and fogs are cleared, dairy cattle are eating grass in a wide stretch of grassland which doesn't look like Japan.

This beautiful "Asagiri Highland" "Fujigane Highland" where predecessors cultivated through considerable efforts on the old-Fuji mudflow is the main stage of the west side area.

The open land filled with pioneer spirit has become a paradise for people who love a freedom and activities.

Camping and sports, food and music, nature and adventure....  
If there is Mt. Fuji, it is just perfect!



Fujigane Highland

14

### Asagiri Highland B-4

The name is derived from the morning fog. It is cool in summer and has been a popular area since the old times. Dairy farming flourishes in the area. Some ranches have shops and restaurants. Also, there are ranches for visitors to experience dairy farming which family visitors can enjoy. Magnificent scenery like a star-studded sky or Mt. Fuji and the bright moon over Japanese pampas grass are also symbols of Asagiri Highland.



#### Soft Ice Cream & Gelato

The famous soft ice cream and gelato which uses plenty of highland milk taste rich but not too sweet and delicious. How about highland strawberries and toppings on your ice cream?

#### Highland Milk & Cheese

Dairy cows raised in pastures with clean air and Mt. Fuji water. "Asagiri Kogen Milk" "Fujigane Kogen Milk" features a thick body and rich taste and is light in summer and thicker in winter. Just squeezed "fresh" milk can be enjoyed in the area. Milk products which use 100% raw milk with no additives are also recommended.



### Fujigane Highland B-3

It is the large dairy region on the Yamanashi Prefecture side and continues to Asagiri Highland on the Shizuoka side. "Fujigane" is known for a highland cottage area from olden days. You can meet a large-scale Mt. Fuji like the green field, Pearl Fuji, a starry sky, and a winter snowfield, etc.

15



# Mt. Fuji West Side Story Passport

## Participating facilities

Present this Mt. Fuji West Side Premium Passport Guide at the facilities in the list to receive special benefits.

Expires on: March 31, 2021 (Wednesday)



1

### Restaurant Kotobuki

1049 Shoji, Fujikawaguchiko Town  
☎0555-87-2303



Having Lake Shojiko is close at hand, we have tables on the terrace (dogs are welcomed!). We serve many local dishes such as

"venison curry," "venison meat sauce" (both new in the menu!) and "medicinal Hoto noodles." We have ample space for dining up to 100 people.

\*Open hours/ 10:00~19:00 (last call at 18:30).

Winter: 10:00~18:00 (last call at 17:30)

\*Open period/ year round \*Closed/ Tuesdays in Jan. ~ Apr., Jun., Sept., Dec. \*Reservation/ No (Yes for a large group)

2

### Y Shop, Shojiko

588-87 Shoji, Fujikawaguchiko Town  
☎0555-20-6530



It has become an eccentric convenience store which has developed uniquely in a long time. Venison and wine in 1.8 liter bottle can

be purchased.

\*Open hours/ 6:00~20:00

\*Winter/ 6:00~19:00

\*Open period/ year round

\*Closed/ none



3

### Restaurant New Akaike

550-111 Shoji, Fujikawaguchiko Town  
☎0555-87-2351



It is a restaurant located at the lakeside of Lake Shojiko. Lake Shojiko through the windows is beautiful. We serve delicious

homemade dish.

\*Open hours/ 9:00~18:00

\*Open period/ year round

\*Closed/ not fixed

\*Reservation/ Yes for lodging



4

### Kosenso

127 Motosu, Fujikawaguchiko Town  
☎0555-87-2032



It is located in front of the Motosuko bus stop. The souvenir shop is on the first floor and the restaurant is on the second floor. Wi-Fi is

available in the building.

\*Open hours/ 8:00~18:00

\*Open period/ year round

\*Closed/ none



5

### Motosukan

128 Motosu, Fujikawaguchiko Town  
☎0555-87-2037



We make hoto noodles with our original soup stock and miso. We spend two days to prepare venison curry which uses the

locally produced deer meat. Soft ice cream is also popular.

We have tables on the terrace for customers with pets.

\*Open hours/ 8:30~17:30

\*Open period/ year round

\*Closed/ not fixed

\*Reservation/ Yes, for a large group

6

### Honjin Tsukasa

120 Motosu, Fujikawaguchiko Town  
☎0555-87-2038



For 50 years since establishment, we have maintained the recipe of soup which is handed down in the area and serve soba and udon. It has a

rich flavor of dried Shiitake mushrooms made in Motosu. Local cuisine of Yamanashi such as torimoto-suni, hoto, venison curry, etc. can be enjoyed.

\*Open hours/ 9:00~17:00

\*Open period/ year round \*Closed/ Wednesday

\*Reservation/ Yes

7

### MOTOSUKO DIVE RESORT

111 Motosu, Fujikawaguchiko Town  
☎0555-87-2287



Lake Motosuko which is known for the most clear water among Fuji Five Lakes surrounding a world cultural heritage Mt. Fuji is a lake

that can bring the best of diving. Please enjoy a trial diving and a fun diving. A hunting experience tour held in winter is another attractive program. (Diving season: June ~ November, Hunting season: November ~ March)

\*Open hours/ 8:00~17:00 \*Open period/year round

\*Closed/ not fixed \*Reservation/ Yes

8

### Lake Motosuko Pleasure Cruiser "Moguran"

18 Motosu, Fujikawaguchiko Town  
☎0555-72-0029



Submarine-shaped pleasure boat floating on beautiful, ultramarine Lake Motosuko. Carps, kokanee, rainbow

trout, and chubs, etc. can be observed through the underwater observation windows in the boat. At the rear deck, 360°

degrees panoramic view can be enjoyed.

\*Open hours/ 9:30~15:30 (operates every 40 minutes)

\*Open period/ year round except Mid Nov ~ Mid Mar

\*Closed/ Mid Mar ~ Mid Apr, End May ~ Mid Jul, Sept ~ Nov. Operates only

weekends & holidays, Mid Apr ~ End May, Mid Jul ~ August: Operates daily

\*Reservation/ Yes, if more than a group of 15

9

### Shiba-zakura Festival

(Moss Phlox) Fuji Motosuko Resort 212 Motosu, Fujikawaguchiko Town  
☎0555-89-3031



At the venue where eight hundred thousand Shibazakura seedlings are blooming (which is the largest in the capital region), "Mt. Fuji" that looks

beautiful with remaining snow and the Shibazakura can be enjoyed together. The food festival, "Mt. Fuji delicious food festival" with gourmet food of Mt. Fuji area is also held.

\*Open hours/ 8:00~17:00

\*Open period/ Mid April~End May(determined by blooming condition)

11

### Fujigane Green Club

2-1Fujigane, Fujikawaguchiko Town  
☎0555-89-2214



It is a short golf course in Fuji doctor's village in refreshing Fujigane Kogen Resort House Area located at the foot of Mt. Fuji between eleva-

tions of 1,000m and 1,200m.

\*Open hours/weekdays=9:00~16:00, weekends & holidays: 8:30~16:00

\*Open period/Closed=12/1/2020 ~ end of Mar/2021

\*Closed/ Wed. (open holidays & Obon festival)

\*Reservation/ Yes

10

### Diamond Fuji 2020-2021

212 Motosu, Fujikawaguchiko Town (Fuji Motosuko Resort)  
☎0555-89-2127



One of the winter features, "Diamond Fuji." The phenomenon that the sun overlaps with Mt. Fuji and shines like a diamond is a precious event which

can only be observed at certain time and place. Fuji Motosuko Resort is the best spot for this show.

\*Open hours/ 7:00~9:00

\*Open period/ 2020.12.5,2020.12.6 and 2020.12.27~2021.1.11

12

### Marukyu Shokudo

1270 Fujigane, Fujikawaguchiko Town  
☎0555-89-2509



At the parking, wonderful view of Mt. Fuji from its skirt to the top. Special benefit for dining customer. HAPPY, HAPPY. Portion is large

and price is reasonable. Please enjoy your meal and the view of Mt. Fuji.

\*Open hours/ 10:30~18:30 (after 18:30, it is available by reservation) \*Open period/ year round \*Closed/ not fixed

\*Reservation/ Yes

14

### Asagiri Food Park

449-11 Nebara, Fujinomiya City  
☎0544-29-5101



The workshops of local food which have received blessings of Mt. Fuji are gathered at the "Asagiri Food Park". Eat, walk, view, and feel.

Please enjoy the "promenade of good taste" while spending refreshing time at the foot of Mt. Fuji.

\*Open hours/ 9:00~17:00

\*Open period/ year round

\*Closed/ not fixed

\*Reservation/ Yes

13

### Michi-no-Eki Asagiri Kogen

492-14 Nebara Aza-takarayama, Fujinomiya City  
☎0544-52-2230



It is located at the elevation of 900m in Asagiri highland having Mt. Fuji in the back. Soft ice cream made with Asagiri highland milk and meat

products such as ham are popular. At the restaurant, Nikudon and homemade hamburger steak made with Yogurt pork and fresh onion are popular. We are making our efforts to provide farmers' vegetables focusing on from making soil.

\*Open hours/ 8:00~18:30(winter: 8:00~18:00)

\*Open period/ year round \*Closed/ none

15

### Sweet Potato Kobo Kakutani

449-19 Nebara, Fujinomiya City  
☎0544-52-0102



Kiriboshi-imo (dried sweet potato) and SweetPotato using sweet potatoes produced in Fujinomiya (mainly) are sold. You can make Imokenpi at

the Kobo. Reservation can be made by phone. (Season for Kiriboshi-imo is from November to May.)

\*Open hours/ 9:00~17:00

\*Open period/ year round

\*Closed/ none

\*Reservation/ Yes for trial program

16

### Tea Kobo Fujien

at Asagiri Food Park  
449-17 Nebara, Fujinomiya City  
☎0544-28-3412



At the foot of Mt. Fuji, we produce and sell tea at own tea garden which we prepared from soil.

At the tea café in good location, visitors can sample genuine

tea for free. Also, we serve tea-flavored soft ice cream, tea sweets, tea soba noodles, etc. You can also experience tea

blending and take a factory tour.

\*Open hours/ Apr ~ Jun, Sept ~ Nov: 9:00 ~ 17:00, Jul ~ Aug: 9:00 ~ 17:30, Dec ~ Feb: 9:00 ~ 16:00.

\*Open period/ year round \*Closed/ Thursdays between

December and February. 12/30 ~ 1/1

\*Reservation/ Yes for trial program

17

### Ueno Seika Asagiri Kobo

449-18 Nebara, Fujinomiya City  
☎0544-52-2115



Using ingredients grown at the foot of Mt. Fuji and Mt. Fuji spring water, we make sweets such as the specialty Shoji river Yokan, Daifuku,

Manju, etc. in the traditional way.

\*Open hours/ 9:00~17:00. Dec-Feb: 9:00~16:30

\*Open period/ year round

\*Closed/ none

\*Reservation/ Reservation is

needed for cookie-making



18

### Fujimasa Sake Brewery

450-1 Nebara, Fujinomiya City  
☎0544-52-0313



The sake brewery which is the nearest to Mount Fuji. A tour of Kura and a Sake tasting are always available. Cosmetic products made with Mt. Fuji spring water and junmaishu

are also worth a try.

\*Open hours/ 9:00~17:00 (9:30~16:30 in Dec - Feb)

\*Open period/ year round

\*Closed/ Thursdays in Dec.~ Feb.

\*Reservation/ Reservation is needed for sake-tasting game



19

## Asagiri Milk Co., Ltd.

449-1 Nebara, Fujinomiya City  
☎0544-52-0333



Visit the manufacturing process of Asagiri milk and other dairy products made from the fresh raw milk of Asagiri Highland at the foot of Mount Fuji for free. (Free tasting available) Other than

milk and cheese, we also have soft ice cream only available at the Highland, confectionery, and snacks such as mozzarella pizza (only available on the weekends).

\*Open hours/ 9:00~17:00

Dec-Feb: 9:30~16:30

\*Open period/ year round

\*Closed/ Thursdays in Dec.~ Feb.



21

## Asagiri Kogen Paragliding School

282-1 Nebara, Fujinomiya City  
☎0544-52-1031



Take a beautiful flight in the vast Asagiri Kogen highlands overlooking Mt. Fuji! Asagiri Kogen Paragliding School will help you realize your

dream of flying through the sky! For men and women of all ages. Come try it out!

\*Open Hours/ 9:00~18:00

\*Open period/ year round

\*Closed/ none

\*Reservation Required

23

## Sky Asagiri

499 Fumoto, Fujinomiya City  
☎0544-52-0304



It is one of the largest paraglider school in Japan which you can enjoy strolling in the sky while looking at Mt. Fuji spreading in front

of your eyes. At the tandem course, you can fly from a cliff of 300m with an instructor.

\*Open hours/ 9:00~17:00

\*Open period/ year round

\*Closed/ Thursdays

\*Reservation/ Yes (TEL or email)



25

## Inokashira Trout Farm

1884-1 Inokashira, Fujinomiya City  
☎0544-52-1141



It is a trout farm located in the Inokashira natural springs area which is pure spring water from the foot of Mt. Fuji. We are also rear-

ing char and landlocked salmon, red-spotted masu trout in addition to trout, and fishing is available.

\*Open hours/ 9:00~17:00

\*Open period/ year round

\*Closed/ Mondays (Open if Monday is a holiday)

27

## Tanukiko Fureai Shizenjuku

633-14 Saori, Fujinomiya City  
☎0544-54-5410



The first nature school operated by Ministry of Environment is located at the lakeside of nature-rich Lake Tanukiko. Admission is for free.

The two-story, large nature experience house which is available in all-weather, exciting events and craftworks exhibit are waiting for your visit!!!

\*Open hours/ 9:30~16:30 \*Open period/ year round

\*Closed/ Mondays in Apr ~ Oct. Mondays and Tuesdays in Nov ~ Mar

\*Reservation/ No (some pay programs need reservations)

20

## Fuji Kachoen

480-1 Nebara, Fujinomiya City  
☎0544-52-0880



Anytime you visit, non-ordinary experience is waiting for you. Flowers are in full bloom all year round in the huge greenhouse, and

owls are from around the world. It is exciting to feed macaws, emus, and penguins. The hawk and owl show is performed daily!!

\*Open hours/ Apr-Nov: 9:00~17:00, Dec-Mar: 9:00~16:30

\*Open period/ year round \*Closed/ none

22

## Fujiyama Buggy

282-1 Nebara, Fujinomiya City  
☎0566-83-8500



Enjoy an ATV trek through the forests, lava fields, and meadows of Susono, near Mt. Fuji. We offer ATVs, all four-wheel drive, equipped with

saddles or seats that accommodate two to six people. Fun for couples and families.

\*Open Hours/ 9:00~17:30

\*Open period/ year round

\*Closed/ none

\*Reservations Required on Weekends

24

## Fuji Trout Farm,

Shizuoka Prefectural Research Institute of Fisheries  
579-2 Inokashira, Fujinomiya City  
☎0544-52-0311



Rainbow trout reared in cold (10 degrees), drinkable Mt. Fuji spring water can be observed. Feeding and fishing are available at extra

cost.

\*Open hours/ 9:00~16:30

\*Open period/ year round

(closed 12/29~1/3)

\*Closed/ none



29

## Fuji Milk Land

3690 Kamiide, Fujinomiya City  
☎0544-54-3690



Milkland located in great nature at the west foot of Mt. Fuji provides relaxing time and the blessings of Mt. Fuji.

Shops, restaurants, highland lodges are on the premises. Gelato, soft ice cream, and cheese made with locally produced milk, and fresh vegetables are popular.

\*Open hours/ 9:00~17:00 <It may vary by weather, etc.>

\*Open period/ year round

\*Closed/ none \*Reservation/ Yes for lodging

31

## Fujinomiya Yakisoba "Hiraishiya"

267-5 Kamiide, Fujinomiya City(Shiraito-no-Taki Falls)  
☎0544-54-0068



Because we want our customer to have the best Yakisoba, we cook it one by one with sincerity. You can have Yakisoba while looking at a

stream of clear water at the upstream of falls.

\*Open hours/ summer: 9:00~16:30 winter: 9:00~15:30

\*Open period/ year round

\*Closed/ none



33

## Takimotoya

261-1 Kamiide, Fujinomiya City(Shiraito-no-Taki Falls)  
☎0544-54-0007



It is a souvenir shop and restaurant in front of Shiraito-no-Taki. Waterfall We welcome our customer with a large line-up of products.

\*Open hours/ 10:00~17:30

\*Open period/ year round

\*Closed/ Tuesdays



35

## SHIRAITO GENERAL STORE

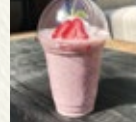
富士宮市上井出266-4  
☎0544-21-3360 ㊟なし



ハンモックカフェ、キャンプグッズ、お土産のショップ。富士山が眺望できるカフェでは、地元食材を使ったアウトドアライクなBBQメニューや、地元のクラフトビール、アメリカンシェイクなどのメニューを楽しめます。

営業時間/9:00~17:00

営業期間/通年



30

## Makaino Farm

1327-1 Utsuno, Fujinomiya City  
☎0544-54-0342



Located on Asagiri highland at the foot of Mt. Fuji, it is an experience-type farm where visitors can feel nature and touch animals. Home-

made products with a flavor of nature, activities relating food, and hand-made experience can also be enjoyed. Please come and spend a wonderful time.

\*Open hours/ summer (3/21~11/20): 9:30~17:30, winter (11/21~3/20): 9:30~16:30

\*Open period/ year round

\*Closed/ 11/21~3/20: Wednesdays and other (not fixed)

\*Reservation/ No (but reservation may be appreciated for a large group)

32

## Chidoriya

270-6 Kamiide, Fujinomiya City(Shiraito-no-Taki Falls)  
☎0544-54-0067



We are a shop at the entrance of Shiraito-no-Taki Waterfall. We have soft ice cream directly from Makaino Farm on Asagiri Highland, salt grilled Iwana

fish (White Spotted Char), and dumplings of specialty at Shiraito. We also have Hello Kitty Mount Fuji limited edition products.

\*Open hours/ 10:00~17:30

\*Open period/ year round

\*Closed/Wednesdays

(Open every day during the summer)



34

## Happy Bell Shiraito

260-1 Kamiide, Fujinomiya City (Shiraito-no-Taki Falls)  
☎0544-54-0921



We purchase genuine stone from around the world such as Brazil, China, the US, etc. for gemstone, and manufacture, sell, and

wholesale accessories. We can make one-of-a-kind accessory with a stone of your choice.

\*Open hours/ summer: 9:00~17:30, winter: 9:00~16:30

\*Open period/ year round

\*Closed/ none

36

## The Kiseki Museum of World Stones

3670 Yamamiya, Fujinomiya City  
☎0544-58-3830



At the museum, there are unusual rocks such as itacolomite and ulexite, interesting minerals, and fossils from around the world.

Treasure hunting are held on weekends and holidays, and you can take home the precious stones you found. (500 yen for 30 minutes)

\*Open hours/ 9:00~17:00 \* Open period/ year round

\*Closed/ Wednesdays (Next day if Wednesday is a holiday)

\*Open daily from 7/20 to 8/31

\*Closed/End of the year for about 7 days,End of Jan for about 5 days

\*Reservation/ Yes, if more than a group of 20



Receive discounts/benefits from 36 affiliated institutions!

# Mt. Fuji West Side Excursion Bus Ticket

with "Mt. Fuji West Side Story 'PREMIUM' Passport"

## 2days free pass!!



**Adult 2,500 Yen**  
**child 1,250 Yen**

Tickets available at: Shin-Fuji Station, Fujinomiya Station, Kawaguchiko Station, Fujisan Station

Available bus routes (valid for 2 days)	
	Shin-fuji Station~Fujinomiya Station~Kawaguchiko Station~Mt. Fuji Station Route
	Fujinomiya Station~Taiseikiji Temple Ent.~Kamijo Route
	Fujinomiya Station~Shiraito-no-Taki Waterfall Ent.~Kyukamura Fuji~Inogashira Route
	"Goriki-kun", a sightseeing bus tour which takes you around the World Heritage Sites of Fujinomiya City)
	Narusawa/Lake shojiko/Lake Motosuko sightseeing bus "BLUE LINE"
	Lake Saiko sightseeing bus "GREEN LINE"
	Lake Kawaguchiko sightseeing bus "RED LINE"



**[For information]**  
FUJIKYUSHIZUOKABUS, Inc.  
0544-26-8151  
FUJIKYUBUS, Inc.  
0555-72-6877

See bus route and schedule

20

The route and schedule are subject to change. Please check the details on our website, etc.



### How to Apply

#### ○The locations for the Stamps

The 36 recommended facilities listed in this booklet.

#### ○Send to

Put a stamp of adequate amount and send to Mt. Fuji Westside Area Tourism Association office by mail.

#### ○Number of stamps needed to apply

You can apply and win two prizes (both **A** and **B**) with 6 stamps.  
You can apply and win one prize (**A** or **B**) with 3 stamps.

#### ○Application deadline

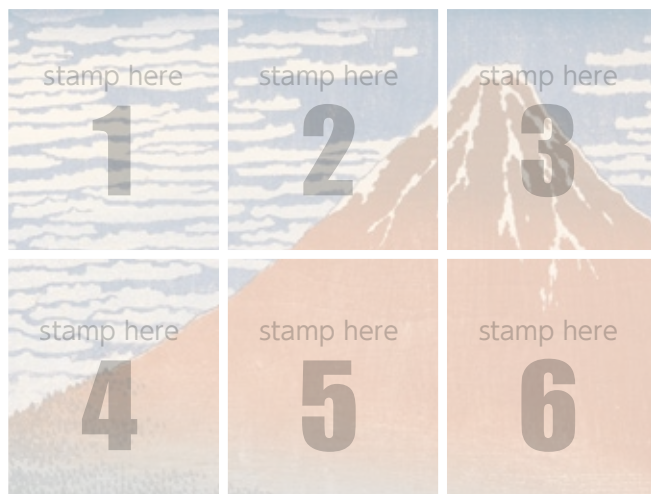
**1st: June 30 2nd: September 30**  
**3rd: December 31 4th: March 31**

#### ○Announcement of the winners

Mt. Fuji Westside Area Tourism Association will fairly select winners by drawing.  
No public announce will be made. Winner will receive a prize by mail.

#### ○Handling of personal information

Mt. Fuji Westside Area Tourism Association will use personal information received through the application only for the purpose of drawing and mailing. Application (stamp rally post card) will be stored at our office for a certain period of time and discarded after completion of work related to this event under the responsibility of the office.



**Obtain 3 or more stamps from different facilities and apply.**

To apply, please fill in your information on the other side and mail with 63-yen stamp adhered.

#### Prize **A**

Venison  
curry  
in Retort  
Pouches



#### Prize **B**

Fuji Milk Land,  
Fujisan  
Cheesecake



※Presents might be changed without notice





### Information on sightseeing

Fujinomiya City Tourism Division **TEL.0544-22-1155**  
 Fujikawaguchiko Town Tourism Division **TEL.0555-72-3168**

### Information on transportation

FUJIKYUKO.CO.,LTD. **TEL.0544-26-8151 TEL.0555-72-6877**

### POST CARD

63yen stamp  
here

4 1 8 8 6 0 1

静岡県富士宮市弓沢町150番地 富士宮市観光課内  
 富士山西麓地域観光連絡会議  
 「富士山西麓物語パスポート・スタンプラリー」係

Address 〒	
TEL	
Name	Age
	Gender M / F

Thank you for participating in Mt. Fuji West Side Story Passport Stamp Rally.  
 For future reference, please answer the following questionnaire.

#### 1. How did you know about Mt. Fuji West Side Story Passport?

- ☐ This guidebook ☐ Internet ☐ Newspapers / Magazines  
☐ Other( )

#### 2. Which means of transportation did you use to visit places on Mt. Fuji West Side Story Passport?

- ☐ Own car ☐ Local bus ☐ Bicycle ☐ Rental car ☐ Motorcycle ☐ Walk  
☐ Other( )

#### 3. What is the purpose of this trip?

- ☐ To visit the World Heritage Mt. Fuji ☐ Often visit Mt. Fuji  
☐ To see/participate in an event ☐ To climb Mt. Fuji  
☐ This Passport ☐ Other( )

#### 4. Do you have a favorite spot in Mt. Fuji Westside Area?

---

#### 5. Which prize would you like to win? (circle one, need 3 stamps to enter.)

- A( ) B( )