

Access Map

Plenty of tourist attractions and hot springs in the surrounding areas!

Shop for Fresh Fish!
Teradomari Ameyoko

Power Spot!
Yahiko Shrine

Approx. 15 km
Approx. 20 minutes

Approx. 20 km
Approx. 30 minutes

Approx. 13 km
Approx. 20 minutes

Regional Industries Promotion Center (Tsubame Sanjo)
Kashiwazaki
Shop for Souvenirs!

Exhibition Hall for Tableware and Cutlery
TsubameSanjo Regional Industries Promotion Center

Transit times to Sanjo-Tsubame I.C.

- To Niigata-Nishi I.C. ...Approx. 20 minutes
- From Joetsu I.C. ...Approx. 1 hour
- From Koriyama I.C. ...Approx. 2 hours
- From Takasaki I.C. ...Approx. 2 hours
- From Tsuogayama I.C. ...Approx. 2 hours 30 minutes
- From Nerima I.C. ...Approx. 3 hours
- To Yahiko Hot Spring ...Approx. 13 km • 20 minutes
- To Iwamuro Hot Spring ...Approx. 15 km • 25 minutes
- To Yutagami Hot Spring ...Approx. 18 km • 30 minutes
- To Yomogihira Hot Spring ...Approx. 50 km • 45 minutes
- To Tsukioka Hot Spring ...Approx. 60 km • 60 minutes
- To Oyu Hot Spring ...Approx. 80 km • 80 minutes
- To Yuzawa Hot Spring ...Approx. 100 km • 60 minutes
- To Senami Hot Spring ...Approx. 100 km • 70 minutes

- Hours of Operation : 9:30AM - 5:30PM
- Closed : 1st Wednesday of every month,
December 29th - January 3rd
- Admission Fee : Free
- Large-Scale Parking Accommodations : Large Buses 30
Passenger Cars 350

TsubameSanjo Regional Industries Promotion Center
Marketing and Sales, Product Tourism
〒955-0092 1-17 Sugoro, Sanjo, Niigata
TEL : 0256 - 32 - 2311
FAX : 0256 - 34 - 6167
e-mail eiyou@tsbjba.or.jp
U R L www.tsbjba.or.jp/kankou/english/index.html

Map of the Taubame/Sanjo Regional Industries Promotion Center area. The map shows the Sanjo-Tsubame I.C. at the top, with routes to Tsubame and Honda. The Yabiko Line runs horizontally, with stations for Honda, Aeon, and Komeiji. The Taubame River flows vertically through the center. The Taubame Expressway runs vertically on the right. The Sanjo River flows horizontally at the bottom. The Taubame/Sanjo Regional Industries Promotion Center is marked with a red 'P' and a red arrow pointing to it from the bottom left.

- We offer local metal goods at price



For more details

English

TSUBAMESANJO

TSUBAMESANJO
Industries Products Store
TsubameSanjo Regional



Traditions passed down for generations
 Feel it yourself by seeing and touching.

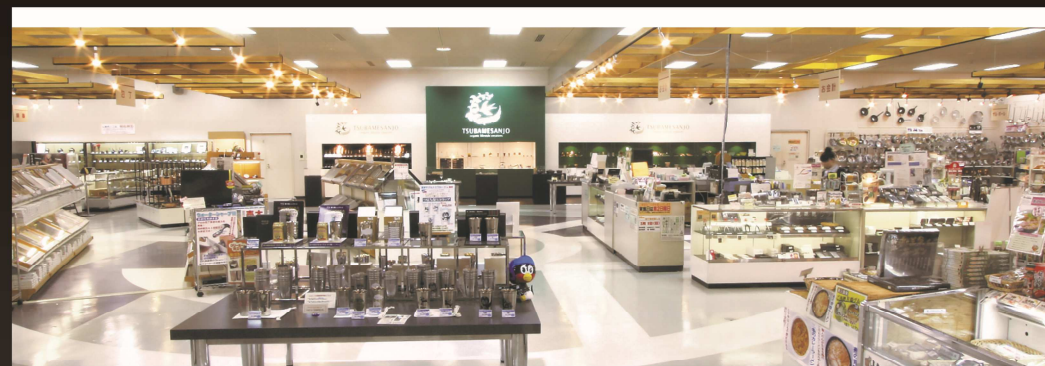
Sanjo's Works

Sanjo's blacksmithing traditions are said to have begun in 1625. In order to save the farmers suffering from the flooded rivers, Seibei Otani, the Izumozaki Magistrate, invited a nail blacksmith from Edo to teach and recommend the production of wakugi, Japanese nails, as a side business. Modern tools and knives that carry on the Sanjo blacksmithing tradition are well known all over Japan, and have become a specialty of Sanjo.



TSUBAMESANJO Well-designed high quality goods produced in the Tsubame Sanjo area have been gathered for exhibition and sales.

Products from Japan's leading metalwork region, Niigata's "TsubameSanjo" fill the 925m² hall.



Enjoy the treasures and local products that the city of craftsmanship, "Tsubame Sanjo", has to offer.



- | | | | | | | |
|---------------|-------------------|-----------------|------------|------------------|--------------------------|--------------------|
| Main Products | Variety of knives | Cast copperware | Tableware | Scissors | Kitchen tools | Household products |
| | Carpenter's tools | Gardening tools | Local sake | Koshihikari rice | Echigo confections, etc. | |