

Hotel Stay Guide

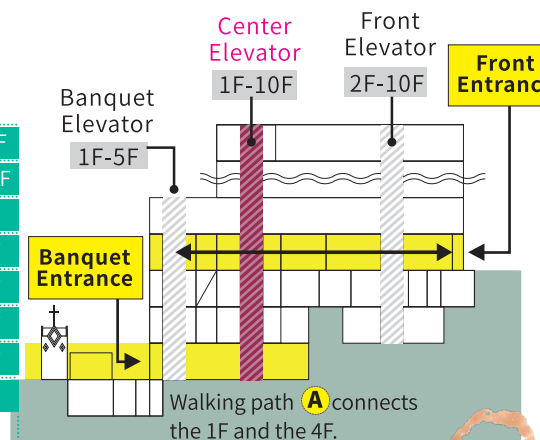
Foods, café, hot spring...

There are a lot of fun things to do in the hotel.

There are various shops and restaurants on the 1F and the 4F. In addition, there are dining places like Kappo Shisui on the 2F, which serves Japanese style course meals, Cantonese Cuisine Hisuicho and Shiroyama Party Hall on the 3F, and French Restaurant Le Ciel on the 10F.

Wi-Fi ID: shiroyama-wifi
Password: shiroyama2211

Guest Room / French Restaurant / Banquet Room	10 F
Guest Room	6-9 F
Guest Room / Direct elevator to Outdoor Onsen Satsumanoyu hot spring	5 F
Dining area for breakfast / Bar / Front desk	4 F
Cantonese Cuisine / Party Hall / Bar / Gift Shops	3 F
Outdoor Onsen Satsumanoyu hot spring / Spa	2 F
Banquet rooms / Japanese style course meals restaurant	1 F
Western-style buffet restaurant / Convenience store / Satsumaage Shop	BF
Bakery & Patisserie / Café / Japanese style restaurant	
Car Park / Shiroyama Brewery / Sweets Factory	



Tel.099-224-2211 Website: shiroyama-g.co.jp

This hotel was constructed in accordance with the topography of Shiroyama Hill, 108 m above sea level.



- Two entrances; "Front Entrance" on the 4F and "Banquet Entrance" on the 1F.
- Front desk is on the 4F.
- Outdoor Onsen Satsumanoyu hot spring is on the 3F.
- Direct elevator exclusive use of hotel guests to Satsumanoyu hot spring is on the 5F.
- Factories of In-house products such as craftbeer and sweets are on the basement.
- Shiroyama Observatory is a 5 minute walk from Front Entrance on the 4F.
- Two shuttle bus stops; In front of Garden Restaurant Holt on the left of Banquet Entrance on the 1F, and on the left out of Front Entrance on the 4F.

Freshly cooked!

01 Satsumabimi Gyokusen
From regular to original flavor, low-sugar
Satsumaage Shop
(local cuisine, deep-fried fish paste)

02 Maison de Faveur
Freshly made bread, handmade cake and baked confectioneries
Bakery & Patisserie

Shiroyama Brewery (Craft Beer)
Craft beer using unique offerings of Kagoshima
Craft Beer factory

Only show **your room key** for payment for meals and shopping!
Payment for all purchases you make in the hotel can be done at check-out.

Banquet Elevator at the end of the passageway

Satsuma Brand Gallery
Rows of Kagoshima Craftworks are displayed, such as Satsuma Kiriko Cut Glass, Satsuma-yaki Pottery, Authentic Oshima Tsumugi Silk Fabric, Tin Ware and etc.

To fully enjoy your stay, there are bars, a lounge and a gallery.

- Description of the icons
- W.C. Lavatory
 - Photo Spot
 - Shopping
 - Baby Room
 - Universal Lavatory
 - Nursing Room
 - Changing Room
 - TAXI TAXI Stand

For everyone from children to adults!
Casual style hotel buffet restaurant.
The whole family can enjoy themselves here.

03 Garden Restaurant Holt
Separate building on the 1F

1F
You can enjoy shopping for foods and goods, mainly in-house products

Holt private garden
Monument engraved with a waka (Japanese poem) expressing the longing for one's home.

03 Holt
Shuttle Bus stop (on the 1F)

05 Teppanyaki Kusunoki
Private rooms are available in Shiroyama Gardens Suiren and Teppanyaki Kusunoki.

06 Sushi Sakura
You can enjoy local cuisine and dishes featuring local ingredients.

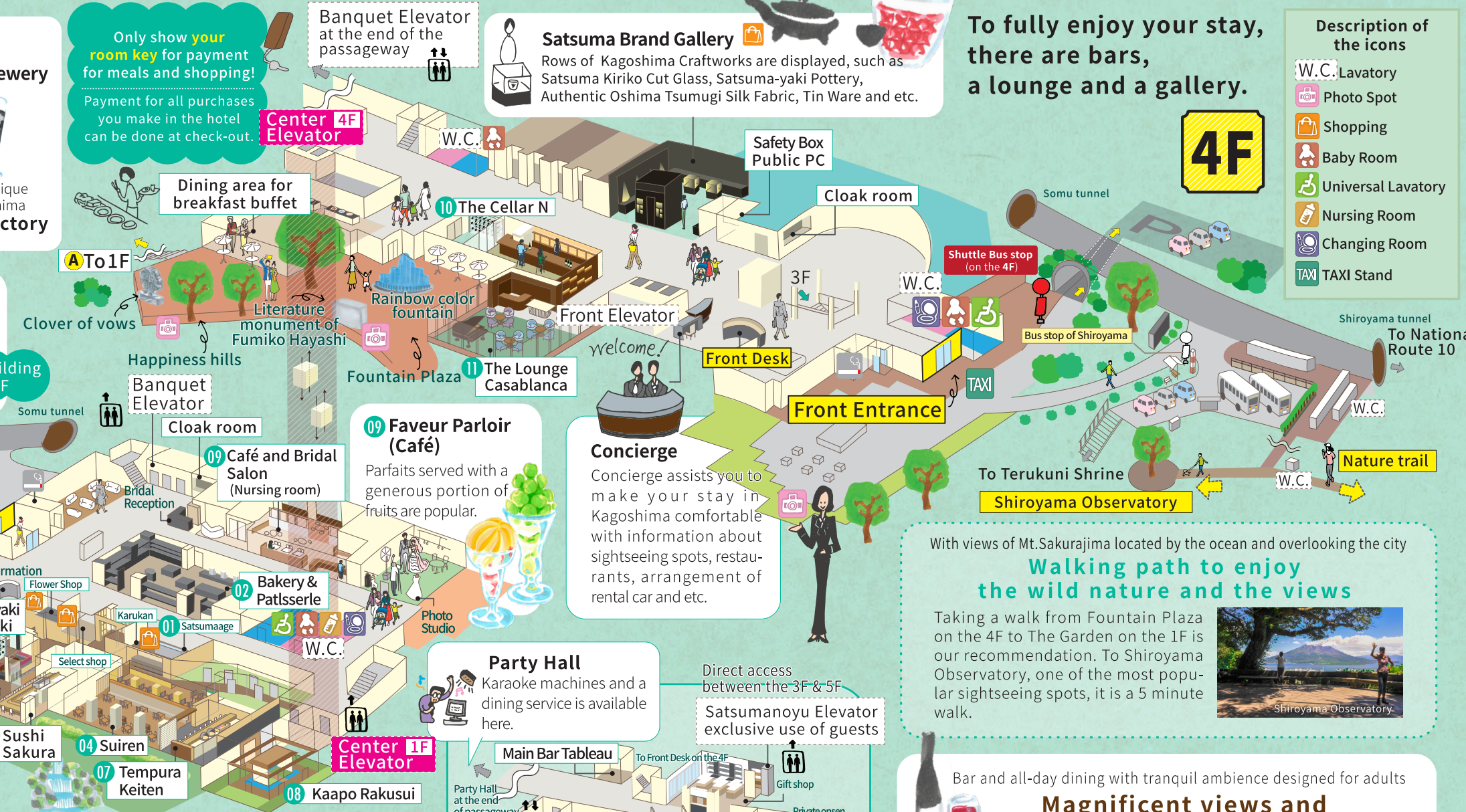
07 Tempura Keiten
Tempura featuring delicacies from Kagoshima's mountains and sea are served.

08 Kaapo Rakusui
Spend your relaxing time in a traditional Japanese-style private room.

09 Faveur Parloir (Café)
Parfaits served with a generous portion of fruits are popular.

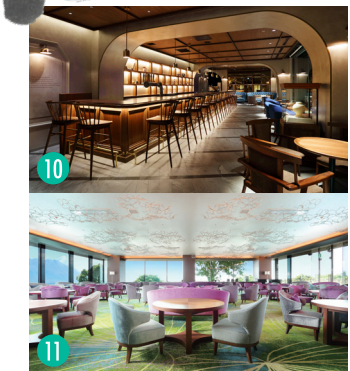
10 The Cellar N Baron Nagasawa
Wine bar, you can also enjoy course meals and a la carte dining.

11 The Lounge Casablanca
It is an open space surrounded by glass-sided walls on 3 sides. Mt.-Sakurajima can be viewed in front of you rough the window. It serves coffee, tea, lunch, afternoon tea, dinner and the bar serves drinks.



With views of Mt. Sakurajima located by the ocean and overlooking the city
Walking path to enjoy the wild nature and the views
Taking a walk from Fountain Plaza on the 4F to The Garden on the 1F is our recommendation. To Shiroyama Observatory, one of the most popular sightseeing spots, it is a 5 minute walk.

Bar and all-day dining with tranquil ambience designed for adults
Magnificent views and great for a relaxing time



10 The Cellar N Baron Nagasawa
Wine bar, you can also enjoy course meals and a la carte dining.

11 The Lounge Casablanca
It is an open space surrounded by glass-sided walls on 3 sides. Mt.-Sakurajima can be viewed in front of you rough the window. It serves coffee, tea, lunch, afternoon tea, dinner and the bar serves drinks.